

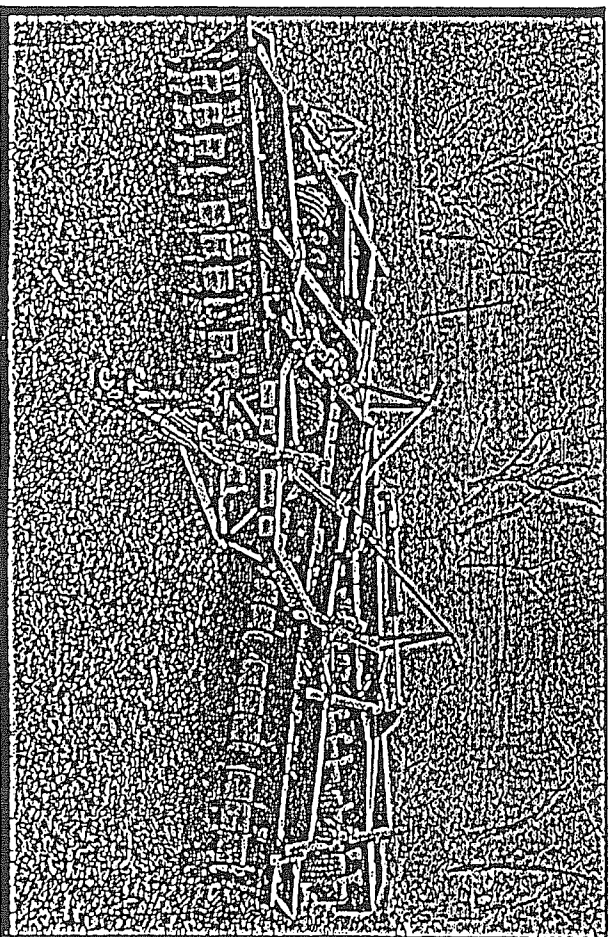
CRIZZLY

SPARE PARTS

MANUAL

"S" SERIES FOLDING WING

80 PLATE



"S" SERIES FW80 PLATE

CONTENTS

<u>NO.</u>	<u>PART NO.</u>	<u>DESCRIPTION</u>	<u>PAGE</u>
1		SPECIFICATIONS - GANG BOLTS - GANG AXLES - PULL TONGUES - TOOL KIT	1
2	GAG080	ASSEMBLY KIT	3
3	GCG080	FRAME ASSEMBLY	5
4	GCG080W	WING FRAME ASSEMBLY	7
5	GHGA0002	PULL ASSEMBLY	9
6	GPB00000	PULL TONGUE AND SIDE PLATES	11
7	S80FBE	FOLDING SYSTEM	13
8	SFW-8005	MAIN FRAME WHEEL ASSEMBLY	15
9	WMNAA740	H70 HUB & STUB ASSY M/FRAME 11.00 DUALS	17
10	SWTV	WING FRAME WHEEL ASSEMBLY	19
11	WMJAA800	H60 HUB & STUB ASSY WING FRAME 11.00 DUALS	21
12	GJGA0001	WHEEL LIFT ASSEMBLY LEFT	23
13		WHEEL LIFT SIDE PLATE ASSY	25
14	S80G1	GANG FRAME NO.1	27
15	S80G1	GANG FRAME NO.2	29
16	S80G4	GANG FRAME NO.4	31
17	S48G2	GANG & BEARING HOUSING DETAIL	33
18	GFFAA210	"S" SCRAPER ASSEMBLY LEFT	35
19	SFPULL	"S" LEVELING SYSTEM OPTIONS	37
20	GDFE0000	HYDRAULIC PITCH CONTROL/LEVELING ROD	39
21	S80FJ	FLANGE ASSEMBLY M/FRAME	41
22	HFGA6080	HYDRAULIC KIT	43
23	*	CHANGES	44

"S" SERIES FW80 PLATE

SPECIFICATIONS

WIDTH-9.1M (30') WEIGHT-7300KG (16093LBS) HORSE POWER-250+
 TYRE SIZE-11.00 X 16 NUMBER OF TYRES-8 TRANSPORT WIDTH-5M(16'4")

GANG AXLES USED

GANG BOLTS USED

PULL TONGUES AVAILABLE

NO. OF DISC	PART NO.		NO. OF DISC	PART NO. M20	PART NO.	HOLE SIZE MM	THICKNESS MM	TYPE
	2 HOLES	1 HOLES						
3	MJAMA707A	MJAMA688	3	FAAJA550	GPBAA000	28	50	FLOPPY
4	MJAMA944A	MJAMA925A	4	FAAJA790	GPBAB000	28	50	SWIVEL
5	MJAMB181A	MJAMB162A	5	FAAJB020	GPEBA000	40	70	FLOPPY
6	MJAMB418A	MJAMB399A	6	FAAJB260	GPEBB000	40	70	SWIVEL
7	MJAMB655A	MJAMB636A	7	FAAJB490	GPDCA000	50	100	FLOPPY
8	MJAMB892A	MJAMB873	8	FAAJB730	GPDCB000	50	100	SWIVEL

TOOL KIT (SUPPLIED WITH PLOUGH) - TEGF0000

<u>PART NO.</u>	<u>DESCRIPTION</u>	<u>QTY.</u>
CHAGH000	DISC LOCK SPANNER	1
CHCFG000	LEVELING SYSTEM SPANNER	1
CNAJG000	FOLDING GANG ADJUST BLOCK	2
TFCBPS00	24MM & 30MM TOOL ASSEMBLY	1

OPTION:

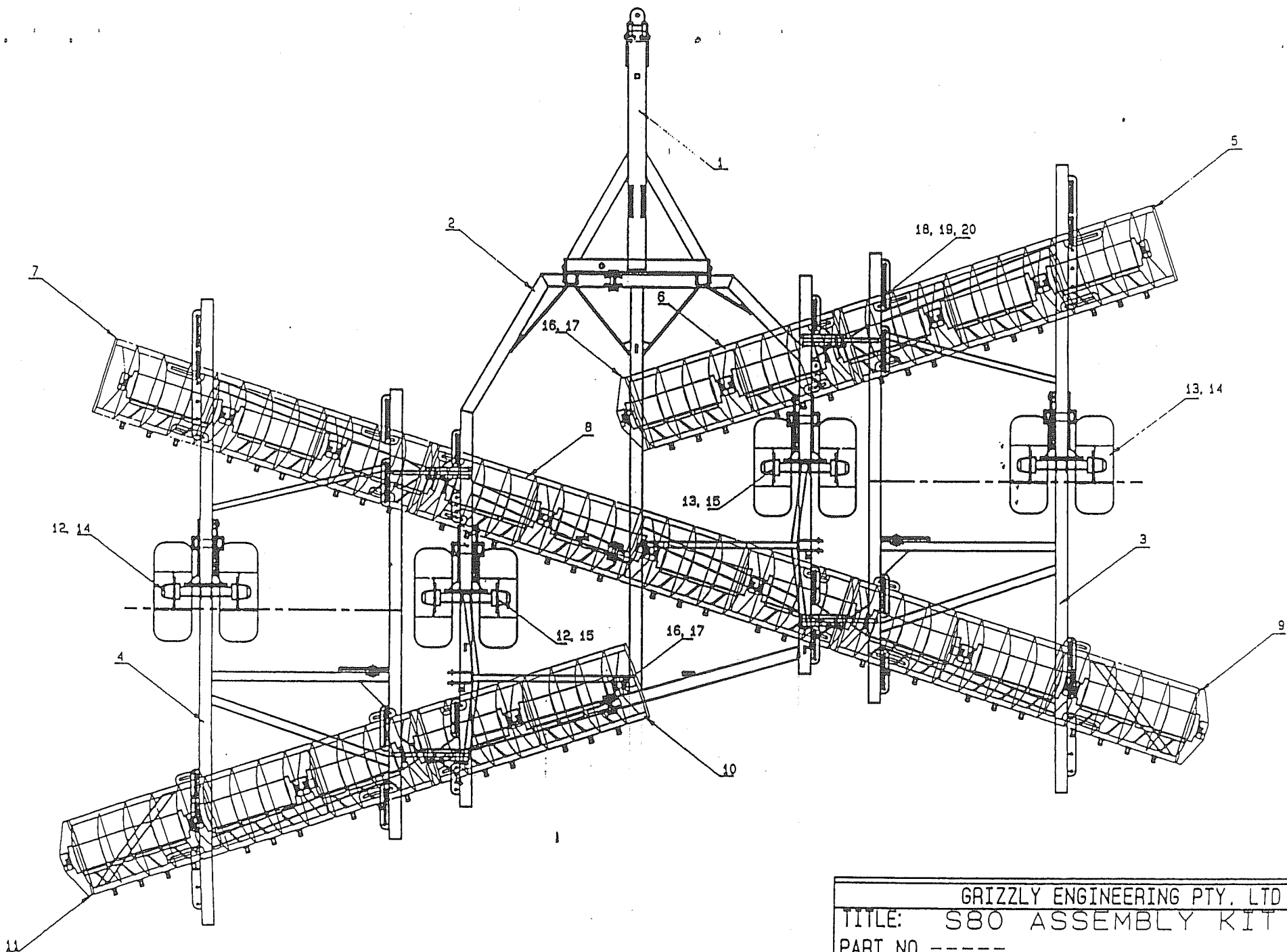
GDGAA000 - SWIVEL WHEELS (FOLDING WINGS)

"S" SERIES FW80 PLATE

ASSEMBLY KIT - GAG080

<u>NO.</u>	<u>PART NO.</u>	<u>DESCRIPTION</u>	<u>QTY.</u>
1	GHGA0002	PULL ASSEMBLY	1
2	GAG080	MAIN FRAME	1
3	CGC080WR	WING ASSEMBLY RIGHT	1
4	CGC080WL	WING ASSEMBLY LEFT	1
5	S80G1	GANG NO.1	1
6	S80G2	GANG NO.2	1
7	S80G3	GANG NO.3	1
8	S80G4	GANG NO.4	1
9	S80G5	GANG NO.5	1
10	S80G6	GANG NO.6	1
11	S80G7	GANG NO.7	1
12	GJGA0001	WHEEL LIFT ASSEMBLY LEFT	2
13	GJGA0002	WHEEL LIFT ASSEMBLY RIGHT	2
14	* WMJAA800	H60 HUB & STUB ASSY 11.00 DUALS	2
15	* WMNAA740	H70 HUB & STUB ASSY 11.00 DUALS	2
16	FABKA075	BOLT M24	3
17	FFBKA000	NUT NYLOC M24	3
18	FABJA075	MBOLT M20	24
19	FFAJA000	NUT BLACK M20	24
20	FMDJJN00	SQ/WASHER	48

NOTE: * CHANGE HAS BEEN MADE. REFER TO MASTER FILE.



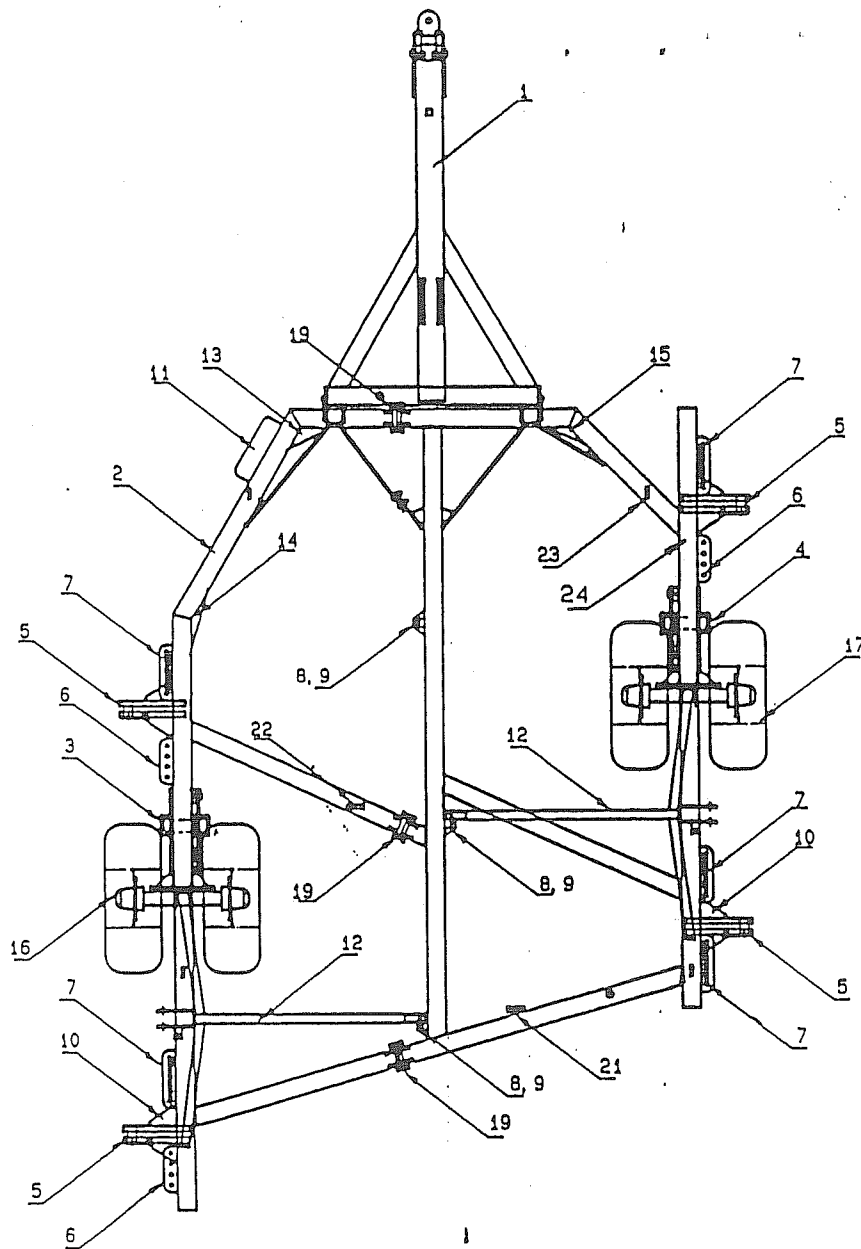
3		
GRIZZLY ENGINEERING PTY. LTD		
TITLE: S80 ASSEMBLY KIT		
PART NO. -----		
SCALE: 1: 32	DATE: 6-9-89	DRG NO: GAG080

"S" SERIES FW80 PLATE

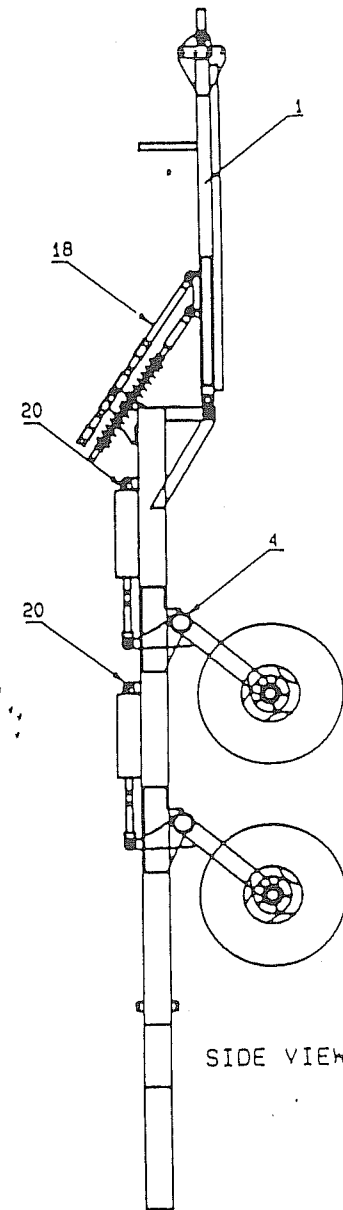
MAIN FRAME ASSEMBLY - GCG080

<u>NO.</u>	<u>PART NO.</u>	<u>DESCRIPTION</u>	<u>QTY.</u>
1	GHGA0002	PULL ASSEMBLY	1
2	GCG080	MAIN FRAME	1
3	GJGA0001	WHEEL LIFT ASSEMBLY LEFT	1
4	GHGA0002	WHEEL LIFT ASSEMBLY RIGHT	1
5	CGBGP003	HINGE PLATE	8
6	LBDJA182	SERIES OF HOLES 182MM	3
7	LADJA250	SLOT 250MM	5
8	MAHJA070A	PIVOT LUG	3
9	CJAZE002	PIVOT LUG GUSSET	6
10	CABGG003	HINGE PLATE GUSSET	8
11	GNBHF000	TOOL BOX ASSEMBLY	1
12	GNBKG002	WING LOCK UP ASSEMBLY	2
13	CABGH004	MAIN FRAME GUSSET 16MM	2
14	CABGH006	MAIN FRAME GUSSET 16MM	2
15	CABGH000	MAIN FRAME GUSSET	2
16	* WMNAA740	H70 HUB & STUB ASSY 11.00 DUALS	2
17	* WSMEEC00	H70 RIM & TYRE ASSY 11.00X16 12PLY	4
18	GDFE0000	LEVELING SYSTEM	1
19	CGBGU000	FRAME FLANGE ASSEMBLY	3
20	CBBHM001	RAM LUG	2
21	CBBGM003	RAM LUG	1
22	CBBGM003	RAM LUG	1
23	CBBZJ000	LIFT LUG	4
24	GNBEF000	DEPTH GAUGE S24-100	1

NOTE: * CHANGE HAS BEEN MADE. REFER TO MASTER FILE



TOP VIEW



SIDE VIEW

5

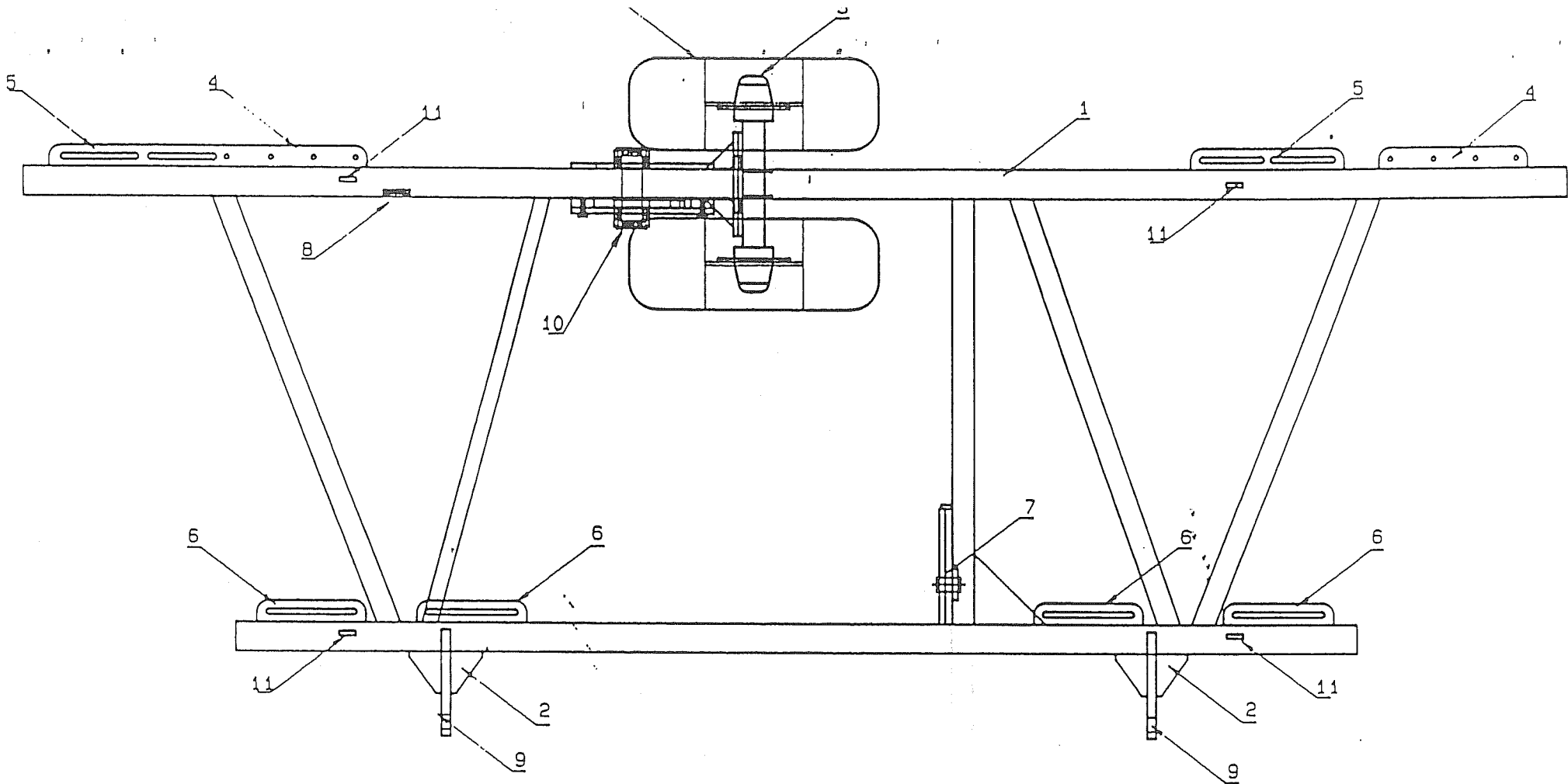
GRIZZLY ENGINEERING PTY. LTD			
TITLE: MAIN FRAME (S-80)			
PART NO. GCG080			
SCALE: 1: 31.5	DATE: 4-9-89	DRG NO: GCG080	

"S" SERIES FW80 PLATE

WING ASSEMBLY RIGHT - GCG080WR

<u>NO.</u>	<u>PART NO.</u>	<u>DESCRIPTION</u>	<u>QTY.</u>
1	S80WINGR	WING FRAME	1
2	CABGG003	HINGE GUSSET	4
3	* WMJAA800	H60 HUB & STUB ASSEMBLY	1
4	LBDJA450	SERIES OF HOLES 450MM	2
5	LADJA500	SLOT 500	2
6	LADJA300	SLOT 300	4
7	CBBGM000	WING LIFT ARM	2
8	CBBHM001	RAM LUG	1
9	CGBGP003	HINGE PLATE	2
10	GJGA0002	WHEEL LIFT ASSEMBLY RIGHT	1
11	CBBZJ000	LIFTING LUG	4
12	* WSJEEB00	H60 RIM & TYRE ASSY 11.00X16 8PLY	4

NOTE: * CHANGE HAS BEEN MADE. REFER MASTER FILE.



7

OTE:

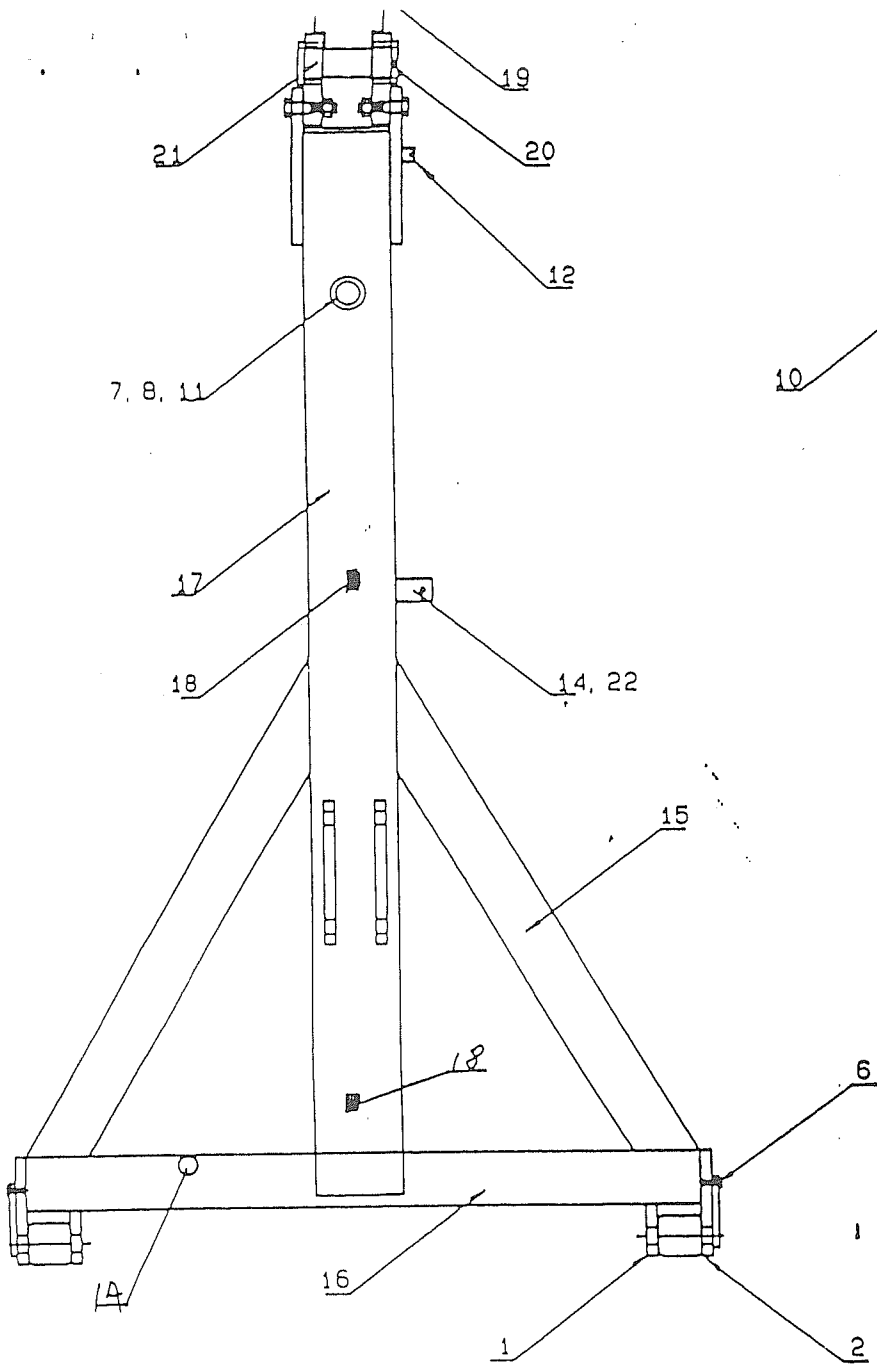
LEFT WING IS A MIRROR IMAGE OF RIGHT WING

TOP VIEW

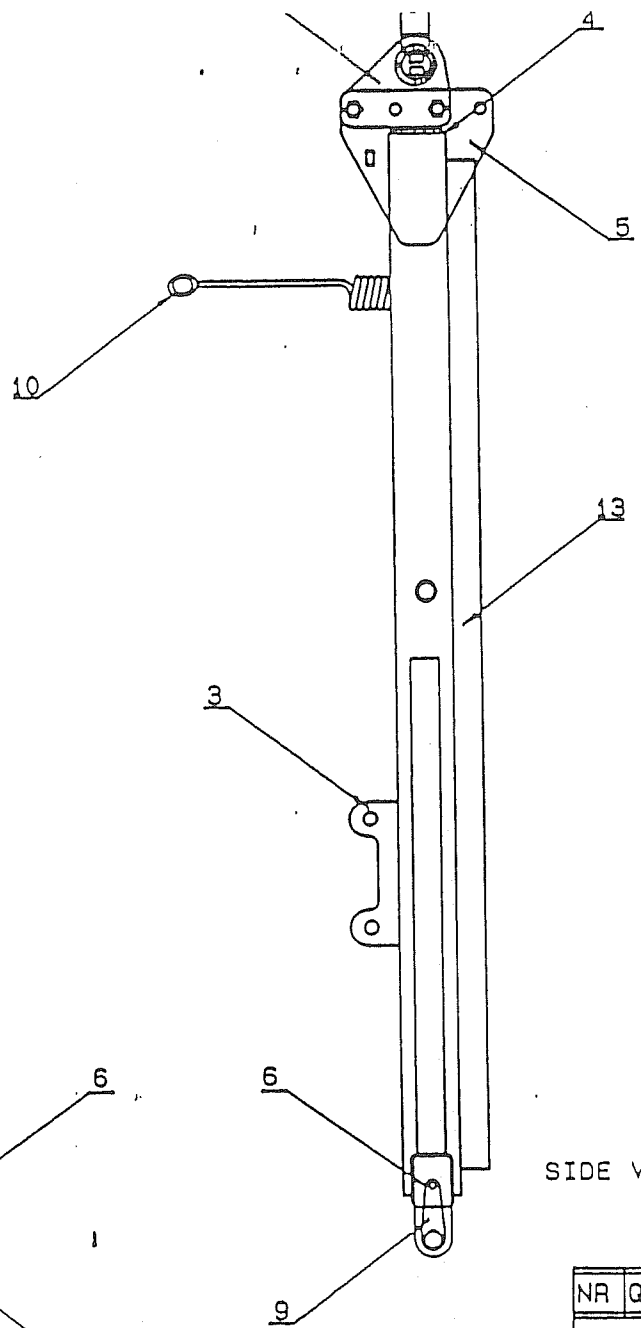
NR	QTY	PART, MATERIAL	DIMENSIONS	PART NO.
GRIZZLY ENGINEERING PTY				
TITLE: WING RIGHT (S-80)				
PART NO GCG080W				
SCALE	1: 15	DATE: 15.12.88	DRG NO. SBOWING	

"S" SERIES FW80 PLATE
PULL ASSEMBLY GHGA0002

<u>NO.</u>	<u>PART NO.</u>	<u>DESCRIPTION</u>	<u>QTY.</u>
1	CBCFJ000	PULL BACK LUG INNER	2
2	CBCFJ001	PULL LUG OUTER	2
3	CBCFJ002	LEVEL LUG PULL	2
4	CFBFE000	END PLATE	1
5	CFCFJ000	PULL SIDE PLATE	2
6	FABGA025	BOLT M12	2
7	FABJA045	BOLT M20	1
8	FFBJA000	NUT NYLOC M20	1
9	FGBPA135	PULL PIN	2
10	FKNA440	SPRING HOSE HOLDER	1
11	FMAJE000	F/WASHER 20 ID X 40 OD	2
12	MAEEA025A	FLAT 25 X 10	1
13	MAEHB950	FLAT 50 X 10	2
14	MECFA065A	PIPE	2
15	MHHGB864	RHS	2
16	MHHHB200	RHS	1
17	MHKPB950	PULL BEAM (RHS)	1
18	HJBHA000	BASE PLATE FOR 3/4 HYD. HOSE	2
19	CBCFU001	PULL TONGUE 50MM FLOPPY	1
20	GNDMF001	S PULL SIDE PLATE RIGHT	1
21	GNDMF000	S PULL SIDE PLATE LEFT	1
22	GKFE0000	"S" PARKING JACK	1



TOP VIEW



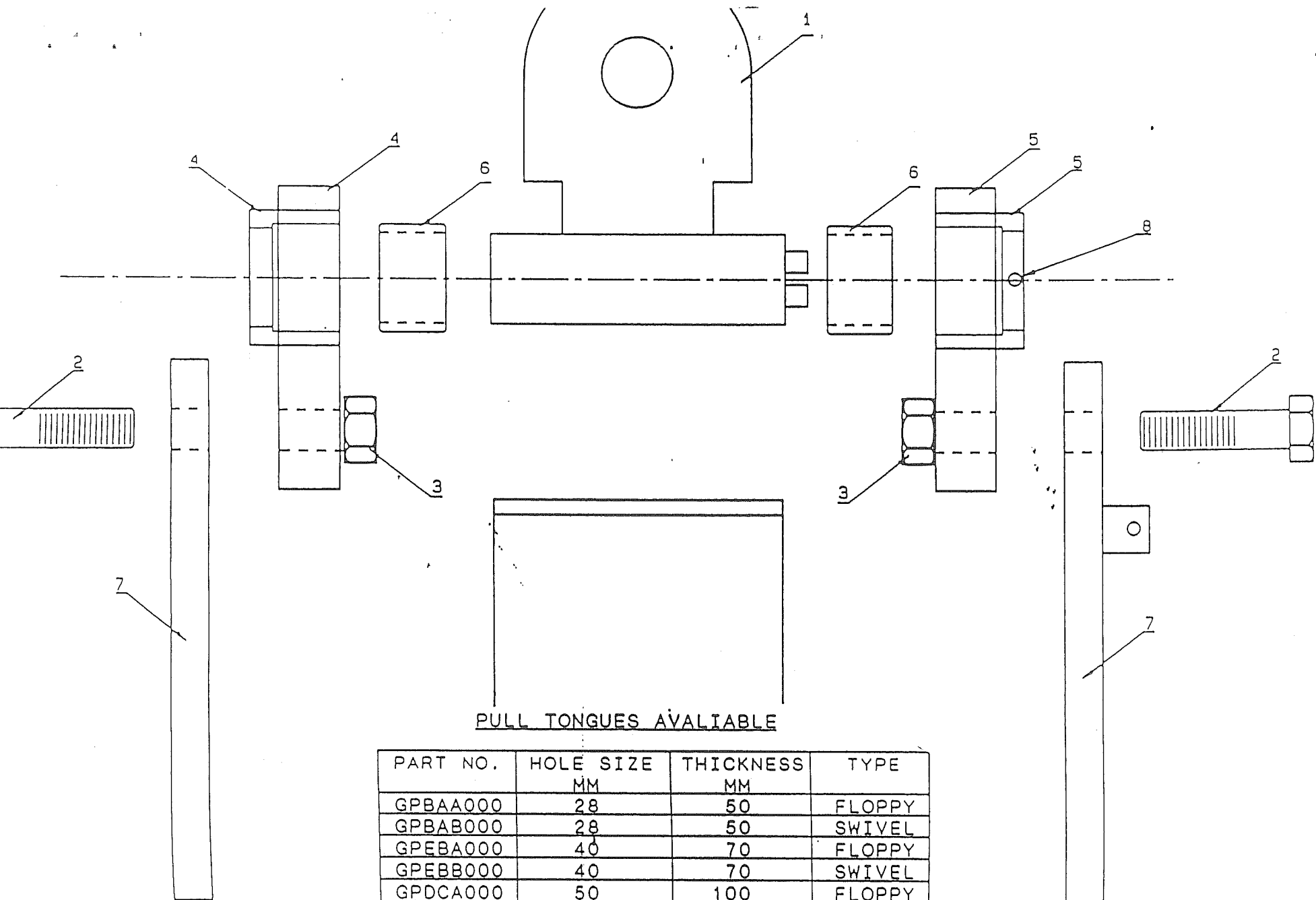
SIDE VIEW

NR	QTY	PART, MATERIAL	DIMENSIONS	PART NO.
GRIZZLY ENGINEERING PTY				
TITLE: "S" 48-80 PULL				
PART NO GHGA0002				
SCALE 1: 10			DATE: 23.8.89	DRG NO. GHGA0002

"S" SERIES FW80 PLATE

PULL TONGUE AND SIDE PLATES - GPB00000

<u>NO.</u>	<u>PART NO.</u>	<u>DESCRIPTION</u>	<u>QTY.</u>
1	GPEBA000	FLOPPY PULL TONGUE 40 X 70MM	1
2	FABJA080	M20 BOLT	4
3	FFBJA000	M20 NYLOC NUT	4
4	GNDMF000	"S" PULL SIDE PLATE ASSY LEFT	1
5	GNDMF001	"S" PULL SIDE PLATE ASSY RIGHT	1
6	BJEGA035	VESCONITE BUSH	2
7	CGCFJ000	PULL SIDE PLATE	2
8	FKBCA000	R CLIP (HAIR PIN)	1



PULL TONGUES AVAILABLE

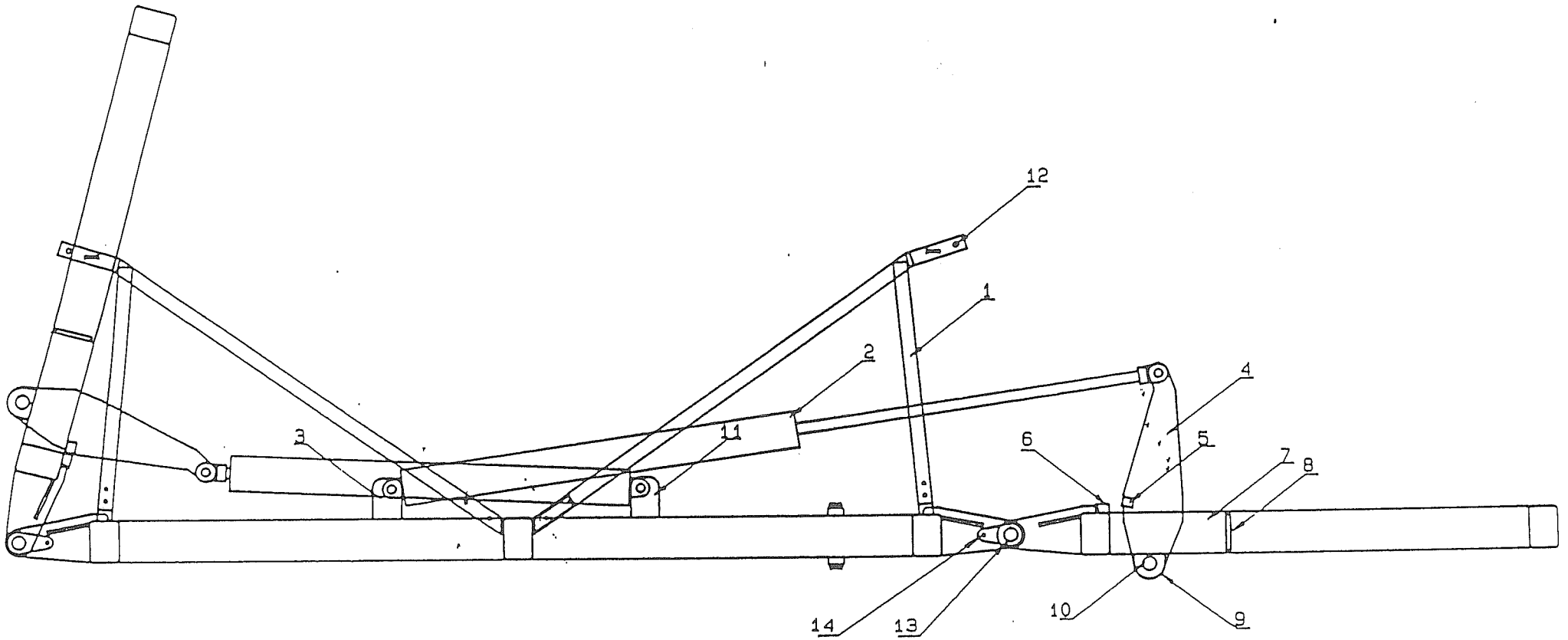
PART NO.	HOLE SIZE	THICKNESS	TYPE
	MM	MM	
GPBAA000	28	50	FLOPPY
GPBAB000	28	50	SWIVEL
GPEBA000	40	70	FLOPPY
GPEBB000	40	70	SWIVEL
GPDCA000	50	100	FLOPPY
GPDCB000	50	100	SWIVEL

NR	QTY	PART, MATERIAL	DIMENSIONS	PART NO.
GRIZZLY ENGINEERING PTY				
		TITLE: PULL TONGUE & SIDE PLATES		
		PART NO: VARIOUS		

"S" SERIES FW80 PLATE
FOLDING SYSTEM - S100FBE

<u>NO.</u>	<u>PART NO.</u>	<u>DESCRIPTION</u>	<u>QTY.</u>
1	GNBKG002	WING SUPPORT	2
2	HYP400/48	HYD CYLINDER 4.00" X 48"	2
3	CBBGM003	RAM LUG	1
4	CBBGM000	WING LEFT ARM	2
5	CGBGP001	BLOCK 60 X 40	2
6	CGBGP000	BLOCK 100 X 60	2
7	CGBGJ000	SIDE PLATE	2
8	MAGGA130	FLAT	2
9	CBBZJ000	SIDE LUG	4
10	MDDEA080	SHAFT	2
11	CBBGM003	RAM LUG	1
12	FGAFA175	WING SUPPORT PIN	2
13	* FGBUA125	WING HINGE PIN	4
14	FABGA025	BOLT	4

NOTE: * CHANGE HAS BEEN MADE. REFER PAGE 44.



BACK ELEVATION

13

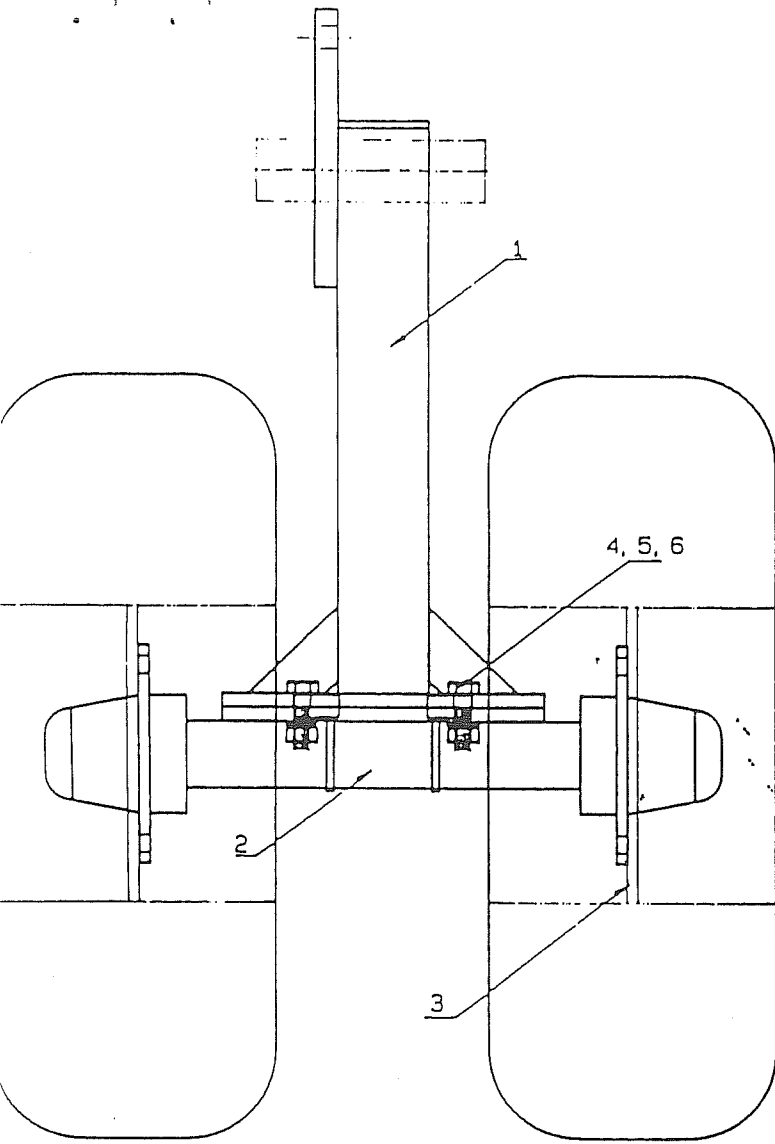
NR	QTY	PART, MATERIAL	DIMENSIONS	PART NO.
GRIZZLY ENGINEERING PTY				
TITLE: WING FOLDING MECH.				
PART NO				
SCALE 1: 15		DATE: 15.12.88		DRG NO. S80FBE

"S" SERIES FW 80 PLATE

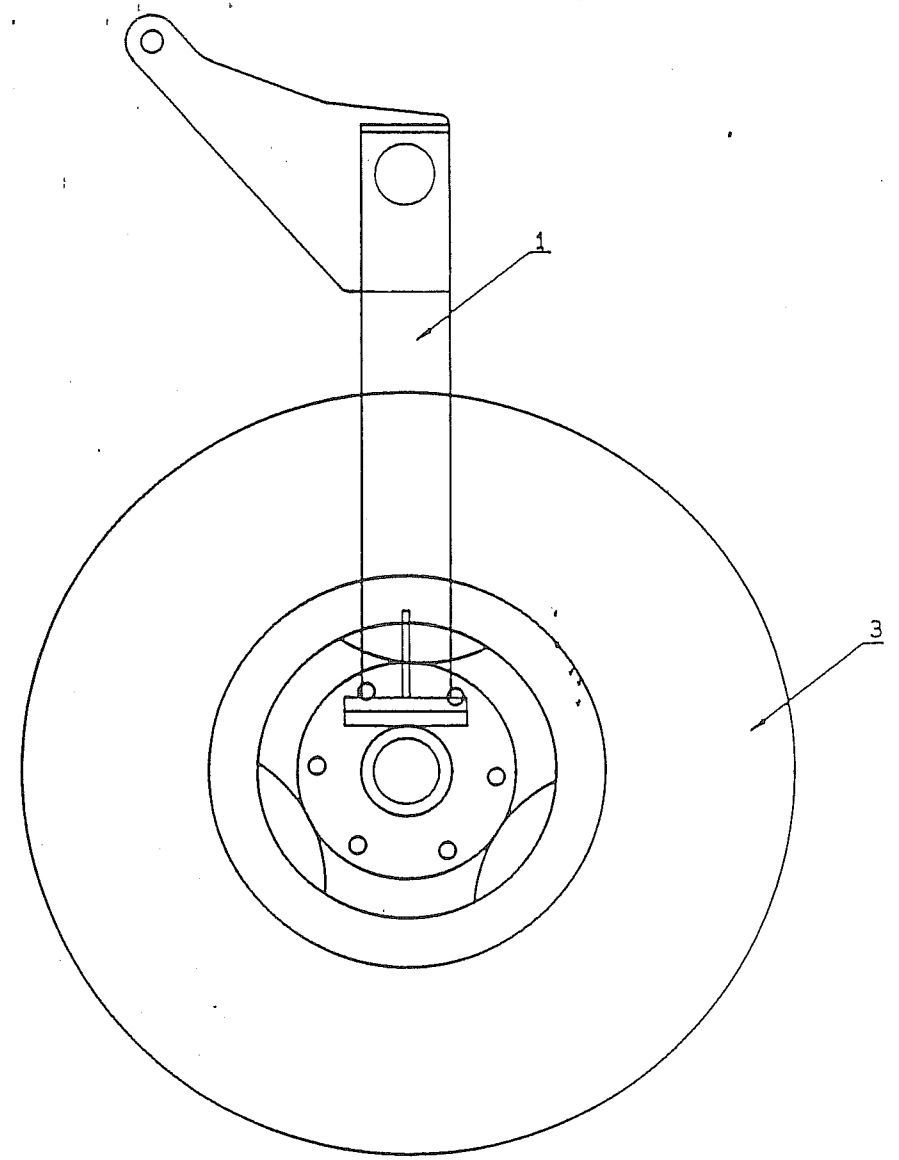
WHEEL ASSEMBLY MAIN FRAME

<u>NO.</u>	<u>PART NO.</u>	<u>DESCRIPTION</u>	<u>QTY.</u>
1	GJGA0001	WHEEL LIFT ASSEMBLY	1
2	* WMNAA740	H70 HUB & STUB ASSEMBLY	1
3	* WSMEEC00	H70 RIM & TYRE ASSY 11.00 X 16	2
4	FABJA065	BOLT M20	4
5	FFBJA000	NUT NYLOC M20	4
6	FMCJG000	WASHER 20 ID X 40 OD	4

NOTE: * CHANGE HAS BEEN MADE. REFER TO MASTER FILE.



BACK ELEVATION



SIDE VIEW

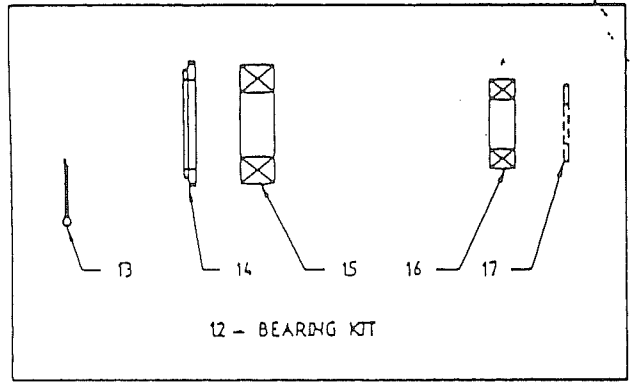
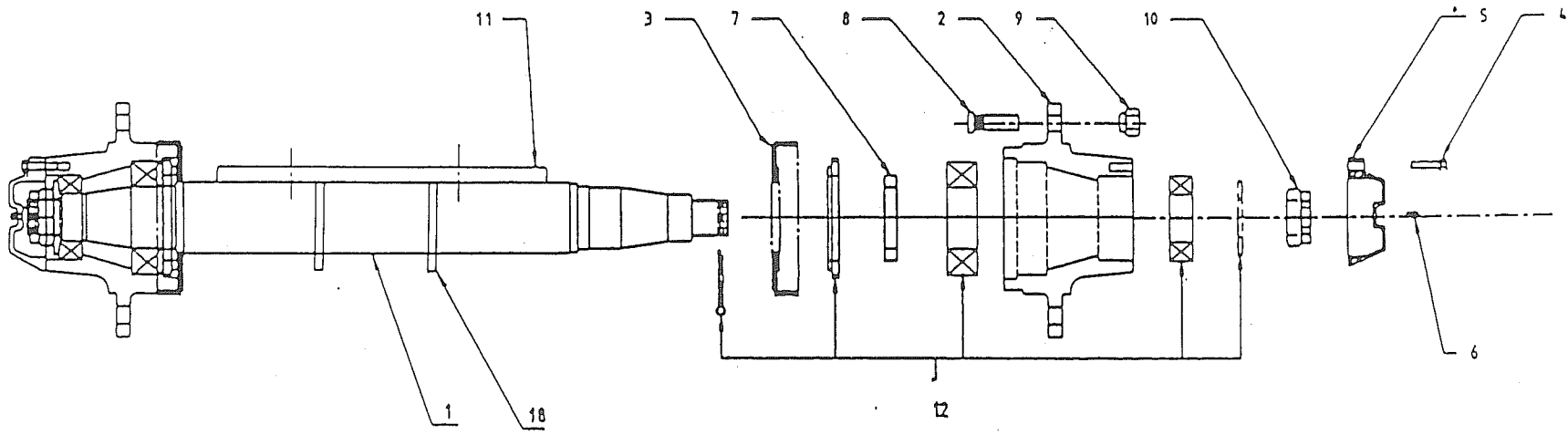
WHEEL ASSY.

"S" SERIES FW80 PLATE

H70 HUB & STUB ASSEMBLY (NEW) - WMNAA000

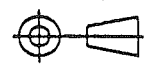
<u>NO.</u>	<u>PART NO.</u>	<u>DESCRIPTION</u>	<u>QTY.</u>
1	WAMBA740	H70 STUB AXLE	1
2	*WJMAA000	H70 HUB	2
3	BNMAA001	DUST COVER ASSEMBLY	2
4	FEBEA030	CAP SCREW M8	6
5	WKMAA001	H70 CAP	2
6	BMAAA000	GREASE NIPPLE	2
7	BSNNA013	BUSH HUB	2
8	FDBJA000	H70 WHEEL STUD	12
9	FFFJA000	H70 WHEEL NUT	12
10	FFCTA000	H70 AXLE NUT	2
11	CGEFH000	AXLE BASE PLATE	1
12	BAMAA001	H70 BEARING KIT	2
13	FKCEA063	SPLIT PIN	2
14	BNMBA001	H70 BEARING SEAL	2
15	BBMAA000	H70 BEARING LARGE	2
16	BCMAA000	H70 BEARING SMALL	2
17	FMAUJT00	FLAT WASHER	2
18	CAEGE000	GUSSET	2

NOTE: * CHANGE HAS BEEN MADE. REFER TO MASTER FILE



17

ALL DIMENSIONS IN MILLIMETERS
 TOLERANCES
 LINEAR ± 0.5
 ANGULAR $\pm 0.5^\circ$
 AS1100



DATE	27/01/90
DRAWN	J STEIN
CHECKED	GAVAN
APPROVED	

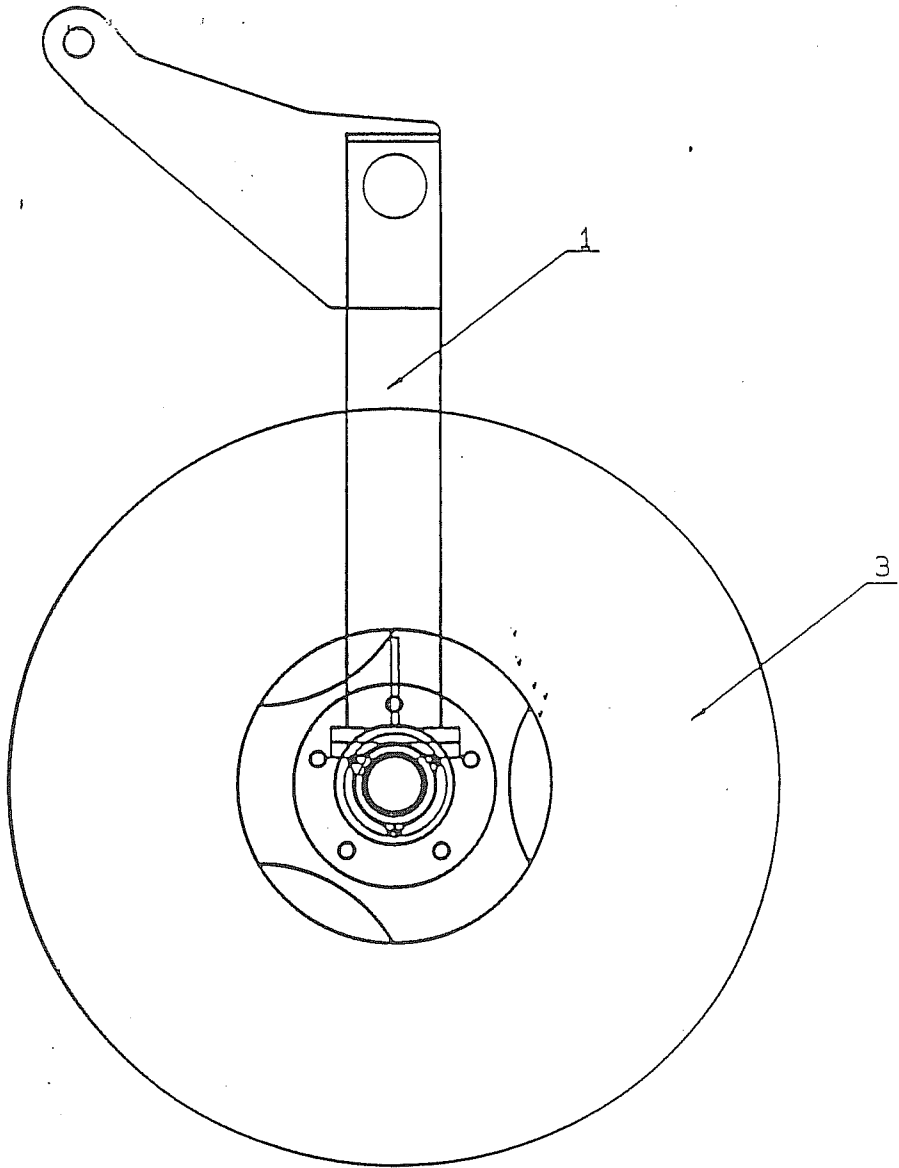
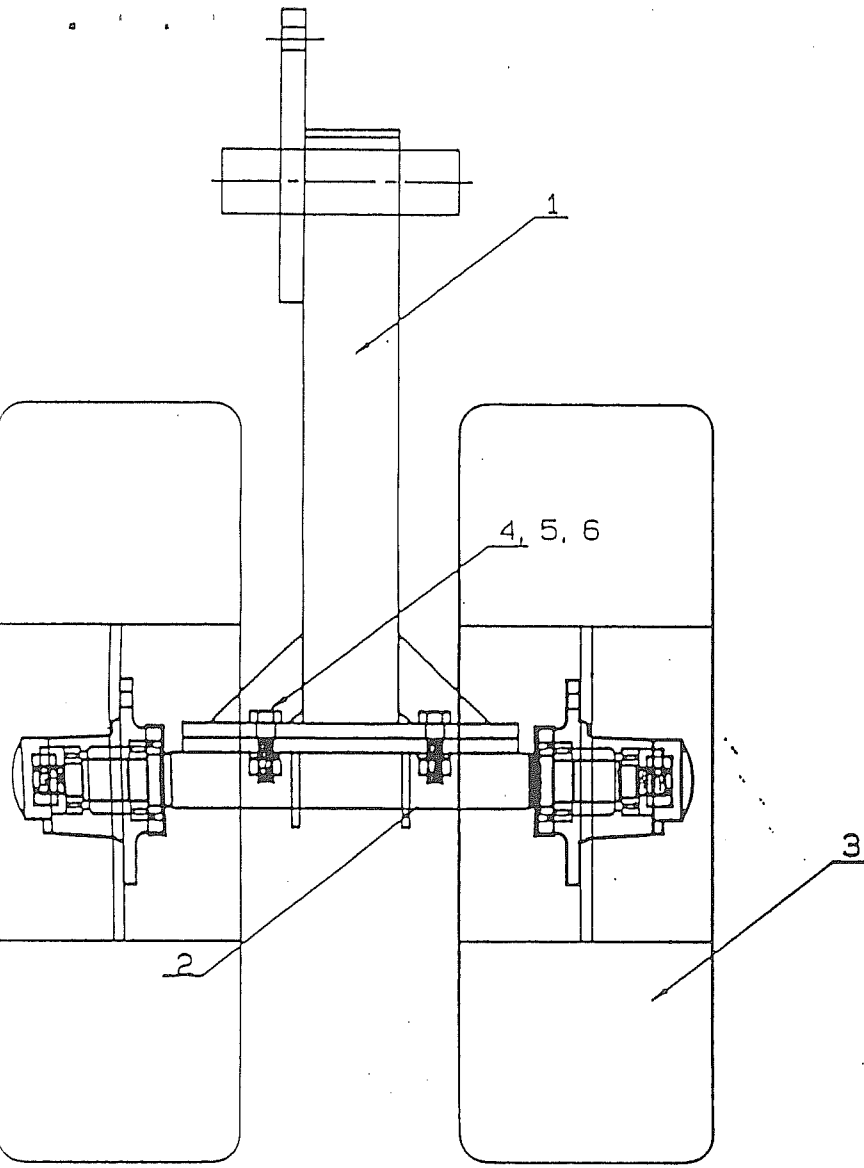
GRIZZLY ENGINEERING	
TITLE H 70 HUB & STUB	
SCALE DO NOT SCALE	DRAWING N° WMNAA000
	A3

"S" SERIES FW80 PLATE

WHEEL ASSEMBLY H60 WING FRAME

<u>NO.</u>	<u>PART NO.</u>	<u>DESCRIPTION</u>	<u>QTY</u>
1	GJGA0001	WHEEL LIFT ASSEMBLY LEFT	1
2	* WMJAA800	HUB & STUB ASSY H60 11.00 DUALS	1
3	* WSJEEB00	H60 RIM & TYRE ASSY 11.00X16 8PLY	2
4	FABJA065	BOLT M20	4
5	FFBJA000	NYLOC NUT M20	4
6	FMCJG000	WASHER 20ID X 400D	4

NOTE: * CHANGE HAS BEEN MADE. REFER TO MASTER FILE



19

NR	QTY	PART, MATERIAL	DIMENSIONS	PART NO.
GRIZZLY ENGINEERING PTY				
TITLE:		WHEEL ASSY	S-SERIES	11.00 DUELS
PART NO				
SCALE	1: 6	DATE: 19.09.88	DRG NO.	SHTV

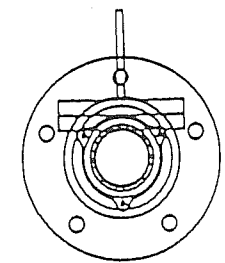
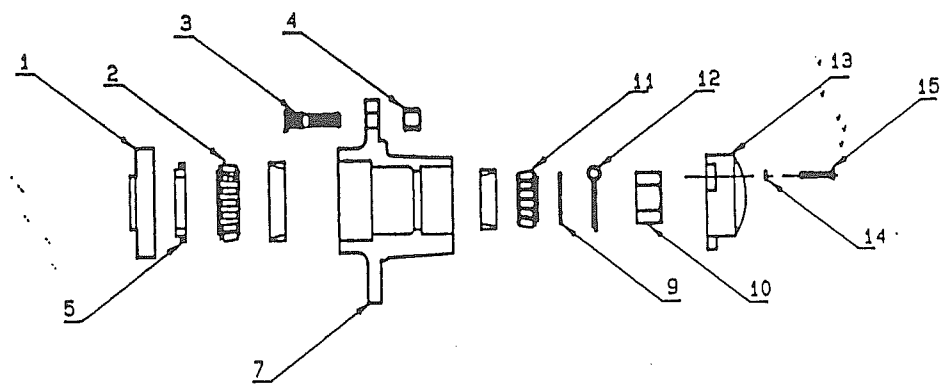
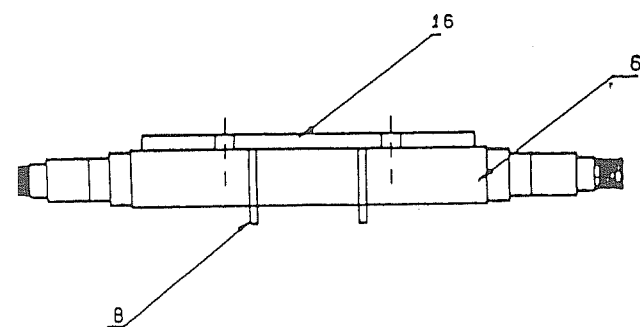
"S" SERIES FW80 PLATE

HUB & STUB ASSEMBLY - WMJAA800

<u>NO.</u>	<u>PART NO.</u>	<u>DESCRIPTION</u>	<u>QTY.</u>
1	BNJAA000	DUST COVER	1
2	BBGAA000	BEARING FOR H60 HUB LARGE	1
3	FDBHA000	STUD WHEEL 5/8 X 1 7/8	5
4	FFFHA000	NUT WHEEL 5/8	5
5	BNJBA000	SEAL FOR H60 HUB	1
6	WAJBA800	H60 STUB AXLE BARE 11.00X16 DUALS	1
7	WJJAA000	HUB H60 BRG KIT FITTED	1
8	CAEGE001	GUSSET H60 AXLE	2
9	FMASAK00	FLAT WASHER	1
10	FFCPA000	NUT SLOTTED	1
11	BCJAA000	BEARING FOR H60 HUB SMALL	1
12	FKCEA063	SPLIT PIN	1
13	WKJAA000	CAP FOR H60 HUB	1
14	FMBDCB00	WASHER SPRING 6MM	3
15	FABDA016	BOLT M6	3
16	CGEFH000	AXLE BASE PLATE 16MM	1

NOTE:

WBJBA800 H60 STUB AXLE ASSY CONSISTS OF ITEMS 6, 8 & 16.
BAJAA000 H60 BEARING KIT CONSISTS OF ITEMS 2, 5, 11 & 12.
* CHANGE HAS BEEN MADE. REFER TO MASTER FILE.



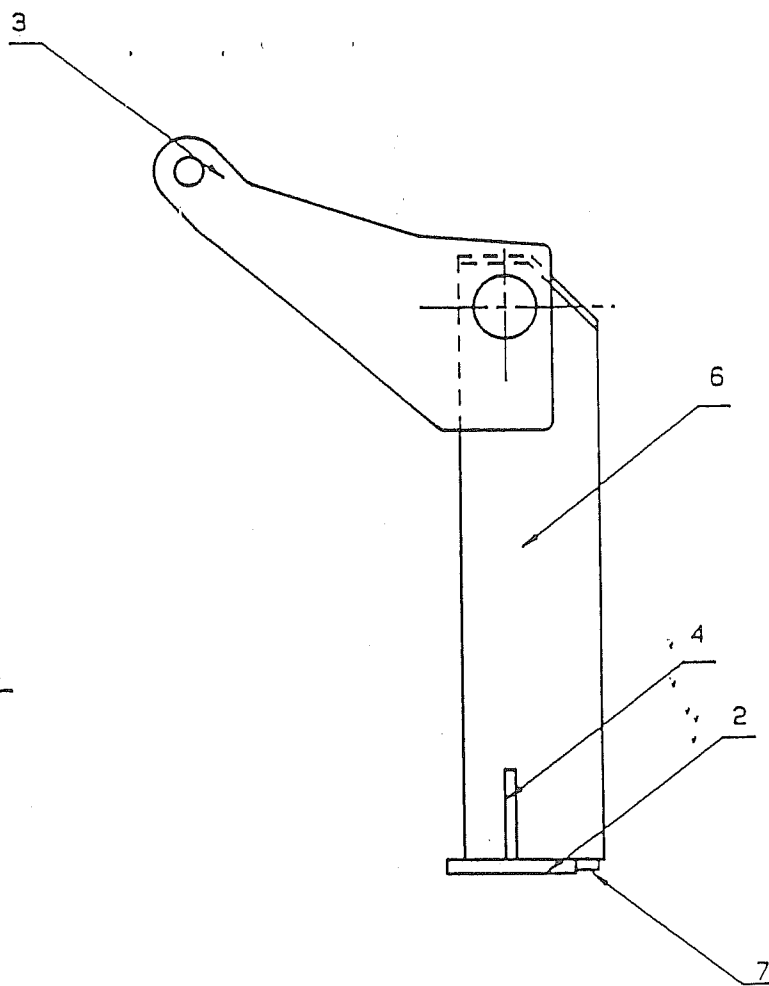
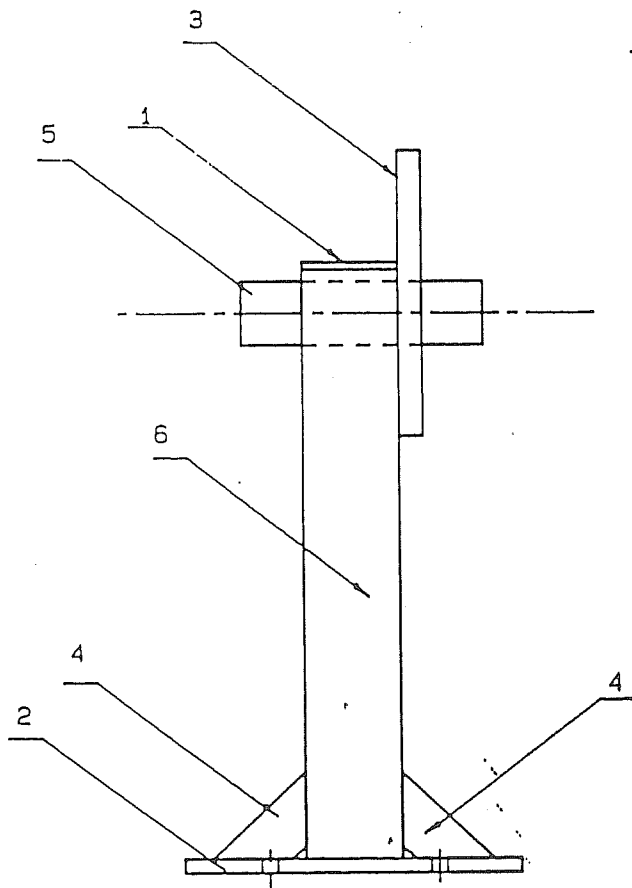
21

NR	QTY	PART, MATERIAL	DIMENSIONS	PART NO.
GRIZZLY ENGINEERING PTY				
TITLE: HUB & STUB ASSY. 11.00 DUELS				
PART NO WMJAAB00.				
SCALE 1: 6		DATE: 24.8.89		DRG NO WMJAAB00

"S" SERIES FW80 PLATE
WHEEL LIFT ASSEMBLY LEFT - GJGA0001

<u>NO.</u>	<u>PART NO.</u>	<u>DESCRIPTION</u>
1	CFEGE001	END CAP 8MM
2	CGEFH000	AXLE BASE PLATE 16MM
3	CGEFM001	WHEEL ASSEMBLY LIFTING ARM
4	CJAZG000	GUSSET
5	MDDJA255	ROUND
6	MHKPA643A	WHEEL ASSEMBLY LEG
7	MAFEA085	FLAT 12MM X 25MM

NOTE: - GJFA0001 WHEEL LIFT ASSEMBLY LEFT IS A MIRROR IMAGE OF
GJFA0002 WHEEL LIFT ASSEMBLY RIGHT.
GJGA0003 WHEEL LIFT ASSEMBLY RIGHT WING ONLY(WITH HELPER RAM)



23

NR	QTY	PART, MATERIAL	DIMENSIONS	PART NO.
GRIZZLY ENGINEERING PTY				
TITLE: WHEEL LIFT ASSY. LEFT. 152x102.				
PART NO gjga0001				
SCALE 1: 6		DATE: 23.8.89		DRG NO.GJGA0001

"S" SERIES

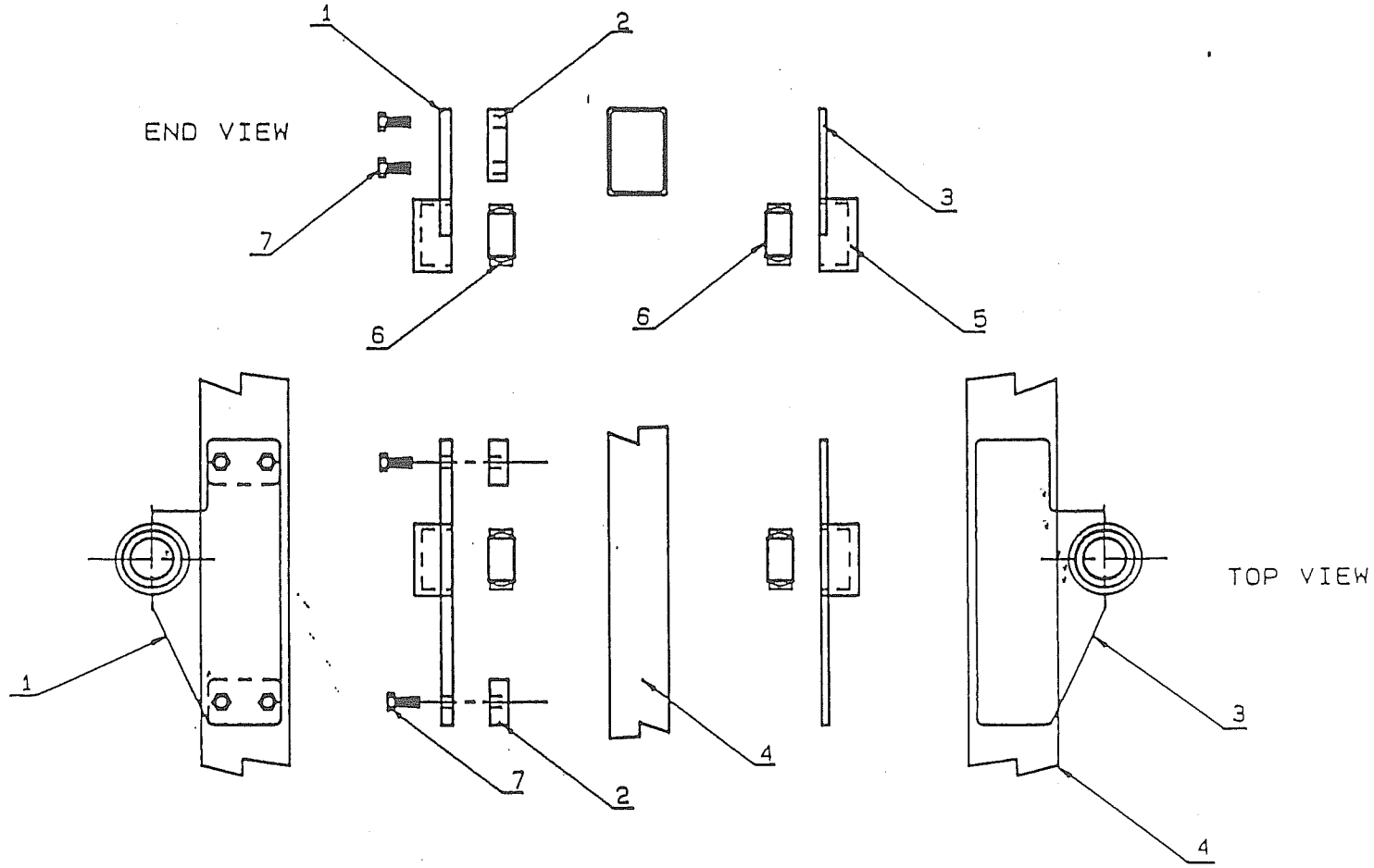
WHEEL LIFT SIDE PLATE ASSEMBLY

<u>NO.</u>	<u>PART NO.</u>	<u>DESCRIPTION</u>	<u>QTY.</u>
1	GJHB0000R	W/A SIDE PLATE ASSY INNER (RIGHT)	1
2	CCEFP000	W/A SPACER BLOCKS	2
3	GJFB0003R	W/A SIDE PLATE ASSY OUTER (RIGHT)	1
4	MHHND600	MAIN FRAME BEEM	1
5	MFWYA065A	BALL BUSH HOUSING	2
6	BDMZA000	BALL BUSHING	2
7	FABJA045	BOLT M20	4

NOTE: GJHB0000L - W/A SIDE PLATE ASSY INNER LEFT.

GJFB0003L - W/A SIDE PLATE ASSY OUTER LEFT.

LEFT AND RIGHT SPECIFY WHICH SIDE OF THE MACHINE THE
WHEEL ASSEMBLY IS LOCATED.



25

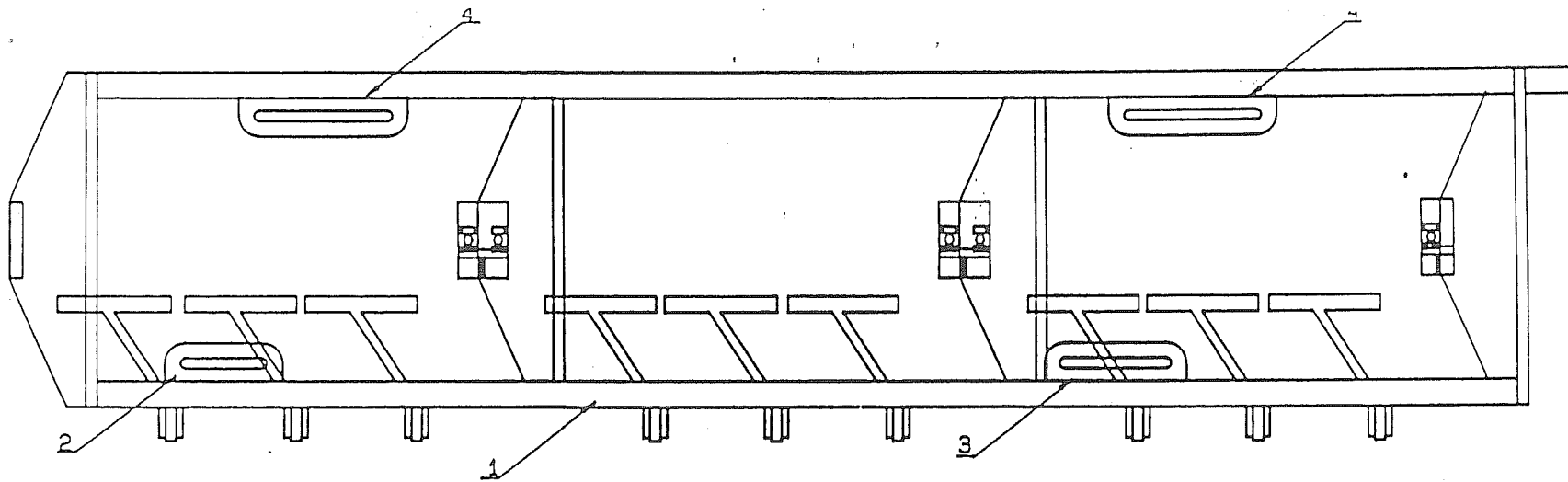
			ALL DIMENSIONS IN MILLIMETERS. TOLERANCES				GRIZZLY ENGINEERING.					
			LINEAR ± 0.8								DRAWN	G. BAILEY
			ANGULAR ± 0.8		CHECKED	-----	SCALE NO SCALE DRAWING NO. SIDEASSY A3					
ISSUE	DATE	ZONE	CHANGE	BY	CKD	APPROVED					-----	DATE
AMENDMENTS.			AS1100		DATE		27-6-90					

"S" SERIES FW80 PLATE

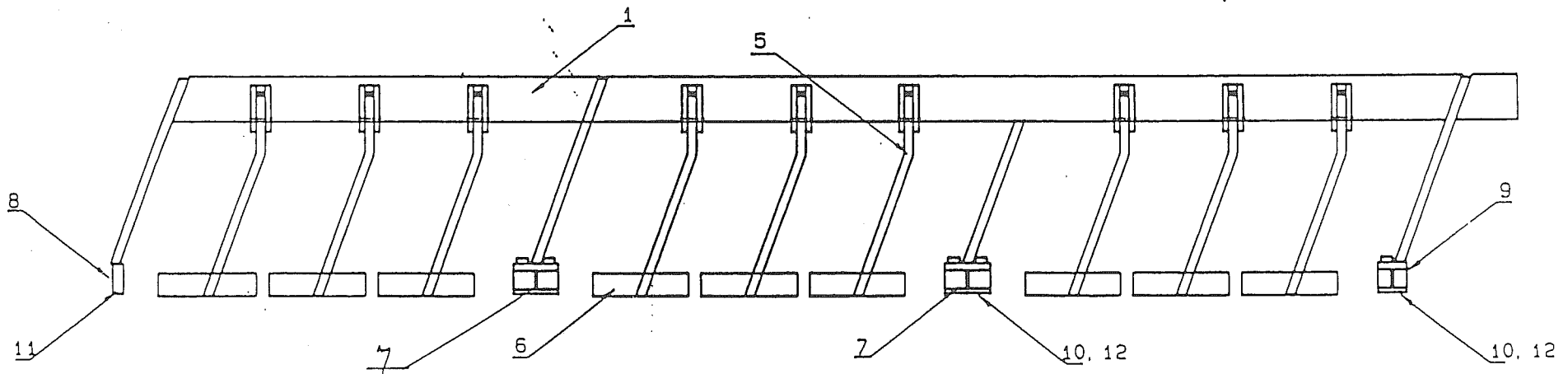
GANG NO.1 - S80G1

<u>NO.</u>	<u>PART NO.</u>	<u>DESCRIPTION</u>
1	S80G1	GANG FRAME
2	LADJA150	SLOT 150MM
3	LADJA200	SLOT 200MM
4	LADJA250	SLOT 250MM
5	* GFFAA210	SCRAPER ASSEMBLY LEFT
6	MCCHA210	SCRAPER PAD
7	GEGBA000	DOUBLE AXLE CARRIER
8	CBAFM000	AXLE KEEPER (KISSING)
9	GEGEA000	SINGLE AXLE CARRIER RIGHT
10	FABHAA085	BOLT M16
11	FABGA065A	BOLT M12 WITH HOLE
12	FFBHA000	NUT NYLOC M16

NOTE * CHANGE HAS BEEN MADE. REFER PAGE 44.



TOP VIEW



BACK ELEVATION

27

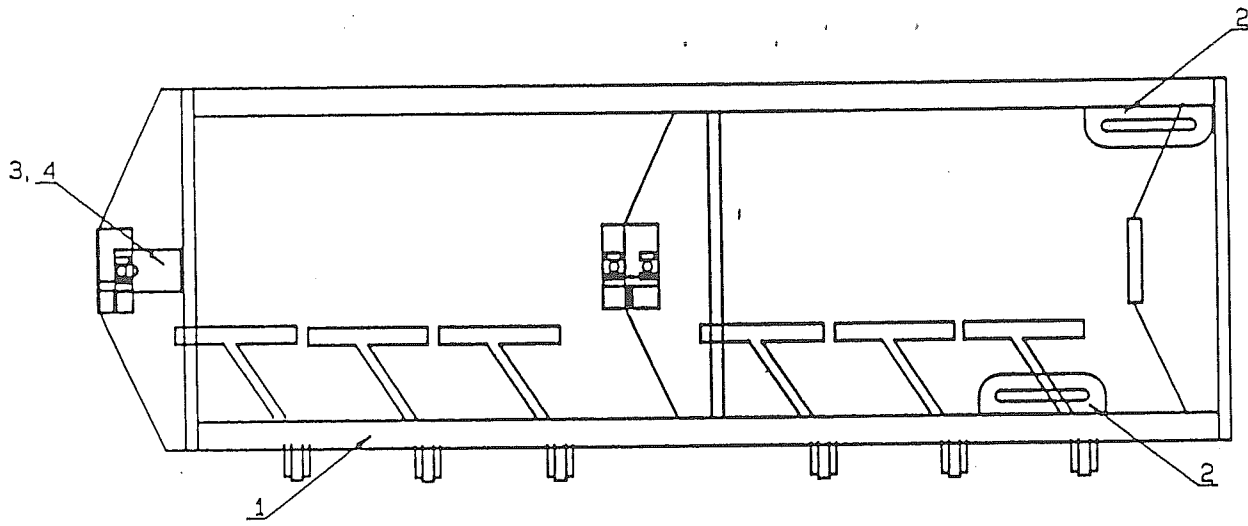
NR	QTY	PART, MATERIAL	DIMENSIONS	PART NO.
GRIZZLY ENGINEERING PTY				
TITLE: FRAME GANG NO.1 (S-80)				
PART NO				
SCALE 1:10		DATE: 13.12.88		DRG NO. S80G1FAV

"S" SERIES FW80 PLATE

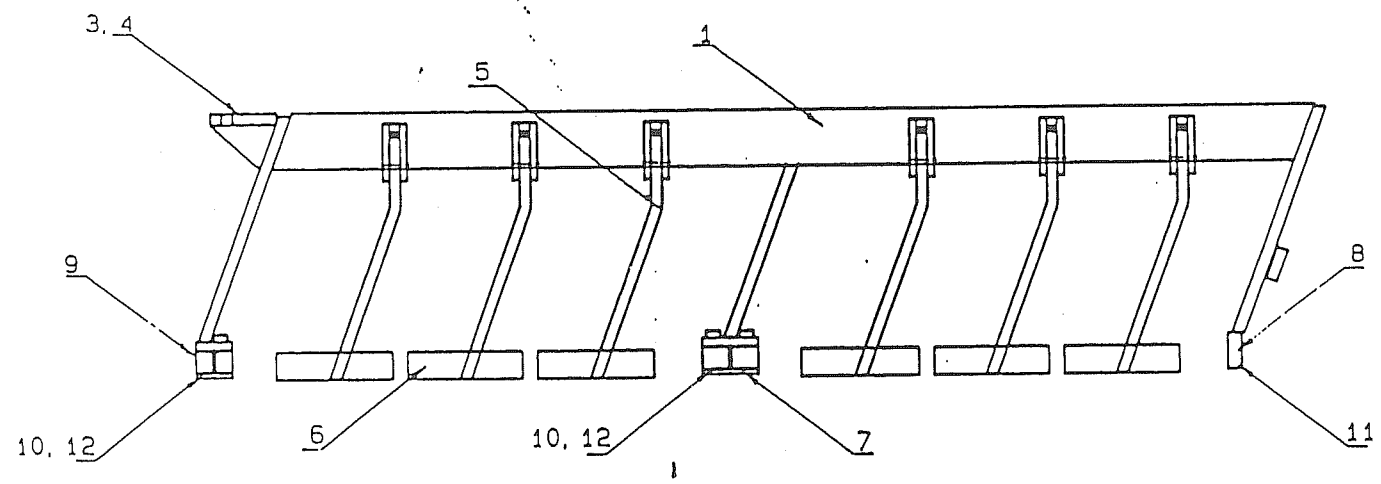
GANG NO.2 - S80G2

<u>NO.</u>	<u>PART NO.</u>	<u>DESCRIPTION</u>
1	S80G2	GANG FRAME
2	LADJA150	SLOT 150MM
3	MAHMA120A	PIVOT PLATE
4	CJAZE005	PIVOT PLATE GUSSET
5	* GFFAA210	SCRAPER ASSEMBLY LEFT
6	MCCHA210	SCRAPER PAD
7	GEGBA000	DOUBLE AXLE CARRIER
8	CBAFM000	AXLE KEEPER (KISSING)
9	GEGDA000	SINGLE AXLE CARRIER LEFT
10	FABHA085	BOLT M16
11	FABGA065A	BOLT M12 WITH HOLE
12	FFBHA000	NUT NYLOC M16

NOTE * CHANGE HAS BEEN MADE. REFER PAGE 44.



TOP VIEW



BACK ELEVATION

29

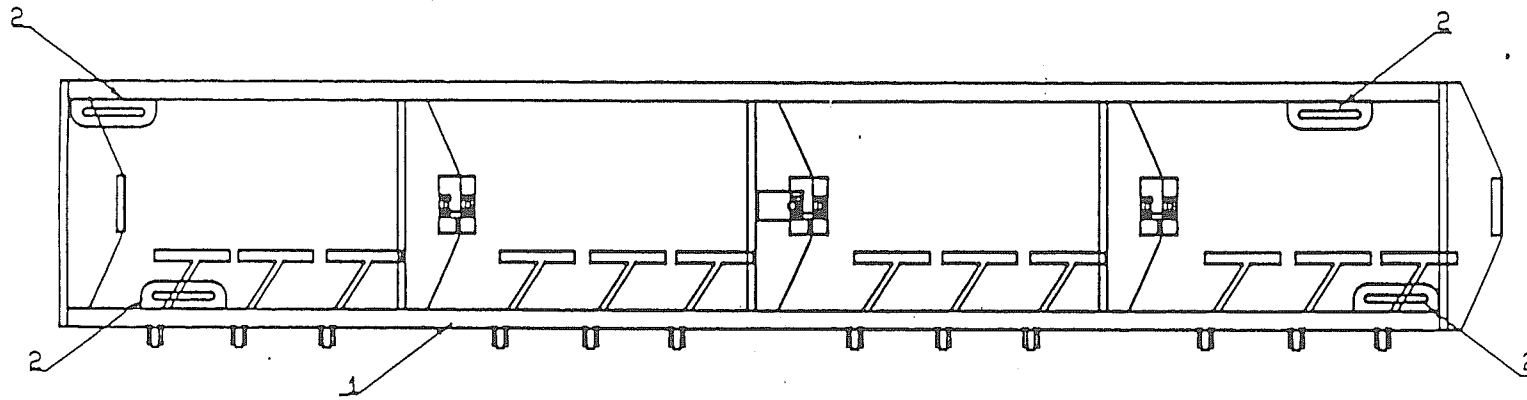
NR	QTY	PART, MATERIAL	DIMENSIONS	PART NO.
GRIZZLY ENGINEERING PTY				
TITLE: FRAME GANG NO.2 (S-80)				
PART NO				
SCALE	1: 10	DATE: 13. 12. 88	DRG NO. S80G2FAV	

"S" SERIES FW80 PLATE

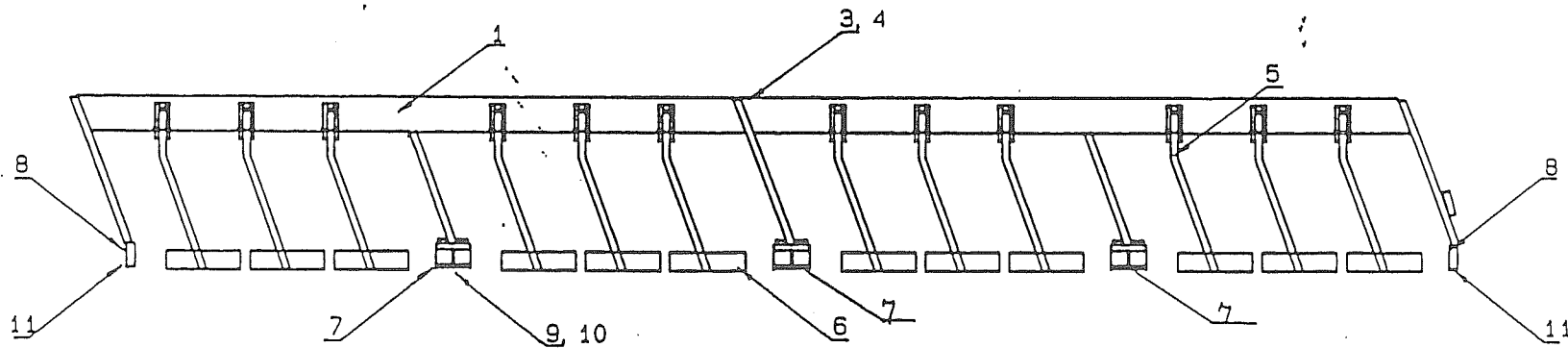
GANG NO.4 - S80G4

<u>NO.</u>	<u>PART NO.</u>	<u>DESCRIPTION</u>
1	S80G4	GANG FRAME
2	LADJA150	SLOT 150MM
3	MAHMA120A	PIVOT PLATE
4	CJAZE005	PIVOT PLATE GUSSET
5	* GFFBA210	SCRAPER ASSEMBLY RIGHT
6	MCCHA210	SCRAPER PAD
7	GEGBA000	DOUBLE AXLE CARRIER
8	CBAFM000	AXLE KEEPER (KISSING)
9	FFBHA000	NUT NYLOC M16
10	FABHA085	BOLT M16
11	FABGA065A	BOLT M12 WITH HOLE

NOTE * CHANGE HAS BEEN MADE. REFER PAGE 44.



TOP VIEW



BACK ELEVATION

NR	QTY	PART, MATERIAL	DIMENSIONS	PART NO.
GRIZZLY ENGINEERING PTY				
TITLE: FRAME GANG NO. 4 (S-80)				
PART NO				
SCALE 1:15		DATE: 13.12.88		DRG NO. S80G4FAV

GANG AXLES USED

NO. OF DISC	PART NO.	
	2 HOLES	1 HOLES
3	MJAMA707A	MJAMA688
4	MJAMA944A	MJAMA925A
5	MJAMB181A	MJAMB162A
6	MJAMB418A	MJAMB399A
7	MJAMB655A	MJAMB636A
8	MJAMB892A	MJAMB873

"S" SERIES
GANG ASSEMBLY

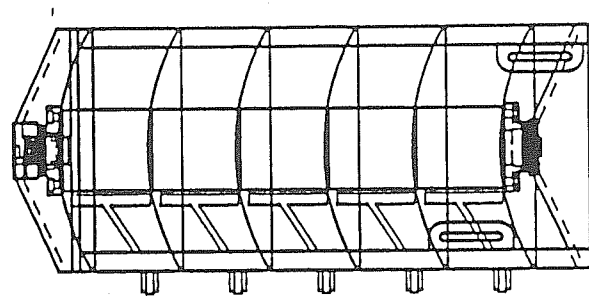
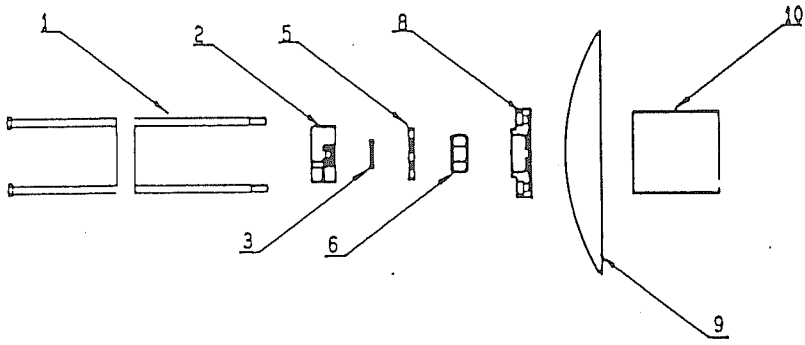
NO.	PART NO.	DESCRIPTION
1	FAAJB260	6 DISC GANG BOLT M20
2	GEGDA000	AXLE CARRIER SINGLE LEFT
3	MGGFA004	4MM SPACER
4	FHCPA035	GANG SPRING
5	BNTAA001	DUST COVER SERIES II
6	BPBBA000	GANG BEARING 38 X 100 SPHERICAL
7	BGB100B1	LEAD BEARING HOUSING SERIES II
8	BHB100B1	THRUST BEARING HOUSING SERIES II
9	D26DSB26	DISC
10	MEGRA230	230MM SPOOL
11	CBAFM000	AXLE CARRIER KISSING

GANG BOLTS USED

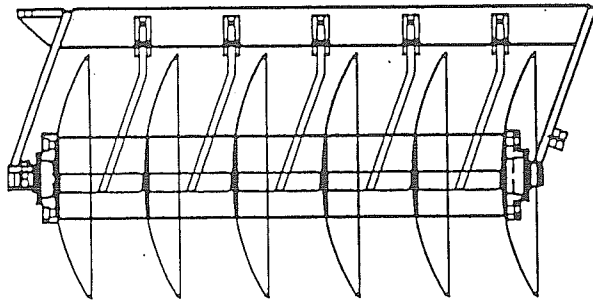
NO. OF DISC	PART NO. M20
3	FAAJA550
4	FAAJA790
5	FAAJB020
6	FAAJB260
7	FAAJB490
8	FAAJB730

- NOTE: - SERIES I BEARING HOUSINGS AND DUST COVER LISTED BELOW.
- BGB100B0 LEAD BEARING HOUSING, SERIES I
 - BHB100B0 THRUST BEARING HOUSING, SERIES I
 - BNTAA000 DUST COVER WITH NEOPRENE INSERT, SERIES I
- FOR MORE INFORMATION ON BEARING HOUSING ASSEMBLIES REFER TO THE MASTER FILE

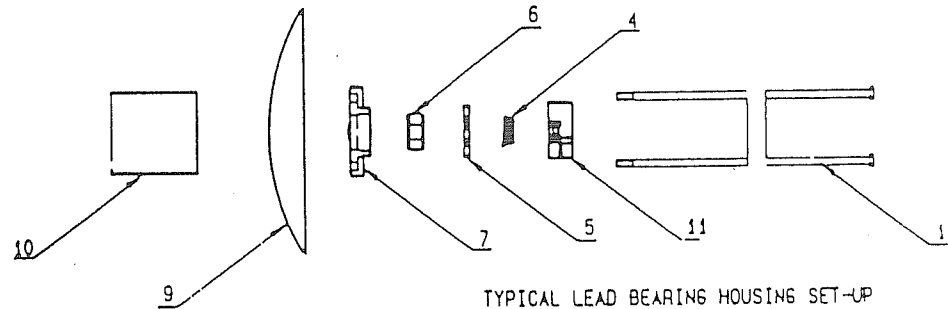
TYPICAL THRUST BEARING HOUSING SET-UP
ON 'S' SERIES MACHINES.



TOP VIEW



BACK ELEVATION



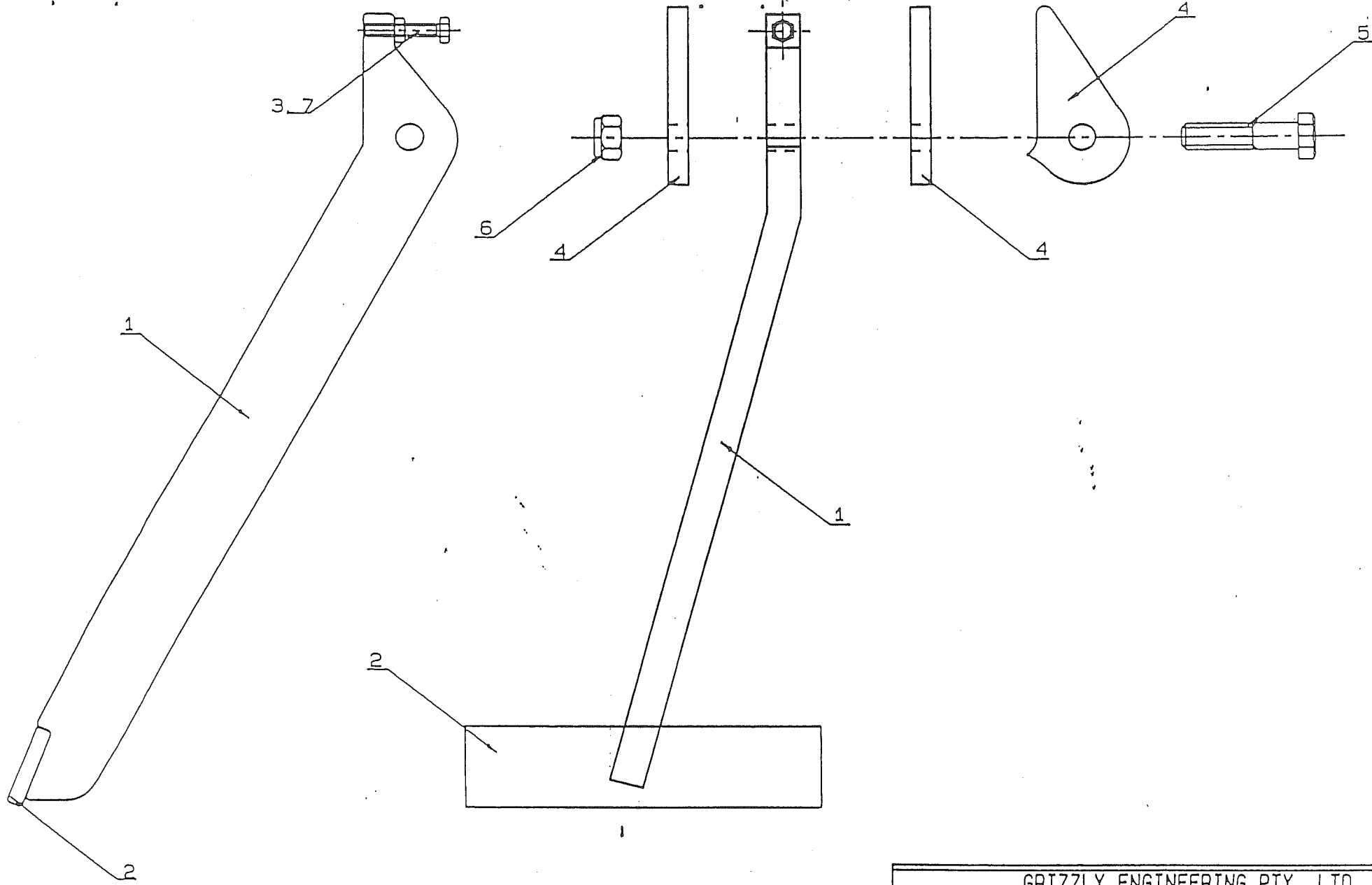
TYPICAL LEAD BEARING HOUSING SET-UP
ON 'S' SERIES MACHINE.

GRIZZLY ENGINEERING PTY. LTD		
TITLE: GANG ASSY "S" 48-64 NO.2		
PART NO.		
SCALE: 1:14.8	DATE: 4.9.89	DRG NO: S48G2

"S" SERIES FW80 PLATE
SCRAPER ASSEMBLY LEFT GFFAA210

<u>NO.</u>	<u>PART NO.</u>	<u>DESCRIPTION</u>
1	* GFFAA210	SCRAPER ASSEMBLY
2	MCCHA210	SCRAPER PAD
3	FEBEA035	SET SCREW M8
4	CBAGG000	SCRAPER LUG
5	FABHA070	BOLT M16
6	FFBHA000	NYLOC NUT M16
7	FFAEA000	BLACK NUT M8

NOTE: GFFBA210 - SCRAPER ASSEMBLY RIGHT.
* CHANGE HAS BEEN MADE. REFER PAGE 44.



GRIZZLY ENGINEERING PTY. LTD		
TITLE: PLATE 20mm "S" SCRAPER		
PART NO.		
SCALE: 1:2.31	DATE: 26.10.89	DRG NO: CGFFJ000

"S" SERIES FW80 PLATE

"S" FOLDING PULL OPTIONS (SPULL)

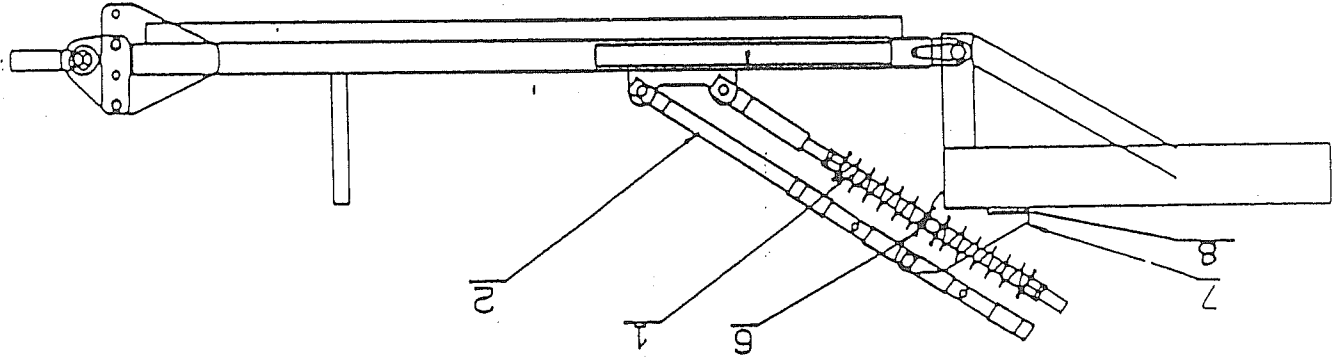
<u>NO.</u>	<u>PART NO.</u>	<u>DESCRIPTION</u>
1	GDFE0000	LEVELING ROD
2	GDFE0001	LOCK UP ASSEMBLY - (LEVELING ROD)
3	GDFG0000	HYDRAULIC PITCH CONTROL
4	GDFE0002	LOCK UP ASSEMBLY - (HYD. PITCH CONTROL)
5	GDFJA000	HYDRAULIC ACCUMULATOR
6	* GKFA0001	SWIVEL ASEMBLY "S" M24 BOLTS
7	* CBBFJ000	TOP LEVEL LUG
8	MAGPA135	FLAT

NOTE: GKFA0000 SWIVEL ASSEMBLY TO SUIT MACHINES PRE SERIAL NO. 487 (M20 BOLTS)
CBBFJ001 TOP LEVEL LUG TO SUIT MACHINES PRE SERIAL NO. 487 (M20 BOLTS)

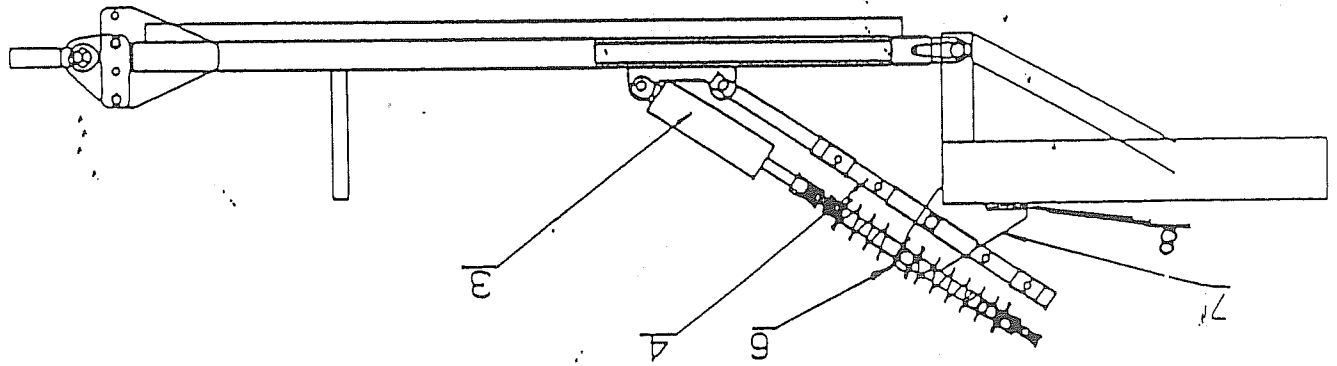
SCALE: 1:14	DATE: 20.9.89	DRG NO: SFPULL
PART NO.		TITLE: "S" FOLDING PULL
GRIZZLY ENGINEERING PTY. LTD		

2937

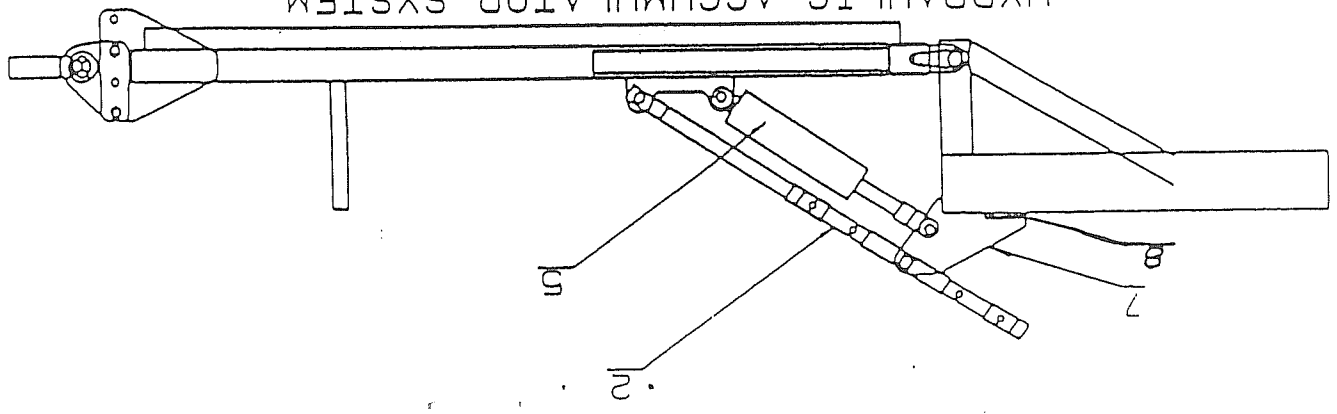
MANUAL PITCH CONTROL WITH LOCK-UP



HYDRAULIC PITCH CONTROL WITH LOCK-UP



HYDRAULIC ACCUMULATOR SYSTEM



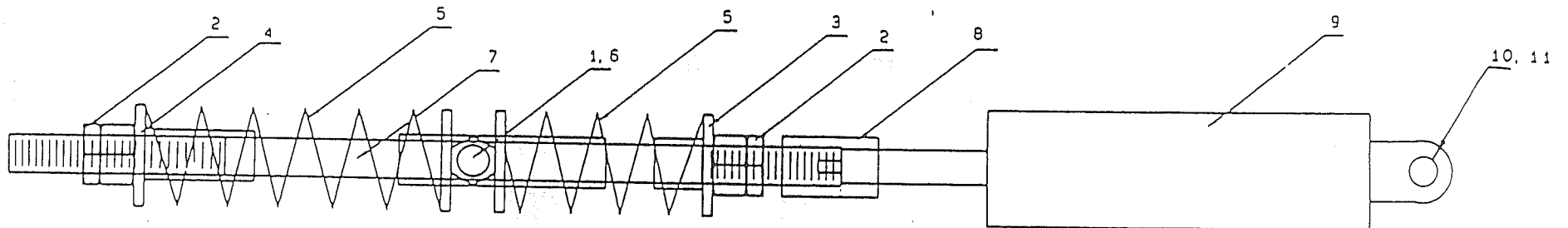
"S" SERIES

HYDRAULIC PITCH CONTROL - GDFG0000

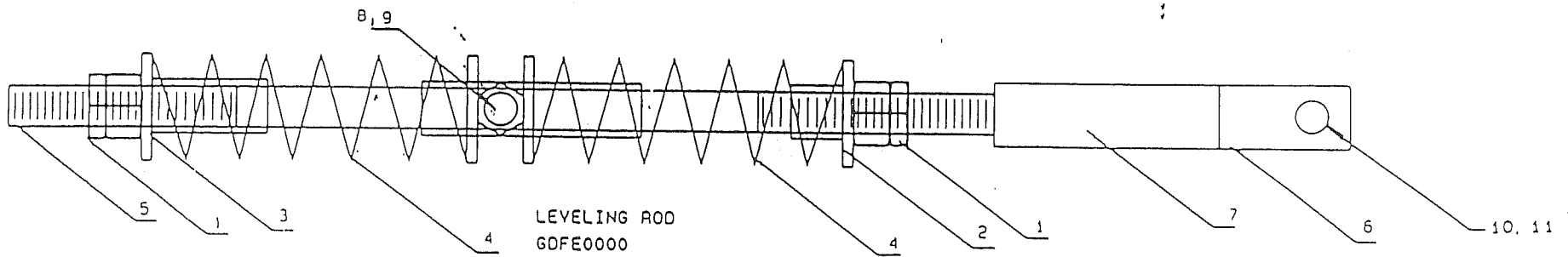
<u>NO.</u>	<u>PART NO.</u>	<u>DESCRIPTION</u>	<u>QTY.</u>
1	FABKA050	BOLT M24	2
2	FFDPA000	HALF NUT 1-1/4 BSW	2
	FFGPA040	SPRING ASSEMBLY NUT 40MM	1
	FFGPA090	SPRING ASSEMBLY NUT 90MM	1
	FHRTA270	SPRING 270	2
	GKFA0001	"S" SWIVEL ASSEMBLY 24MM BOLTS	1
	FPJPA760	THREADED BARE 760MM	1
3	HHFEZ000	ADAPTOR (CROSS RAM)	1
4	HYC250/06	HYD CYL 2.5" X 6" CROSS	1
5	FGBKA135	PIN 1"	1
6	FMCMG000	F/WASHERS	4
<u>LEVEL ROD ASSEMBLY</u>			
	FFDPA000	HALF NUT 1-1/4 BSW	2
	FFGPA040	SPRING NUT ASSY 40MM	1
	FFGPA090	SPRING NUT ASSY 90MM	1
	FHRTA270	SPRING 270	2
	FPJPA760	THREADED BAR 760MM	1
	MAEHA100B	FLAT 50 X 10	2
	MJAPA270A	SQUARE 50 X 50	1
	GKFA0001	"S" SWIVEL ASSEMBLY 24MM BOLTS	1
	FABKA050	BOLT M24	2
	FGBKA135	PIN 1"	1
	FMCMG000	F/WASHER	4

NOTE

* CHANGE HAS BEEN MADE



HYD PITCH CONTROL OPTN.
GDFG0000



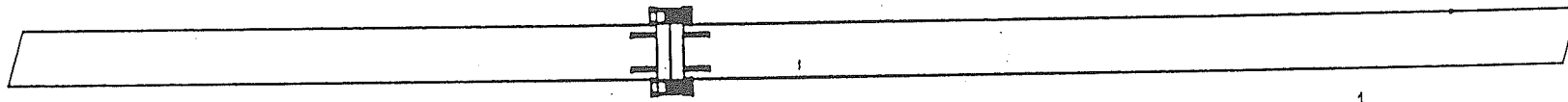
LEVELING ROD
GDFE0000

NR	QTY	PART, MATERIAL	DIMENSIONS	PART NO.
GRIZZLY ENGINEERING PTY				
TITLE: LEVELING ROD				
PART NO GDFE0000				
SCALE 1:3		DATE: 19 04 89		ORG NO. GDFE0000

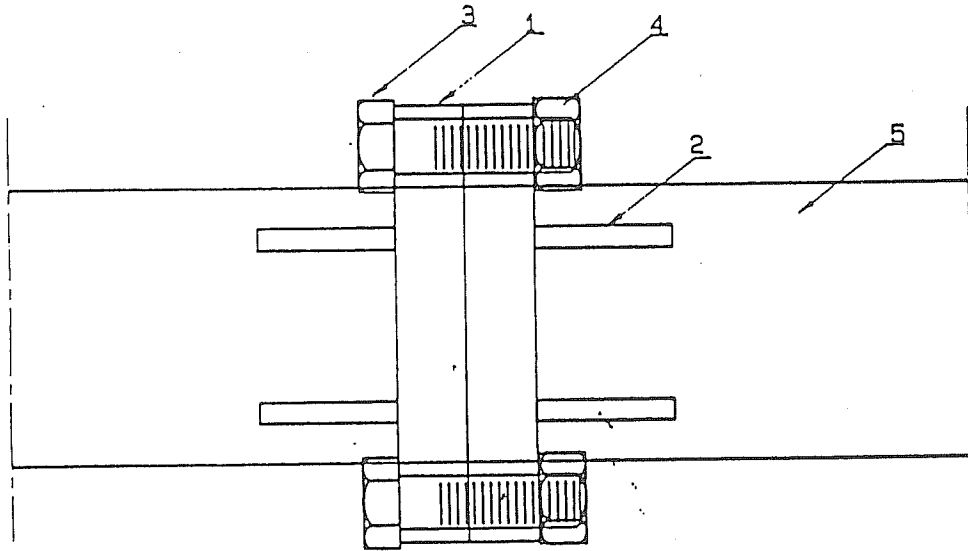
"S" SERIES FW80 PLATE

FRAME FLANGE

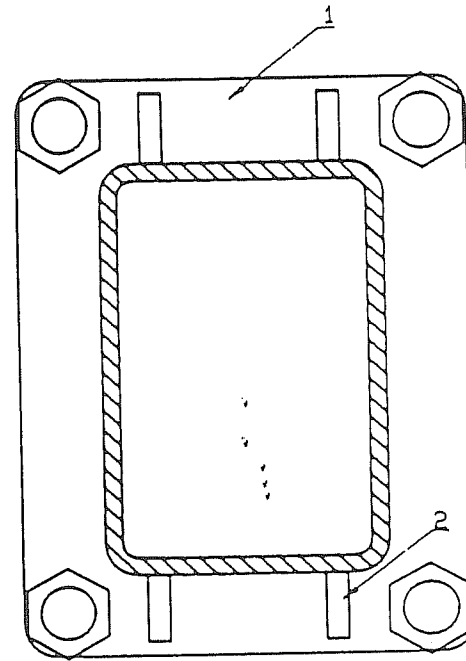
<u>NO.</u>	<u>PART NO.</u>	<u>DESCRIPTION</u>	<u>QTY.</u>
1	CGBGU000	FLANGE	2
2	CABGE000	FLANGE GUSSET	8
3	FABJA075	BOLT M20	4
4	FFBJA000	NUT NYLOC M20	4
5	MHKPA817	FRAME BEAM (RHS)	2



SCALE 1: 5



TOP VIEW



SIDE VIEW

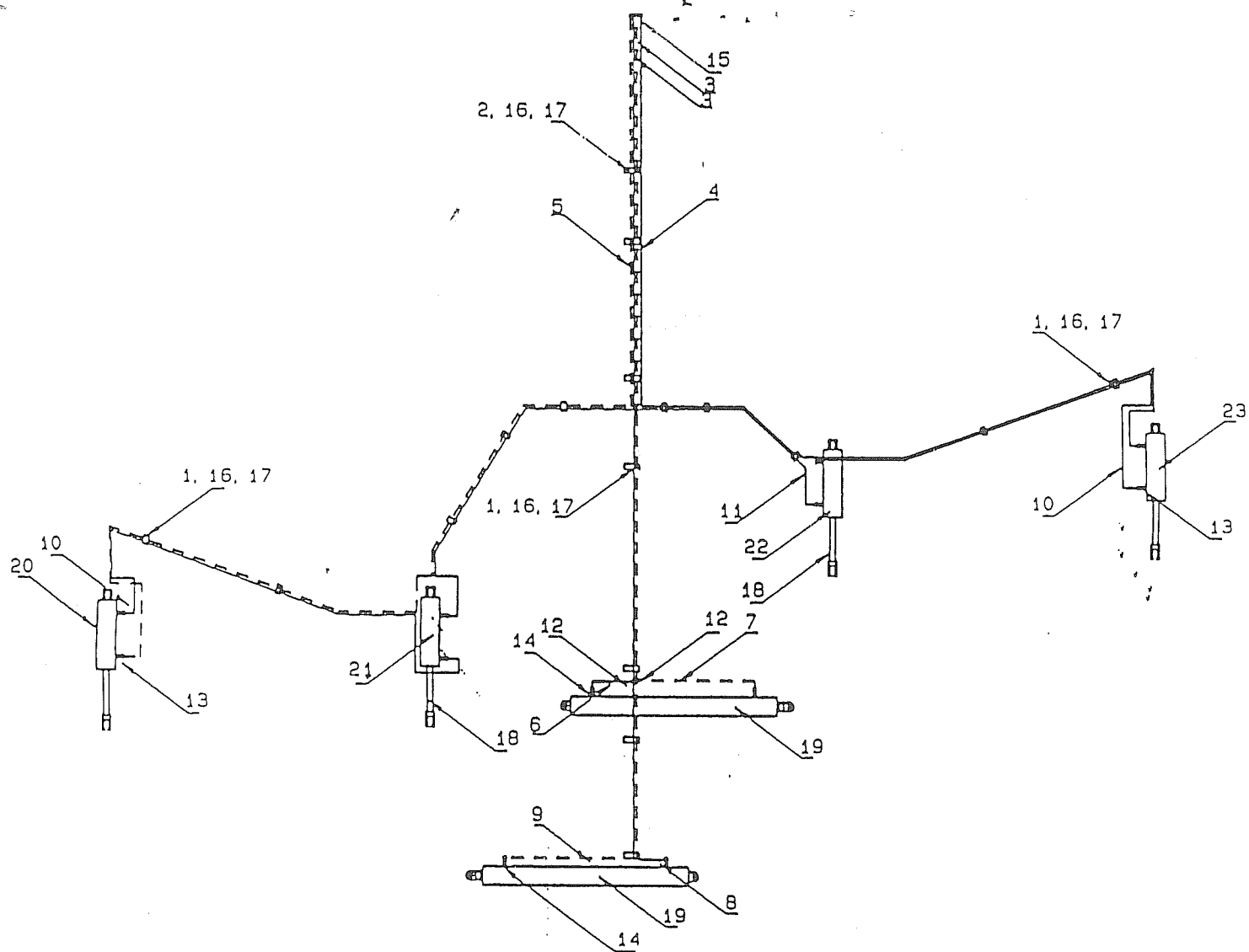
NR	QTY	PART, MATERIAL	DIMENSIONS	PART NO.
GRIZZLY ENGINEERING PTY				
TITLE: FRAME FLANGE				
PART NO				
SCALE	1: 2	DATE: 12.12.88	DRG NO.	SBOFJ

41

"S" SERIES FW80 PLATE

HYDRAULIC KIT - HFGA6080

<u>NO.</u>	<u>PART NO.</u>	<u>DESCRIPTION</u>	<u>QTY.</u>
1	FABEA045	BOLT M8 X.45 GRADE 8.8	14
2	FABEA080	BOLT M8 X 80 GRADE 8.8	3
3	HGCAG600	HOSE (6,600) HHAKBU07 HHAKMU07	2
4	HGCAJ900	HOSE (8,900) HHAKBU07 HHAKMU07	1
5	HGCAK800	HOSE (9,800) HHAKBU07 HHAKMU07	1
6	HGCCA400	HOSE (400) HHAKBU07 BOTH ENDS	1
7	HGCCA900	HOSE (900) HHAKBU07 BOTH ENDS	1
8	HGCCB600	HOSE (1,600) HHAKBU07 BOTH ENDS	1
9	HGCCC100	HOSE (2,100) HHAKBU07 BOTH ENDS	1
10	HGCCD300	HOSE (3,300) HHAKBU07 BOTH ENDS	2
11	HGCCE400	HOSE (4,400) HHAKBU07 BOTH ENDS	1
12	HHAAAA77	FITTING TEE M/M/M. 3/4"	2
13	HHABAM07	FITTING U.N O RING J,I,C,M,N,	10
14	HHABAM07A	FITTING 90° ELBOW/RESTRICTOR	2
15	HHDMNW07	QUICK RELEASE COUPLING 3/4"	4
16	HJBCA000	CLAMP SHELL 3/4-3/4	40
17	HJBFA000	TOP PLATE FOR 3/4 CLAMP	17
18	HRDBA285	TRANSPORT BLOCK (285MM) P.T.E.	2
19	HYP400/48	HYD.CYL. 4" X 48"	2
20	HZP425/12	HYDRAULIC CYL. 4.25" X 12"	1
21	HZP450/12	HYDRAULIC CYL. 4.5" X 12"	1
22	HZP475/12	HYDRAULIC CYL. 4.75" X 12"	1
23	HZP500/12D	HYD.CYL. 5" X 12" D/STOP	1



43

GRIZZLY ENGINEERING PTY. LTD		
TITLE: S-80 HYDRAULIC SYSTEM		
PART NO.		
SCALE: 1:32.612	DATE: 17-10-89	DRG NO: S80HSPC

CHANGES - "S" SERIES FW80 PLATE

REFERENCE		OLD	NEW	DATE OF	SERIAL NO.	NOTES
PAGE	ITEM	PART NO.	PART NO.	CHANGE	OF CHANGE	
12	13	FGBUA380	FGBUA125	1988		FROM 50 X 380mm TO 50 X 425mm
30, 34	5, N	GFFBB210	GFFBA210	1986		LENGTHENED FROM 410mm TO 460mm
26, 28, 34	5, 1	GFFAB210	GFFAA210	1986		LENGTHENED FROM 410mm TO 460mm