

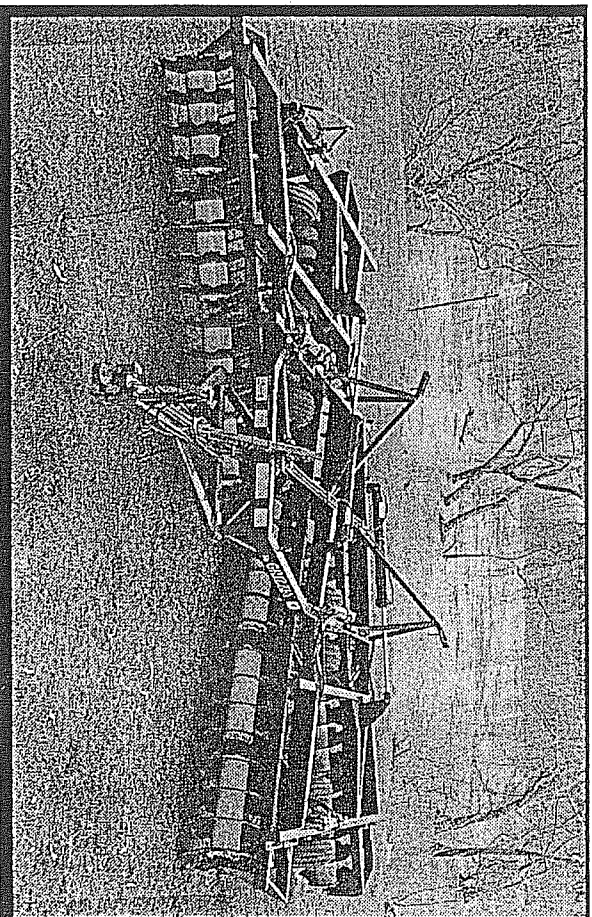
PRIZZY

SPARE PARTS

MANUAL

"S" SERIES FOLDING WING

48 PLATE



"S" SERIES FW48 PLATE

CONTENTS

<u>NO.</u>	<u>PART NO.</u>	<u>DESCRIPTION</u>	<u>PAGE</u>
1		SPECIFICATIONS - GANG BOLTS - GANG AXLES - PULL TONGUES - TOOL KIT	1
2	GAG048	ASSEMBLY KIT	3
3	GAG048	FRAME AND WINGS	5
4	GCG48-64	FRAME ASSEMBLY	7
5	GCG048W	WING FRAME ASSEMBLY R.	9
6	GHGA0002	PULL ASSEMBLY	11
7	GPB0000	PULL TONGUE AND SIDE PLATES	13
8	S48FWBV	FOLDING SYSTEM	15
9	SWTV	WHEEL ASSEMBLY	17
10	GJGA0001	WHEEL LIFT ASSY M/FRAME	19
11	GJFA0001	WHEEL LIFT ASSY W/FRAME	21
12		WHEEL LIFT SIDE PLATE ASSEMBLY	23
13	WMJAA425	HUB AND STUB ASSY 9.00 SINGLE	25
14	WMJAA675	HUB AND STUB ASSY 9.00 DUALS	27
15	S48G1	GANG ASSEMBLY NO.1	29
16	S48G2	GANG ASSEMBLY NO.2	31
17	S48G4	GANG ASSEMBLY NO.4	33
18	S48G2	GANG BEARING HOUSING DETAIL	35
19	GFFAA210	"S" SCRAPER ASSEMBLY LEFT	37
20	SFPULL	"S" LEVELING SYSTEM OPTIONS	39
21	GDFE0000	HYDRAULIC PITCH CONTROL/LEVELING ROD	41
22	HFGA6048	HYDRAULIC KIT	43
23	*	CHANGES	45

"S" SERIES FW48 PLATE

SPECIFICATIONS

WIDTH 5.5M (18')
 WEIGHT 4610KG (10163LBS)
 HORSE POWER 130 - 180

TYRE SIZE 9.00 X 16
 NUMBER OF TYRES 6
 TRANSPORTING WIDTH 4.06M (13'4")

GANG AXLES USED

GANG BOLTS USED

PULL TONGUES AVAILABLE

NO. OF DISC	PART NO.	
	2 HOLES	1 HOLES
3	MJAMA707A	MJAMA688
4	MJAMA944A	MJAMA925A
5	MJAMB181A	MJAMB162A
6	MJAMB418A	MJAMB399A
7	MJAMB655A	MJAMB636A
8	MJAMB892A	MJAMB873

NO. OF DISC	PART NO.
	M20
3	FAAJA550
4	FAAJA790
5	FAAJB020
6	FAAJB260
7	FAAJB490
8	FAAJB730

PART NO.	HOLE SIZE	THICKNESS	TYPE
	MM	MM	
GPBAA000	28	50	FLOPPY
GPBAB000	28	50	SWIVEL
GPEBA000	40	70	FLOPPY
GPEBB000	40	70	SWIVEL
GPDCA000	50	100	FLOPPY
GPDCB000	50	100	SWIVEL

TOOL KIT (SUPPLIED WITH PLOUGH)

QTY.

CHAGH000	DISC LOCK SPANNER	1
CHCFG000	LEVELING SYSTEM SPANNER	1
GNAJG000	FOLDING GANG ADJUST BLOCK	2
TFCBPS00	24MM & 30MM TOOL ASSEMBLY	1

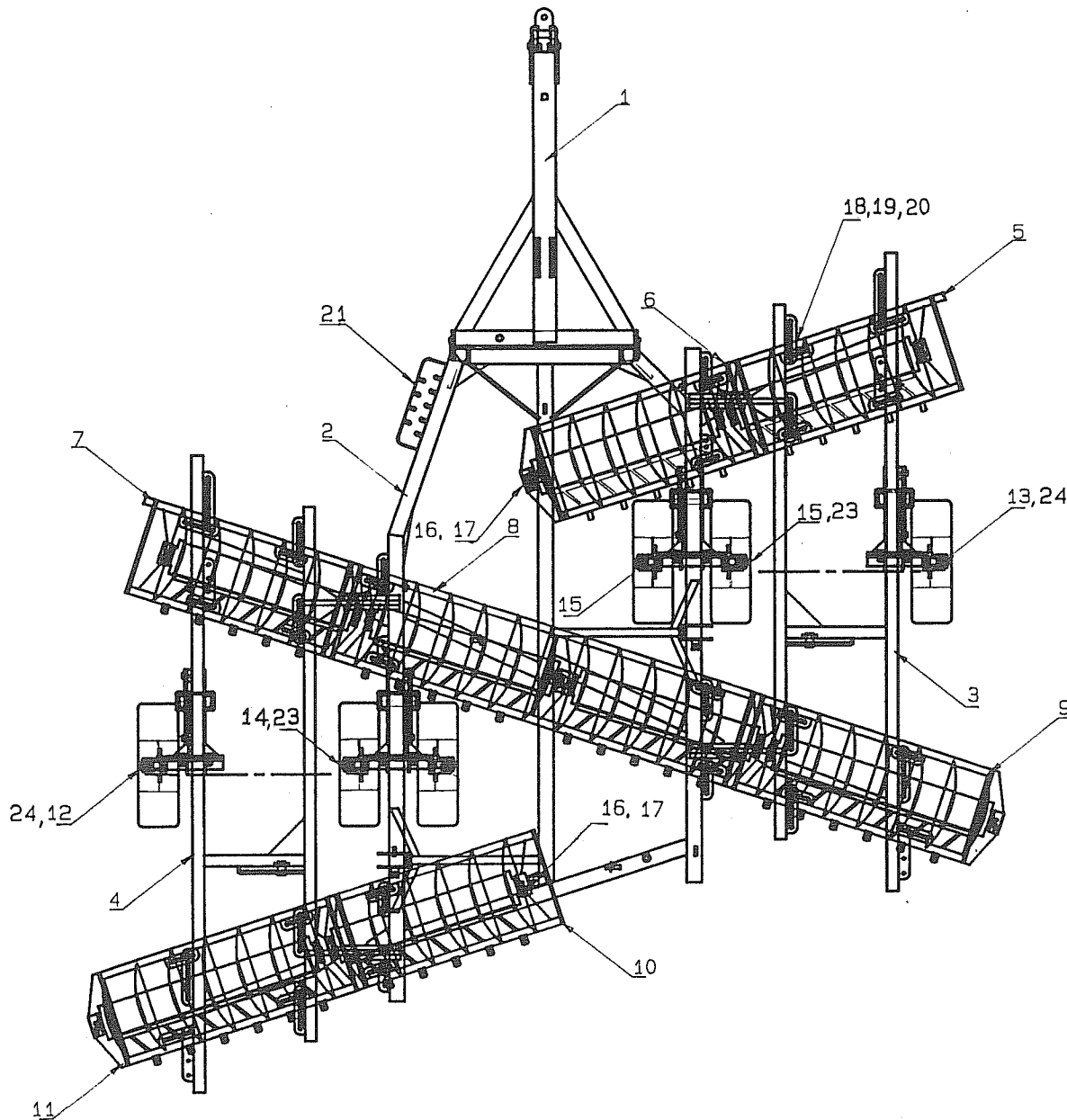
OPTION

GDGAA000	SWIVEL WHEELS (FOLDING WINGS)
----------	-------------------------------

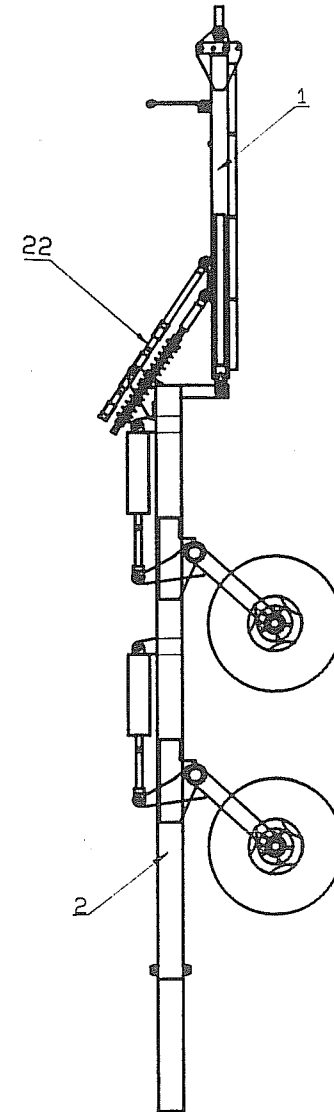
"S" SERIES FW48 PLATE

<u>NO.</u>	<u>PART NO.</u>	<u>DESCRIPTION</u>	<u>QTY.</u>
1	GHGA0002	PULL ASSEMBLY	1
2	GCOG48-64	MAIN FRAME	1
3	GCG048WR	WING ASSEMBLY (RIGHT)	1
4	GCG048WL	WING ASSEMBLY (LEFT)	1
5	S48G1	GANG NO.1	1
6	S48G2	GANG NO.2	1
7	S48G3	GANG NO.3	1
8	S48G4	GANG NO.4	1
9	S48G5	GANG NO.5	1
10	S48G6	GANG NO.6	1
11	S48G7	GANG NO.7	1
12	GJFA0001	WHEEL LIFT ASSEMBLY L.H. WING	1
13	GJFA0002	WHEEL LIFT ASSEMBLY R.H. WING	1
14	GJGA0001	WHEEL LIFT ASSEMBLY L.H. M/FRAME	1
15	GJGA0002	WHEEL LIFT ASSEMBLY R.H. M/FRAME	1
16	FABKA075	BOLT M24	3
17	FFBKA000	NYLOC NUT M24	3
18	FABJA075	BOLT M20	24
19	FFAJA000	NUT BLACK M20	24
20	FMDJJN00	SQ. WASHER 20 ID X 50 OD X 5 MM	48
21	TEGF0000	TOOL BOX	1
22	GDFE0000	LEVELING SYSTEM	1
23	* WMJAA675	H60 HUB AND STUB ASSY 9.00 DUELS	2
24	* WMJAA425	H60 HUB AND STUB ASSY 9.00 SINGLE	2

NOTE: MACHINES BUILT PRE 1987 MAY HAVE H40 OR H50 HUBS & STUB FITTED.
REFER TO MASTER FILE FOR MORE INFORMATION.



TOP VIEW



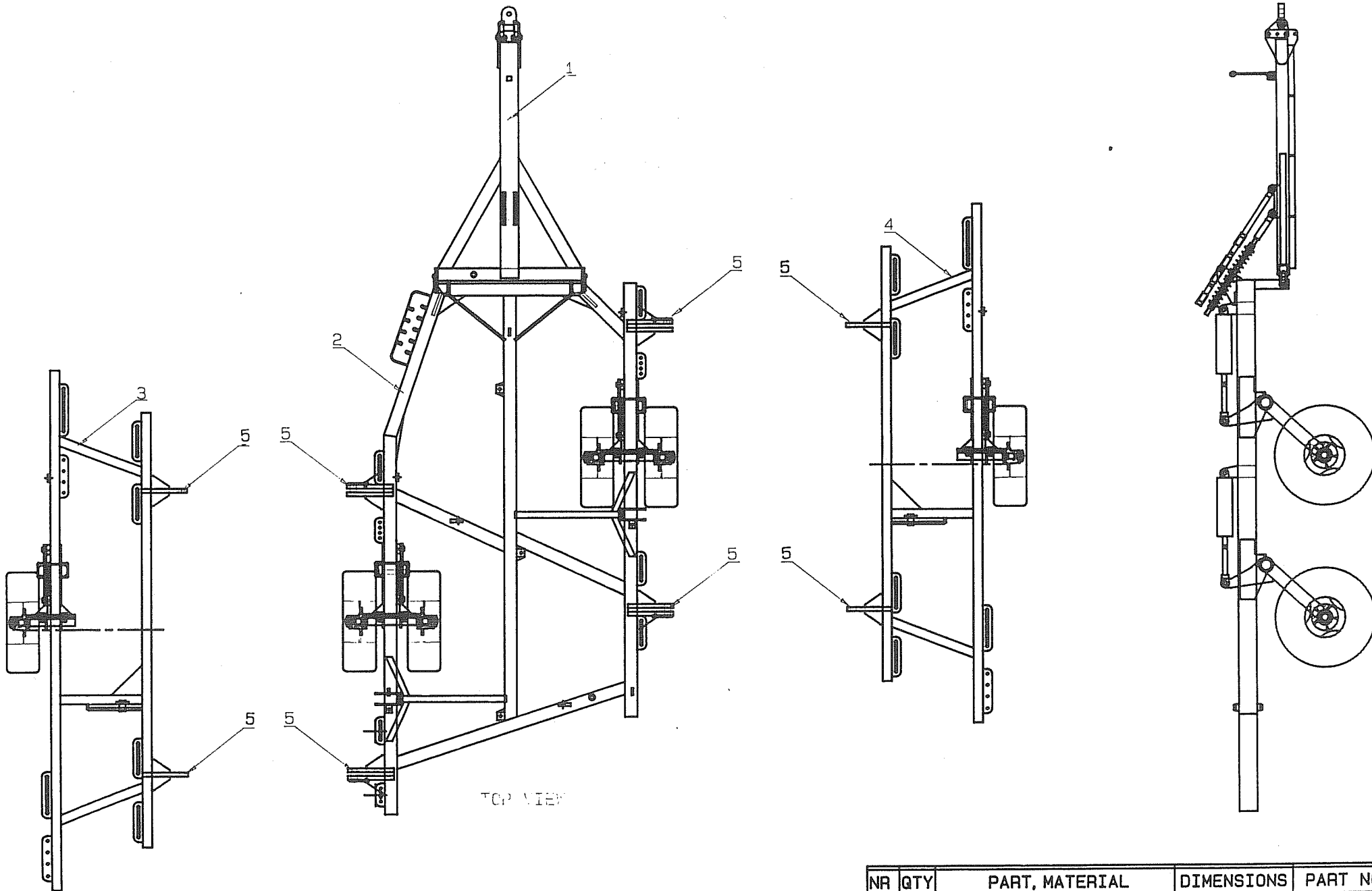
3

GRIZZLY ENGINEERING PTY. LTD			
TITLE:	"S" 48 PLATE		
PART NO.			
SCALE:	1: 32.6	DATE:	6.9.89
		DRG NO:	GAG048

"S" SERIES FW48 PLATE

FRAME AND WINGS

<u>NO.</u>	<u>PART NO.</u>	<u>DESCRIPTION</u>	<u>QTY.</u>
1	GHGA0002	PULL ASSEMBLY	1
2	GCG48-64	MAIN FRAME	1
3	S48WING	WING ASSEMBLY	1
4	S48WING	WING ASSEMBLY	1
5	CGBGP003	WING HING PLATE	8



TOP VIEW

5

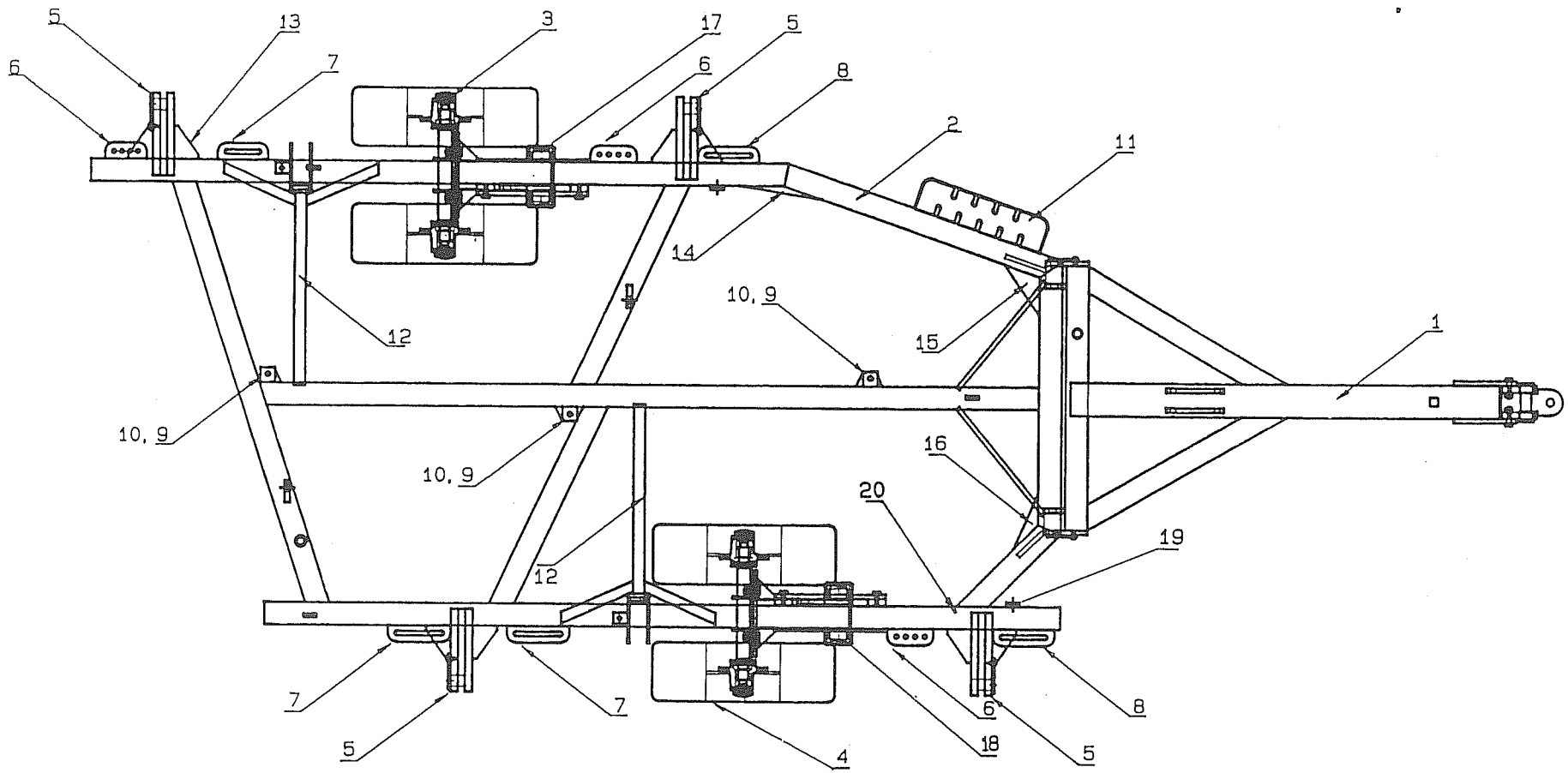
NR	QTY	PART, MATERIAL	DIMENSIONS	PART NO.
GRIZZLY ENGINEERING PTY				
TITLE: FRAME AND WINGS (S-48) MK1				
PART NO				
SCALE		1: 30	DATE: 29.03.89	DRG NO. S48FM1

"S" SERIES - FW48 PLATE

MAIN FRAME GCG48-64

<u>NO.</u>	<u>PART NO.</u>	<u>DESCRIPTION</u>	<u>QTY.</u>
1	GHGA0002	PULL ASSEMBLY	1
2	GCG48-64	MAIN FRAME	1
3	* WMJAA675	HUB AND STUB ASSEMBLY H60	2
4	* WSJddb00	H60 RIM/TYRE ASSEMBLY 9.00X16 8 PLY	4
5	CGBGP003	WING HINGE PLATE	8
6	LBDJA132	SERIES OF HOLES	3
7	LADJA200	SLOT 200 LONG	3
8	LADJA200	SLOT 200 LONG	2
9	MAHJA070A	GANG PIVOT	3
10	CJAZE002	GANG PIVOT GUSSET	6
11	GNBHF000	TOOL BOX	1
12	GNBKG000	WING LOCK UP ASSEMBLY	2
13	CABGG003	WING HING GUSSET	8
14	CABGH001	MAIN FRAME GUSSET	2
15	CABGH005	MAIN FRAME GUSSET	2
16	CABGH000	MAIN FRAME GUSSET	2
17	GJGA0001	WHEEL LIFT ASSEMBLY (LEFT)	1
18	GJGA0002	WHEEL LIFT ASSEMBLY (RIGHT)	1
19	CBBHM001	RAM LUG	2
20	GNBEF000	DEPTH GAUGE S24-S100	1

NOTE; MACHINES BUILT PRE 1987 MAY HAVE H40 OR H50 HUBS AND STUBS FITTED
REFER TO MASTER FILE FOR MORE INFORMATION.



GRIZZLY ENGINEERING PTY. LTD		
TITLE: FRAME 48-64		
PART NO. ----		
SCALE: 1: 21	DATE: 5-9-89	DRG NO: 60048-64

"S" SERIES FW48 PLATE

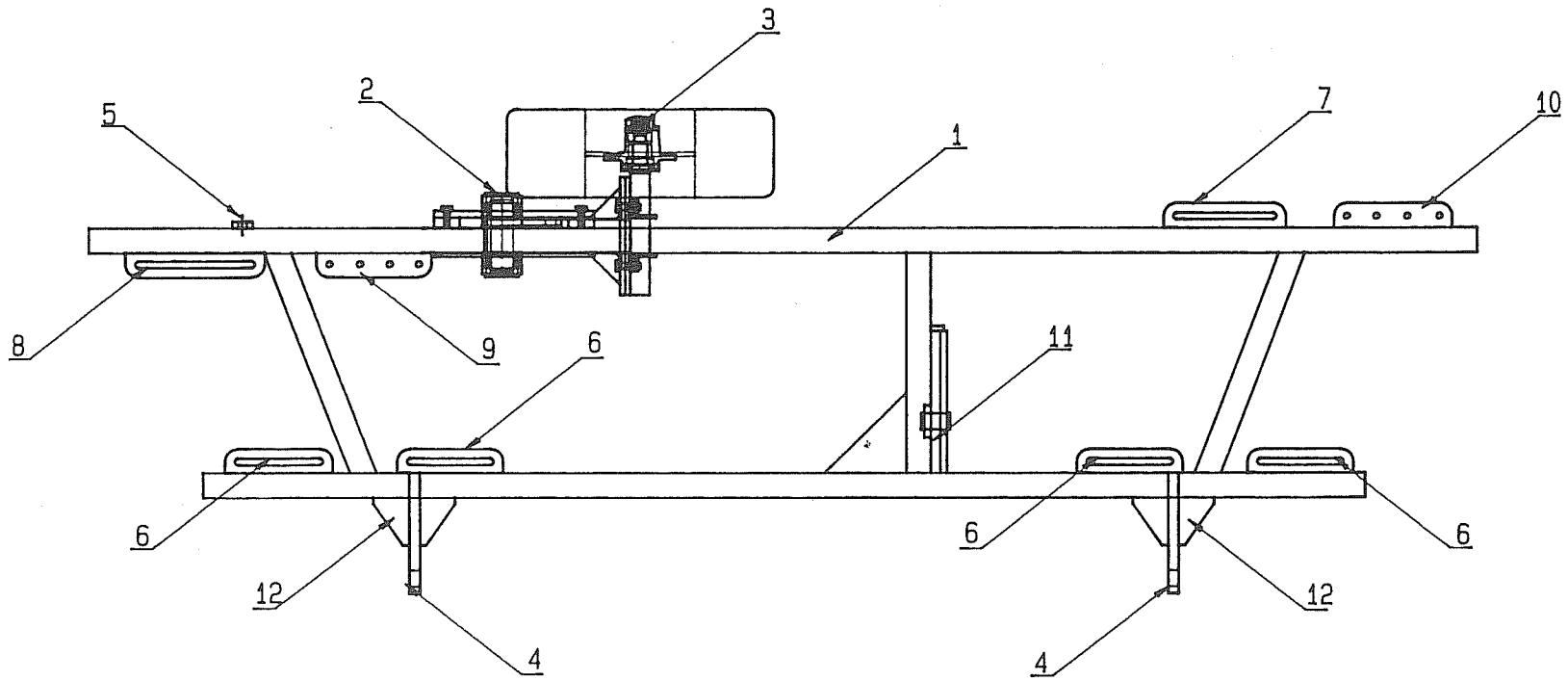
WING FRAME ASSEMBLY RIGHT - GCG048W

<u>NO.</u>	<u>PART NO.</u>	<u>DESCRIPTION</u>	<u>QTY.</u>
1	GCG048W	S48 WING FRAME	1
2	GJFA0002	WHEEL LIFT ASSY LEFT	1
3	* WMJAA425	HUB & STUB ASSEMBLY H60 9.00 SINGLE	1
4	CGBGP003	WING HINGE PLATE	2
5	CBBHM001	RAM LUG	1
6	LADJA250	SLOT 250MM	4
7	LADJA300	SLOT 300MM	1
8	LADJA350	SLOT 350MM	1
9	LBDJA273	SERIES OF HOLES 273MM	1
10	LBDJA291	SERIES OF HOLES 291MM	1
11	CBBGM001	WING LIFT ARM	1
12	CABGG003	HINGE PLATE GUSSET	4

NOTE: LEFT WING MIRROR IMAGE OF RIGHT WING.

GJFA0001 WHEEL LIFT ASSEMBLY (LEFT) FITTED TO L.H. WING.

* MACHINES BUILT PRE 1987 MAY HAVE H40 OR H50 HUB AND STUBS FITTED.
REFER TO MASTER FILE



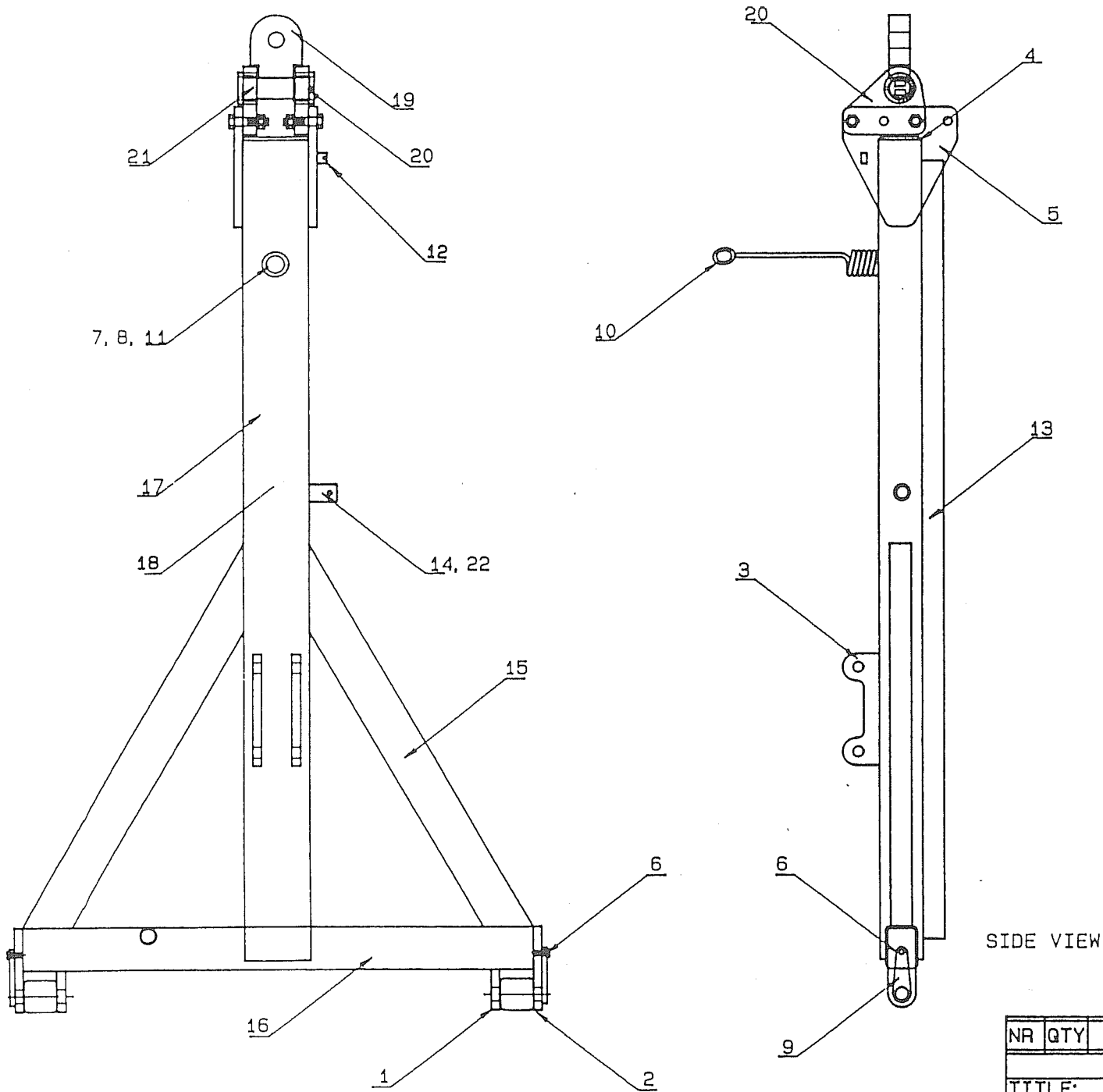
TOP VIEW

LEFT WING MIRROR IMAGE OF RIGHT WING

GRIZZLY ENGINEERING PTY. LTD			
TITLE: S48 WING			
PART NO. ---			
SCALE: 1:16	DATE: 5-9-89	DRG NO: S48WING	

"S" SERIES FW48 PLATE
PULL ASSEMBLY GHGA0002

<u>NO.</u>	<u>PART NO.</u>	<u>DESCRIPTION</u>	<u>QTY.</u>
1	CBCFJ000	PULL BACK LUG INNER	2
2	CBCFJ001	PULL LUG OUTER	2
3	CBCFJ002	LEVEL LUG PULL	2
4	CFBFE000	END PLATE	1
5	CFCFJ000	PULL SIDE PLATE	2
6	FABGA025	BOLT M12	2
7	FABJA045	BOLT M20	1
8	FFBJA000	NUT NYLOC M20	1
9	FGBPA135	PULL PIN	2
10	FHKNA440	SPRING HOSE HOLDER	1
11	FMAJE000	F/WASHER 20 ID X 40 OD	2
12	MAEEA025A	FLAT 25 X 10	1
13	MAEHB950	FLAT 50 X 10	2
14	MECFA065A	PIPE	2
15	MHHGB864	RHS	2
16	MHHHB200	RHS	1
17	MHKPB950	PULL BEAM (RHS)	1
18	HJBHA000	BASE PLATE FOR 3/4 HYD. HOSE	2
19	CBCFU001	PULL TONGUE 50MM FLOPPY	1
20	GNDMF001	S PULL SIDE PLATE RIGHT	1
21	GNDMF000	S PULL SIDE PLATE LEFT	1
22	GKFE0000	"S" PARKING JACK	1



TOP VIEW

SIDE VIEW

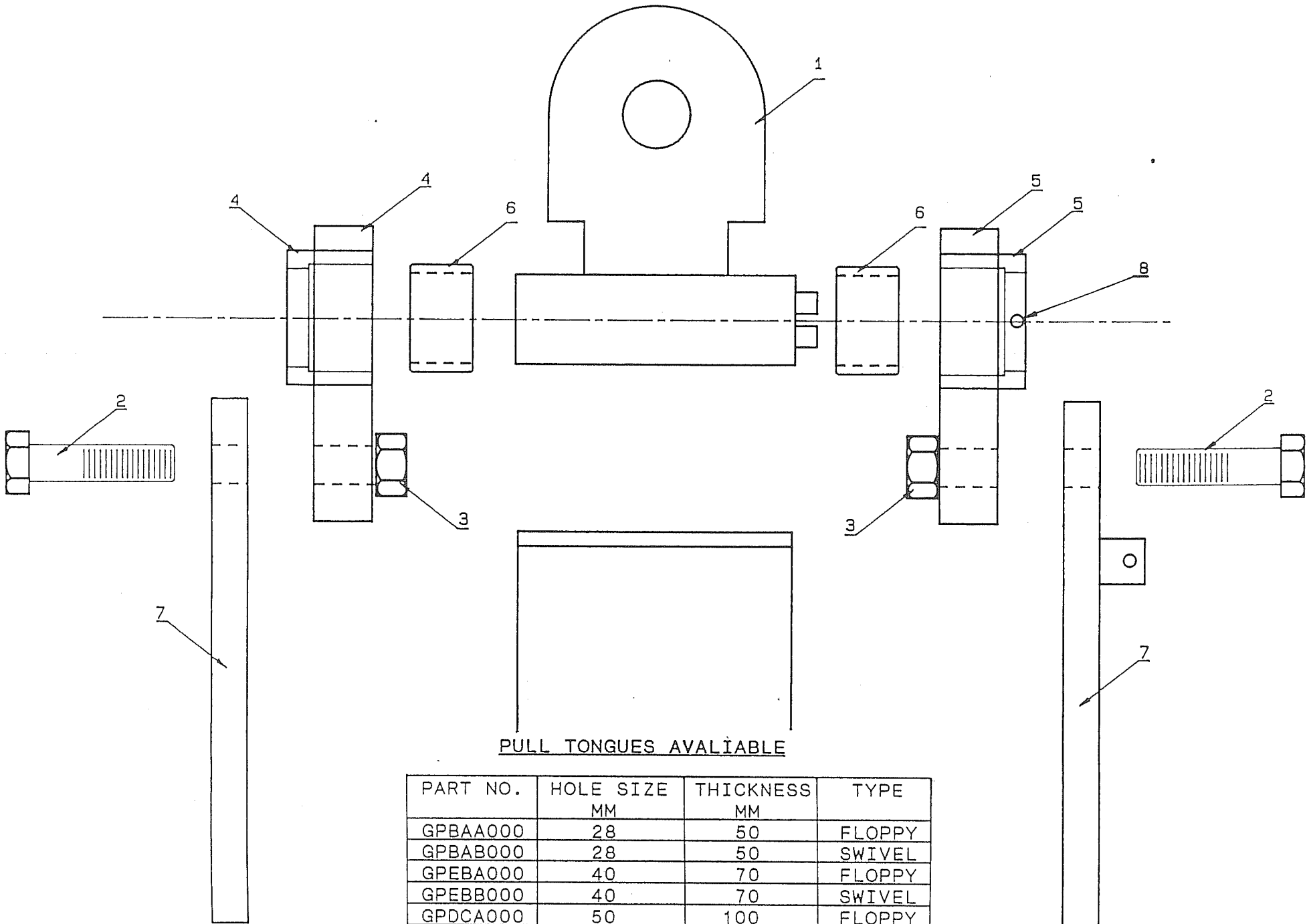
11

NR	QTY	PART, MATERIAL	DIMENSIONS	PART NO.
GRIZZLY ENGINEERING PTY				
TITLE: "S" 48-80 PULL				
PART NO GHGA0002				
SCALE 1:10			DATE 23.8.89	DRG NO GHGA0002

"S" SERIES

PULL TONGUE AND SIDE PLATES -

<u>NO.</u>	<u>PART NO.</u>	<u>DESCRIPTION</u>	<u>QTY.</u>
1	GPEBA000	FLOPPY PULL TONGUE 40 X 70MM	1
2	FABJA080	M20 BOLT	4
3	FFBJA000	M20 NYLOC NUT	4
4	GNDMF000	"S" PULL SIDE PLATE ASSY LEFT	1
5	GNDMF001	"S" PULL SIDE PLATE ASSY RIGHT	1
6	BJEGA035	VESCONITE BUSH	2
7	CGCFJ000	PULL SIDE PLATE	2
8	FKBCA080	R CLIP (HAIR PIN)	1



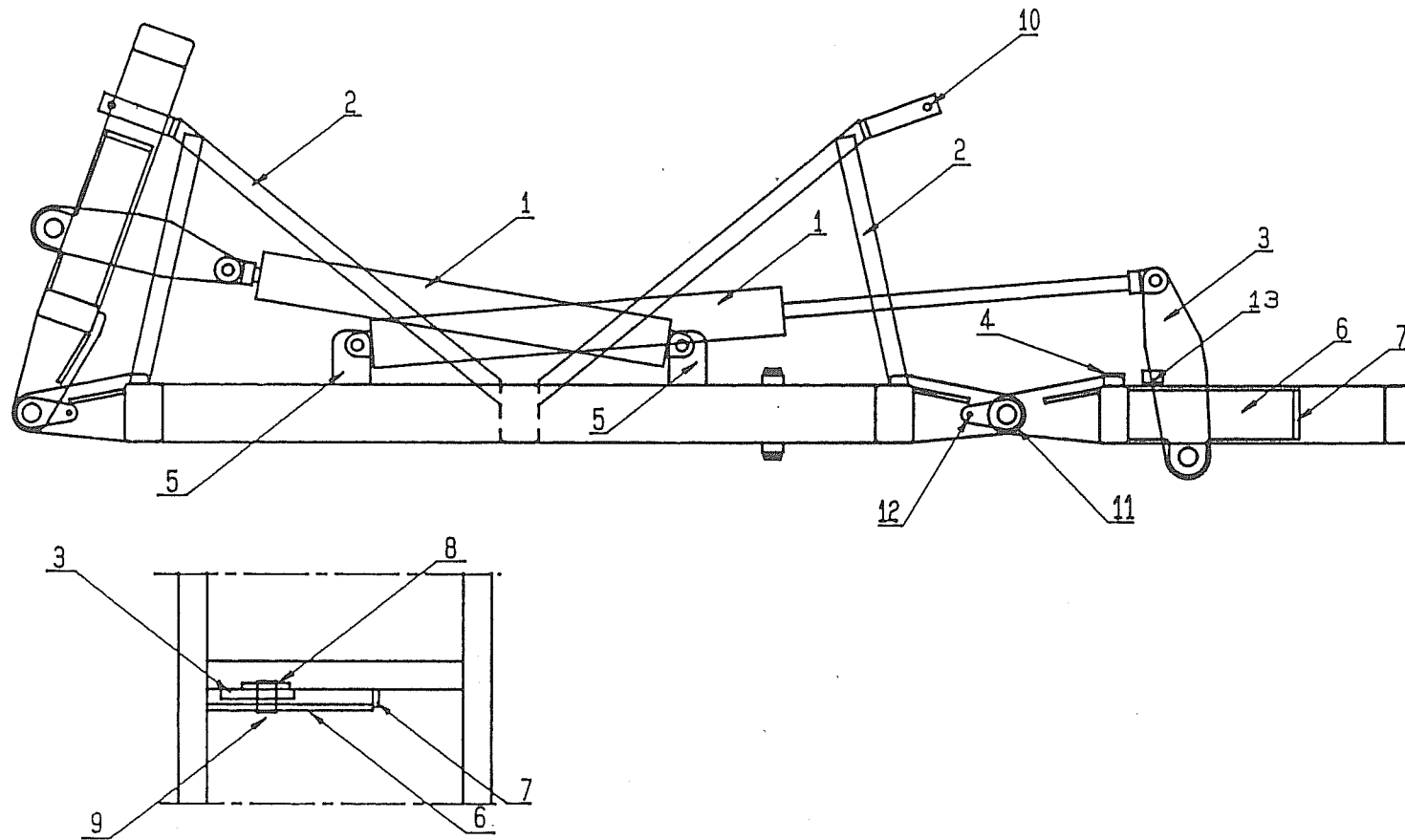
NR	QTY	PART, MATERIAL	DIMENSIONS	PART NO.
GRIZZLY ENGINEERING PTY				
TITLE:		PULL TONGUE & SIDE PLATES		
DATE:		PART NO.		

"S" SERIES FW48 PLATE

WING FOLDING SYSTEM

<u>NO.</u>	<u>PART NO.</u>	<u>DESCRIPTION</u>
1	HYP400/36	HYD. CYL. 4 X 36
2	GNBKG000	WING LOCK UP ASSEMBLY
3	CBBGM001	WING LIFT ARM
4	CGBGPO00	BLOCK PLATE 100 X 60
5	CBBGM003	RAM LUG
6	CGBGJ001	SIDE PLATE
7	MAGGA130	FLAT
8	CBBGJ000	SIDE LUG PLATE
9	MDDEA080	PIN 50MM
10	FGAFA145	WING LOCKUP PIN
11	* FGBUA125	WING HINGE PIN
12	FABGA025	BOLT M12
13	CGBGP001	BLOCK PLATE 60 X 40

NOTE: * CHANGE HAS BEEN MADE REFER PAGE 45



TYPICAL S-48, S-56 & S-64.

15

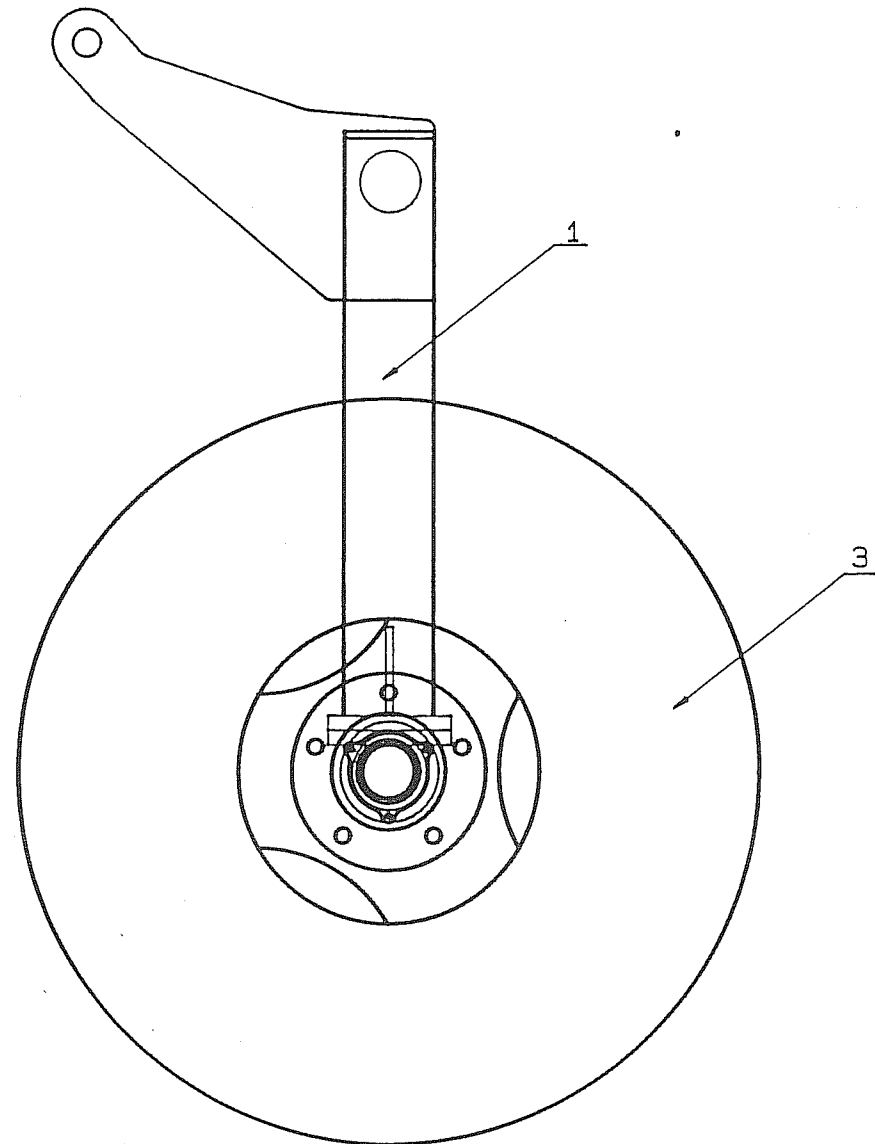
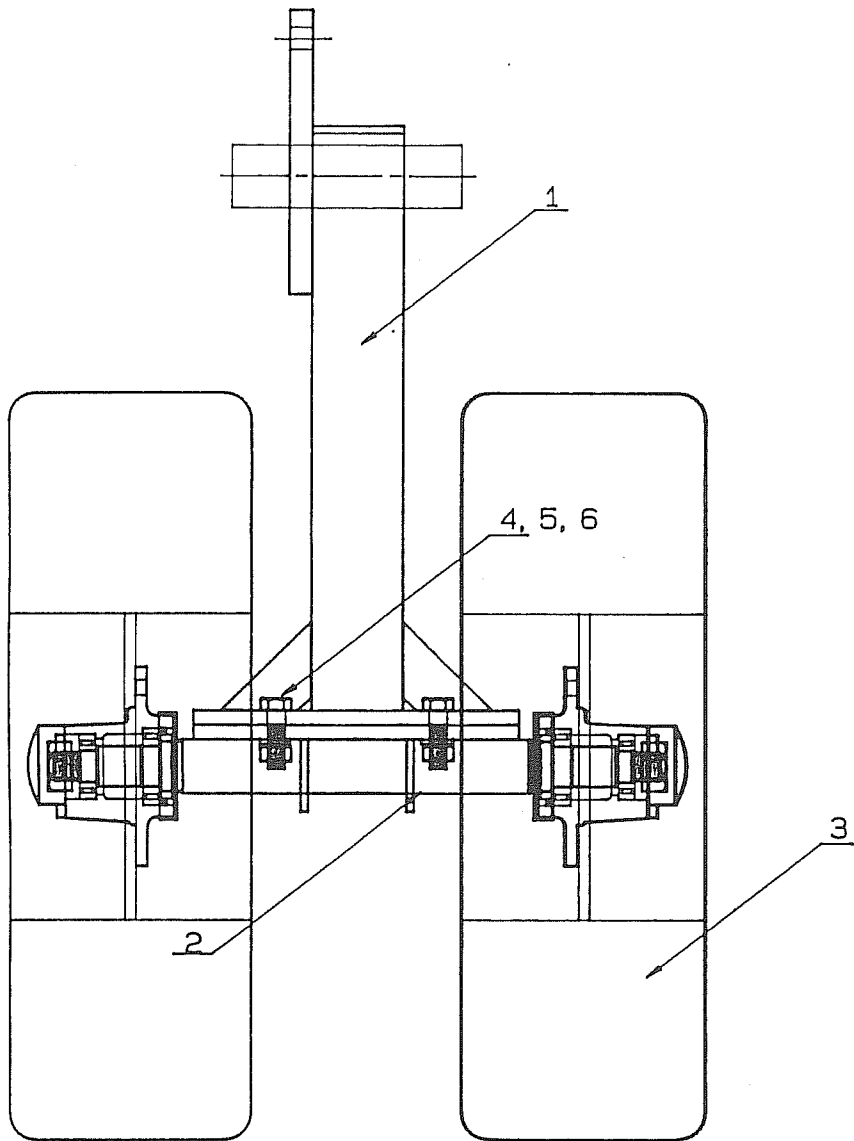
GRIZZLY ENGINEERING PTY. LTD		
TITLE: FRAME & WING ASSY. (BACK VIEW)		
PART NO. ---		
SCALE: 1: 13.8	DATE: 5-9-89	DRG NO: S48FWBV

"S" SERIES FW48 PLATE

WHEEL ASSEMBLY H60

<u>NO.</u>	<u>PART NO.</u>	<u>DESCRIPTION</u>	<u>QTY.</u>
1	GJGA0001	WHEEL LIFT ASSEMBLY LEFT	1
2	* WMJAA675	HUB & STUB ASSY H60 9.00 DUALS	1
3	* WSJDDDB00	H60 RIM & TYRE ASSY 9.00 X 16 8PLY	2
4	FABJA065	BOLT M20	4
5	FFBJA000	NYLOC NUT M20	4
6	FMCJG000	WASHER 20 ID X 40 OD	4

NOTE: * MACHINES BUILT PRE 1987 MAY HAVE H40 OR H50 HUBS AND STUBS FITTED.
REFER TO MASTER FILE FOR MORE INFORMATION.



17

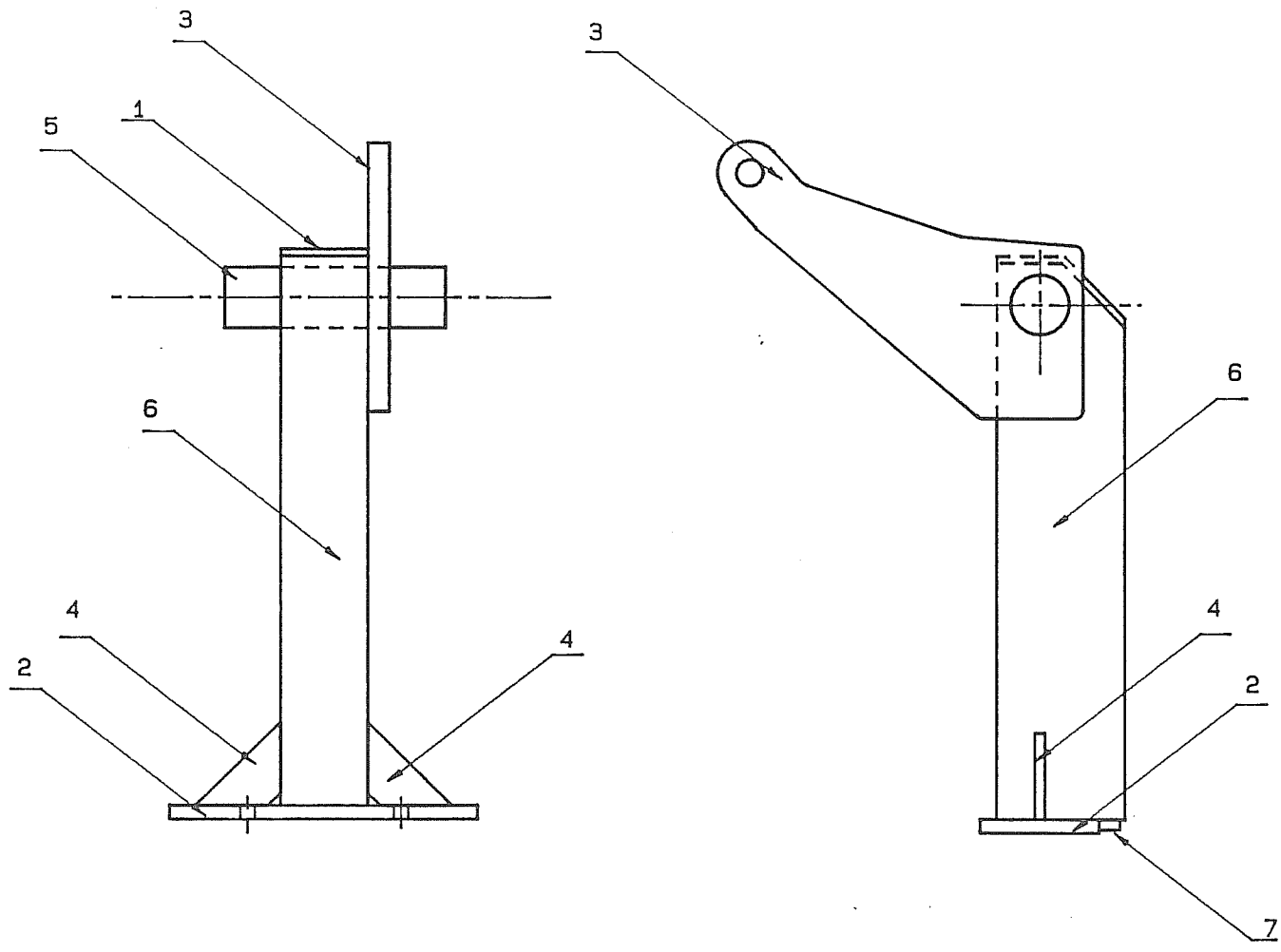
NR	QTY	PART, MATERIAL	DIMENSIONS	PART NO.
GRIZZLY ENGINEERING PTY				
TITLE: WHEEL ASSY S-SERIES 9.00 DUELS				
PART NO				
SCALE 1: 6		DATE: 19.09.88		DRG NO. SWTV

"S" SERIES FW48 PLATE

MAIN FRAME WHEEL LIFT ASSEMBLY LEFT - GJGA0001

<u>NO.</u>	<u>PART NO.</u>	<u>DESCRIPTION</u>
1	CFEGE000	END CAP 8MM
2	CGEFH000	AXLE BASE PLATE 16MM
3	CGEGM001	WHEEL ASSEMBLY LIFTING ARM
4	CJAZG000	GUSSET
5	MDDJA255	ROUND
6	MHKPA643A	WHEEL ASSEMBLY LEG
7	MAFEA085	FLAT 12MM X 25MM

NOTE: - GJFA0001 WHEEL LIFT ASSEMBLY LEFT IS A MIRROR IMAGE OF
GJFA0002 WHEEL LIFT ASSEMBLY RIGHT.



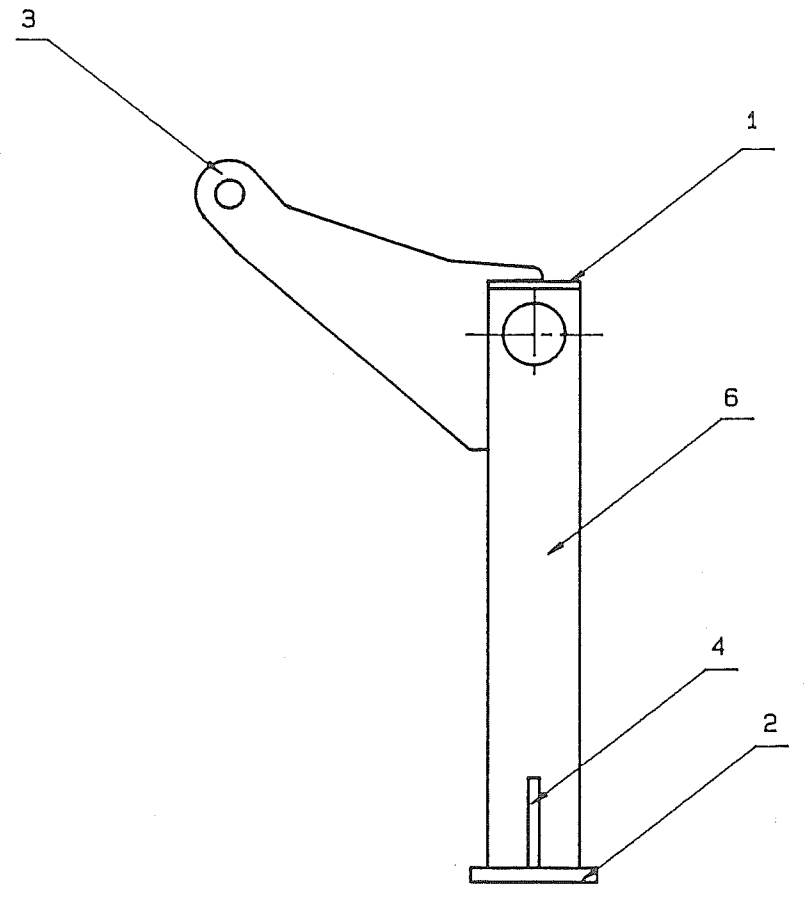
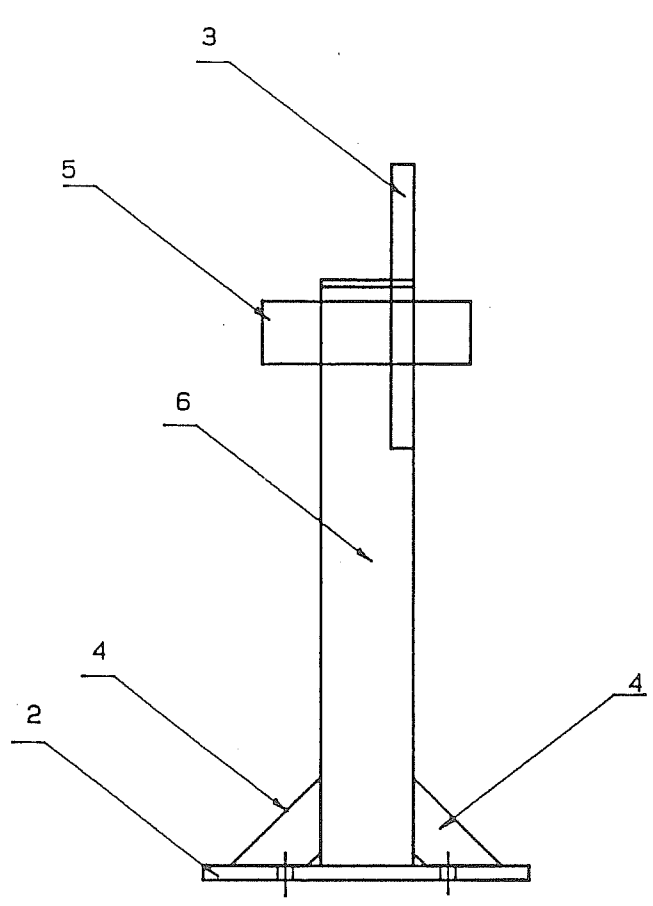
NR	QTY	PART, MATERIAL	DIMENSIONS	PART NO.
GRIZZLY ENGINEERING PTY				
TITLE: WHEEL LIFT ASSY.LEFT.152x102.				
PART NO gjga0001				
SCALE 1: 6			DATE: 23.8.89	DRG NO.GJGA0001

"S" SERIES F24-28 PLATE

WHEEL LIFT ASSEMBLY LEFT - GJFA001

<u>NO.</u>	<u>PART NO.</u>	<u>DESCRIPTION</u>
1	CFEFE001	END CAP 8mm
2	CGEFH000	AXLE BASE PLATE 16mm
3	CGEFM001	WHEEL ASSEMBLY LIFTING ARM
4	CJAZG000	GUSSET
5	MDDJA230	ROUND
6	MGKKA643A	WHEEL ASSEMBLY LEG

NOTE: GJFA0001 WHEEL LIFT ASSEMBLY LEFT IS A MIRROR IMAGE OF
GJFA0002 WHEEL LIFT ASSEMBLY RIGHT



NR	QTY	PART, MATERIAL	DIMENSIONS	PART NO.
GRIZZLY ENGINEERING PTY				
TITLE:		WHEEL LIFT ASSY. S.H.S 102 X 102.		
PART NO		GJFA0001		
SCALE	1: 6	DATE:	23.8.89	DRG NO. GJFA0001

"S" SERIES

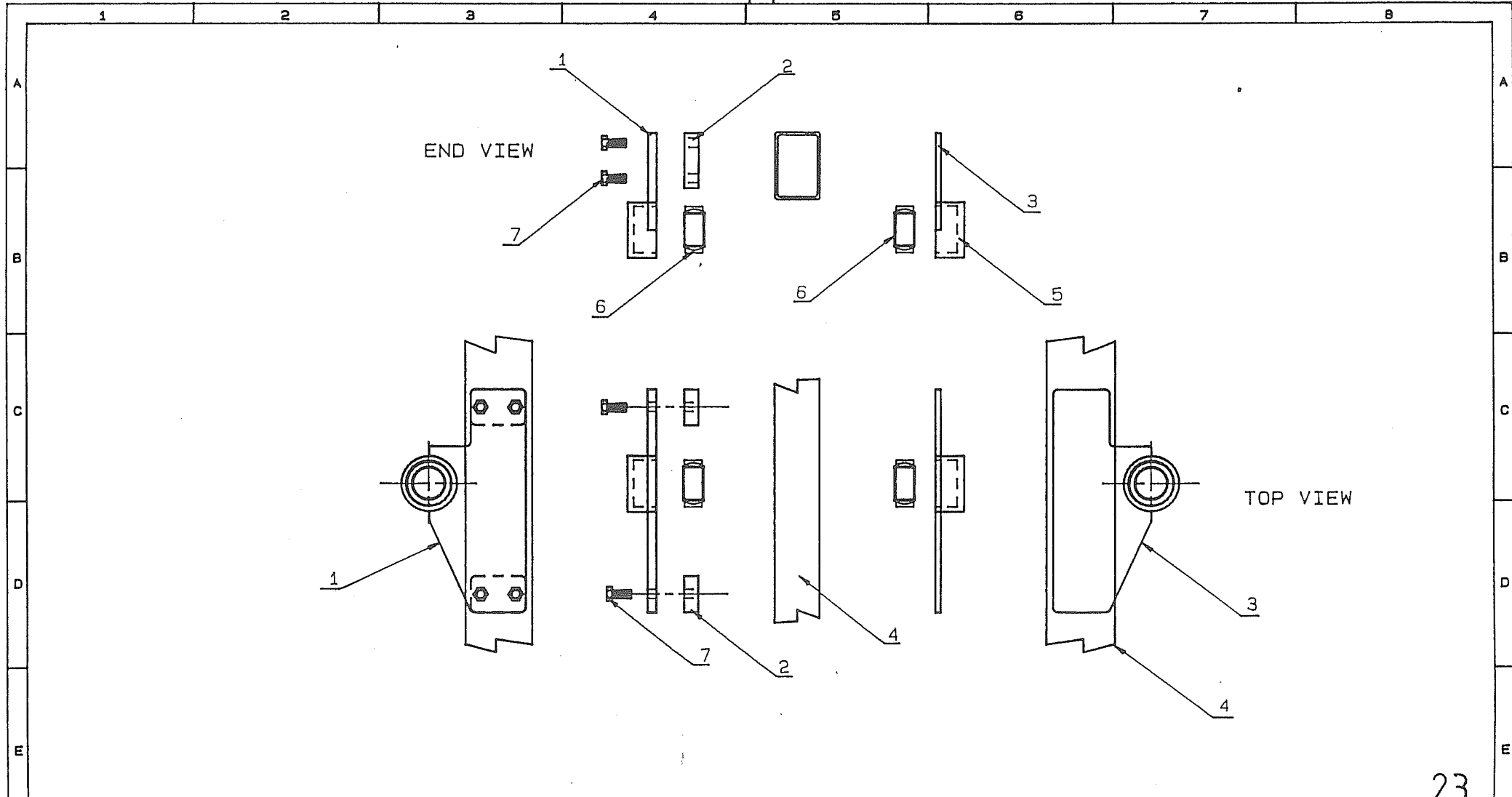
WHEEL LIFT SIDE PLATE ASSEMBLY

<u>NO.</u>	<u>PART NO.</u>	<u>DESCRIPTION</u>	<u>QTY.</u>
1	GJHB0000R	W/A SIDE PLATE ASSY INNER (RIGHT)	1
2	CCEFP000	W/A SPACER BLOCKS	2
3	GJFB0003R	W/A SIDE PLATE ASSY OUTER (RIGHT)	1
4	MHHND600	MAIN FRAME BEEM	1
5	MFWYA065A	BALL BUSH HOUSING	2
6	BDMZA000	BALL BUSHING	2
7	FABJA045	BOLT M20	4

NOTE: GJHB0000L - W/A SIDE PLATE ASSY INNER LEFT.

GJFB0003L - W/A SIDE PLATE ASSY OUTER LEFT.

LEFT AND RIGHT SPECIFY WHICH SIDE OF THE MACHINE THE
WHEEL ASSEMBLY IS LOCATED.

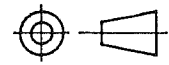


23

ALL DIMENSIONS IN MILLIMETERS.
TOLERANCES

LINEAR ± 0.5

ANGULAR ± 0.5



GRIZZLY ENGINEERING.

DRAWN	G. BAILEY
CHECKED	-----
APPROVED	-----

TITLE: WHEEL ASSY. SIDE PLATE BEARING ASSY.

DATE	27-6-90
------	---------

SCALE	NO SCALE	DRAWING NO.	SIDEASSY	A3
-------	----------	-------------	----------	----

ISSUE	DATE	ZONE	CHANGE	BY	CKD
AMENDMENTS.					
1	2	3	AS1100	4	

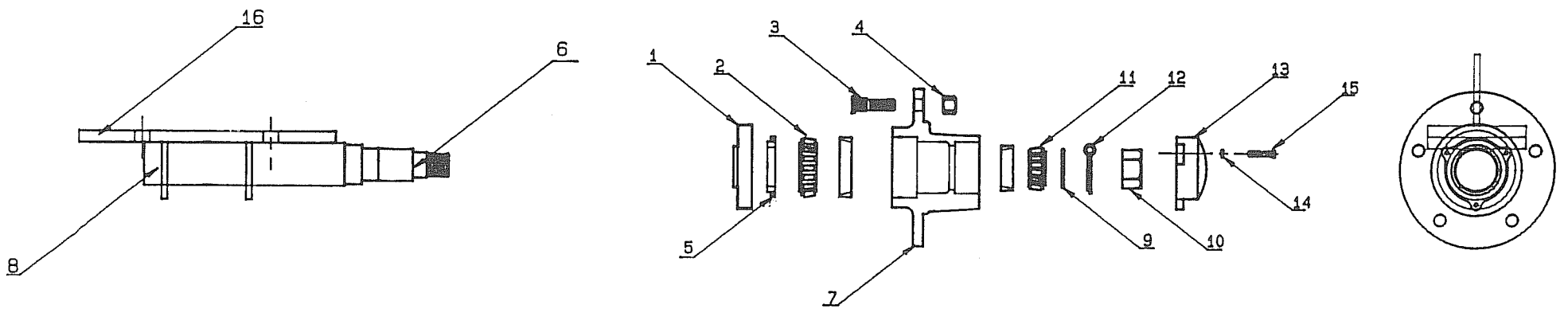
"S" SERIES FW48 PLATE
HUB & STUB ASSEMBLY - WMJAA425

<u>NO.</u>	<u>PART NO.</u>	<u>DESCRIPTION</u>	<u>QTY.</u>
1	BNJAA000	DUST COVER	1
2	BBGAA000	BEARING FOR H60 HUB LARGE	1
3	FDBHA000	STUD WHEEL 5/8 X 1 7/8	5
4	FFFHA000	NUT WHEEL 5/8	5
5	BNJBA000	SEAL FOR H60 HUB	1
6	WAJAA425	H60 STUB AXLE BARE 9 X 16 SINGLE	1
7	WJJAA000	HUB H60 BRG KIT FITTED	1
8	CAEGE001	GUSSET H60 AXLE	2
9	FMA'SAK00	FLAT WASHER	1
10	FFCPA000	NUT SLOTTED	1
11	BCJ'AA000	BEARING FOR H60 HUB SMALL	1
12	FKCEA063	SPLIT PIN	1
13	WKJAA000	CAP FOR H60 HUB	1
14	FMBDCB00	WASHER SPRING 6MM	3
15	FABDA016	BOLT M6	3
16	CGEFH000	AXLE BASE PLATE 16MM	1

NOTE: - WBJAA425 H60 STUB AXLE ASSY CONSISTS OF ITEMS 6, 8 & 16.

- BAJAA000 H60 BEARING KIT CONSISTS OF ITEMS 2, 5, 11 & 12.

* MACHINES BUILT PRE 1987 MAY HAVE H40 OR H50 HUBS & STUBS FITTED. REFER TO MASTER FILE FOR MORE INFORMATION.



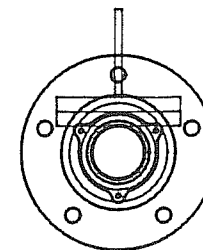
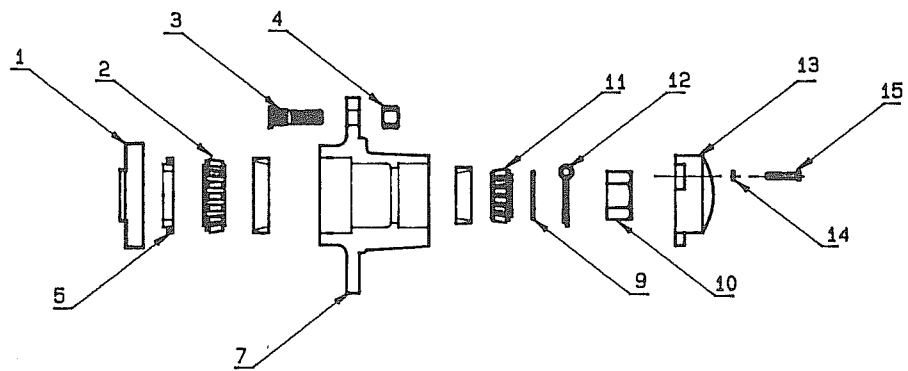
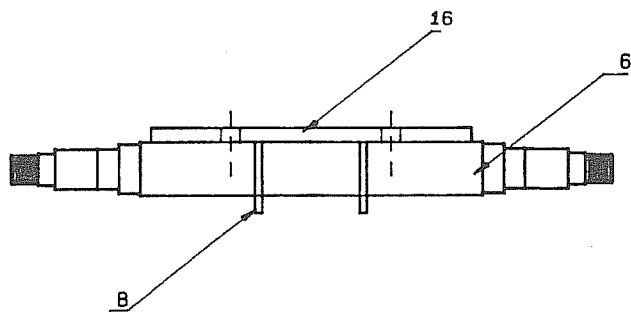
NR	QTY	PART, MATERIAL	DIMENSIONS	PART NO.
GRIZZLY ENGINEERING PTY				
TITLE: HUB & STUB ASSY. 9.00 SINGLE				
PART NO WMJAA425		WBJAA425		
SCALE	1: 6	DATE: 24.8.89	DRG NO.WMJAA425	

"S" SERIES FW48 PLATE

HUB & STUB ASSEMBLY - WMJAA675

<u>NO.</u>	<u>PART NO.</u>	<u>DESCRIPTION</u>	<u>QTY.</u>
1	BNJAA000	DUST COVER	1
2	BBGAA000	BEARING FOR H60 HUB LARGE	1
3	FDBHA000	STUD WHEEL 5/8 X 1 7/8	5
4	FFFHA000	NUT WHEEL 5/8	5
5	BNJBA000	SEAL FOR H60 HUB	1
7	WJJAA000	HUB H60 BRG KIT FITTED	1
8	CAEGE001	GUSSET H60 AXLE	2
9	FMASAK00	FLAT WASHER	1
10	FFCPA000	NUT SLOTTED	1
11	BCJAA000	BEARING FOR H60 HUB SMALL	1
12	FKCEA063	SPLIT PIN	1
13	WKJAA000	CAP FOR H60 HUB	1
14	FMBDCB00	WASHER SPRING 6MM	3
15	FABDA016	BOLT M6	3
16	CGEFH000	AXLE BASE PLATE 16MM	1

NOTE: - BAJAA000 H60 BEARING KIT CONSISTS OF ITEMS 2, 5, 11 & 12.
- MACHINES BUILT PRE 1987 MAY HAVE H40 OR H50 HUB AND STUBS FITTED. REFER MASTER FILE FOR MORE INFORMATION.

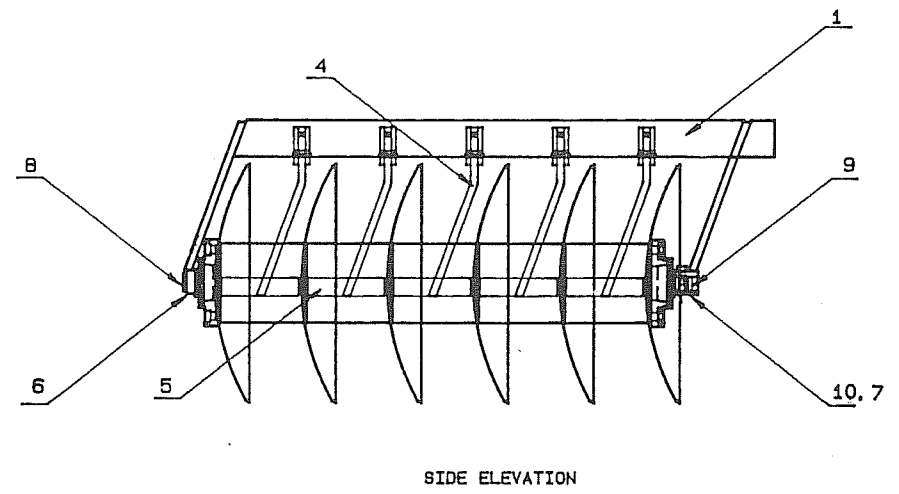
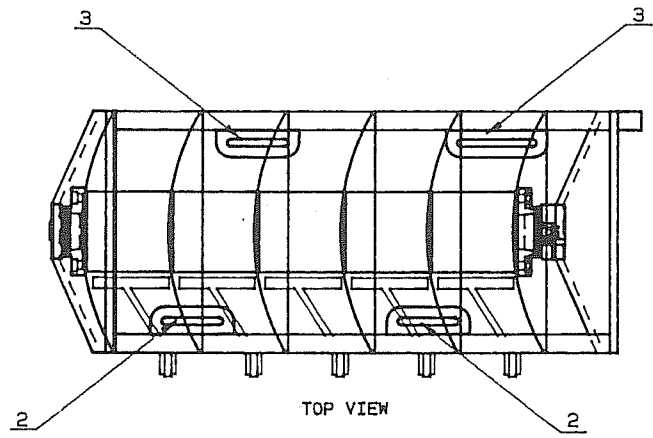


NR	QTY	PART, MATERIAL	DIMENSIONS	PART NO.
GRIZZLY ENGINEERING PTY				
TITLE: HUB & STUB ASSY. 9.00 DUELS				
PART NO WMJAA675, WBJBA67				
SCALE 1: 6		DATE: 24.8.89		DRG NO. WMJAA675

"S" SERIES FW48 PLATE
GANG FRAME NO.1 ASSEMBLY

<u>NO.</u>	<u>PART NO.</u>	<u>DESCRIPTION</u>
1	S48G1	GANG FRAME NO.1
2	LADJA150	SLOT 150MM
3	LADJA200	SLOT 200MM
4	* GFFAA210	SCRAPER ASSEMBLY LEFT
5	MCCHA210	SCRAPER PAD
6	FABGA065A	BOLT M12 WITH HOLE
7	FFBHA000	NYLOC NUT M16
8	CBAFM000	AXLE CARRIER (KISSING)
9	GEGEA000	AXLE CARRIER RIGHT
10	FABHA085	BOLT M16

NOTE * CHANGE HAS BEEN MADE. REFER PAGE 45.

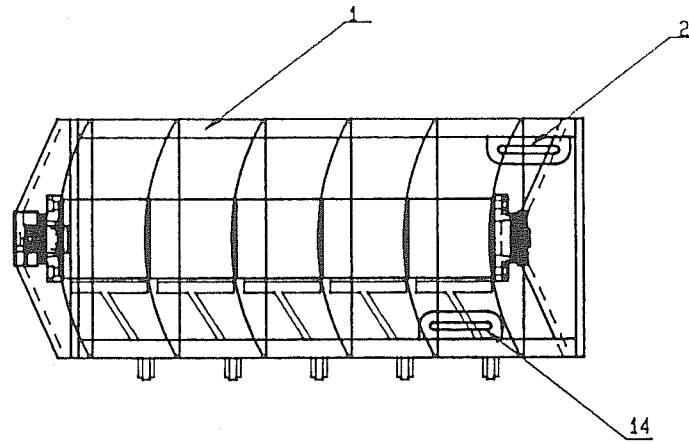


GRIZZLY ENGINEERING PTY. LTD			
TITLE: GANG ASSY "S" 48 NO.1			
PART NO.			
SCALE:	1: 14.8	DATE:	6.9.89
DRG NO:		S48G1	

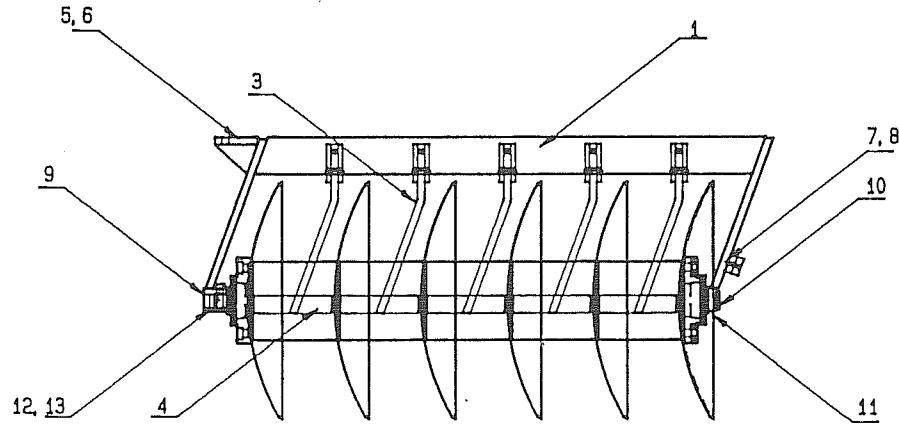
"S" SERIES FW48 PLATE
GANG FRAME NO.2 ASSEMBLY

<u>NO.</u>	<u>PART NO.</u>	<u>DESCRIPTION</u>
1	S48G2	GANG FRAME NO.2
2	LADJA150	SLOT 150MM
3	* GFFAA210	SCRAPER ASSEMBLY LEFT
4	MCCHA210	SCRAPER PAD
5	MAHMA120	PIVOT PLATE
6	CJAZE005	PIVOT PLATE GUSSET
7	GNABG000	SPACER BLOCK ASSEMBLY
8	FBBFA035	BOLT CS'K KD M10 X 35
9	GEGDA000	AXLE CARRIER SINGLE LEFT
10	CBAFM000	AXLE CARRIER (KISSING)
11	FABGA065A	BOLT M12 WITH HOLE
12	FABHA085	BOLT M16
13	FFBHA000	NYLOC NUT M16
14	LADJA100	SLOT 100MM

NOTE * CHANGE HAS BEEN MADE. REFER PAGE 45.



TOP VIEW



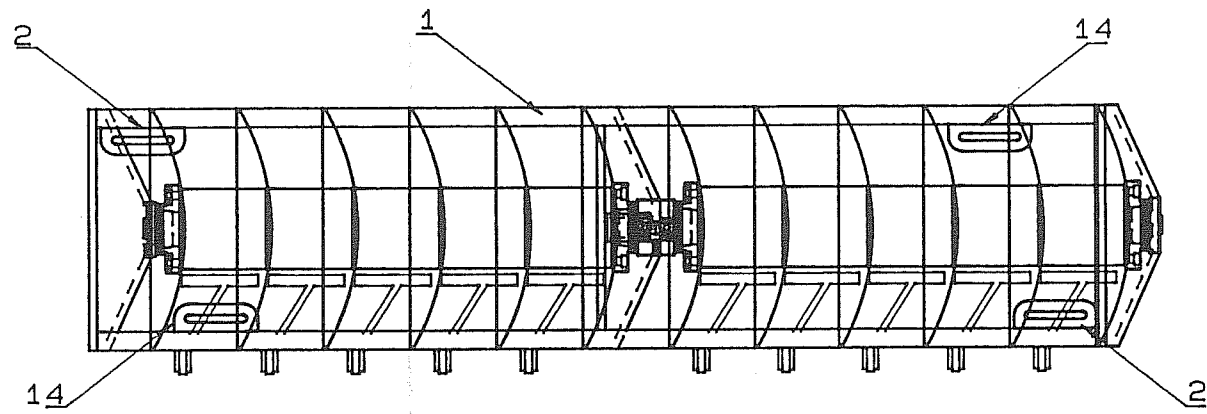
BACK ELEVATION

GRIZZLY ENGINEERING PTY. LTD		
TITLE: GANG ASSY "S" 48-64 NO.2		
PART NO.		
SCALE: 1: 14.8	DATE: 4.9.89	DRG NO: S4862

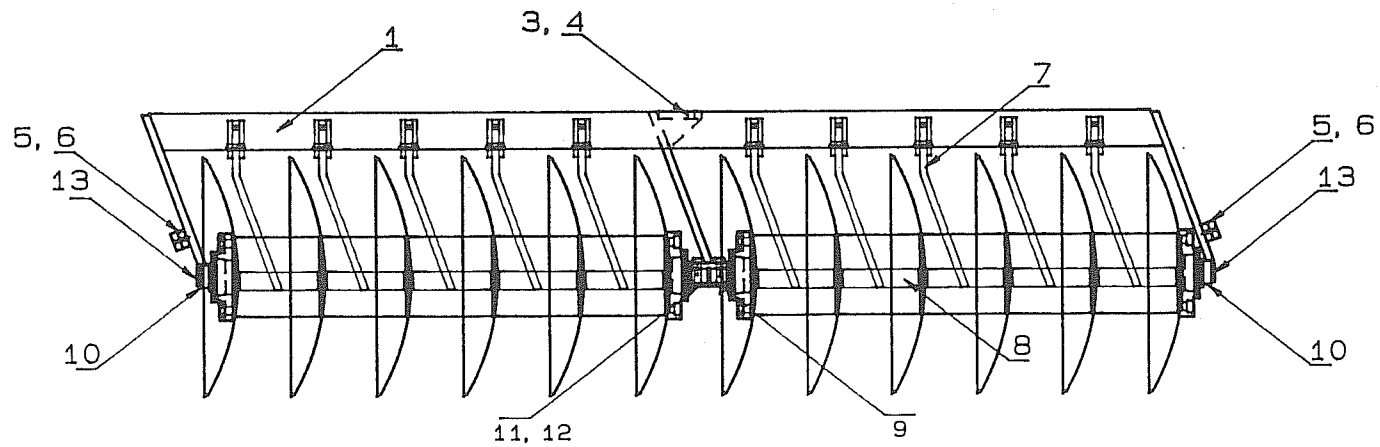
" S" SERIES FW48 PLATE
GANG FRAME NO.4 ASSEMBLY

<u>NO.</u>	<u>PART NO.</u>	<u>DESCRIPTION</u>
1	S48G4	GANG FRAME
2	LADJA150	SLOT 150MM
3	MAHMA120	PIVOT PLATE
4	CJAZE005	PIVOT PLATE GUSSET
5	GNABG000	SPACER BLOCK ASSEMBLY
6	FBBFA035	BOLT CS'K HD M10 X 35
7	* GFFBA210	SCRAPER ASSEMBLY RIGHT
8	MCCHA210	SCRAPER PAD
9	GEGBA000	AXLE CARRIER (DOUBLE)
10	FABGA065A	BOLT M12 WITH HOLE
11	FABHA085	BOLT M16
12	FFBHA000	NYLOC NUT M16
13	CBAFM000	AXLE CARRIER (KISSING)
14	LADJA100	SLOT 100MM

NOTE * CHANGE HAS BEEN MADE. REFER PAGE 45.



TOP VIEW



BACK ELEVATION

GRIZZLY ENGINEERING PTY. LTD			
TITLE: GANG ASSY "S" 48-64 NO. 4			
PART NO.			
SCALE: 1: 14.8	DATE: 5.9.89	DRG NO: S4864	

GANG AXLES USED

NO. OF DISC	PART NO.	
	2 HOLES	1 HOLES
3	MJAMA707A	MJAMA688
4	MJAMA944A	MJAMA925A
5	MJAMB181A	MJAMB162A
6	MJAMB418A	MJAMB399A
7	MJAMB655A	MJAMB636A
8	MJAMB892A	MJAMB873

"S" SERIES
GANG ASSEMBLY

<u>NO.</u>	<u>PART NO.</u>	<u>DESCRIPTION</u>
1	FAAJB260	6 DISC GANG BOLT M20
2	GEGDA000	AXLE CARRIER SINGLE LEFT
3	MGGFA004	4MM SPACER
4	FHCPA035	GANG SPRING
5	BNTAA001	DUST COVER SERIES II
6	BPBBA000	GANG BEARING 38 X 100 SPHERICAL
7	BGB100B1	LEAD BEARING HOUSING SERIES II
8	BHB100B1	THRUST BEARING HOUSING SERIES II
9	D26DSB26	DISC
10	MEGRA230	230MM SPOOL
11	CBAFM000	AXLE CARRIER KISSING

GANG BOLTS USED

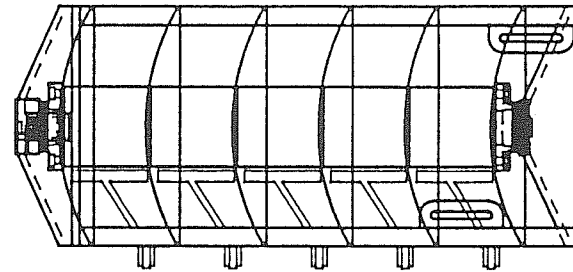
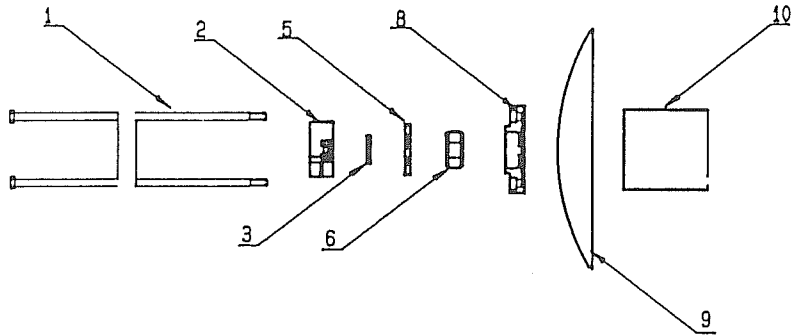
NO. OF DISC	PART NO. M20
3	FAAJA550
4	FAAJA790
5	FAAJB020
6	FAAJB260
7	FAAJB490
8	FAAJB730

NOTE: - SERIES I BEARING HOUSINGS AND DUST COVER LISTED BELOW.

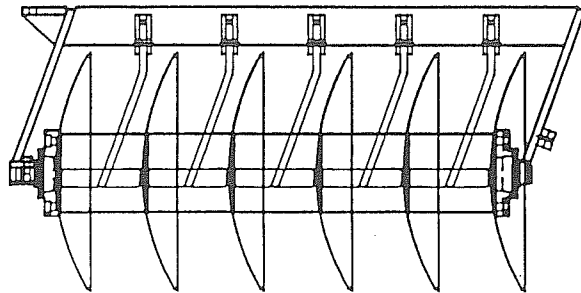
- BGB100B0 LEAD BEARING HOUSING, SERIES I
- BHB100B0 THRUST BEARING HOUSING, SERIES I
- BNTAA000 DUST COVER WITH NEOPRENE INSERT, SERIES I

- FOR MORE INFORMATION ON BEARING HOUSING ASSEMBLIES REFER TO THE MASTER FILE

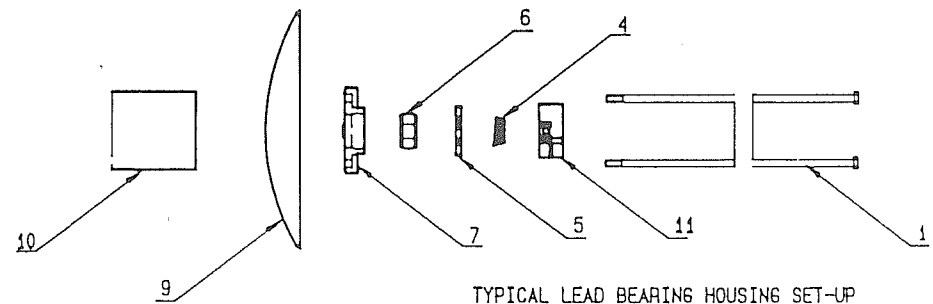
TYPICAL THRUST BEARING HOUSING SET-UP
ON "S" SERIES MACHINES.



TOP VIEW



BACK ELEVATION



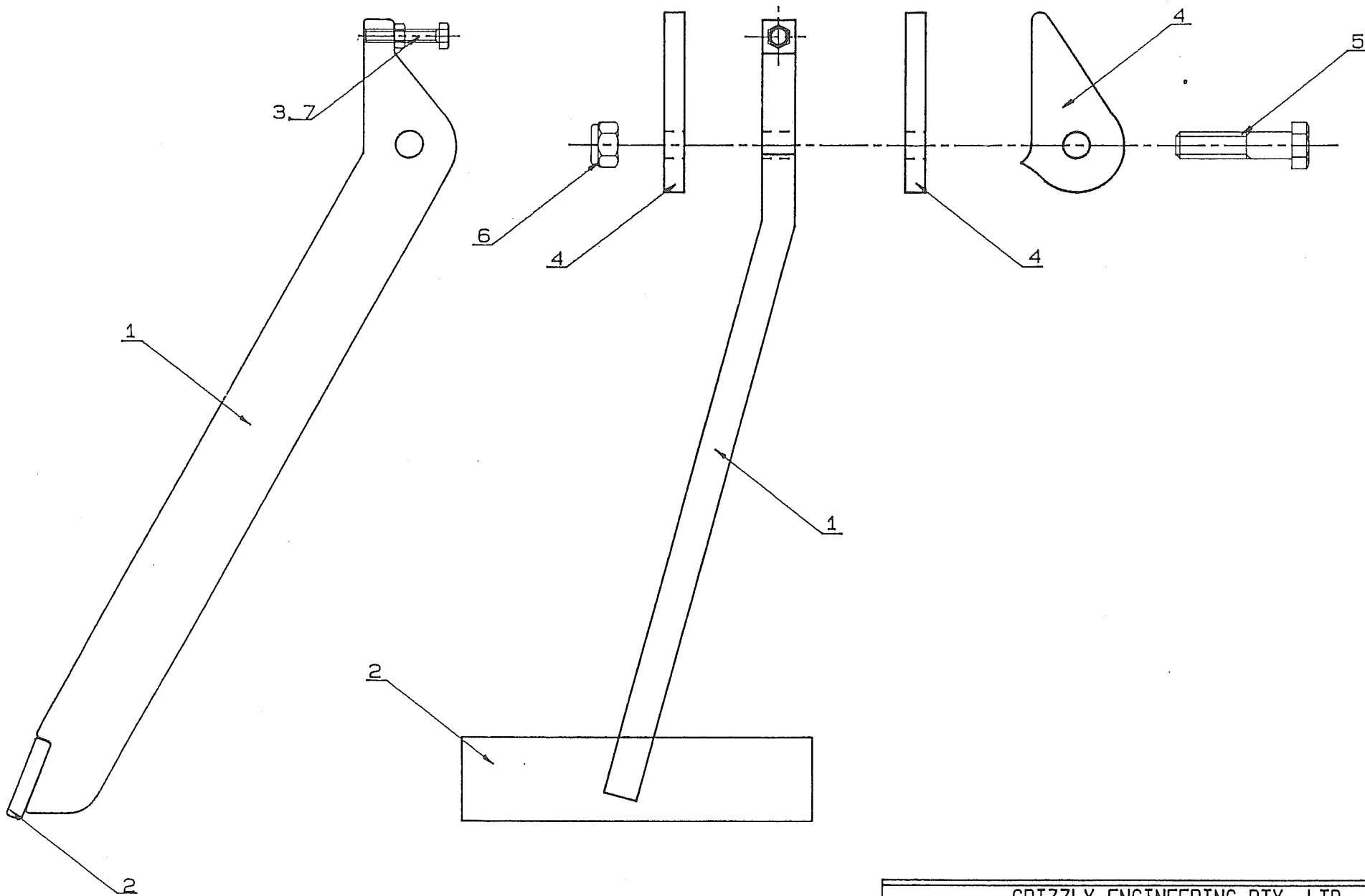
TYPICAL LEAD BEARING HOUSING SET-UP
ON "S" SERIES MACHINE.

GRIZZLY ENGINEERING PTY. LTD			
TITLE: GANG ASSY "S" 48-64 NO.2			
PART NO.			
SCALE: 1:14.8	DATE: 4.9.89	DRG NO: S48G2	

"S" SERIES FW48 PLATE
SCRAPER ASSEMBLY LEFT GFFAA210

<u>NO.</u>		<u>PART NO.</u>	<u>DESCRIPTION</u>
1	*	GFFAA210	SCRAPER ASSEMBLY LEFT
2		MCCHA210	SCRAPER PAD
3		FEBEA035	SET SCREW M8
4		CBAGG000	SCRAPER LUG
5		FABHA070	BOLT M16
6		FFBHA000	NYLOC NUT M16
7		FFAEA000	BLACK NUT M8

NOTE: GFFBA210 - SCRAPER ASSEMBLY RIGHT.
* CHANGE HAS BEEN MADE. REFER PAGE 45.



GRIZZLY ENGINEERING PTY. LTD			
TITLE:		PLATE 20mm "S" SCRAPER	
PART NO.			
SCALE:	1: 2.31	DATE:	26.10.89
		DRG NO:	C6FFJ000

"S" SERIES FW48 PLATE

"S" FOLDING PULL OPTIONS (SPULL)

<u>NO.</u>	<u>PART NO.</u>	<u>DESCRIPTION</u>
1	GDFE0000	LEVELING ROD
2	GDFE0001	LOCK UP ASSEMBLY - (LEVELING ROD)
3	GDFG0000	HYDRAULIC PITCH CONTROL
4	GDFE0002	LOCK UP ASSEMBLY - (HYD. PITCH CONTROL)
5	GDFJA000	HYDRAULIC ACCUMULATOR
6	* GKFA0001	SWIVEL ASSEMBLY "S" M24 BOLTS
7	* CBBFJ000	TOP LEVEL LUG

NOTE: - GKFA0000 SWIVEL ASSEMBLY TO SUIT MACHINES PRE SERIAL NO. 487 (M20 BOLTS).

- CBBFJ001 TOP LEVEL LUG TO SUIT MACHINES PRE SERIAL NO. 487 (M20 BOLTS).

"S" SERIES

HYDRAULIC PITCH CONTROL - GDFG0000

<u>NO.</u>	<u>PART NO.</u>	<u>DESCRIPTION</u>	<u>QTY.</u>
1	FABKA050	BOLT M24	2
2	FFDPA000	HALF NUT 1-1/4 BSW	2
3	FFGPA040	SPRING ASSEMBLY NUT 40MM	1
4	FFGPA090	SPRING ASSEMBLY NUT 90MM	1
5	* FHRTA270	SPRING 270	2
6	* GKFA0001	"S" SWIVEL ASSEMBLY 24MM BOLTS	1
7	FPJPA760	THREADED BARE 760MM	1
8	HHFEZ000	ADAPTOR (CROSS RAM)	1
9	HYC250/06	HYD CYL 2.5" X 6" CROSS	1
10	FGBKA135	PIN 1"	1
11	FMCMG000	F/WASHERS	4

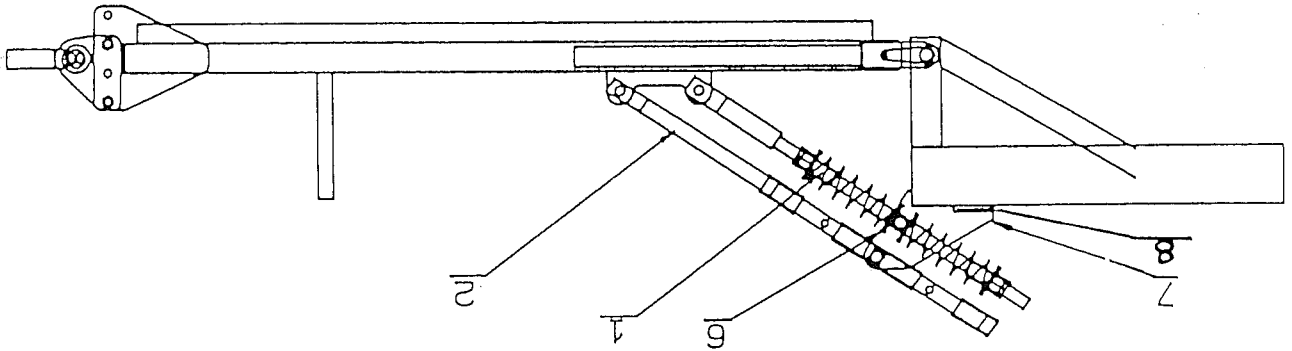
LEVEL ROD ASSEMBLY

1	FFDPA000	HALF NUT 1-1/4 BSW	2
2	FFGPA040	SPRING NUT ASSY 40MM	1
3	FFGPA090	SPRING NUT ASSY 90MM	1
4	* FHRTA270	SPRING 270	2
5	FPJPA760	THREADED BAR 760MM	1
6	MAEHA100B	FLAT 50 X 10	2
7	MJAPA270A	SQUARE 50 X 50	1
8	* GKFA0001	"S" SWIVEL ASSEMBLY 24MM BOLTS	1
9	FABKA050	BOLT M24	2
10	FGBKA135	PIN 1"	1
11	FMCMG000	F/WASHER	4

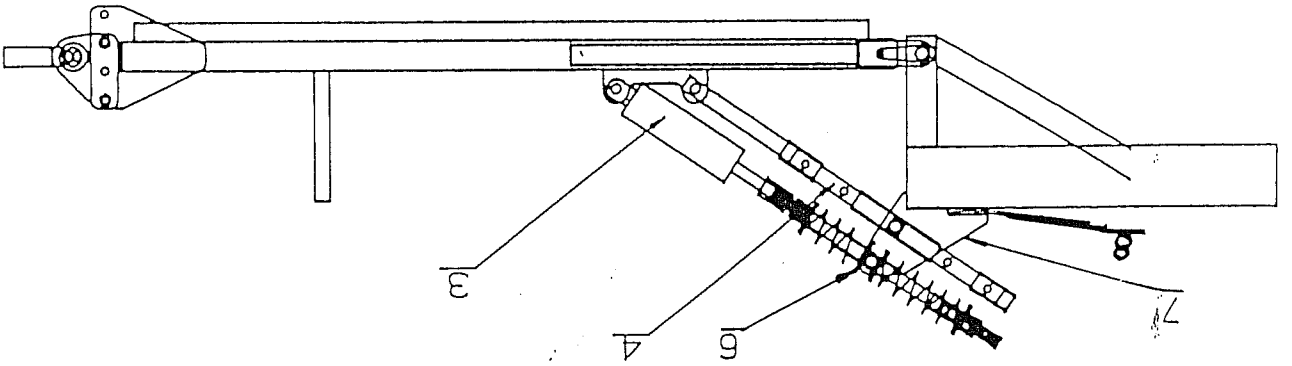
NOTE: * CHANGE HAS BEEN MADE

GRIZZLY ENGINEERING PTY. LTD
 TITLE: "S" FOLDING PULL
 PART NO.
 SCALE: 1:14
 DATE: 20.9.89
 DRG NO: SFPULL

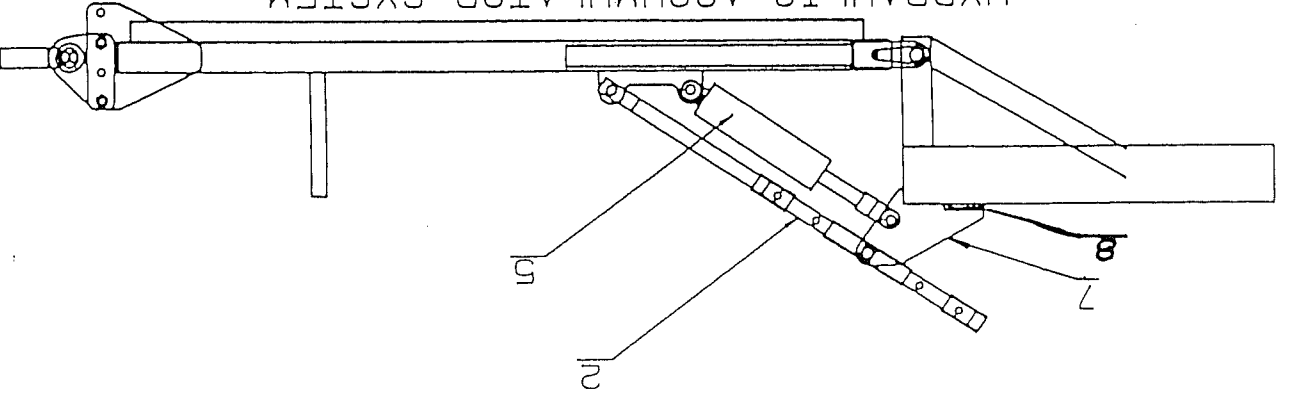
MANUAL PITCH CONTROL
 WITH LOCK-UP



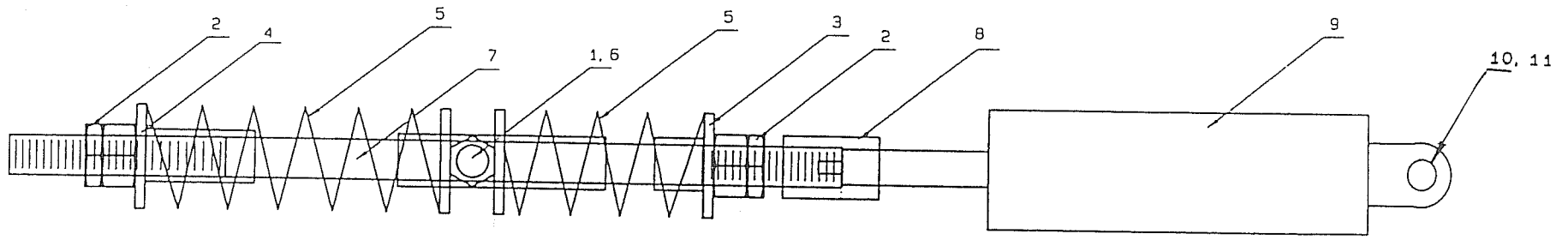
HYDRAULIC PITCH CONTROL
 WITH LOCK-UP



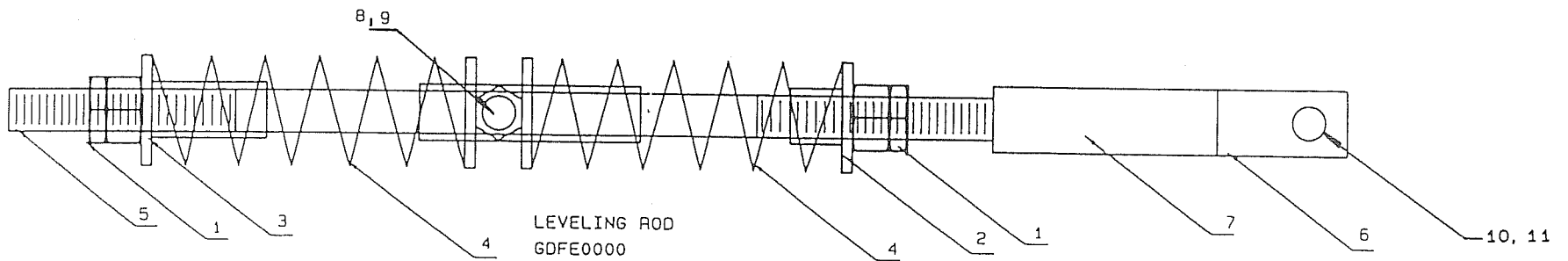
HYDRAULIC ACCUMULATOR SYSTEM



40



HYD PITCH CONTROL OPTN.
GDFG0000

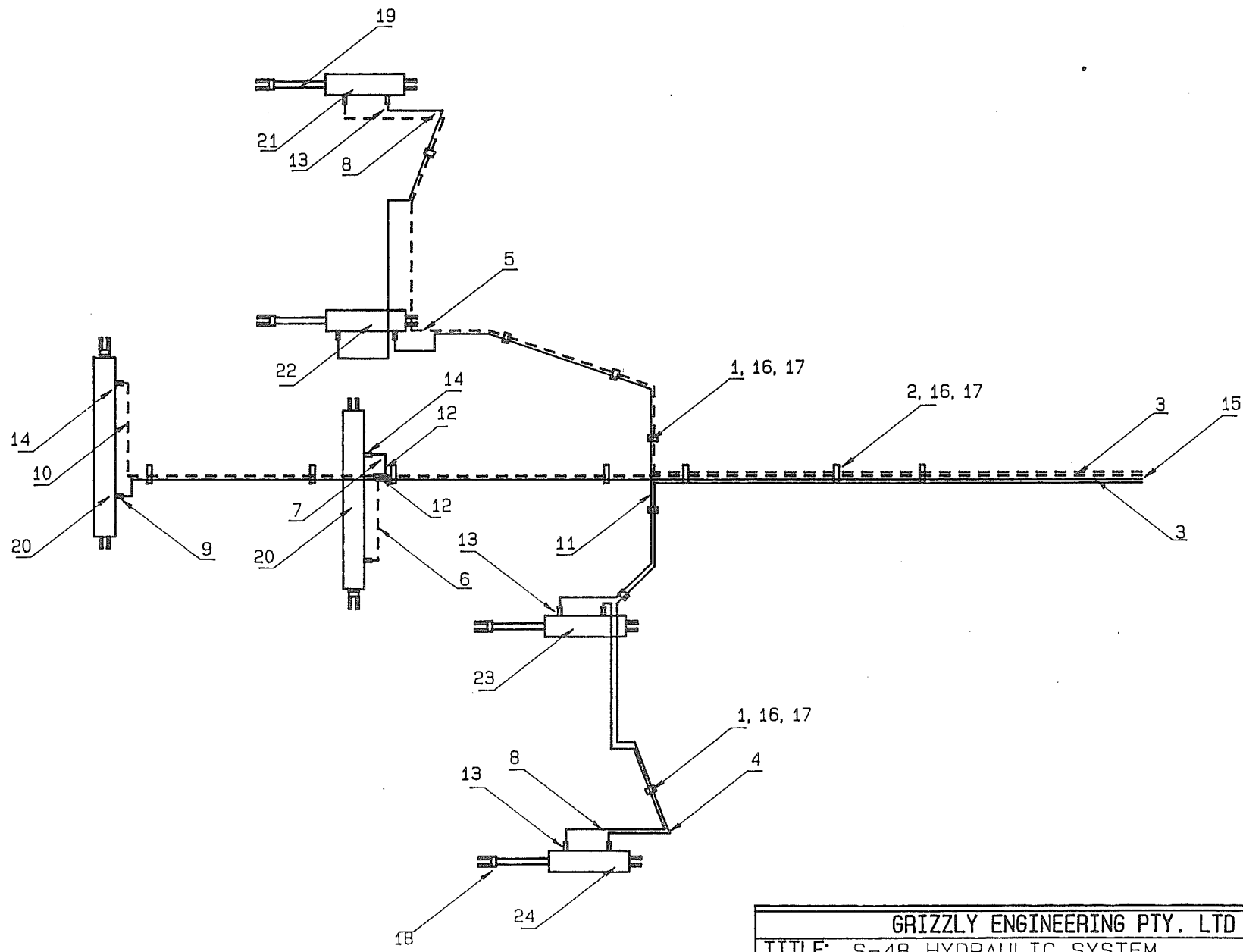


LEVELING ROD
GDFE0000

NR	QTY	PART, MATERIAL	DIMENSIONS	PART NO.
GRIZZLY ENGINEERING PTY				
TITLE: LEVELING ROD				
PART NO GDFE0000				
SCALE 1: 3		DATE: 19.04.89		DRG NO. GDFE0000

"S" SERIES FW48 PLATE
HYDRAULIC KIT - HFGA6048

<u>NO.</u>	<u>PART NO.</u>	<u>DESCRIPTION</u>	<u>QTY.</u>
1	FABEA045	BOLT M8 X 45 GRADE 8.8	11
2	FABEA080	BOLT M8 X 80 GRADE 8.8	2
3	HGCAG200	HOSE (6,200) HHAKBU07 HHAKMU07	2
4	HGCAH200	HOSE (7,200) HHAKBU07 HHAKMU07	1
5	HGCAJ300	HOSE (8,300) HHAKMU07 HHAKMU07	1
6	HGCCA500	HOSE (500) HHAKBU07 BOTH ENDS	1
7	HGCCA800	HOSE (800) HHAKBU07 BOTH ENDS	1
8	HGCCB900	HOSE (1,900) HHAKBU07 BOTH ENDS	2
9	HGCCC100	HOSE (2,100) HHAKBU07 BOTH ENDS	1
10	HGCCC400	HOSE (2,400) HHAKBU07 BOTH ENDS	1
11	HGCCD600	HOSE (3,600) HHAKBU07 BOTH ENDS	1
12	HHAAAA77	FITTING TEE M/M/MX 3/4"	2
13	HHABAM07	FITTING U.N O RING J,I,C,M,N	10
14	HHABAMO7A	FITTING 90° ELBOW/RESTRICTOR	2
15	HHD MNW07	QUICK RELEASE COUPLING 3/4"	4
16	HJBCA000	CLAMP SHELL 3/4-3/4	34
17	HJBFA000	TOP PLATE FOR 3/4 CLAMP	16
18	HMCBA000	DEPTH STOP P.T.E.	1
19	HRDBA285	TRANSPORT BLOCK (285MM) P.T.E.	2
20	HYP400/36	HYD. CYL. 4" X 36"	2
21	HZP350/12	HYDRAULIC CYL. 3.50" X 12"	1
22	HZP375/12	HYDRAULIC CYL. 3.75" X 12"	1
23	HZP400/12	HYDRAULIC CYL. 4" X 12"	1
24	HZP425/12	HYDRAULIC CYL. 4.25" X 12"	1
25	HHAKBU07	FITTING J.I.C.F TO HOSE STRAIGHT	9
26	HHAKMU07	FITTING UN O RING M TO HOSE	3
27	HHCPUA07	COVER 3/8 HOSE NO /SKIVE	9



43

GRIZZLY ENGINEERING PTY. LTD		
TITLE: S-48 HYDRAULIC SYSTEM.		
PART NO.		
SCALE: 1: 25.03	DATE: 29-9-89	DRG NO: S48HSPC

CHANGES - "S" SERIES FW48 PLATE

<u>REFERENCE</u>		<u>OLD</u>	<u>NEW</u>	<u>DATE OF</u>	<u>SERIAL NO.</u>	<u>NOTES</u>
<u>PAGE</u>	<u>ITEM</u>	<u>PART NO.</u>	<u>PART NO.</u>	<u>CHANGE</u>	<u>OF CHANGE</u>	
14	11	FGBUA380	FGBUA125	1988		FROM 50 X 380mm TO 50 X 125mm
28,30,36	4,3,1	GFFAB210	GFFAA210	1986		LENGHTENED FROM 410mm TO 460mm
32,36	7,N	GFFBB210	GFFBA210	1986		LENGHTENED FROM 410mm TO 460mm