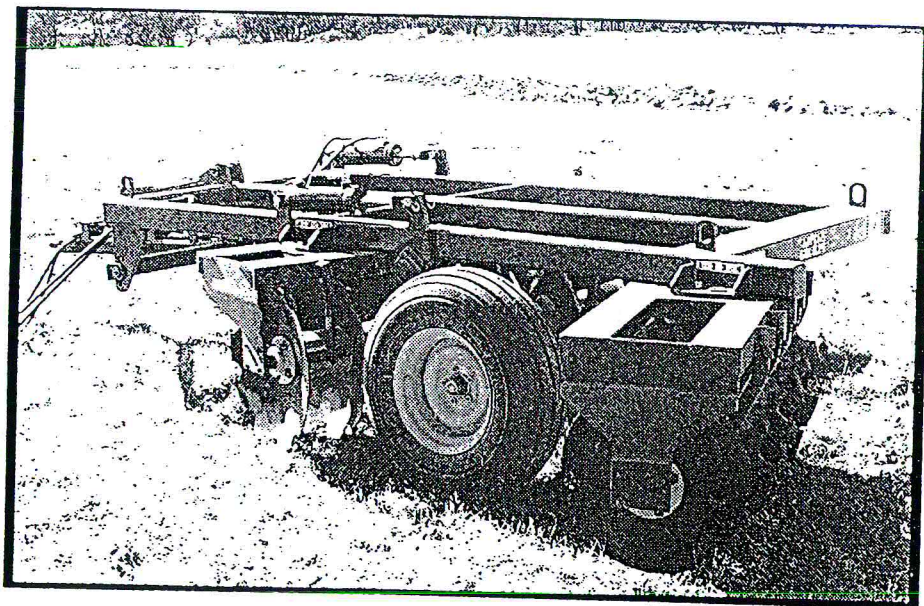


GRIZZLY

SPARE PARTS MANUAL

LITTLE GRUMPY

SERIES I



LITTLE GRUMPY SERIES I

SPECIFICATIONS

	<u>LG20</u>	<u>LG24</u>
WORKING WIDTH	2.3M (7'6")	2.7M (9'0")
TRANSPORT WIDTH	2.8M (9'6")	3.3M (11'0")
TYRES	775X14 6PLY	775X14 6 PLY
OPTIONAL	10X14 MULTI-RIB	10X14 MULTI-RIB

<u>GANG AXLE USED</u>		<u>GANG BOLT USED</u>	
<u>NO. OF DISCS</u>	<u>PART NO.</u>	<u>NO. OF DISCS</u>	<u>PART NO. M16</u>
5	MJBHB170A	5	FAAHB000
6	MJBHB400A	6	FAAHB240
7	MJBHB632A	7	FAAHB470

OPTION

- GDEG0003 - HYDRAULIC PITCH CONTROL
- GDCHA000 - CONCRETE BLOCK (WEIGHTS)

UPDATE KITS

- GMCA0001 - LITTLE GRUMPY WHEEL ASSEMBLY UPDATE KIT (TWIN RAMS)
- GMCB0000 - LITTLE GRUMPY SERIES I WHEEL ASSEMBLY REPAIR KITS (TOP LINK)
- CMCA0000 - LITTLE GRUMPY WHEEL ASSEMBLY PIVOT REPAIR KIT
- CMCA0002 - HYDRAULIC PITCH CONTROL HARDWARE (NO RAM)

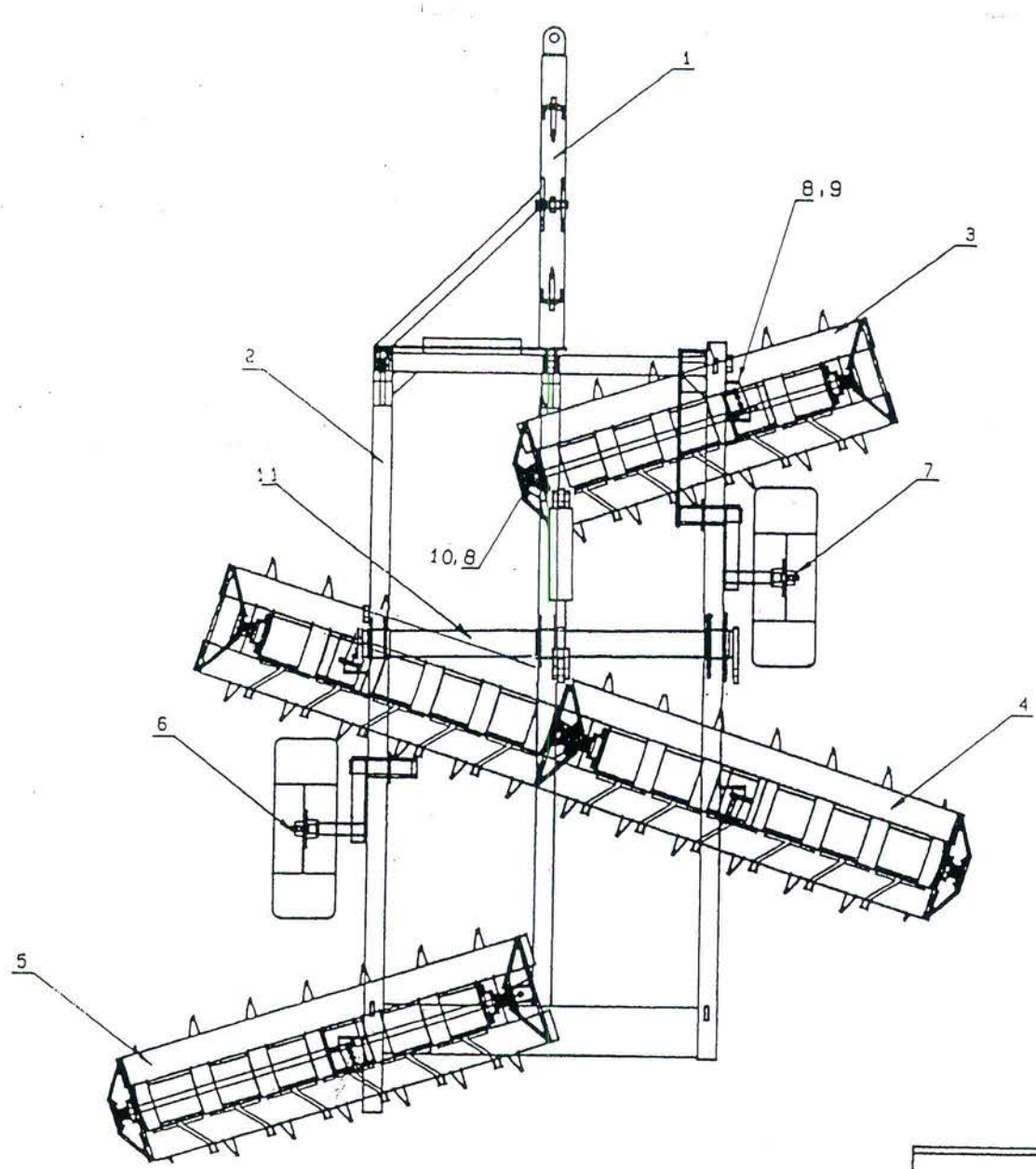
LITTLE GRUMPY SERIES I

CONTENTS

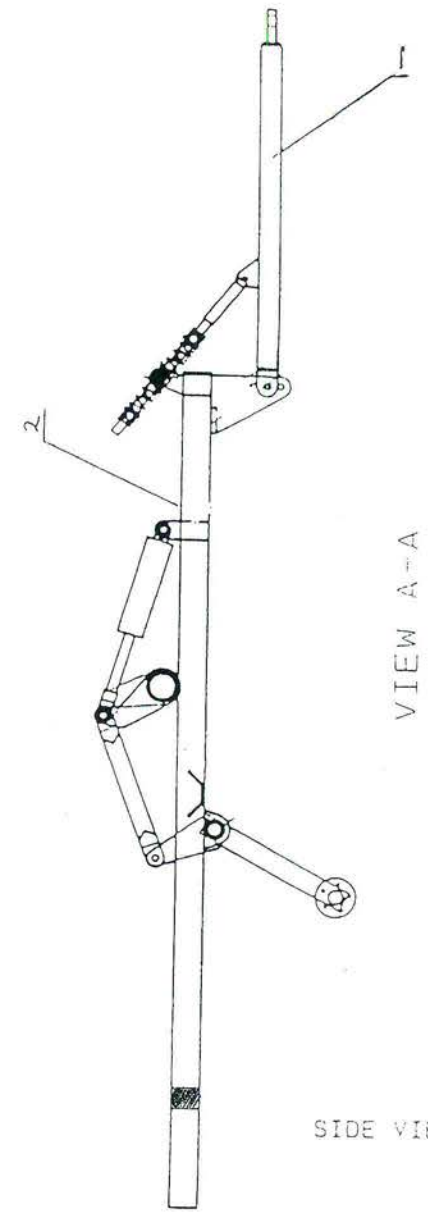
<u>NO.</u>	<u>PART NO.</u>	<u>DESCRIPTION</u>	<u>PAGE</u>
1		SPECIFICATIONS - GANG AXLES - GANG BOLTS - OPTIONS - UPDATE KITS	1
2	GCC20-24	ASSEMBLY KIT PARTS LIST	2
3	GCC20-24	ASSEMBLY KIT	3
4	GCC024	MAIN FRAME PARTS LIST	4
5	GCC024	MAIN FRAME	5
6	GHC00000	PULL ASSEMBLY PARTS LIST	6
7	GHC00000	PULL ASSEMBLY	7
8	GJCA0003	WHEEL LIFT ASSEMBLY PARTS LIST	8
9	GJCA0003	WHEEL LIFT ASSEMBLY	9
10	GJCA0002	WHEEL ASSEMBLY PARTS LIST	10
11	GJCA0002	WHEEL ASSEMBLY	11
12	WMCAA000	H30 HUB & STUB ASSY PARTS LIST	12
13	WMCAA000	H30 HUB & STUB ASSEMBLY	13
14	GJCA0000	WHEEL LIFT LINK ASSY PARTS LIST	14
15	GJCA0000	WHEEL LIFT LINK ASSEMBLY	15
16	GANG NO.1	GANG NO.1 ASSEMBLY PARTS LIST	16
17	GANG NO.1	GANG NO.1 ASSEMBLY	17
18	GANG NO.2	GANG NO.2 ASSEMBLY PARTS LIST	18
19	GANG NO.2	GANG NO.2 ASSEMBLY	19
20	GANG NO.3	GANG NO.3 ASSEMBLY PARTS LIST	20
21	GANG NO.3	GANG NO.3 ASSEMBLY	21
22	GFBA210	SCRAPER ASSEMBLY PARTS LIST	22
23	GFBA210	SCRAPER ASSEMBLY	23
24	GKCD0000	LEVEL ROD ASSEMBLY PARTS LIST	24
25	GKCD0000	LEVEL ROD ASSEMBLY	25
26		HYDRAULIC KIT PARTS LIST	26
27		HYDRAULIC KIT	27
28		*CHANGES	28

LITTLE GRUMPY SERIES I

<u>NO.</u>	<u>PART NO.</u>	<u>DESCRIPTION</u>	<u>QTY.</u>
1	GHC00000	PULL ASSEMBLY	1
2	GCC20-24	MAIN FRAME	1
3	GANG NO.1	GANG NO.1	1
4	GANG NO.2	GANG NO.2	1
5	GANG NO.3	GANG NO.3	1
6	GJCA0001	WHEEL LIFT ASSEMBLY L.H.	1
7	GJCA0002	WHEEL LIFT ASSEMBLY R.H.	1
8	FFBJA000	NUT NYLOC M20	7
9	FWBJA055	BOLT M20	8
10	FABJA065	BOLT M20	8
11	GJCA0003	WHEEL LIFT ASSEMBLY	1
12	FMDHHJ00	WASHER SQUARE M16	
13			



TOP VIEW



VIEW A-A

SIDE VIEW

3

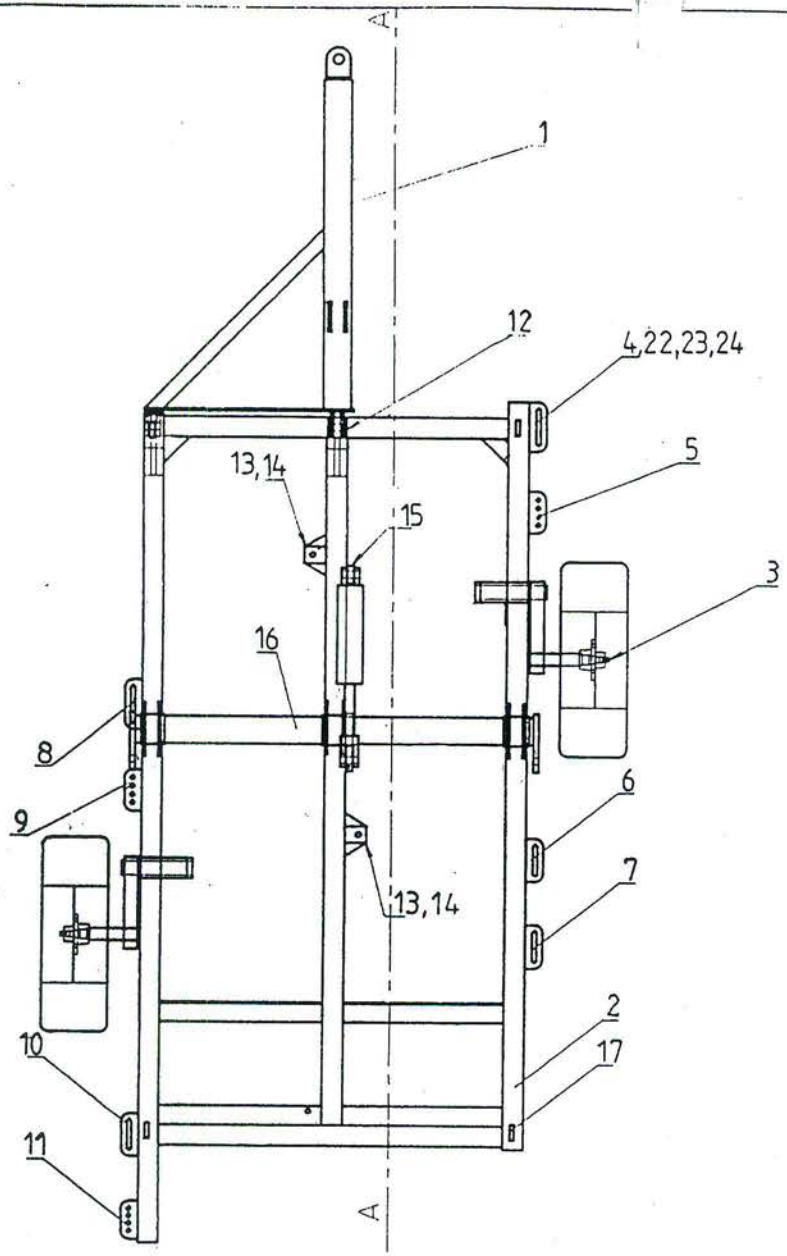
GRIZZLY ENGINEERING PTY. LTD			
TITLE: L/GRUMPY SERIES II.24 PLATE ASSY KIT.			
PART NO.			
SCALE: 1: 20.361	DATE: 2-11-89	DRG NO: GCC024	

LITTLE GRUMPY SERIES I

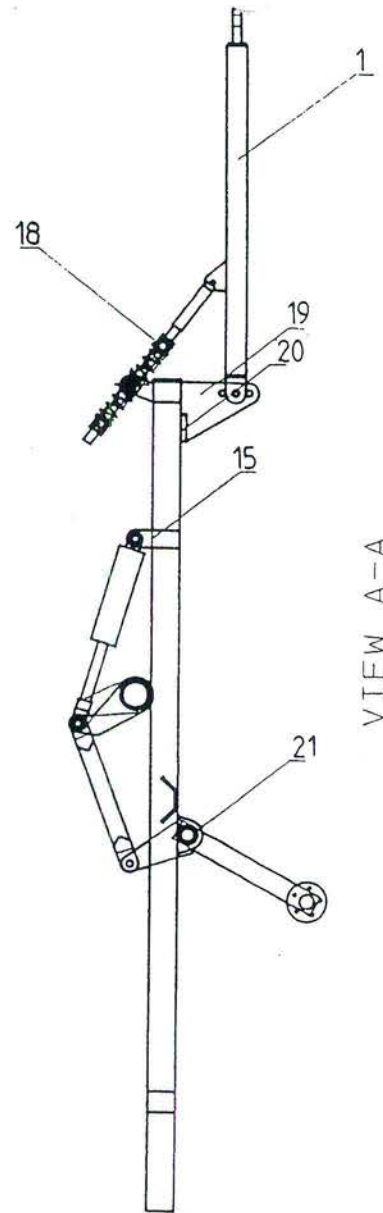
MAIN FRAME - GCC2024

<u>NO.</u>	<u>PART NO.</u>	<u>DESCRIPTION</u>	<u>QTY.</u>
1	GHC00000	PULL ASSEMBLY	1
2	GCC20-24	MAIN FRAME	1
3	GJCA0002	WHEEL ASSEMBLY	1
4	LACGA125	SLOT	1
5	LBCGA090	SERIES OF HOLES	1
6	LACGA100	SLOT	1
7	LACGA100	SLOT	1
8	LACGA125	SLOT	1
9	LBCGA090	SERIES OF HOLES	1
10	LACGA100	SLOT	1
11	LBCGA086	SERIES OF HOLES	1
12	CCBCG001	TOP LUG	2
13	CBBCG000	PIVOT LUG	2
14	CJAZE002	PIVOT LUG GUSSET	4
15	CBBCM002	RAM LUG	1
16	GJCA0003	WHEEL LIFT ASSEMBLY	1
17	CBBZH000	LIFTING LUG	4
18	GKCD0000	LEVEL ROD ASSEMBLY	1
19	CGBCJ000	PULL POST	2
20	MAGJA080	FLAT 65 X 16	2
21	CCBCE002	W/A GUSSET	4
22	FABHA055	BOLT M16	8
23	FFAHA000	NUT BLACK M16	8
24	FMDHHJ00	WASHER SQUARE 16MM	13

NOTE: MODIFICATIONS CAN BE MADE TO UPDATE LEVELLING SYSTEM TO
SERIES II HYDRAULIC PITCH CONTROL WITH UPDATE KIT GDEG0003



TOP VIEW



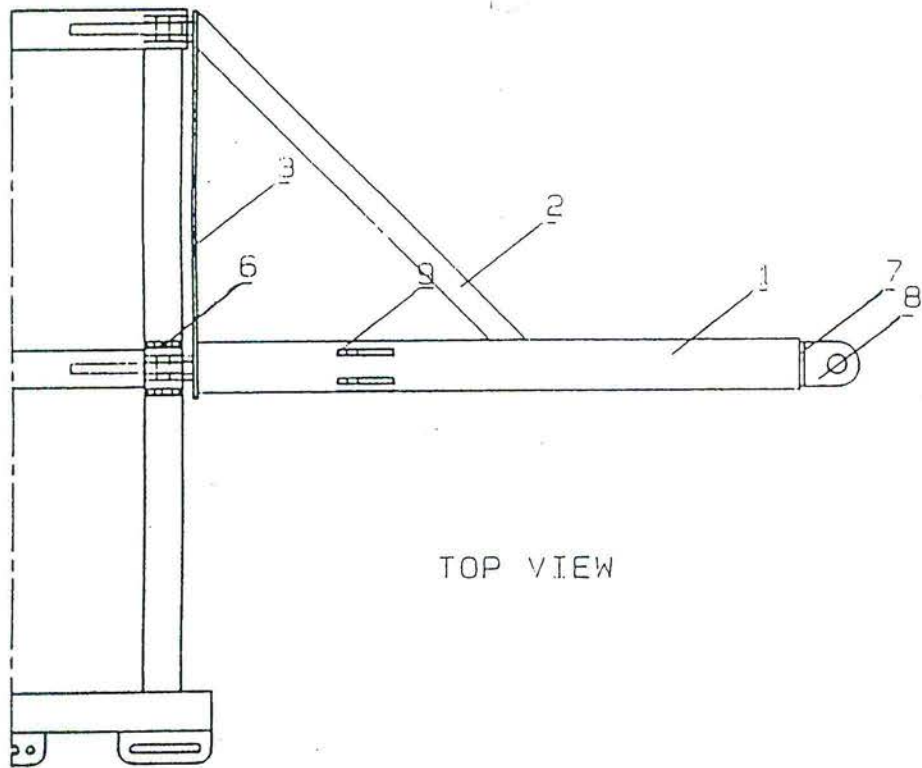
VIEW A-A

LITTLE GRUMPY TRAILING - FRAME

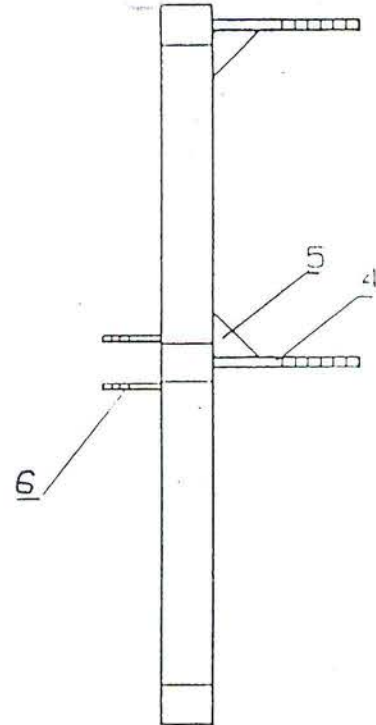
LITTLE GRUMPY SERIES I

PULL ASSEMBLY - GH00000

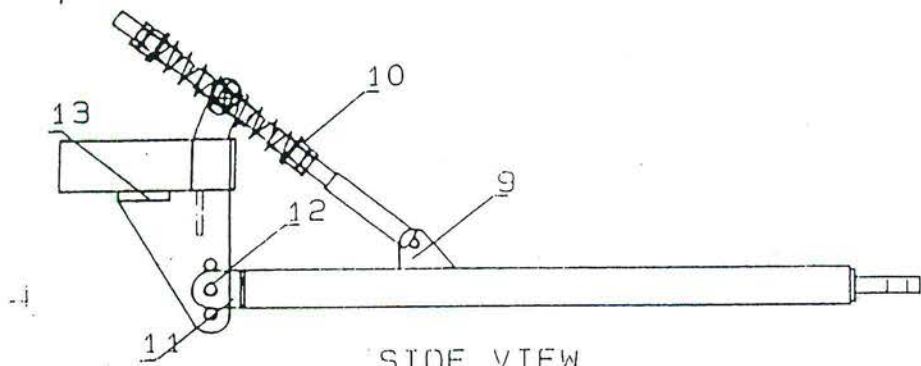
<u>NO.</u>	<u>PART NO.</u>	<u>DESCRIPTION</u>	<u>QTY.</u>
1	MHHHB200	PULL (RHS)	1
2	MGGFA931	RHS 51 X 51	1
3	MADMA770	FLAT 75 X 8	1
4	CGBCJ000	PULL POST	2
5	CJAZG000	GUSSET	2
6	CCBCG001	TOP LUG	2
7	MAFEA085	FLAT 25 X 12	1
8	GBCCP000	PULL TONGUE	1
9	CCBCG003	BOTTOM LUG	2
10	GKCD0000	LEVEL ROD ASSEMBLY	1
11	CBCCG001	PULL LUG	4
12	FGBKA065	PIN 1"	2
12A	FKAEA000	LYNCH PIN 6MM	2
13	MAGJA080	FLAT 16 X 65	2



TOP VIEW



ELEVATION



SIDE VIEW

LITTLE GRUMPY TRAILING - PULL

LITTLE GRUMPY SERIES I

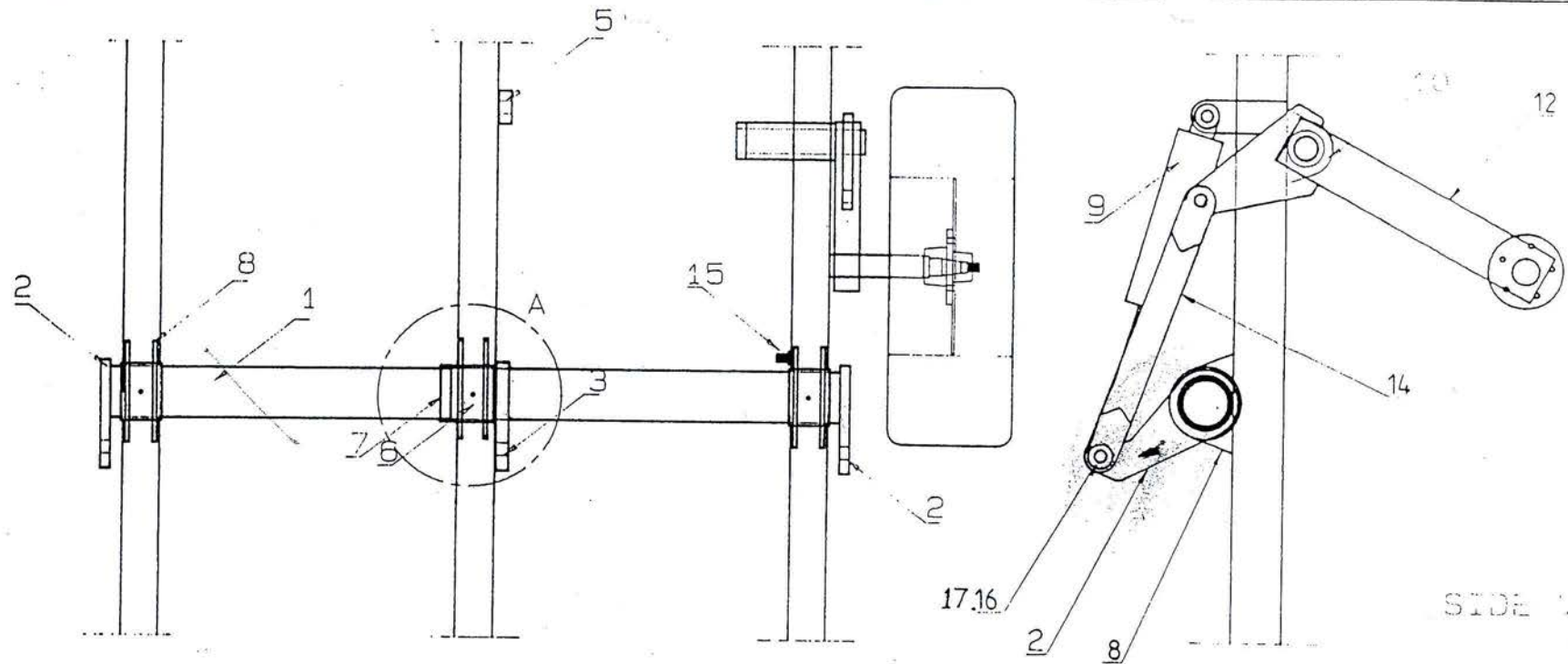
WHEEL LIFT ASSEMBLY

<u>NO.</u>	<u>PART NO.</u>	<u>DESCRIPTION</u>	<u>QTY.</u>
1	MECKB453	PIPE 90MM	1
2	CCECJ000	LINK LUG	2
3	CBBCM001	RAM LUG	1
4	BMAAA000	GREASE NIPPLE	3
5	CBBCM002	RAM LUG	1
6	MECMA085A	PIPE 100MM	3
7	MECMA020	PIPE 100MM	1
8	CCBCE000	PIPE ASSY GUSSET	6
9	HYA300/08	HYDRAULIC RAM	1
10	CCBCE002	WHEEL ASSY GUSSET	4
11	GNBEC001	DEPTH POINTER	1
12	MHHGA580A	WHEEL ASSY ARM	2
13	GNBEC000	DEPTH GAUGE	1
14	CJCA0000	LINK ARM	2
15	FABHA025	BOLT M16	1
16	FGBKA065	PIN 1"	4
17	FKAEA000	LYNCH PIN 6MM	4

LITTLE GRUMPY SERIES I

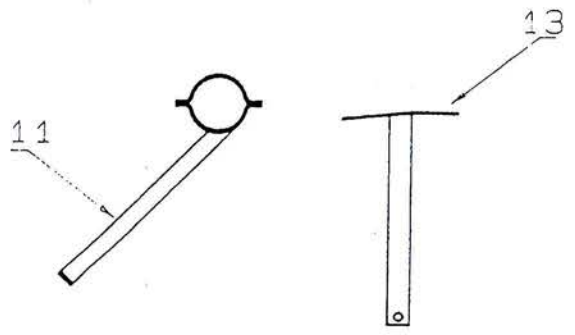
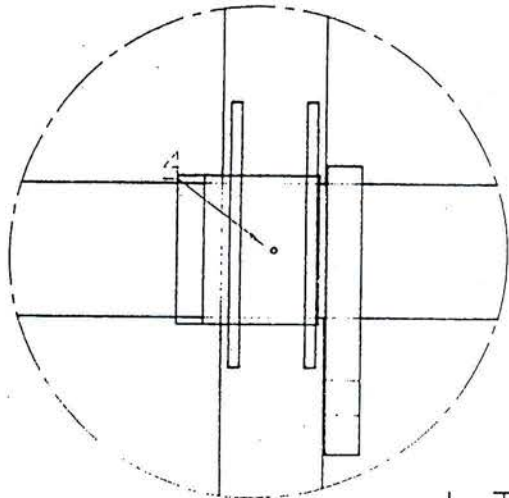
WHEEL ASSEMBLY - GJCA0002

<u>NO.</u>	<u>PART NO.</u>	<u>DESCRIPTION</u>	<u>QTY.</u>
1	MHHGA580A	WHEEL ARM	1
2	WMCAA000	H30 HUB & STUB ASSEMBLY	1
3	CCECJ001	LUG PLATE	1
4	MDDEA265	SHAFT	1
5	MFMKA184A	HOLLOW BAR	1
6	MFMJA020A	RETAINER RING	1
7	FABEA090	BOLT M8	1
8	CFECE000	END CAP	1
9	CJAZG000	GUSSET	1
10	CJAZE003	GUSSET	1
11	BJEGA035	VESCONITE BUSH	2
12	WKCA0000	GREASE CAP	1

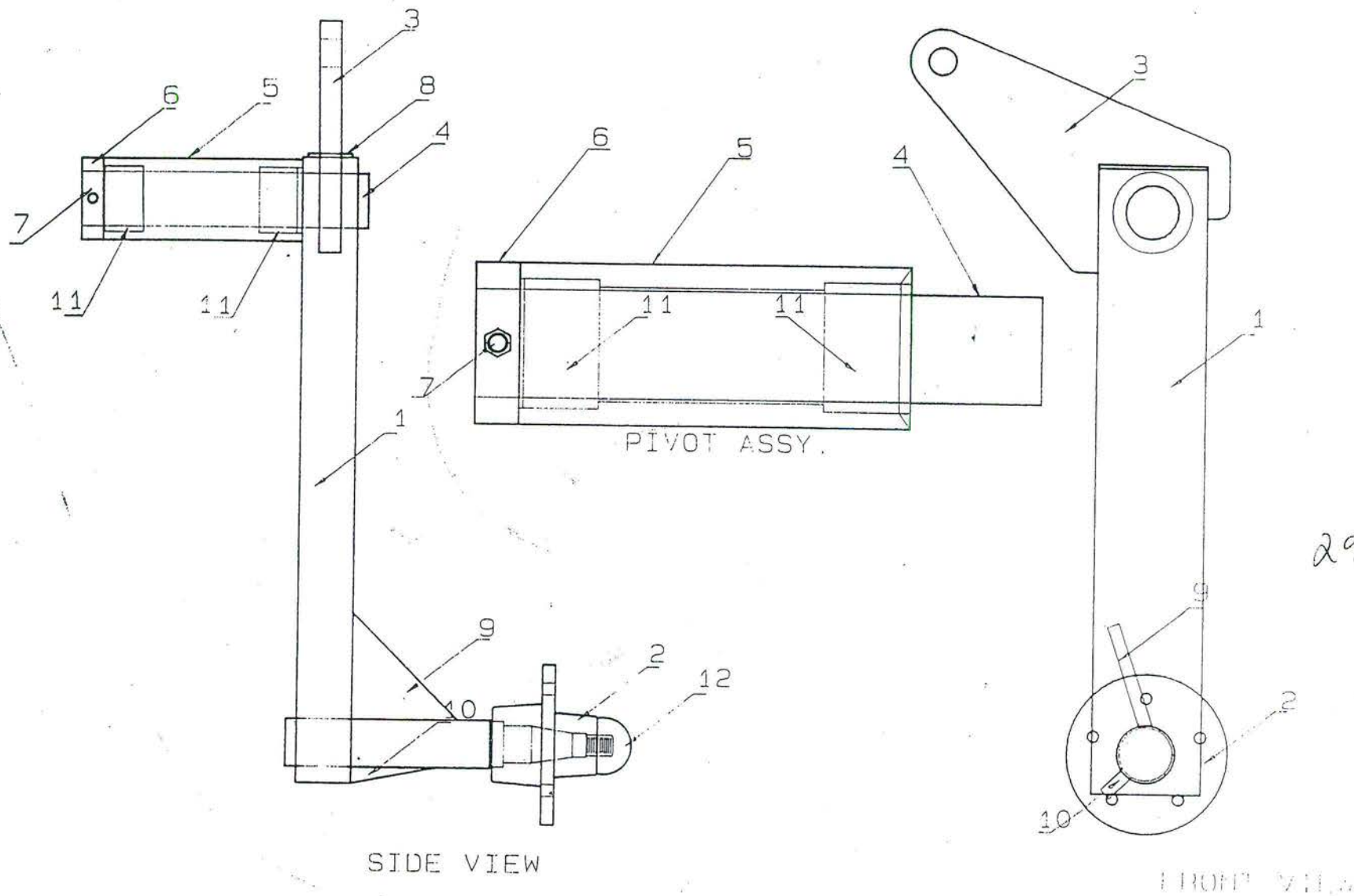


SIDE VIEW

TOP VIEW



DEPTH GAUGE



LITTLE GRUMPY TRAILING - WHEEL ASSY.

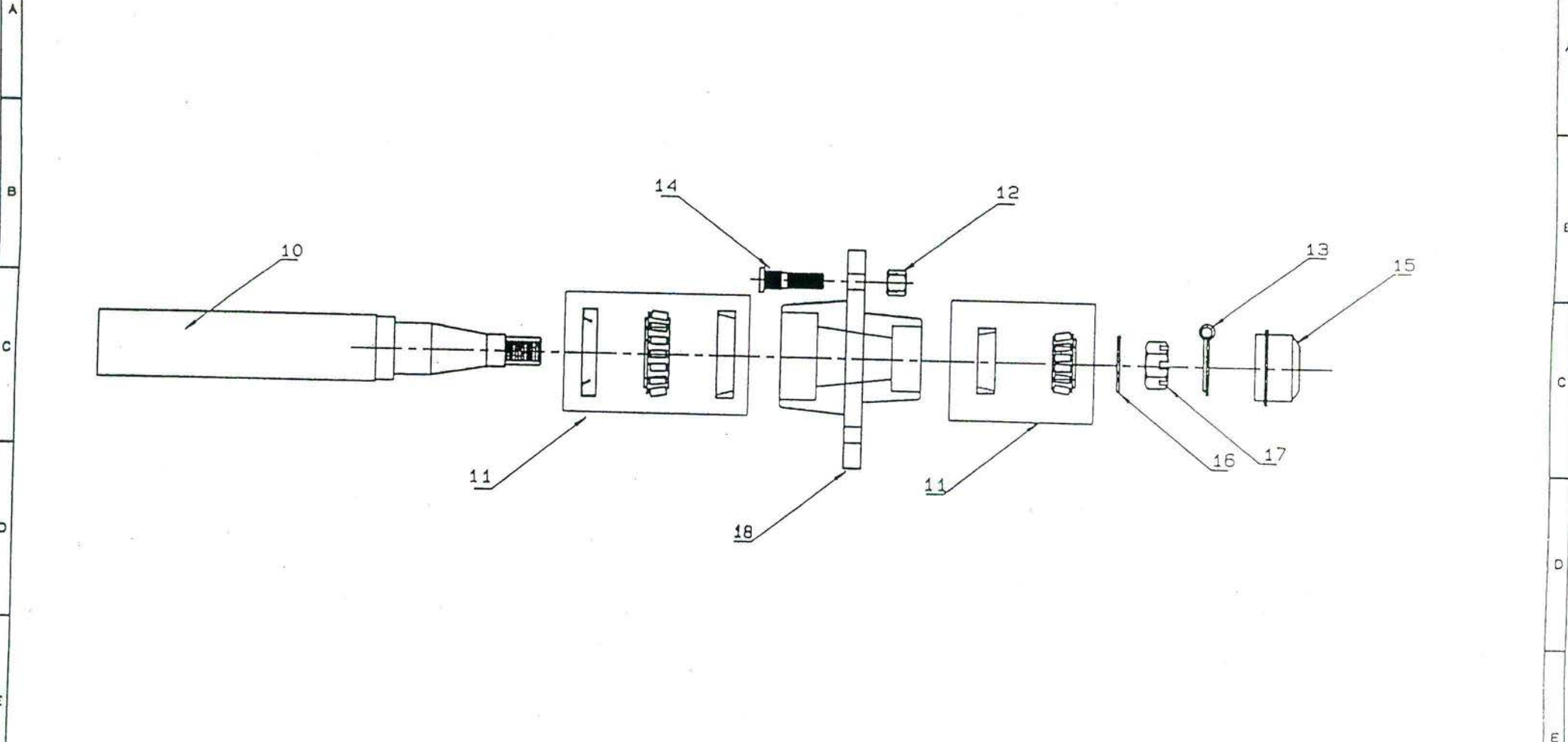
LITTLE GRUMPY SERIES I

H30 HUB AND STUB ASSEMBLY - WMCAA000

<u>NO.</u>	<u>PART NO.</u>	<u>DESCRIPTION</u>	<u>QTY.</u>
10	*WACAAB00	H30 STUB AXLE	1
11	*BACAA000	H30 BEARING KIT	1
12	FFFFA000	WHEEL NUT	5
13	FKCDA040	SPLIT PIN	1
14	FDBGA043	WHEEL STUD	5
15	WKCA0000	GREASE CAP	1
16	FMAJCG00	WASHER	1
17	FFCHA000	AXLE NUT	1
18	WJCAA000	H30 HUB WITH BEARING FITTED	1

NOTE: * CHANGE HAS BEEN MADE REFER TO PAGE 28 OR MASTER FILE.

1 2 3 4 5 6 7 8



				ALL DIMENSIONS IN MILLIMETERS. TOLERANCES				GRIZZLY ENGINEERING.	
				LINEAR ± 0.5		DRAWN 6. BAILEY			
				ANGULAR ± 0.5		CHECKED		HT HUB & STUB ASSY.	
AMENDMENTS.				AS1100		APPROVED		SCALE NO SCALE	
ISSUE	DATE	ZONE	CHANGE	BY	CKD	DATE 17-5-90		DRAWING NO. HTASSY	
1	2	3	4	5	6	7		A3	

13

1 2 3 4 5 6 7 8

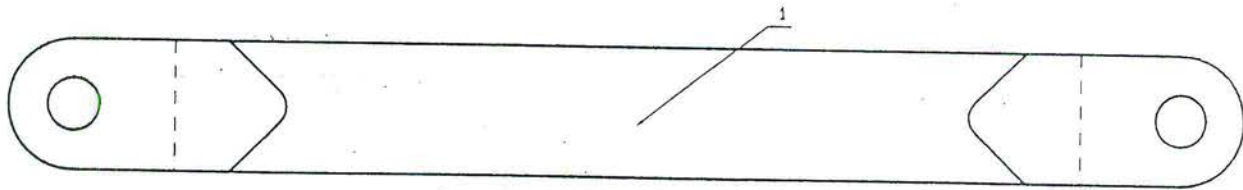
LITTLE GRUMPY SERIES I

WHEEL LIFT LINK ASSEMBLY L & R - GJCA0000

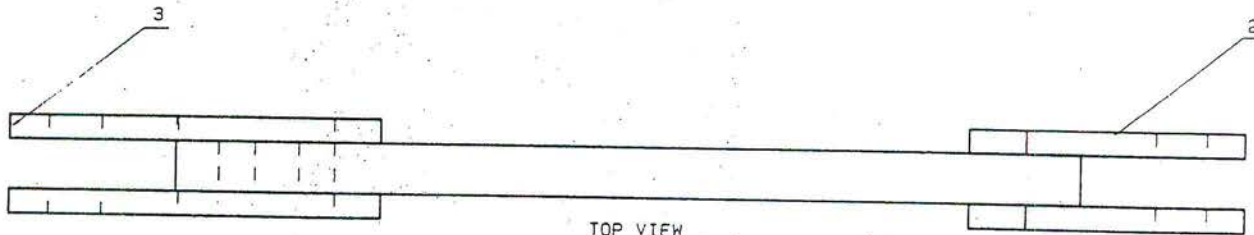
<u>NO.</u>	<u>PART NO.</u>	<u>DESCRIPTION</u>	<u>QTY.</u>
1	MAJMA450	LINK ARM	1
2	CCDCG000	LINK LUG	6
3	CCDCG001	ADJUSTABLE LINK LUG	2
4	MAJMA450A	ADJUSTABLE LINK ARM	1
5	FGBKA065	PIN 1"	4
6	FABHA075	BOLT M16	2
7	FFAHA000	BLACK NUT M16	2
8	FMCHE000	WASHER 16MM STRUCTURAL	4
9	FKAEA000	LINCH PIN 6MM	4



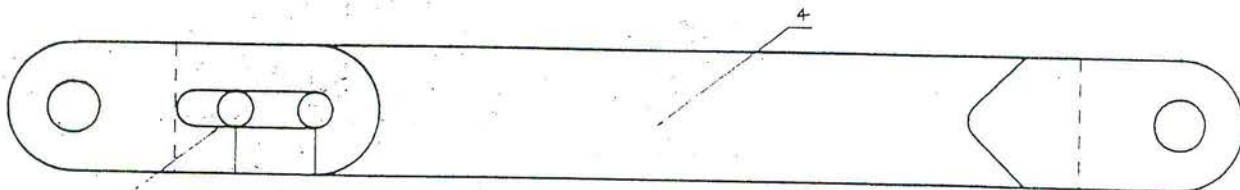
TOP VIEW



NOT ADJUSTABLE LINK

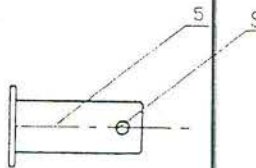


TOP VIEW



6, 7, 8

ADJUSTABLE LINK



NR	QTY	PART, MATERIAL	DIMENSIONS	PART NO.
GRIZZLY ENGINEERING PTY				
TITLE: WHEEL LIFT LINK ASSY L&R, FLT GRUMPY TR				
PART NO GJCA0000				
SCALE 1:2		DATE: 1 05 86		DRG NO. GJCA0000

LITTLE GRUMPY SERIES I

GANG NO. 1

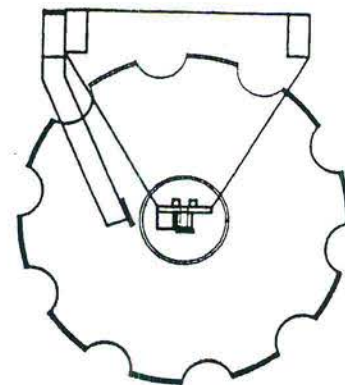
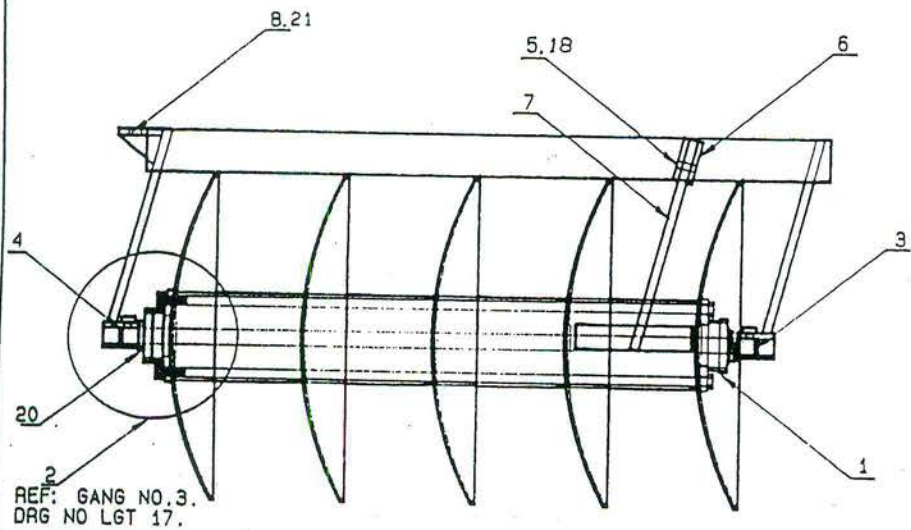
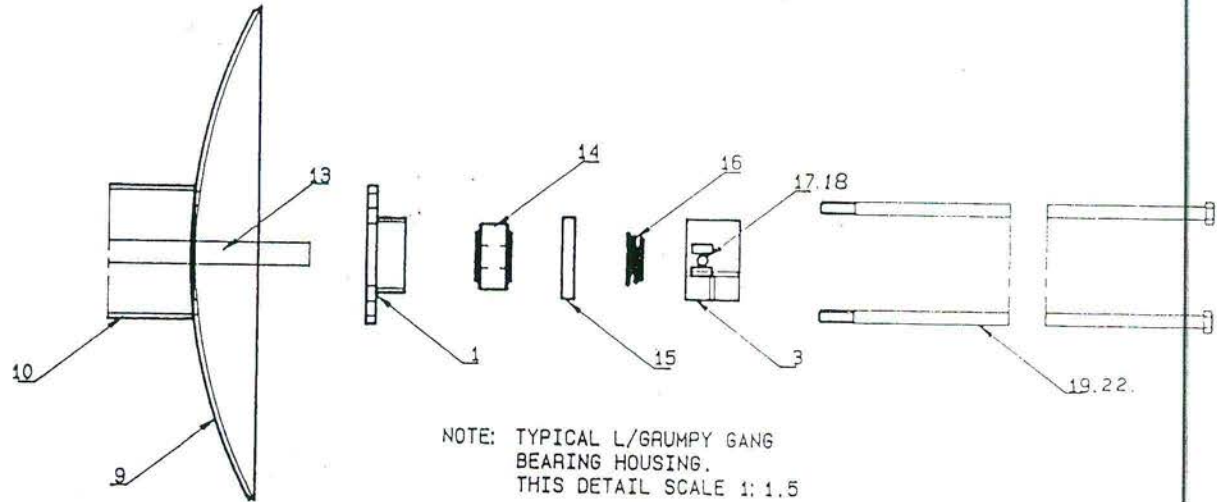
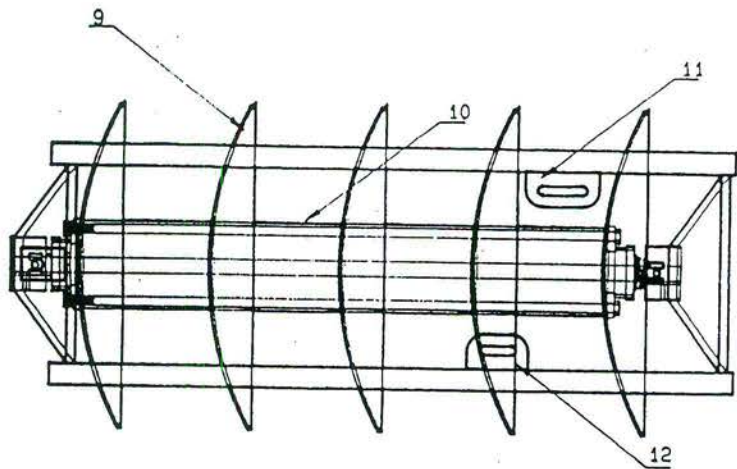
<u>NO.</u>	<u>PART NO.</u>	<u>DESCRIPTION</u>
1	*BEB085B0	LEAD BEARING HOUSING ASSEMBLY
2	*BFB085B0	THRUST BEARING HOUSING ASSEMBLY
3	GEAEA000	SINGLE AXLE CARRIER ASSEMBLY R.H.
4	GEADA000	SINGLE AXLE CARRIER ASSEMBLY L.H.
5	FABGA050	BOLT M12
6	MADGA079A	SCRAPER LUG
7	GFBA0210	SCRAPER ASSEMBLY L.H.
8	CBBCG000	GANG PIVOT LUG
9	D24DSB03	DISC
10	MECPA230	SPOOL 230MM
11	LACGA075	SLOT 75MM
12	LACGA050	SLOT 50MM
13	MJBHB170A	28MM AXLE
14	*BPAAB000	BEARING 28 X 85 CYRINDRICAL
15	BNSTA000	DUST COVER
16	FHCPA035	GANG SPRING
17	FABGA065	BOLT M12
18	FFBGA000	NYLOC NUT M12
19	FAAHB000	GANG BOLT M16 5 DISC
20	MGFEA010	10MM SPACER
21	CJAZE000	PIVOT LUG GUSSET
22	FFBHA000	NYLOC NUT M16

NOTE

* CHANGE HAS BEEN MADE REFER TO PAGE 28.

* BEB085B0 AND BFB085B0 BEARING HOUSING (CYLINDRICAL), HOUSINGS ONLY ARE NO LONGER STOCKED, HAVE BEEN REPLACED BY BEB080B0 AND BFB080B0 BEARING HOUSINGS (SPHERICAL) WHICH WILL SUIT SERIES I MACHINES.

* BPAAB000 CYLINDRICAL BEARING 28 X 85 IS STOCKED AT GRIZZLY.



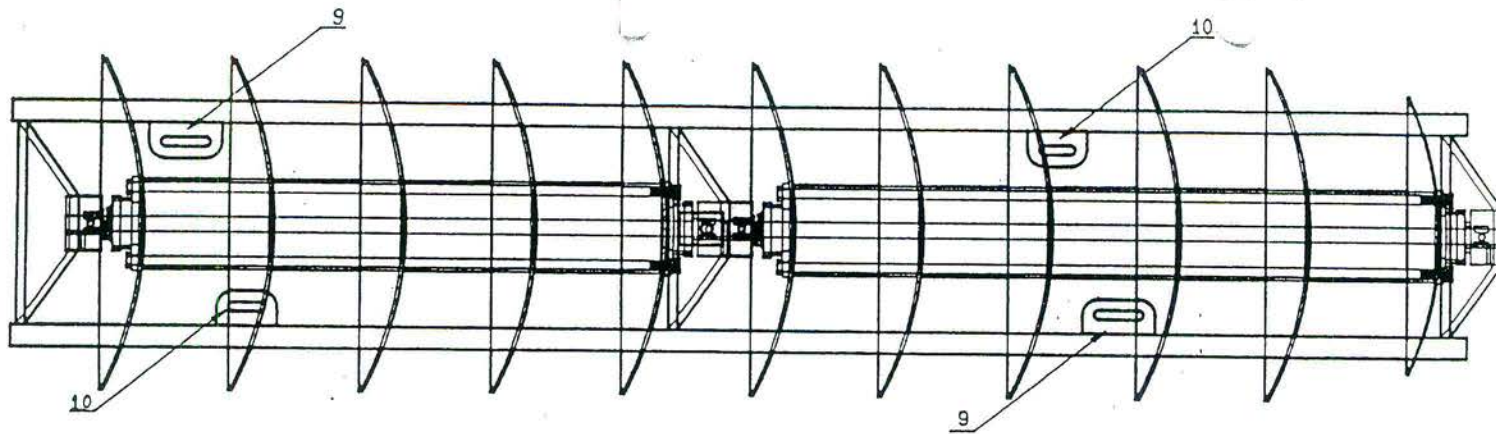
LITTLE GRUMPY TRAILING - GANG NO. 1

LITTLE GRUMPY SERIES I

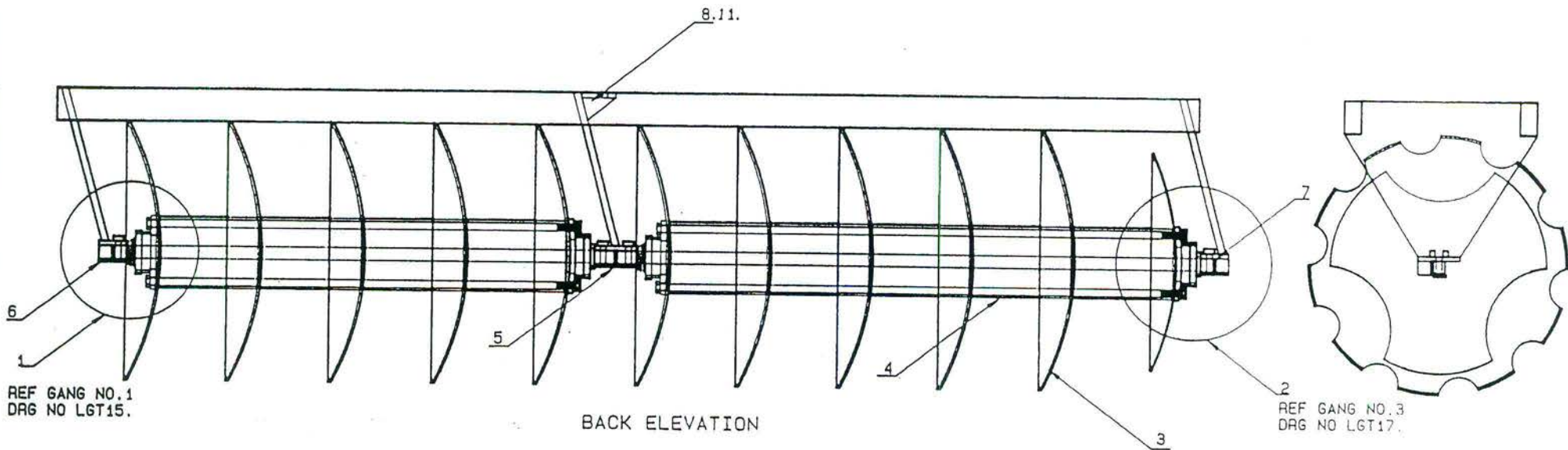
GANG NO. 2

<u>NO.</u>	<u>PART NO.</u>	<u>DESCRIPTION</u>
1	*BEB085B0	LEAD BEARING HOUSING ASSY
2	*BFB085B0	THRUST BEARING HOUSING ASSY
3	D24DSB03	24" DISC.
4	MECPA230	SPOOL 230MM
5	GEABA000	DOUBLE AXLE CARRIER
6	GEADA000	SINGLE AXLE CARRIER L.H.
7	GEAEA000	SINGLE AXLE CARRIER R.H.
8	CBBCG000	GANG PIVOT LUG
9	LACGA075	SLOT
10	LACGA050	SLOT
11	CJAZE000	GUSSET

- NOTE:
- * BEB085B0 AND BFB085B0 BEARING HOUSING (CYLINDRICAL), HOUSINGS ONLY ARE NO LONGER STOCKED, HAVE BEEN REPLACED BY BEB080B1 AND BFB080B0 (SPHERICAL) WHICH WILL SUIT SERIES I MACHINES.
 - * BPAAB000 CYLINDRICAL BEARING 28 X 85 IS STOCKED BY GRIZZLY.
 - * CHANGE HAS BEEN MADE REFER TO PAGE 28.



TOP VIEW



BACK ELEVATION

LITTLE GRUMPY TRAILING - GANG NO. 2

LITTLE GRUMPY SERIES I

GANG NO. 3

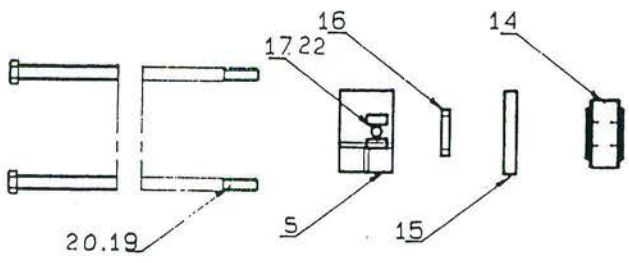
<u>NO.</u>	<u>PART NO.</u>	<u>DESCRIPTION</u>
1	*BEB085B0	LEAD BEARING HOUSING ASSY
2	*BFB085B0	THRUST BEARING HOUSING ASSY
3	GEAEA000	SINGLE AXLE CARRIER R.H.
4	FHCPA035	GANG SPRING
5	GEADA000	SINGLE AXLE CARRIER L.H.
6	MADGA079A	SCRAPER LUG
7	FABGA050	BOLT M12
8	GFBA0210	SCRAPER ASSEMBLY L.H.
9	CBBCG000	GANG PIVOT LUG
10	D24DSB03	24" DISC
11	LACGA075	SLOT 75MM
12	MECPA230	SPOOL 230MM
13	LACGA050	SLOT 50MM
14	*BPAAB000	BEARING 28 X 85 CYLINDRICAL
15	BNSTA000	DUST COVER
16	MGFEA010	10MM SPACER
17	FABGA065	BOLT M12
18	MJBHB400A	28MM AXLE
19	FAAHB240	GANG BOLT M16
20	FFBHA000	NYLOC NUT M16
21	CJAZE000	GUSSET
22	FFBGA000	NYLOCK NUT M12

NOTE:

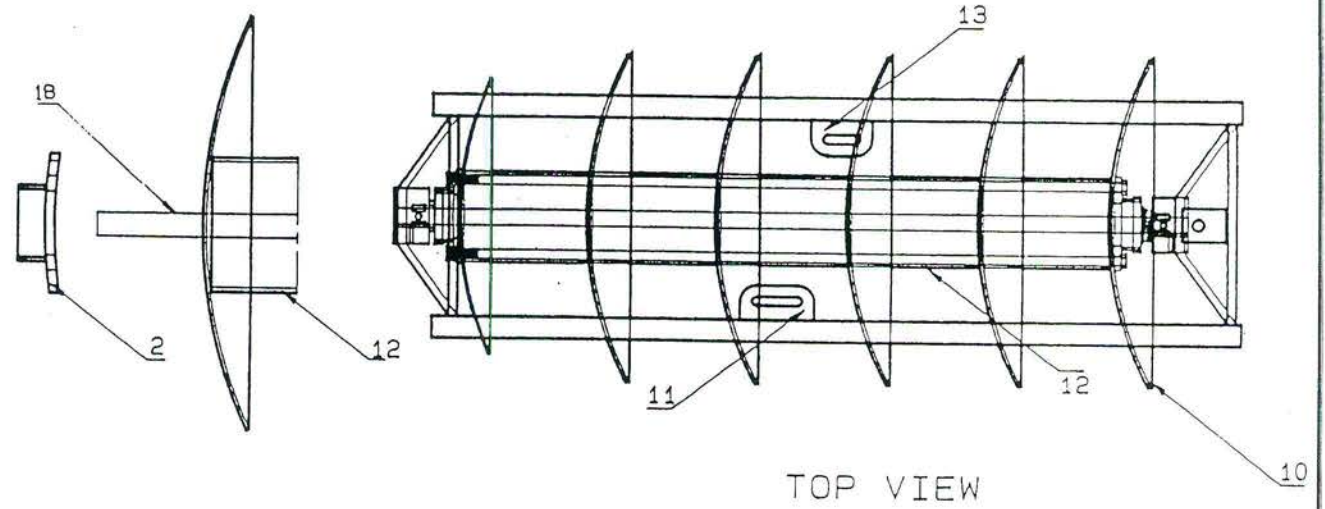
* CHANGE HAS BEEN MADE REFER TO PAGE 28.

* BEBO85B0 AND BFB085B0 BEARING HOUSINGS (CYLINDRICAL BEARING), HOUSINGS ONLY ARE NO LONGER STOCKED, HAVE BEEN REPLACED BY BEB080B0 AND BFB080B00 BEARING HOUSING (SPHERICAL BEARING) WHICH WILL SUIT SERIES I MACHINES.

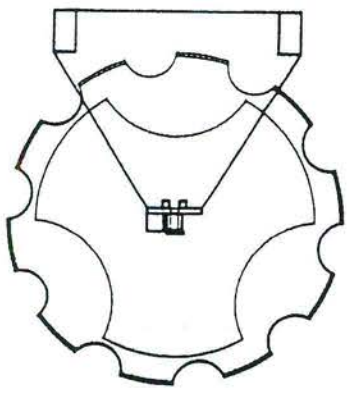
* BPAAB000 CYLINDRICAL BEARING 28 X 85 IS STOCKED BY GRIZZLY.



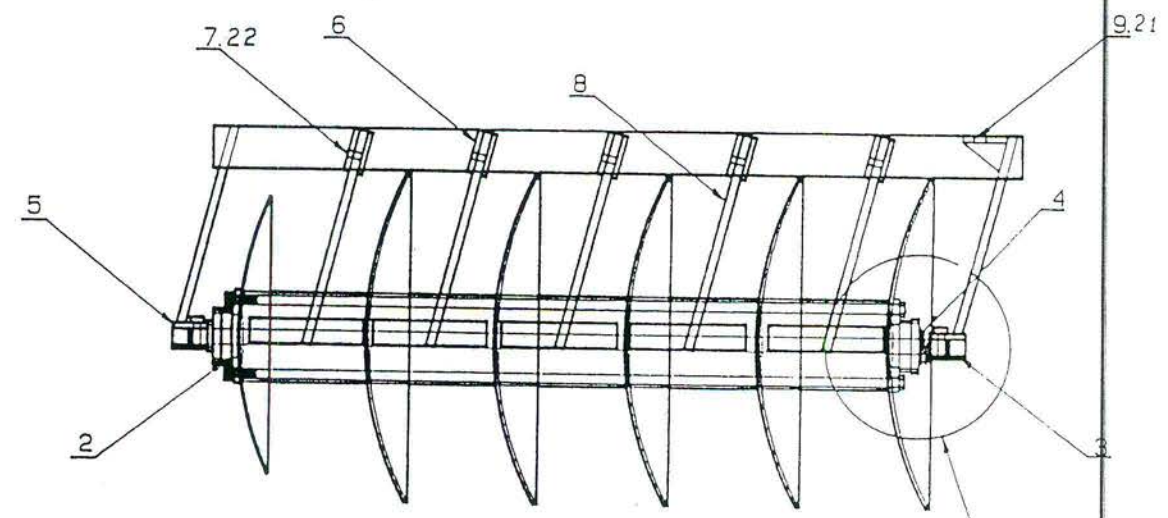
NOTE: TYPICAL L/GRUMPY GANG
BEARING HOUSING.
THIS DETAIL SCALE 1: 1.5



TOP VIEW



SIDE VIEW



ELEVATION

REF GANG NO.
DRG NO L6T15.

LITTLE GRUMPY TRAILING - GANG NO.3

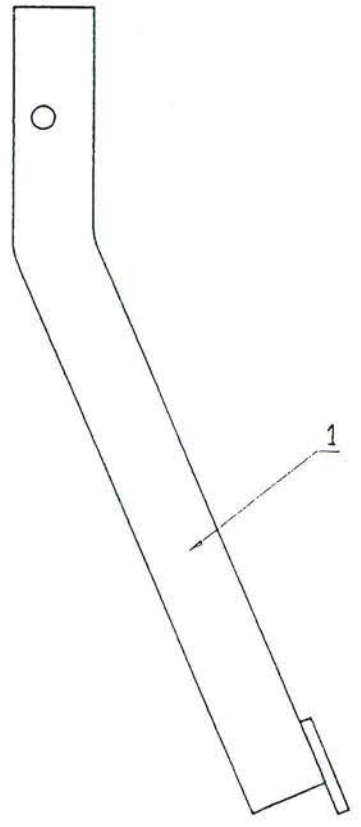
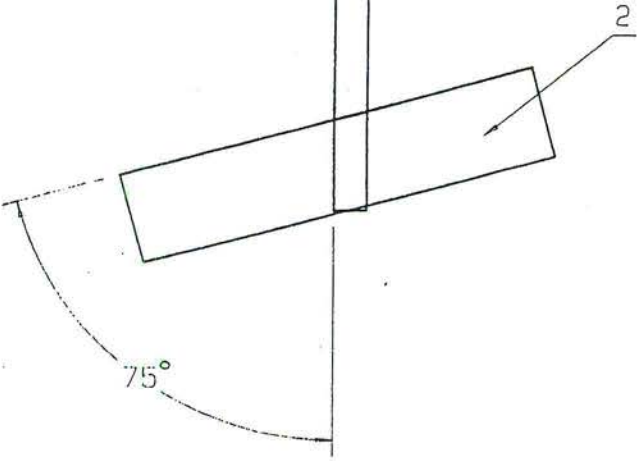
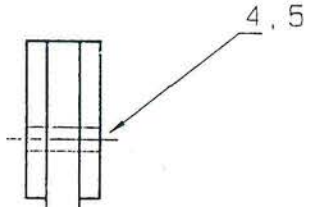
LITTLE GRUMPY SERIES I

SCRAPER ASSEMBLY LEFT HAND - GFBAA210

<u>NO.</u>	<u>PART NO.</u>	<u>DESCRIPTION</u>	<u>QTY.</u>
1	MAGGA417A	SCRAPER ARM	1
2	MCCHA210	SCRAPER PAD	1
3	*MADGA079A	SCRAPER LUG	2
4	FABGA050	BOLT M12	1
5	FFBGA000	NYLOC NUT M12	1

NOTE: RIGHT HAND SCRAPER - PART NO. GFBBA210

*CHANGE HAS BEEN MADE REFER TO PAGE 28



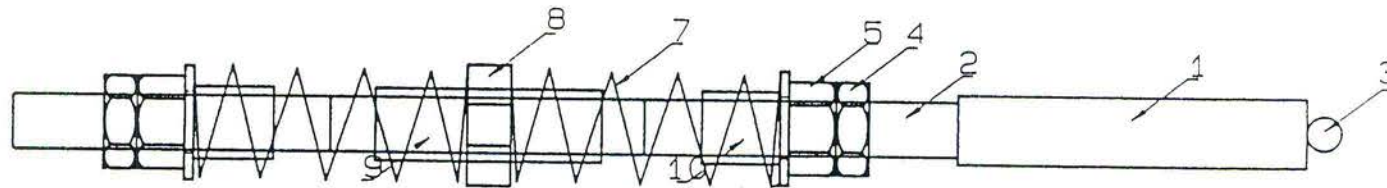
SCRAPER

GRIZZLY ENGINEERING PTY			
TITLE: LT. GRUMPY TR SCRAPER			
PART NO			
SCALE	1:2	DATE: 1 07 88	DRG NO.GFBAA210

LITTLE GRUMPY SERIES I

LEVEL ROD ASSEMBLY - GKCD0000

<u>NO.</u>	<u>PART NO.</u>	<u>DESCRIPTION</u>	<u>QTY</u>
1	MJBKA200	SQUARE BAR 40 X 40	1
2	FPJPA540	THREADED BAR	1
3	MDEJA075	PIN	1
4	FFDPA000	HALF NUT	2
5	FFGPA001	SPRING ASSY NUT	2
7	FHNJA160	SPRING	2
8	CGBAM000	SWIVEL BLOCK	1
9	MECEA130	PIPE 130mm	1
10	MECEA0045	PIPE 45mm	2



GDEG0005

update

for pitch

control

20-24pH

LITTLE GRUMPY TRAILING - LEVELING ROD

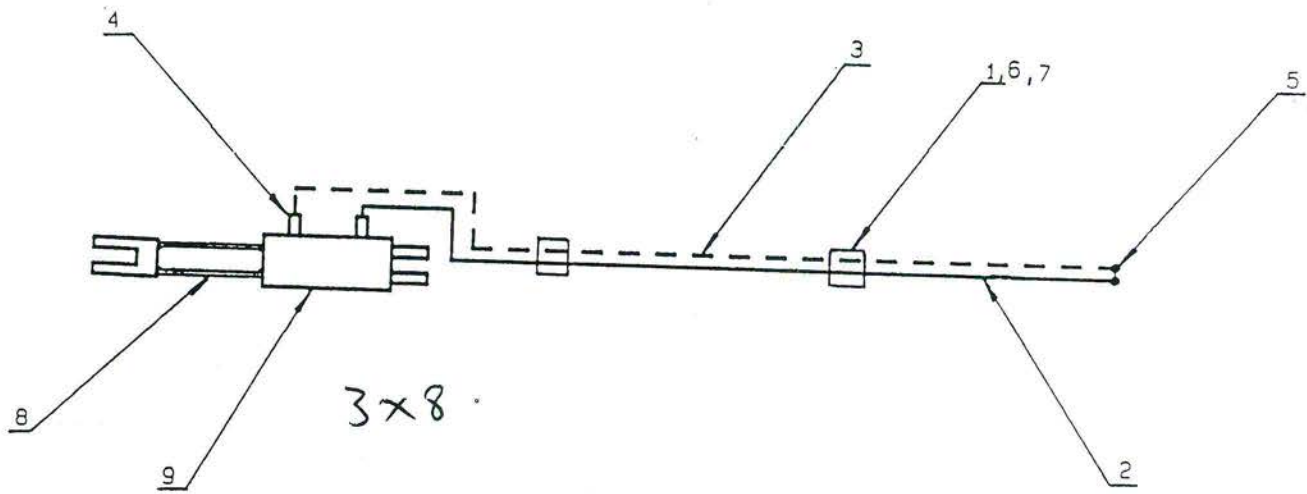
25

DWG NO. LGT22

LITTLE GRUMPY SERIES I

HYDRAULIC KIT

<u>NO.</u>	<u>PART NO.</u>	<u>DESCRIPTION</u>	<u>QTY.</u>
1	FABEA045	BOLT M8	2
2	HGCAD200	HOSE (3,200) HHAKBU07 HHAKMU07	1
3	HGCAD400	HOSE (3,400) HHAKBU07 HHAKMU07	1
4	HHABAM07	FITTING	2
5	HHDMNW07	QUICK RELEASE COUPLING	2
6	HJBCA000	CLAMP SHELL	4
7	HJBFA000	TOP PLATE	2
8	HRBAA235	TRANSPORT BLOCK 235MM	1
9	HYA300/08	HYD. CYL. 3 X 8 1" PINS	1



GRIZZLY ENGINEERING PTY. LTD		
TITLE: L/GRUMPY SERIES I HYDRAULIC SYSTEM.		
PART NO.		
SCALE: 1: 14.255	DATE: 1-11-89	DRG NO: HFCAS000

CHANGES - LITTLE GRUMPY SERIES I

REFERENCE		OLD	NEW	DATE OF	SERIAL NO.	NOTES
PAGE	ITEM	PART NO.	PART NO.	CHANGE	OF CHANGE	
12	10, 18	WJCAA001	WJCAA000			FROM H25 LIGHT DUTY TO H25 HEAVY DUTY REFER TO MASTER FILE FOR DIMENSIONS OF EACH.
12	11	BACAA001	BACA000			AS ABOVE.
16, 18, 20	1	BEB085B0	BEB080B0		LG24-474	FROM CYLINDRICAL BEARING TO SPHERICAL BEARING. FOR MORE INFORMATION REFER TO MASTER FILE.
16, 18, 20	2	BFB085B0	BFB080B0		LG24-474	FROM CYLINDRICAL BEARING TO SPHERICAL BEARING. FOR MORE INFORMATION REFER TO MASTER FILE.
16, 20	14	BPAAB000	BPAAB001		LG24-474	FROM CYLINDRICAL BEARING TO SPHERICAL BEARING. FOR MORE INFORMATION REFER TO MASTER FILE.
16, 20, 22	6, 3	MAADHA100	MADGA079A	AUGUST '88		FROM SINGLE SCRAPER LUG TO DOUBLE LUG.