

GRIZZLY

SPARE PARTS MANUAL

HEAVY SERIES

32-48 PLATE



HEAVY SERIES H32-48 PLATE

CONTENTS

<u>NO.</u>	<u>PART NO.</u>	<u>DESCRIPTION</u>	<u>PAGE</u>
1		SPECIFICATIONS - GANG BOLTS - GANG AXLES - PULL TONGUES - TOOL KIT	1
2	GAH036	ASSEMBLY KIT	3
3	GCH32-48	FRAME ASSEMBLY	5
4	GHGA0000	PULL ASSEMBLY	7
5	GPB00000	PULL TONGUE AND SIDE PLATES	9
6	S8005	WHEEL ASSEMBLY 11.00 DUALS	11
7	WMNAA740	H70 HUB & STUB ASSY 11.00 DUALS	13
8	GJGAA0001	WHEEL LIFT ASSEMBLY LEFT	15
9		WHEEL LIFT SIDE PLATE ASSY	17
10	H36G1	GANG NO.1	19
11	H36G2	GANG NO.2	21
12	H36G3	GANG NO.3	23
13	S48G2	GANG & BEARING HOUS ASSY (HEAVY)	25
14	S48G2	GANG & BEARING HOUS ASSY (ROWCROPPER)	27
15	GFHAA210	"H" SCRAPER ASSEMBLY	29
16	SFPULL	LEVELLING SYSTEM OPTIONS	31
17	GDFE0000	HYDRAULIC PITCH CONTROL/LEVELLING ROD	33
18	HFHAC000	HYDRAULIC KIT	35
19		CHANGES	36

HEAVY SERIES HG32/36/40/48 PLATE

SPECIFICATIONS

"HG" SERIES	WIDTH	HORSE POWER
HG32	3.6M (12')	110-150
HG36	4.1M (13'6")	130-180
HG40	4.6M (15')	140-200
HG48	5.5M (18')	140-200

ROWCROPPERS	WIDTH	HORSEPOWER
HG32R	4.7M (15'5")	140-220
HG36R	5.3M (17'4")	150-240
HG40R	5.8M (19'3")	160-250
HG44R	6.5M (21'8")	200-280

GANG AXLES USED

GANG BOLTS USED

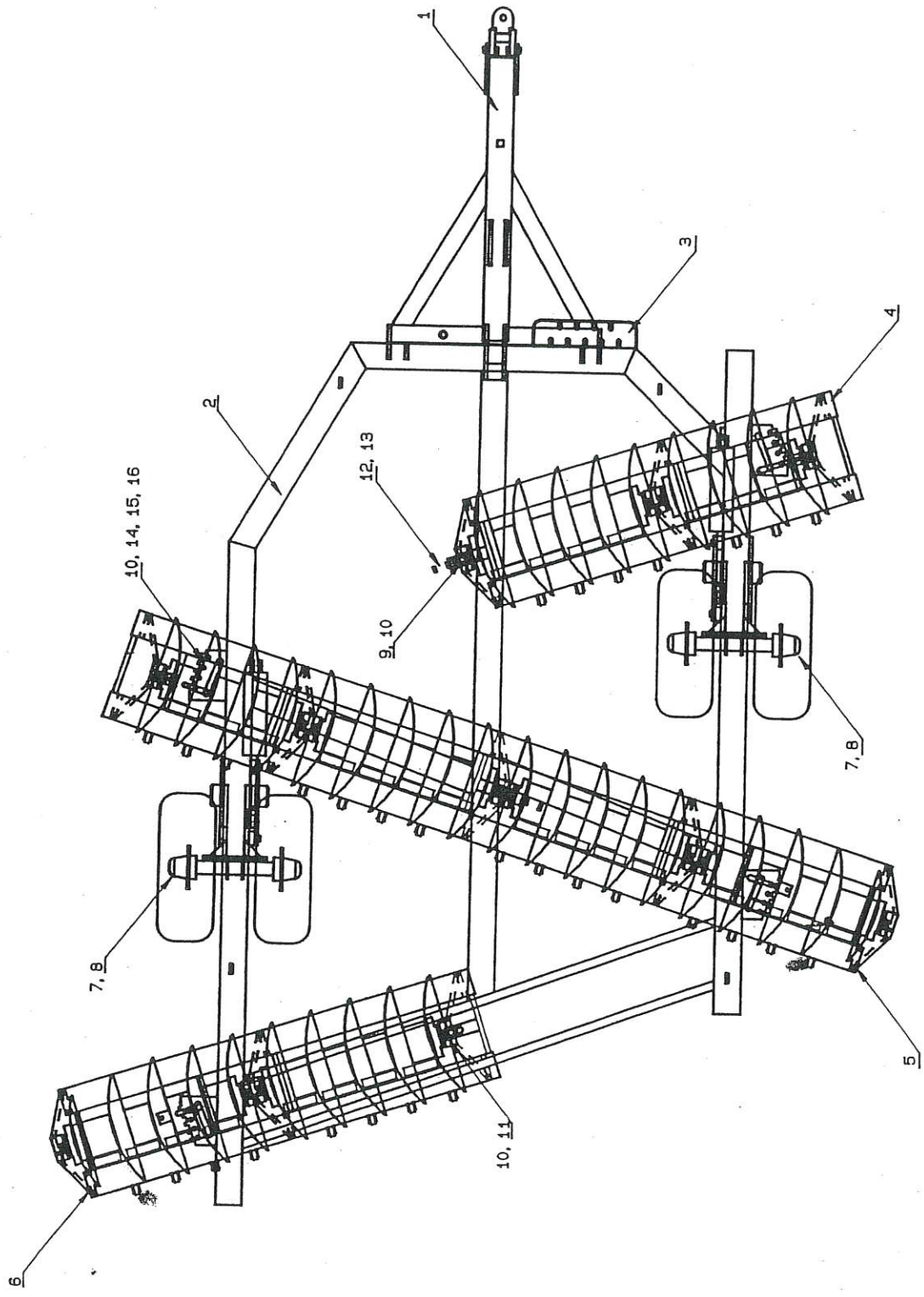
PULL TONGUES AVAILABLE

NO. OF DISC	PART NO.		NO. OF DISC	PART NO. M20	PART NO.	HOLE SIZE MM	THICKNESS MM	TYPE
	2 HOLES	1 HOLES						
3	MJAMA707A	MJAMA688	3	FAAJA550	GPBAA000	28	50	FLOPPY
4	MJAMA944A	MJAMA925A	4	FAAJA790	GPBAB000	28	50	SWIVEL
5	MJAMB181A	MJAMB162A	5	FAAJB020	GPEBA000	40	70	FLOPPY
6	MJAMB418A	MJAMB399A	6	FAAJB260	GPEBB000	40	70	SWIVEL
7	MJAMB655A	MJAMB636A	7	FAAJB490	GPDCA000	50	100	FLOPPY
8	MJAMB892A	MJAMB873	8	FAAJB730	GPDCB000	50	100	SWIVEL

HEAVY SERIES H32-48 PLATE
ASSEMBLY KIT - GAH036

<u>NO.</u>	<u>PART NO.</u>	<u>DESCRIPTION</u>	<u>QTY.</u>
1	GHGA00000	PULL ASSEMBLY HEAVY	1
2	GCH3248	FRAME ASSEMBLY	1
3	GNBHF000	TOOL BOX	1
4	H36G1	GANG NO.1	1
5	H36G2	GANG NO.2	1
6	H36G3	GANG NO.3	1
7	WMNAA000	H70 HUB & STUB ASSY 11.00 DUALS	2
8	WSMEEB00	H70 RIM & TYRE ASSY 11.00 X 16	4
9	FACNA080	BOLT M30	2
10	FFBNA000	NUT NYLOC M30	7
11	FACNA110	BOLT M30	1
12	FEBJA110	SET SCREW M20	3
13	FFDJA000	HALF NUT M20	3
14	FACNA090	BOLT M30	4
15	FGBKA065	PIN 1"	4
16	FMASGM00	WASHER	4

NOTE: * CHANGE HAS BEEN MADE. REFER TO MASTER FILE



3

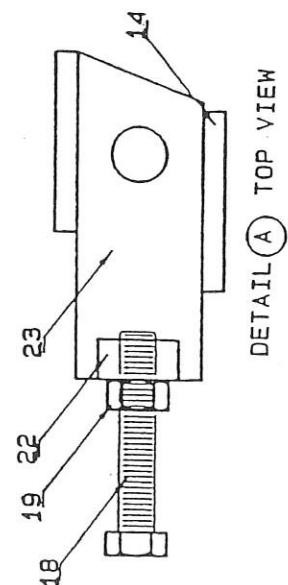
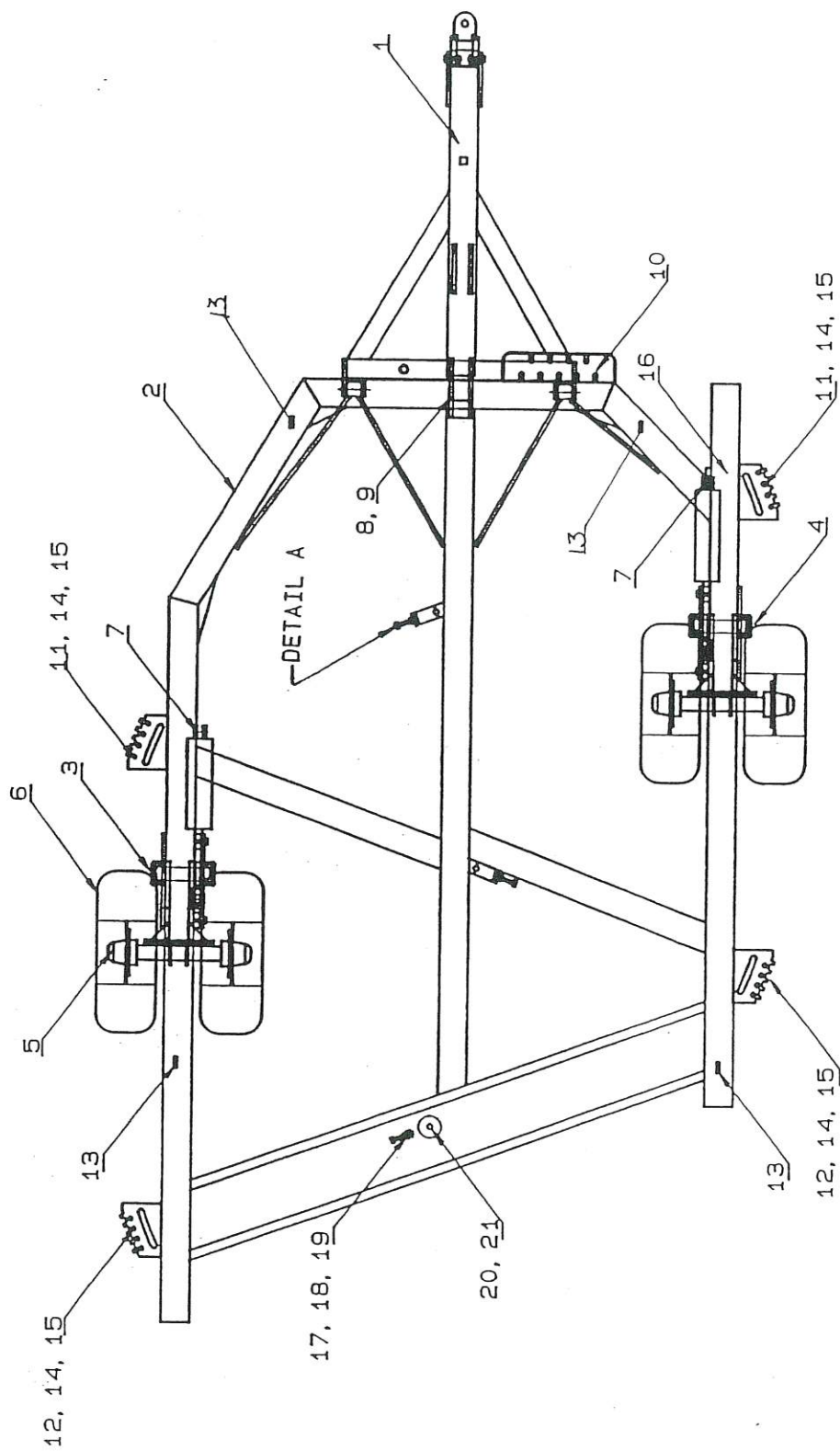
GRIZZLY ENGINEERING PTY. LTD
 TITLE: HEAVY 36 PLATE ASSY KITS.
 PART NO.
 SCALE: 1:25, 63 | DATE: 21-9-89 | DRG NO: GAH036

HEAVY SERIES H32-48 PLATE

MAIN FRAME - GCH3248

<u>NO.</u>	<u>PART NO.</u>	<u>DESCRIPTION</u>	<u>QTY.</u>
1	GHGA0000	PULL ASSEMBLY HEAVY	1
2	GCH3248	FRAME ASSEMBLY	1
3	GJHA0002	WHEEL LIFT ASSEMBLY LEFT	1
4	GJHA0001	WHEEL LIFT ASSEMBLY RIGHT	1
5	WMNAA000	H70 HUB & STUB ASSY 11.00 DUALS	2
6	WSMEEB00	H70 RIM & TYRE ASSY 11.00 X 16	4
7	CBBHM001	RAM LUG	2
8	CBBFJ000	TOP LEVEL LUG	2
9	GDFE0000	LEVELING SYSTEM	1
10	GNBHF000	TOOL BOX	1
11	LBFJA197	LINK 197MM	2
12	LBFJA171	LINK 171MM	2
13	CBBZJ000	LIFTING LUG	4
14	CJAZG000	GUSSET 12MM	8
15	CABGG003	GUSSET 12MM	4
16	GNBEF000	DEPTH GAUGE S24-100	1
17	CBBHJ002	ADJUST LUG (SMALL)	1
18	FEBJA110	BOLT M20	3
19	FFAJA000	NUT BLACK M20	3
20	CBBHJ000	REAR PIVOT	1
21	FUBKA000	PLUG 3" GALVINIZED	1
22	CBBHJ001	ADJUST LUG (LARGE)	3
23	CBBHM000	PIVOT LUG	3

NOTE: * CHANGE HAS BEEN MADE REFER TO MASTER FILE



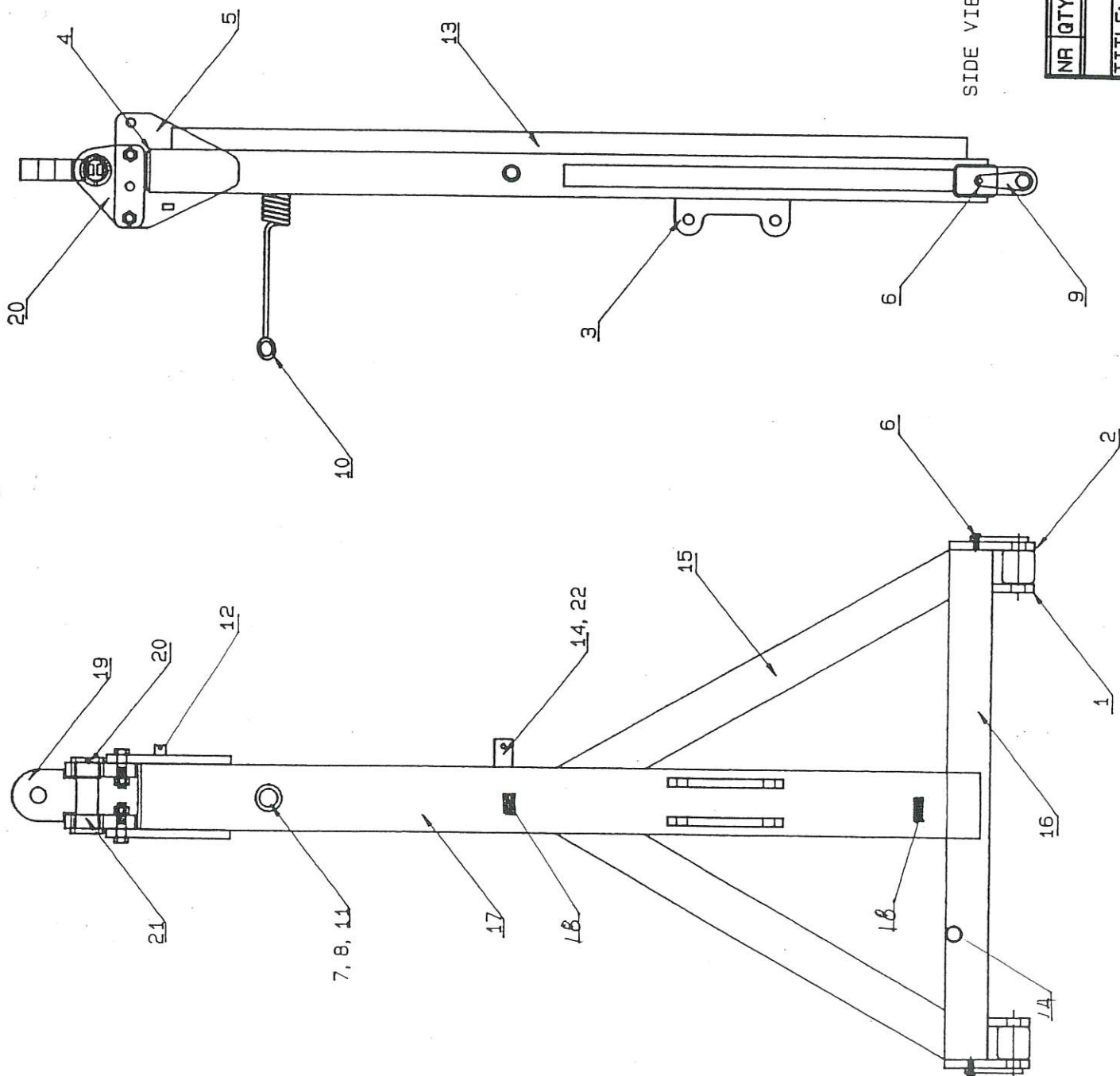
5

GRIZZLY ENGINEERING PTY. LTD
TITLE: HEAVY 32-48 PLATE FRAME
PART NO.
SCALE: 1: 26.63 DATE: 19-9-89 DRG NO: GCHP24A

HEAVY SERIES H32-48 PLATE

PULL ASSEMBLY GHGA0000

NO.	PART NO.	DESCRIPTION	QTY.
1	CBCFJ000	PULL BACK LUG INNER	2
2	CBCFJ001	PULL LUG OUTER	2
3	CBCFJ002	LEVEL LUG PULL	2
4	CFBFE000	END PLATE	1
5	CGCFJ000	PULL SIDE PLATE	2
6	FABGA025	BOLT M12	2
7	FABJA045	BOLT M20	1
8	FFBJA000	NUT NYLOC M20	1
9	FGBPA135	PULL PIN	2
10	FHKNA440	SPRING HOSE HOLDER	1
11	FMAJEO00	F/WASHER 20 ID X 40 OD	2
12	MAEEA025A	FLAT 25 X 10	1
13	MAEHB950	FLAT 50 X 10	2
14	MECFA065A	PIPE	2
15	MHHGB050	RHS	2
16	MHHHB200	RHS	2
17	MHKPB950	PULL BEAM (RHS)	1
18	HJBHA000	BASE PLATE FOR 3/4 HYD HOSE	1
19	GPEBA000	PULL TONGUE FLOPPY 40MM X 70MM	2
20	GNDMF001	S PULL SIDE PLATE RIGHT	1
21	GNDMF000	S PULL SIDE PLATE LEFT	1
22	GKFE0000	"S" PARKING JACK	1



SIDE VIEW

TOP VIEW

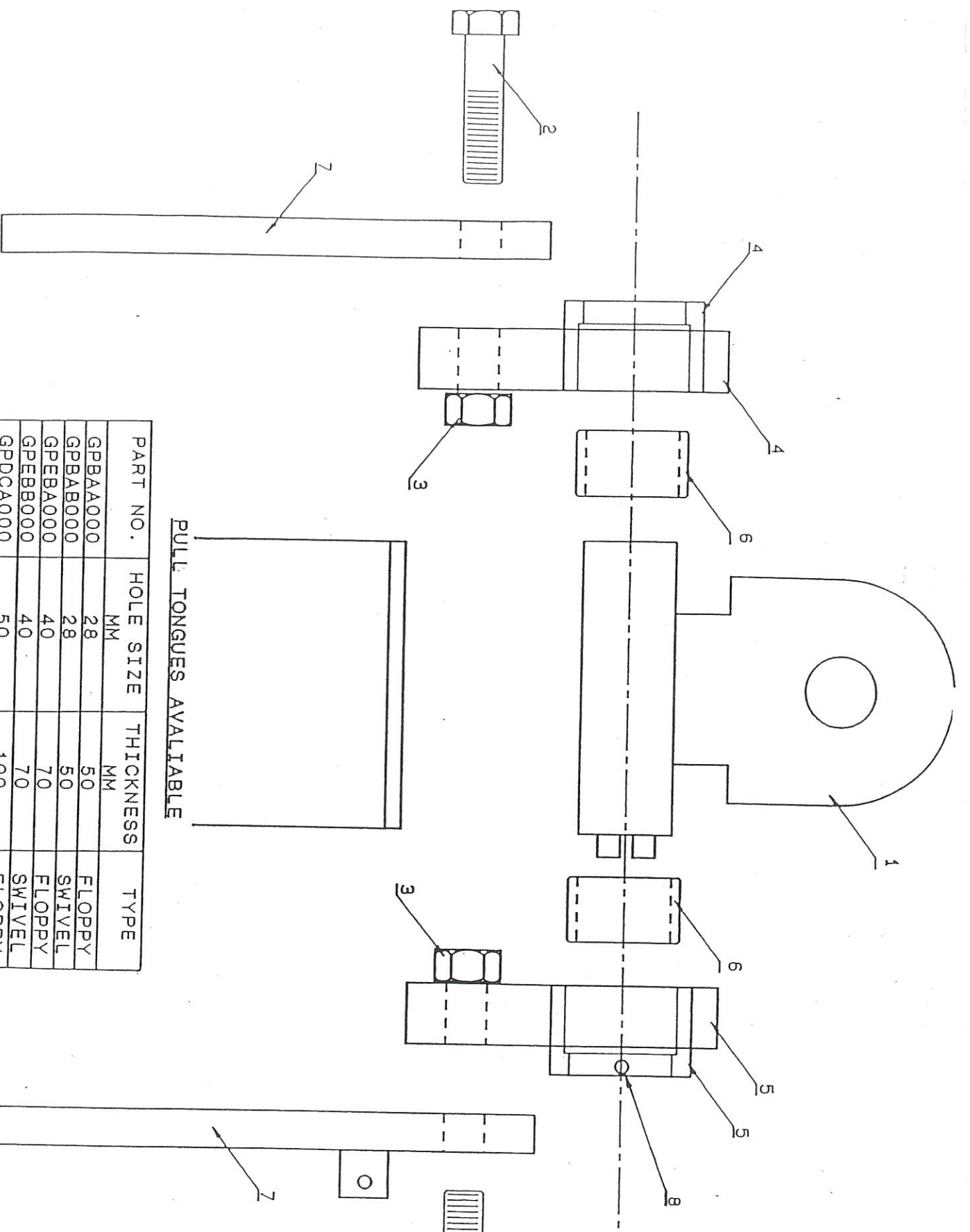
NR	QTY	PART, MATERIAL	DIMENSIONS	PART NO.
GRIZZLY ENGINEERING PTY				
TITLE: PULL ASSY HEAVY				
PART NO GHGA0000				
SCALE 1:10				
DATE: 23 8 80				
DRAWN BY: CH2100000				

7

"H" SERIES

PULL TONGUE AND SIDE PLATES - GPB000000

<u>NO.</u>	<u>PART NO.</u>	<u>DESCRIPTION</u>	<u>QTY.</u>
1	GPBEA000	FLOPPY PULL TONGUE 40 X 70MM	1
2	FABJA080	M20 BOLT	4
3	FFBJA000	M20 NYLOC NUT	4
4	GNDMF000	"S" PULL SIDE PLATE ASSY LEFT	1
5	GNDMF001	"S" PULL SIDE PLATE ASSY RIGHT	1
6	BJEGA035	VESCONITE BUSH	2
7	CGCFJ000	PULL SIDE PLATE	2
8	FKBCA000	R CLIP (HAIR PIN)	1



PULL TONGUES AVAILABLE

PART NO.	HOLE SIZE MM	THICKNESS MM	TYPE
GPBAA000	28	50	FLOPPY
GPBAB000	28	50	SWIVEL
GPBEA000	40	70	FLOPPY
GPEBB000	40	70	SWIVEL
GPDCA000	50	100	FLOPPY
GPDCB000	50	100	SWIVEL

NR QTY	PART MATERIAL	DIMENSIONS	PART NO.
GRIZZLY ENGINEERING PTY			
PULL TONGUE SSIDE PLATES			

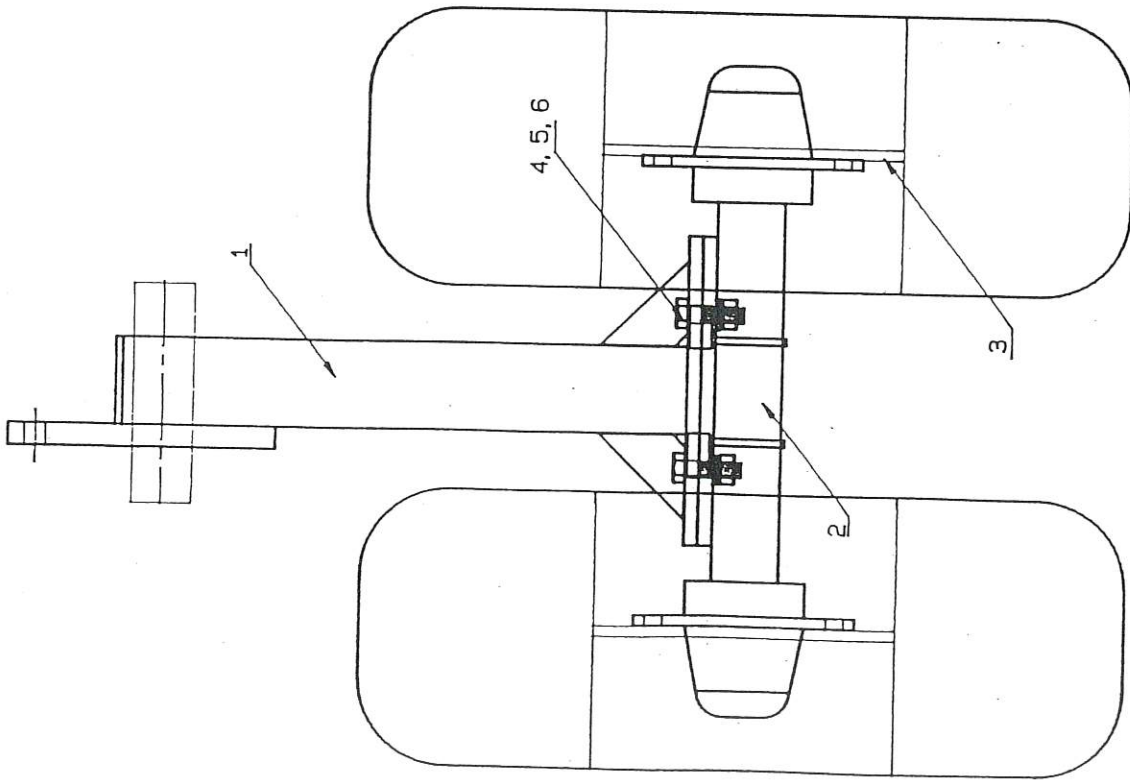
HEAVY SERIES H32-40 PLATE

WHEEL ASSEMBLY

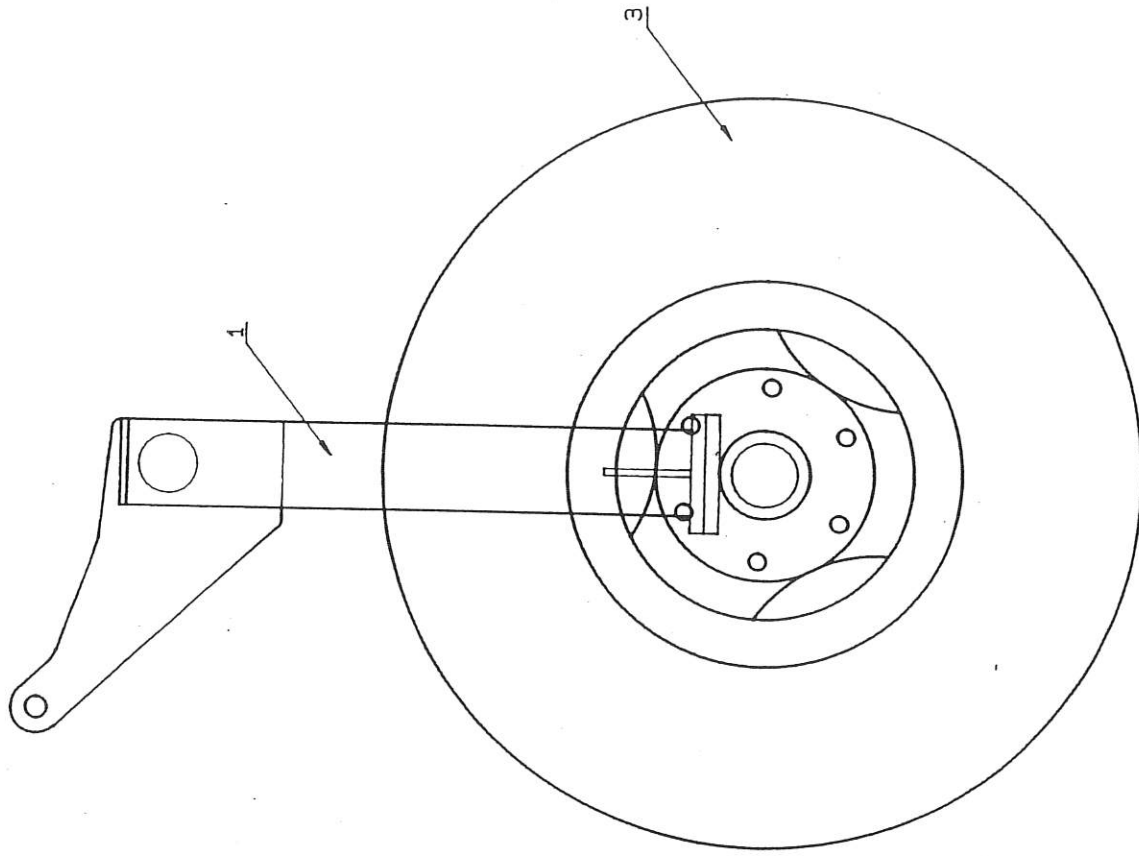
<u>NO.</u>	<u>PART NO.</u>	<u>DESCRIPTION</u>	<u>QTY.</u>
1	GJHA0001	WHEEL LIFT ASSEMBLY	1
2	* WMNAA740	H70 HUB & STUB ASSEMBLY	1
3	WSMEEC00	H70 RING & TYRE ASSY 11.00 X 16	2
4	FABJA065	BOLT M20	4
5	FFBJA000	NUT NYLOC M20	4
6	FMCJG000	WASHER 20 ID X 40 OD	4

NOTE: * CHANGE HAS BEEN MADE. REFER TO MASTER FILE

Sum WEM Jx000, 10000 x 16 H70.



BACK ELEVATION



SIDE VIEW

WHEEL ASSY.

"S" SERIES HG32-40 PLATE

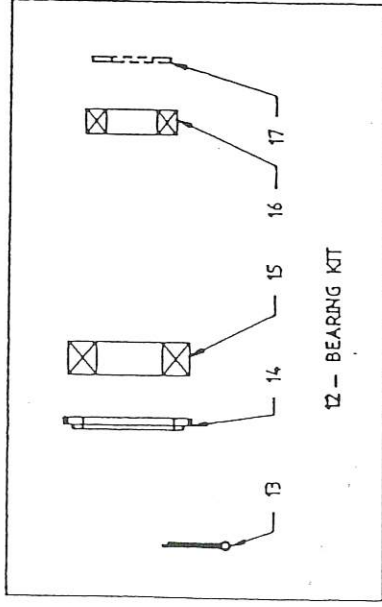
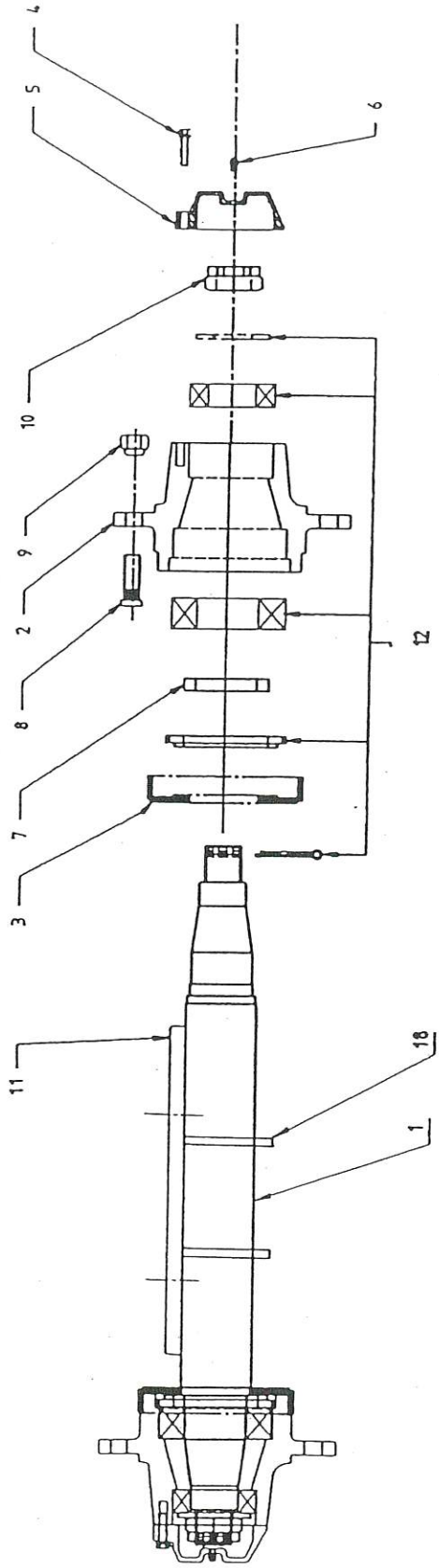
H70 HUB & STUB ASSEMBLY (NEW) - WMNAA000

<u>NO.</u>	<u>PART NO.</u>	<u>DESCRIPTION</u>	<u>QTY.</u>
1	WAMBA740	H70 STUB AXLE	1
2	WJMAA000	H70 HUB	2
3	BNMAA001	DUST COVER ASSEMBLY	2
4	FEBEA030	CAP SCREW M8	6
5	WKMAA001	H70 CAP	2
6	BMAAA000	GREASE NIPPLE	2
7	BSNNA013	BUSH HUB	2
8	FDBJA000	H70 WHEEL STUD <i>18X50</i>	2
9	FFFJA000	H70 WHEEL NUT	12
10	FFCTA000	H70 AXLE NUT	2
11	CGEFH000	AXLE BASE PLATE	1
12	BAMAA001	H70 BEARING KIT	2
13	FKCEA063	SPLIT PIN	2
14	BNMBA001	H70 BEARING SEAL	2
15	BBMAA000	H70 BEARING LARGE	2
16	BCMAA000	H70 BEARING SMALL	2
17	FMAUJT00	FLAT WASHER	2
18	CAEGE000	GUSSET	2

NOTE:

*

CHANGE HAS BEEN MADE. REFER TO MASTER FILE



13

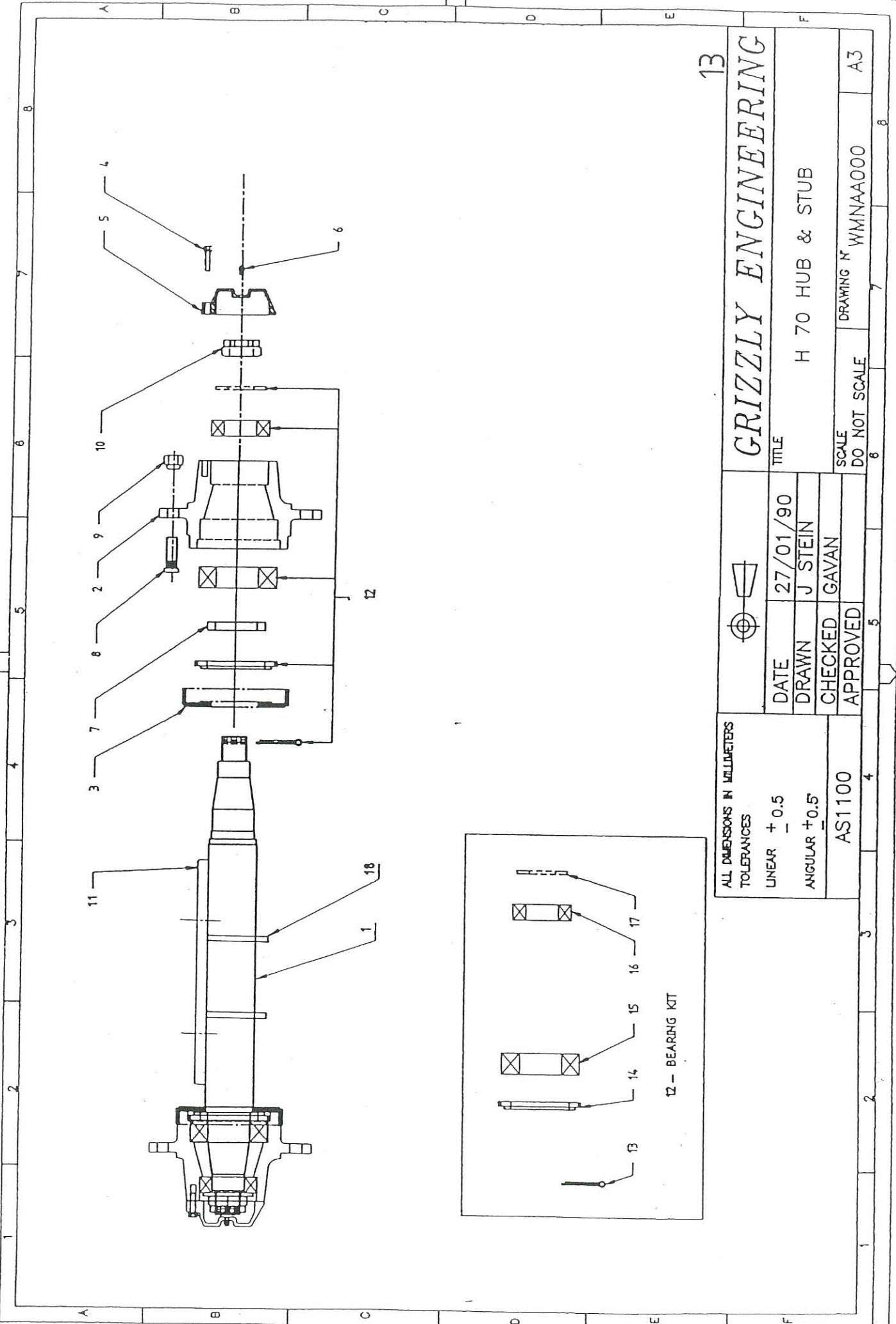
GRIZZLY ENGINEERING

H 70 HUB & STUB

SCALE DO NOT SCALE DRAWING N° WMNAA000 A3

DATE 27/01/90
 DRAWN J STEIN
 CHECKED GAVAN
 APPROVED

ALL DIMENSIONS IN MILLIMETERS
 TOLERANCES
 LINEAR + 0.5
 ANGULAR + 0.5
 AS1100

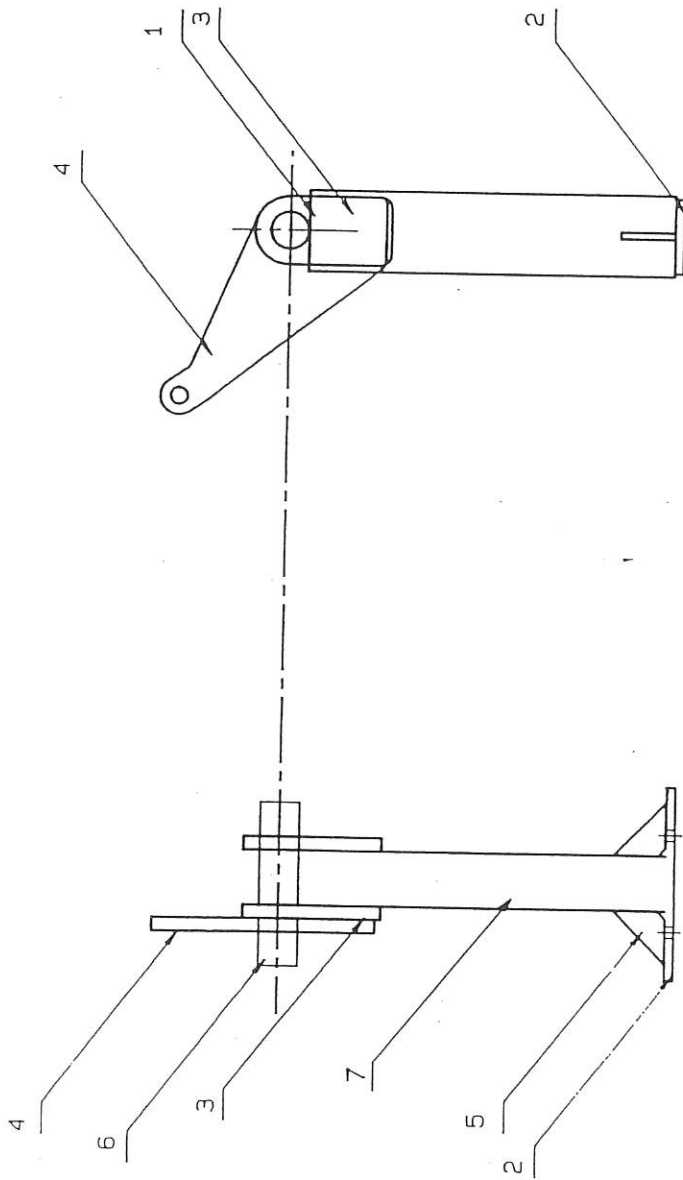


HEAVY SERIES

WHEEL LIFT ASSEMBLY LEFT - GJHA0002

<u>NO.</u>	<u>PART NO.</u>	<u>DESCRIPTION</u>
1	CFBFE000	END CAP 8MM
2	CGEFH000	AXLE BASE PLATE 16MM
3	CGEHM000	BUILD PLATE
4	CGEHM001	WHEEL ASSY LIFTING ARM
5	CJAZG000	GUSSET
6	MDDJA305	ROUND
7	MHKPA662	WHEEL ASSY LEG

NOTE: - GHGA0002 WHEEL LIFT ASSEMBLY LEFT IS A MIRROR IMAGE OF
GHGA0001 WHEEL LIFT ASSEMBLY RIGHT.



ELEVATION

SIDE VIEW

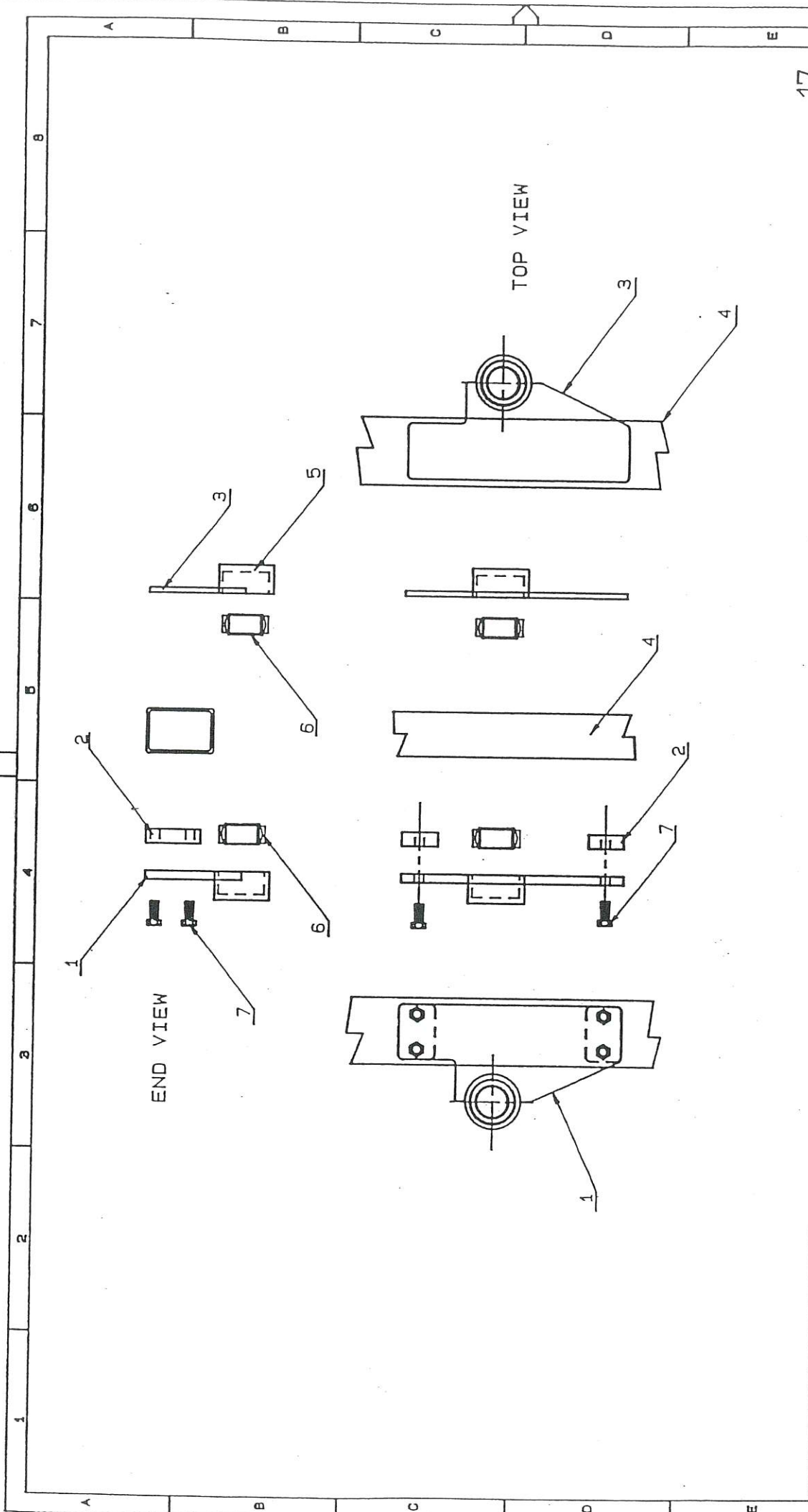
15

NR	QTY	PART, MATERIAL	DIMENSIONS	PART NO.
GRIZZLY ENGINEERING PTY				
TITLE: WHEEL ASSY. "H" SERIES				
PART NO GJHA0001				
SCALE 1:10			DATE: 24.8.89	DRG NO. GJHA0001

HEAVY SERIES HG48 PLATE FOLDING
WHEEL LIFT SIDE PLATE ASSEMBLY

<u>NO.</u>	<u>PART NO.</u>	<u>DESCRIPTION</u>	<u>QTY.</u>
1	GJHB0000R	W/A SIDE PLATE ASSY INNER (RIGHT)	1
2	CCEFP000	W/A SPACER BLOCKS	2
3	GJHB0001R	W/A SIDE PLATE ASSY OUTER (RIGHT)	1
4	MHHND600	MAIN FRAME BEAM	1
5	MFWYA065A	BALL BUSH HOUSING	2
6	BDMZA000	BALL BUSHING	2
7	FABJA045	BOLT M20	4

NOTE:
 GJHB0000L - W/A SIDE PLATE ASSY INNER LEFT.
 GJHB0001L - W/A SIDE PLATE ASSY OUTER LEFT.
 LEFT AND RIGHT SPECIFY WHICH SIDE OF THE MACHINE THE
 WHEEL ASSEMBLY IS LOCATED.



17

GRIZZLY ENGINEERING.

TITLE: WHEEL ASSY. SIDE PLATE BEARING ASSY.

DRAWN: G. BAILEY
 CHECKED: -----
 APPROVED: -----

DATE: 27-6-90

SCALE: NO SCALE

DRAWING NO.: SIDEASSY A3

ALL DIMENSIONS IN MILLIMETERS.
 TOLERANCES:
 LINEAR ± 0.8
 ANGULAR ± 0.8

AS1100

ISSUE	DATE	ISSUE	BY	CKD
		CHANGE		
AMENDMENTS.				
1		2	3	4

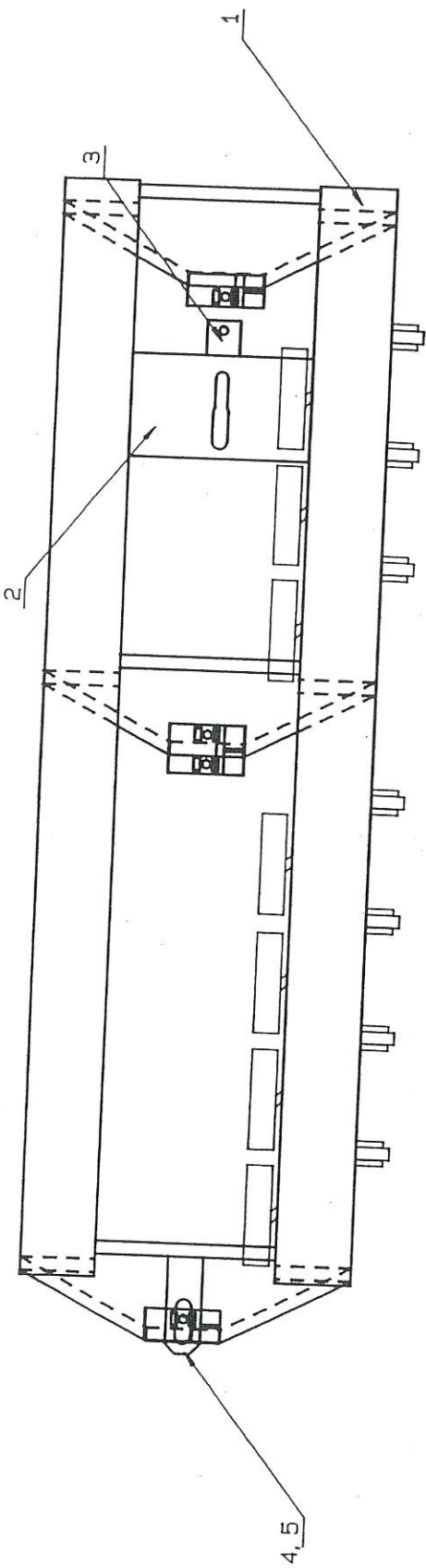
HEAVY SERIES H32-48/ROWCROPPER

GANG NO. 1 ASSEMBLY - H36G1

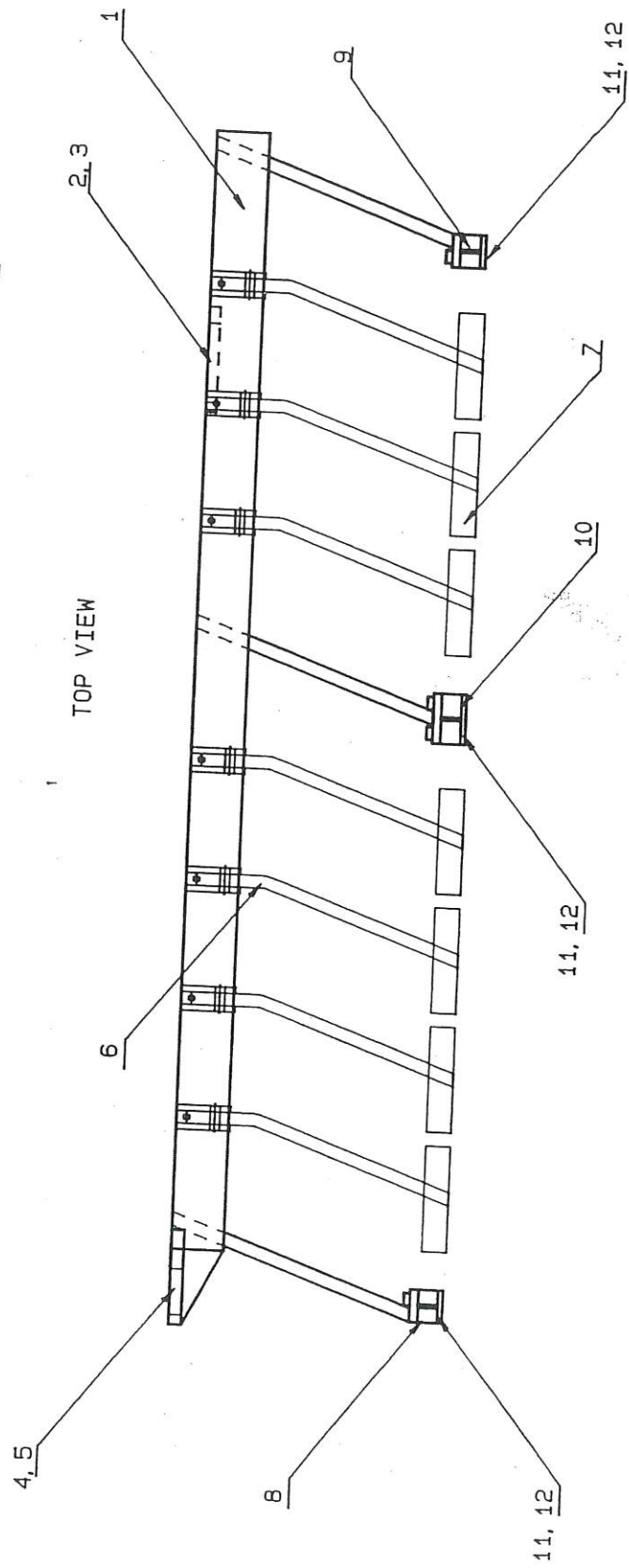
<u>NO.</u>	<u>PART NO.</u>	<u>DESCRIPTION</u>
1	H36G1	GANG FRAME
2	LAEJA105	SLOT 105MM
3	MAHJA070B	GANG ADJUST LUG
4	CAAHG001	PIVOT LUG GUSSET
5	CBAHM000	PIVOT LUG
6	GFHAA210	SCRAPER ASSEMBLY HEAVY LEFT
7	MCCHA210	SCRAPER PAD
8	GEGDA000	AXLE CARRIER SINGLE LEFT
9	GEGEA000	AXLE CARRIER SINGLE RIGHT
10	GEGBA000	AXLE CARRIER DOUBLE
11	FABHA085	BOLT M16
12	FFBHA000	NUT NYLOC M16

NOTE:

- * GFJAA250 SCRAPER ASSEMBLY LEFT-ROWCROPPER
- * MCDNA250 SCRAPER PAD-ROWCROPPER



TOP VIEW



BACK ELEVATION

GRIZZLY ENGINEERING PTY. LTD	
TITLE: GANG ASSY "H" 36 NO. 1	
PART NO.	
SCALE: 1:10	DATE: 13-9-89
DRG NO: H36G1	

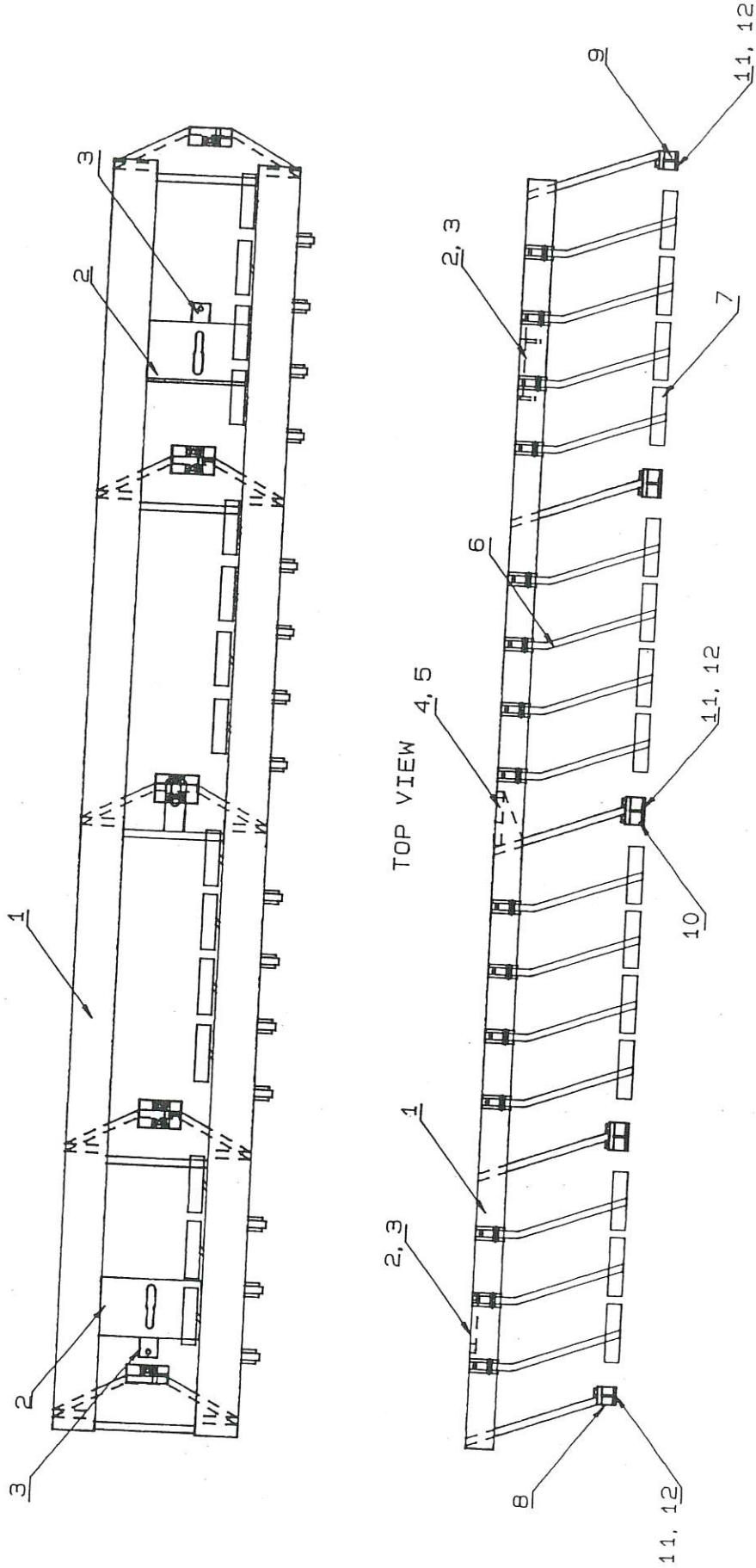
HEAVY SERIES H32-48/ROWCROPPER

GANG NO. 2 ASSEMBLY - H24G2

<u>NO.</u>	<u>PART NO.</u>	<u>DESCRIPTION</u>
1	H24G2	GANG FRAME
2	LAEJA105	SLOT 105MM
3	MAHJA070B	GANG ADJUST LUG
4	CAAHG001	PIVOT LUG GUSSET
5	CBAHM000	PIVOT LUG
6	*GFHBA210	SCRAPER ASSEMBLY HEAVY RIGHT
7	*MCCHA210	SCRAPER PAD
8	GEGDA000	AXLE CARRIER SINGLE LEFT
9	GEGEA000	AXLE CARRIER SINGLE RIGHT
10	GEGBA000	AXLE CARRIER DOUBLE
11	FABHA085	BOLT M16
12	FFBHA000	NUT NYLOC M16

NOTE:

- * GFJBA250 SCRAPER ASSEMBLY RIGHT-ROWCROPPER
- * MCDNA250 SCRAPER PAD-ROWCROPPER



21

GRIZZLY ENGINEERING PTY. LTD

TITLE: HEAVY 36 PLATE GANG NO.2

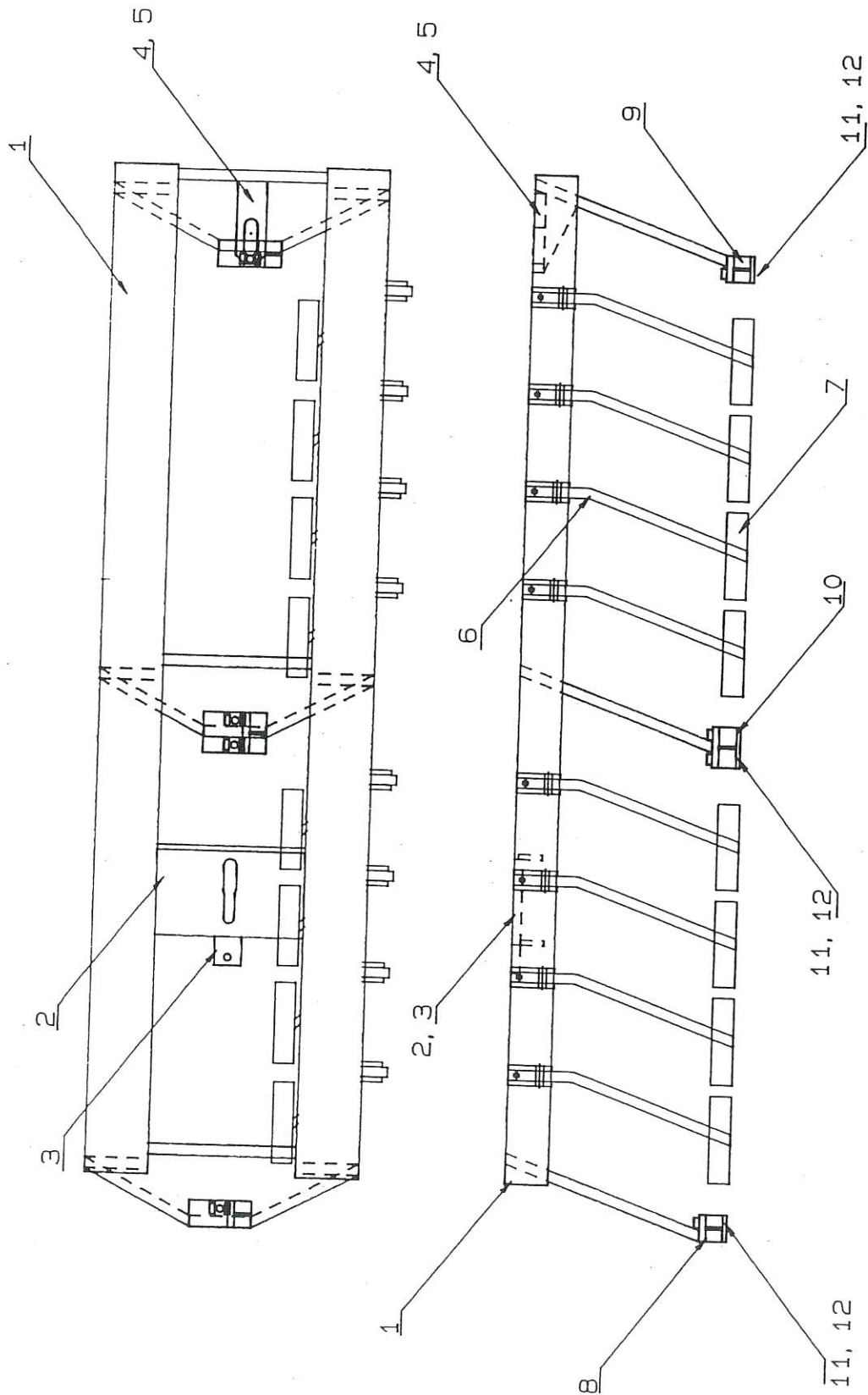
PART NO.

SCALE: 1: 16.66 DATE: 21-9-89 DRG NO: H3602

HEAVY SERIES G32-48/ROWCROPPER
GANG NO. 3 ASSEMBLY - H24G3

<u>NO.</u>	<u>PART NO.</u>	<u>DESCRIPTION</u>
1	H24G3	GANG FRAME
2	LAEJA105	SLOT 105MM
3	MAHJA070B	GANG ADJUST LUG
4	CAAHG001	PIVOT LUG GUSSET
5	CBAHM000	PIVOT LUG
6	GFHAA210	SCRAPER ASSEMBLY HEAVY LEFT
7	MCCHA210	SCRAPER PAD
8	GEGDA000	AXLE CARRIER SINGLE LEFT
9	GEGEA000	AXLE CARRIER SINGLE RIGHT
10	GEGBA000	AXLE CARRIER DOUBLE
11	FABHA085	BOLT M16
12	FFBHA000	NUT NYLOC M16
	* GFJAA250	SCRAPER ASSEMBLY LEFT-ROWCROPPER
	* MCDNA250	SCRAPER PAD-ROWCROPPER

NOTE:



23

GRIZZLY ENGINEERING PTY. LTD
 GANG ASSY "H" 36 NO.3

PART NO.

SCALE: 1:11

DATE: 14-9-89

DRG NO: H36G3

GANG AXLES USED - ROWCROPPER

NO OF DISCS	PART NO.	
	2 HOLES	1 HOLE
3	MJAMA878A	MJAMA859A
4	MJAMB172A	MJAMB153A
5	MJAMB466A	MJAMB447A
6	MJAMB760A	
7	MJAMC054A	

"H" SERIES

GANG ASSEMBLY, ROWCROPPER

DESCRIPTION

NO.	PART NO.	DESCRIPTION
1	FAAJB550	6 DISC GANG BOLT M20
2	GEGDA000	AXLE CARRIER SINGLE LEFT
3	MGGFA004	4MM SPACER
4	FHCPA035	GANG SPRING
5	BNTAA001	DUST COVER SERIES II
6	BPBBA000	GANG BEARING 38 X 100 SPHERICAL
7	BGB100B1	LEAD BEARING HOUSING SERIES II
8	BHB100B1	THRUST BEARING HOUSING SERIES II
9	D28FSB02	DISC 28" X 10mm
10	MEGRA285	230MM SPOOL
11	CBAFM000	AXLE CARRIER KISSING

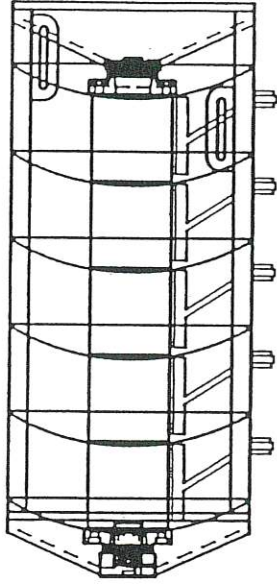
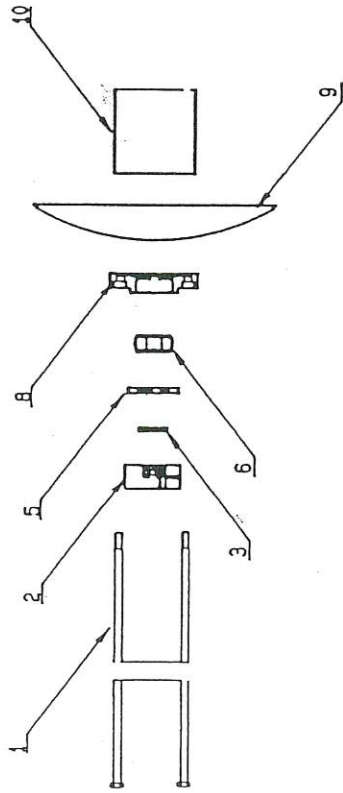
GANG BOLTS USED - ROWCROPPER

NO OF DISCS	PART NO.
3	FAAJA670
4	FAAJA970
5	FAAJB260
6	FAAJB550
7	FAAJB844

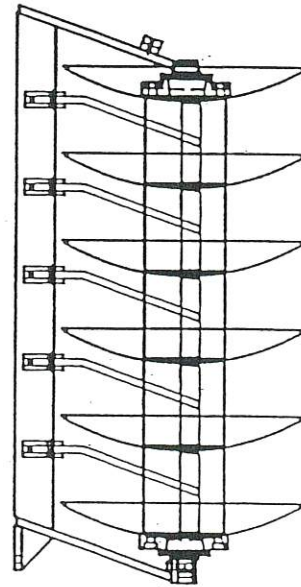
NOTE: - SERIES I BEARING HOUSINGS AND DUST COVER LISTED BELOW.

- BGB100B0 LEAD BEARING HOUSING, SERIES I
- BHB100B0 THRUST BEARING HOUSING, SERIES I
- BNTAA000 DUST COVER WITH NEOPRENE INSERT, SERIES I
- FOR MORE INFORMATION ON BEARING HOUSING ASSEMBLIES REFER TO THE MASTER FILE

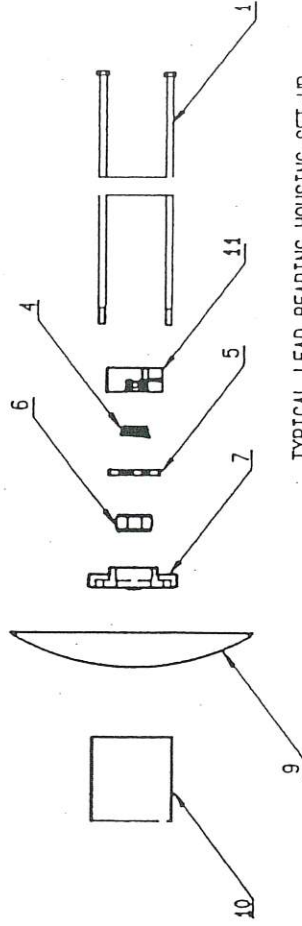
TYPICAL THRUST BEARING HOUSING SET-UP
ON "S" SERIES MACHINES.



TOP VIEW



BACK ELEVATION



TYPICAL LEAD BEARING HOUSING SET-UP
ON "S" SERIES MACHINE.

GRIZZLY ENGINEERING PTY. LTD

TITLE: GANG ASSY "S" 48-64 NO.2

PART NO.

DATE: 1.11.64

GANG AXLES USED

"H" SERIES H32-40

GANG ASSEMBLY

NO. OF DISC	PART NO.	
	2 HOLES	1 HOLES
3	MJAMA707A	MJAMA688
4	MJAMA944A	MJAMA925A
5	MJAMB181A	MJAMB162A
6	MJAMB418A	MJAMB399A
7	MJAMB655A	MJAMB636A
8	MJAMB892A	MJAMB873

NO. PART NO.

DESCRIPTION

1 FAAJB550 6 DISC GANG BOLT M20
 2 GEGDA000 AXLE CARRIER SINGLE LEFT
 3 MGGFA004 4MM SPACER
 4 FHCPA035 GANG SPRING
 5 BNTAA000 DUST COVER SERIES II
 6 BPBBA000 GANG BEARING 38 X 100 SPHERICAL
 7 BGB100B1 LEAD BEARING HOUSING SERIES II
 8 BHB100B1 THRUST BEARING HOUSING SERIES II
 9 D28FSSB02 THRUST BEARING HOUSING SERIES II
 10 MEGRA285 DISC 28" X 10mm
 11 CBAFM000 285MM SPOOL AXLE CARRIER KISSING

GANG BOLTS USED

NO. OF DISC	PART NO.	PART NO.
3	FAAJA550	M20
4	FAAJA790	
5	FAAJB020	
6	FAAJB260	
7	FAAJB490	
8	FAAJB730	

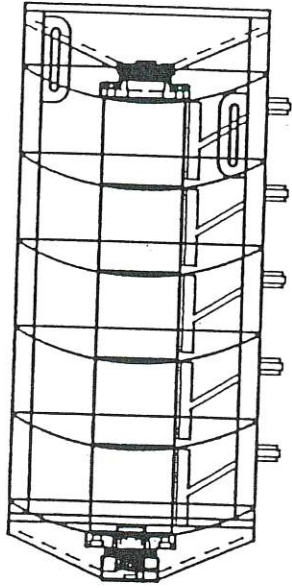
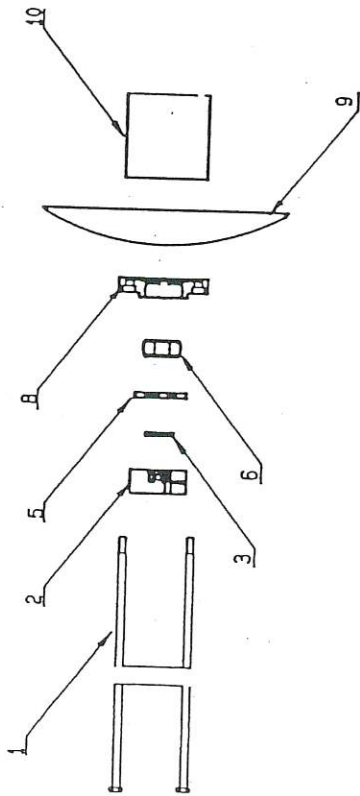
NOTE: - SERIES I BEARING HOUSINGS AND DUST COVER LISTED BELOW.

- BGB100B0 LEAD BEARING HOUSING, SERIES I
- BHB100B0 THRUST BEARING HOUSING, SERIES I
- BNTAA000 DUST COVER WITH NEOPRENE INSERT, SERIES I

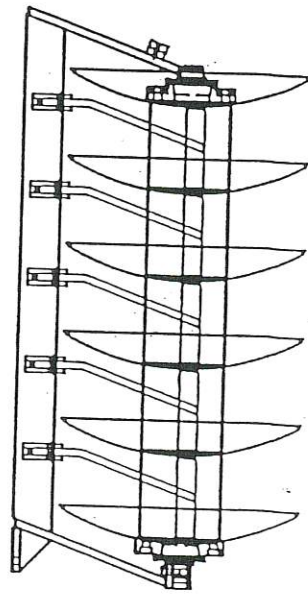
- FOR MORE INFORMATION ON BEARING HOUSING ASSEMBLIES REFER TO THE MASTER FILE

NOTE: ROWCROPPER GANG ASSEMBLY IS ON NEXT PAGE.

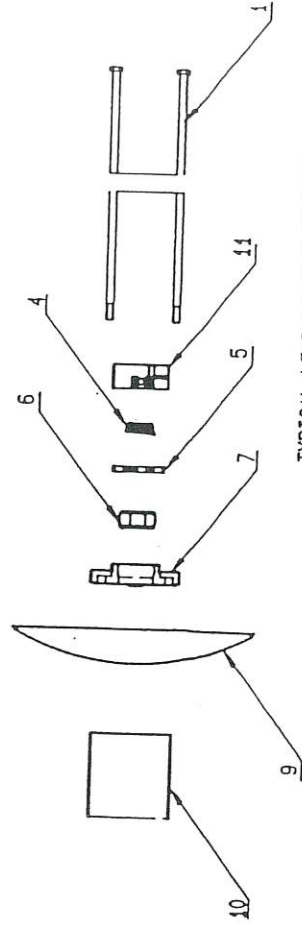
TYPICAL THRUST BEARING HOUSING SET-UP
ON "S" SERIES MACHINES.



TOP VIEW



BACK ELEVATION



TYPICAL LEAD BEARING HOUSING SET-UP
ON "S" SERIES MACHINE.

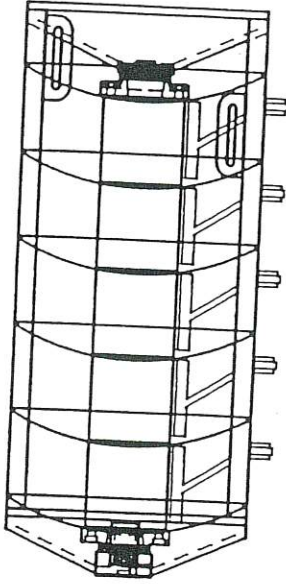
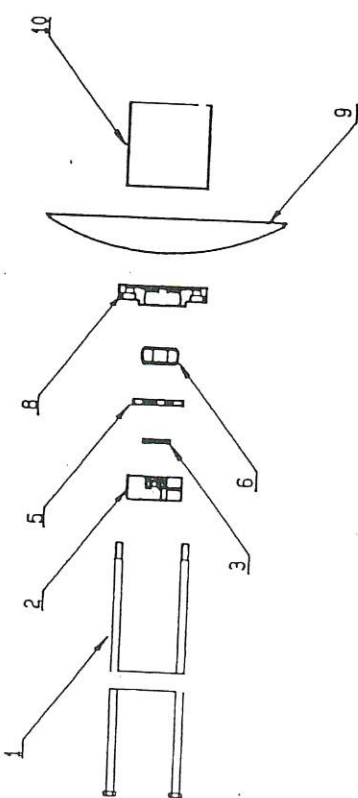
HEAVY SERIES H32-40 PLATE

SCRAPER ASSEMBLY LEFT HEAVY - GFHAA210

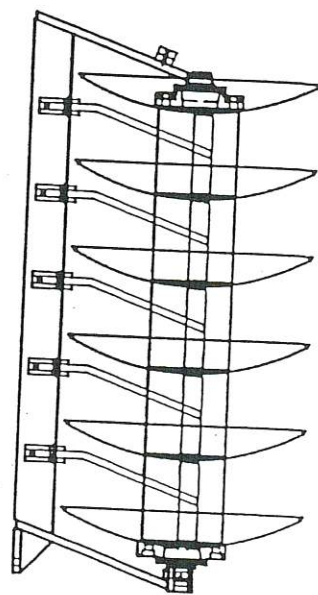
<u>NO.</u>	<u>PART NO.</u>	<u>DESCRIPTION</u>
1	GFHAA210	SCRAPER ASSEMBLY LEFT
2	MCCHA210	SCRAPER PAD
3	FEBEA035	SET SCREW M8
4	CBAGG000	SCRAPER LUG
5	FABHA070	BOLT M16
6	FFBHA000	NYLOC NUT M16
7	FFAEA000	BLACK NUT M8

NOTE:
GFHBA210 - SCRAPER ASSEMBLY RIGHT. HEAVY.
GFJAA250 - SCRAPER ASSEMBLY LEFT. ROWCROPPER
GDJBA250 - SCRAPER ASSEMBLY RIGHT. ROWCROPPER
MCDNA250 - SCRAPER PAD ROWCROPPER

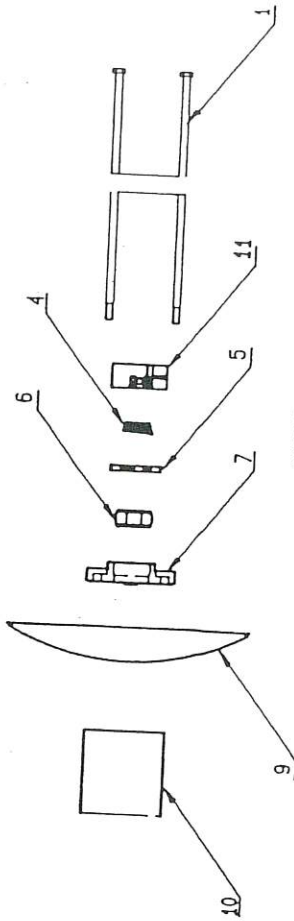
TYPICAL THRUST BEARING HOUSING SET-UP
ON "S" SERIES MACHINES.



TOP VIEW



BACK ELEVATION



TYPICAL LEAD BEARING HOUSING SET-UP
ON "S" SERIES MACHINE.

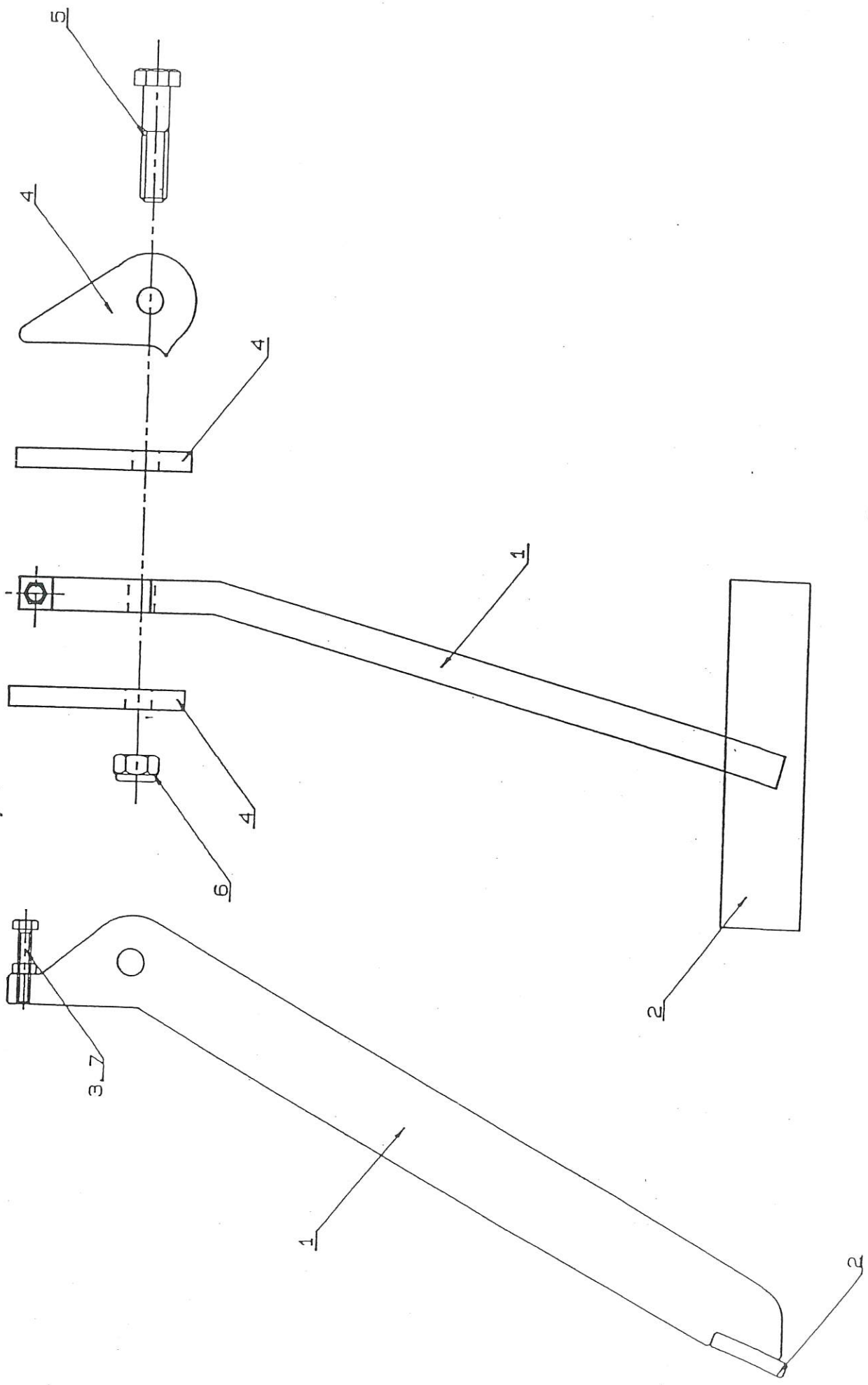
GRIZZLY ENGINEERING PTY. LTD
GANG ASSY "S" 48-64 NO.2
PART NO.
SCALE: 1:14 R DATE: 1 0 80 INDG NO. 81000

HEAVY SERIES H48 PLATE
SCRAPER ASSEMBLY LEFT HEAVY - GFHAA210

<u>NO.</u>	<u>PART NO.</u>	<u>DESCRIPTION</u>
1	GFHAA210	SCRAPER ASSEMBLY LEFT
2	MCCHA210	SCRAPER PAD
3	FEBEA035	SET SCREW M8
4	CBAGG000	SCRAPER LUG
5	FABHA070	BOLT M16
6	FFBHA000	NYLOC NUT M16
7	FFAEA000	BLACK NUT M8

NOTE:

GFHBA210 - SCRAPER ASSEMBLY RIGHT. HEAVY.
 GFJAA250 - SCRAPER ASSEMBLY LEFT. ROWCROPPER
 GDJBA250 - SCRAPER ASSEMBLY RIGHT. ROWCROPPER
 MCDNA250 - SCRAPER PAD ROWCROPPER



31

GRIZZLY ENGINEERING PTY. LTD	
TITLE: SCRAPER ASSEMBLY LEFT HEAVY	
PART NO GFHAA210	
SCALE: 1:2.31	DATE: 26.10.89
DRG NO: CGFFJ000	

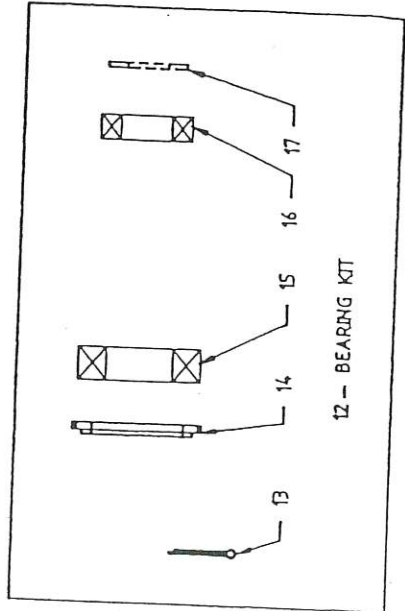
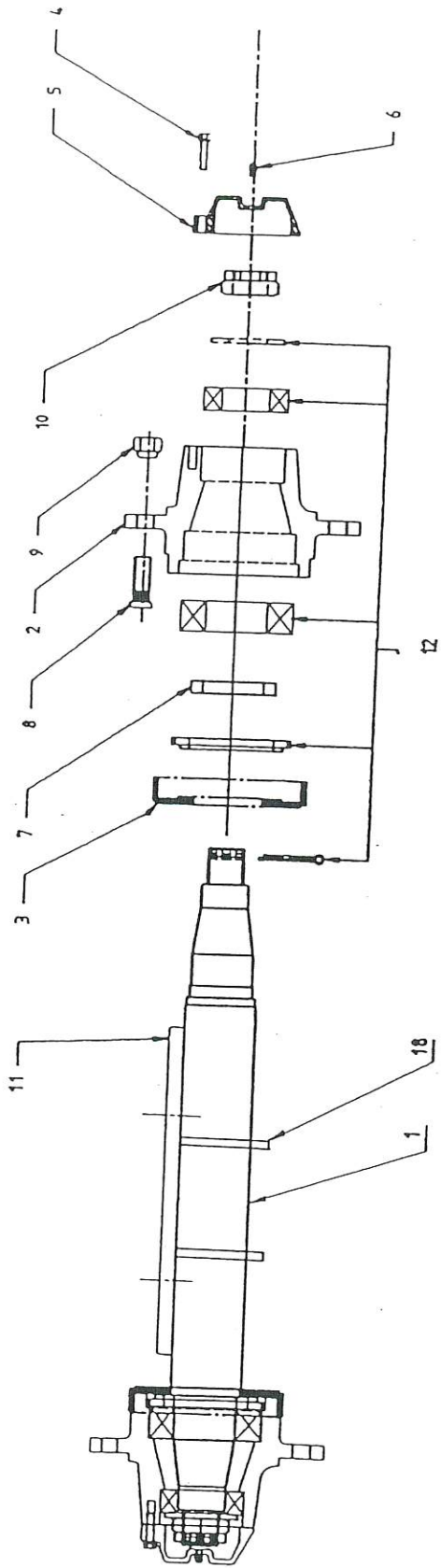
HEAVY SERIES HG48 PLATE

"S" FOLDING PULL OPTIONS (SFPULL)

<u>NO.</u>	<u>PART NO.</u>	<u>DESCRIPTION</u>
1	GDFE0000	LEVELLING ROD
2	GDFE0001	LOCK UP ASSEMBLY - (LEVELLING ROD)
3	GDFG0000	HYDRAULIC PITCH CONTROL
4	GDFE0002	LOCK UP ASSEMBLY - (HYD PITCH CONTROL)
5	GDFJA000	HYDRAULIC ACCUMULATOR
6	GKFA0001	SWIVEL ASSEMBLY "S" M24 BOLTS
7	CBBFJ000	TOP LEVEL LUG
8	MAGPA135	FLAT

NOTE: GKFA0000 SWIVEL ASSEMBLY TO SUIT MACHINES PRE SERIAL NO. 487 (M20 BOLTS).

CBBFJ001 TOP LEVEL LUG TO SUIT MACHINES PRE SERIAL NO. 487 (M20 BOLTS).



23

GRIZZLY ENGINEERING

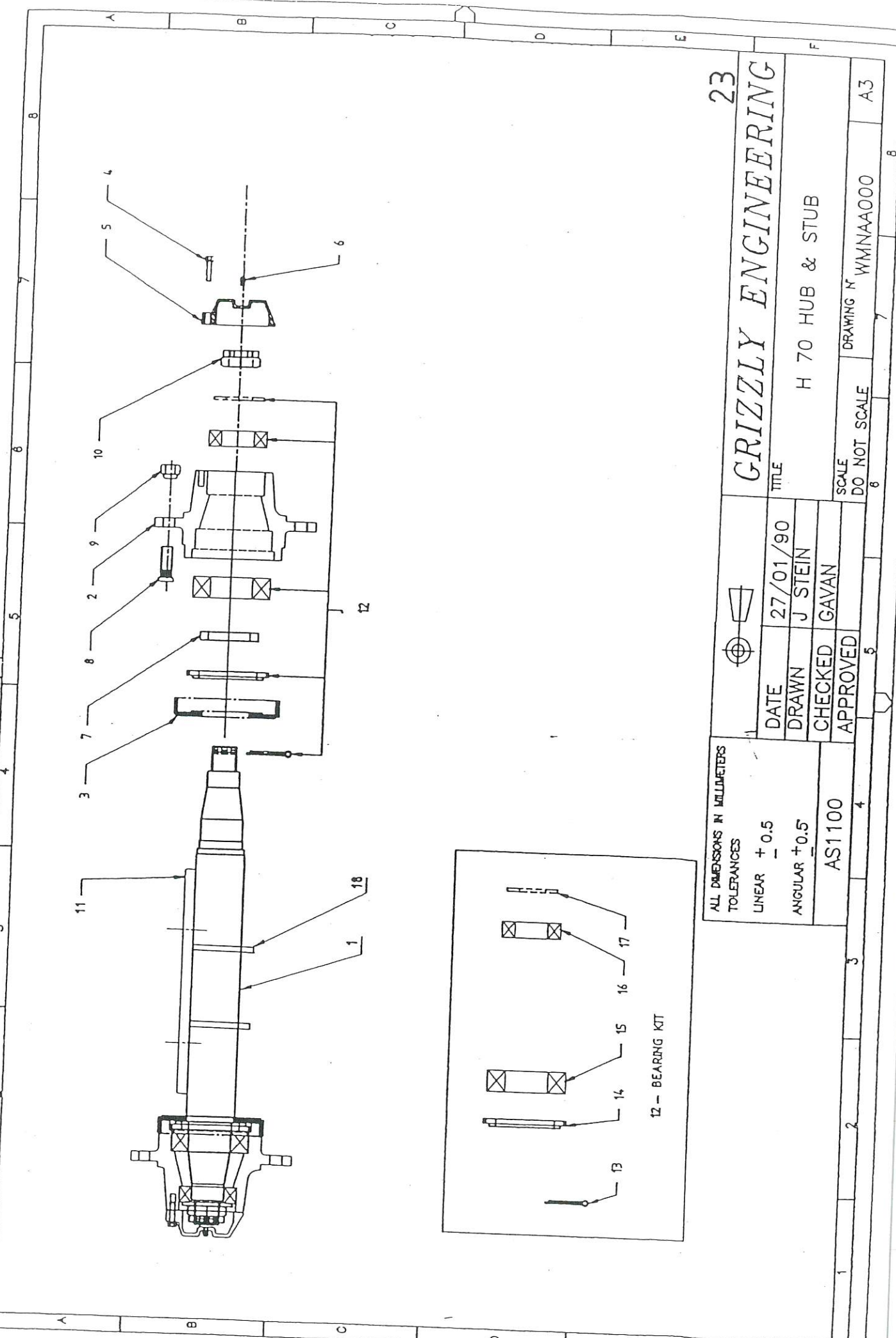
H 70 HUB & STUB

DRAWING N° WMNAA000

DATE 27/01/90
 DRAWN J STEIN
 CHECKED GAVAN
 APPROVED

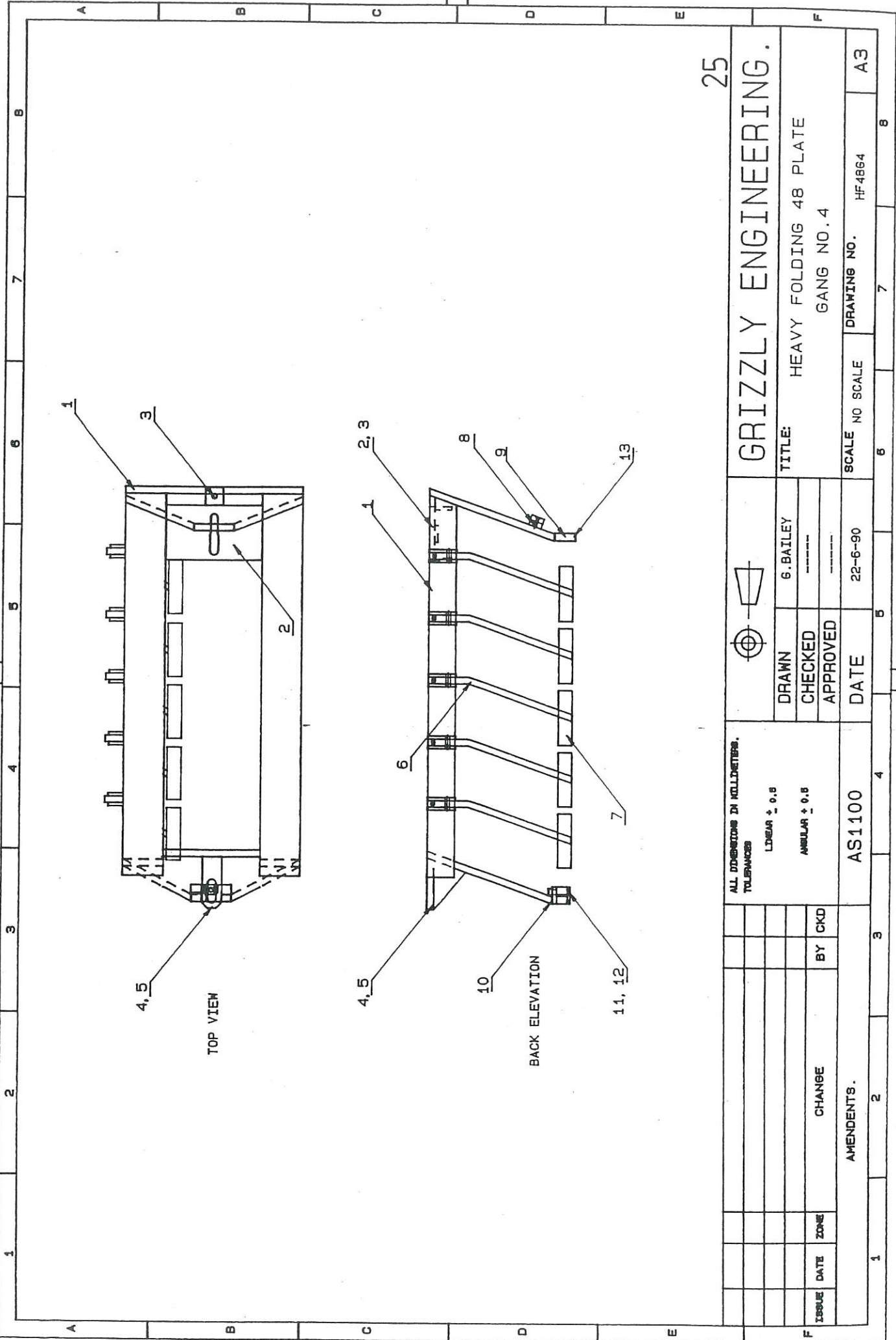
ALL DIMENSIONS IN MILLIMETERS
 TOLERANCES
 LINEAR ± 0.5
 ANGULAR ± 0.5
 AS1100

SCALE DO NOT SCALE
 DRAWING N° WMNAA000



HEAVY SERIES H48 PLATE FOLDING
GANG ASSEMBLY NO.4

<u>NO.</u>	<u>PART NO.</u>	<u>DESCRIPTION</u>
1	H48G4	GANG FRAME
2	LAEJA105	SLOT 105MM
3	MAHJA070B	GANG ADJUST LUG
4	CAAHG001	PIVOT LUG GUSSET
5	CBAHM000	PIVOT LUG
6	GFHAA210	SCRAPER ASSEMBLY HEAVY LEFT
7	MCCHA210	SCRAPER PAD
8	GNABG000	SPACER BLOCK ASSEMBLY
9	CBAFM000	AXLE CARRIER KISSING
10	GEGDA000	AXLE CARRIER SINGLE LEFT
11	FABHA085	BOLT M16
12	FFBHA000	NUT NYLOC M16
13	FABGA065A	BOLT M12 WITH HOLE



25

GRIZZLY ENGINEERING.

TITLE: HEAVY FOLDING 48 PLATE GANG NO.4



6. BAILEY
 DRAWN
 CHECKED
 APPROVED

ALL DIMENSIONS IN MILLIMETERS.
 TOLERANCES
 LINEAR ± 0.8
 ANGULAR ± 0.8

DATE 22-6-90
 AS1100

ISSUE	DATE	ZONE	CHANGE	BY	CKD

AMENDMENTS.

SCALE NO SCALE
 DRAWING NO. HF4864

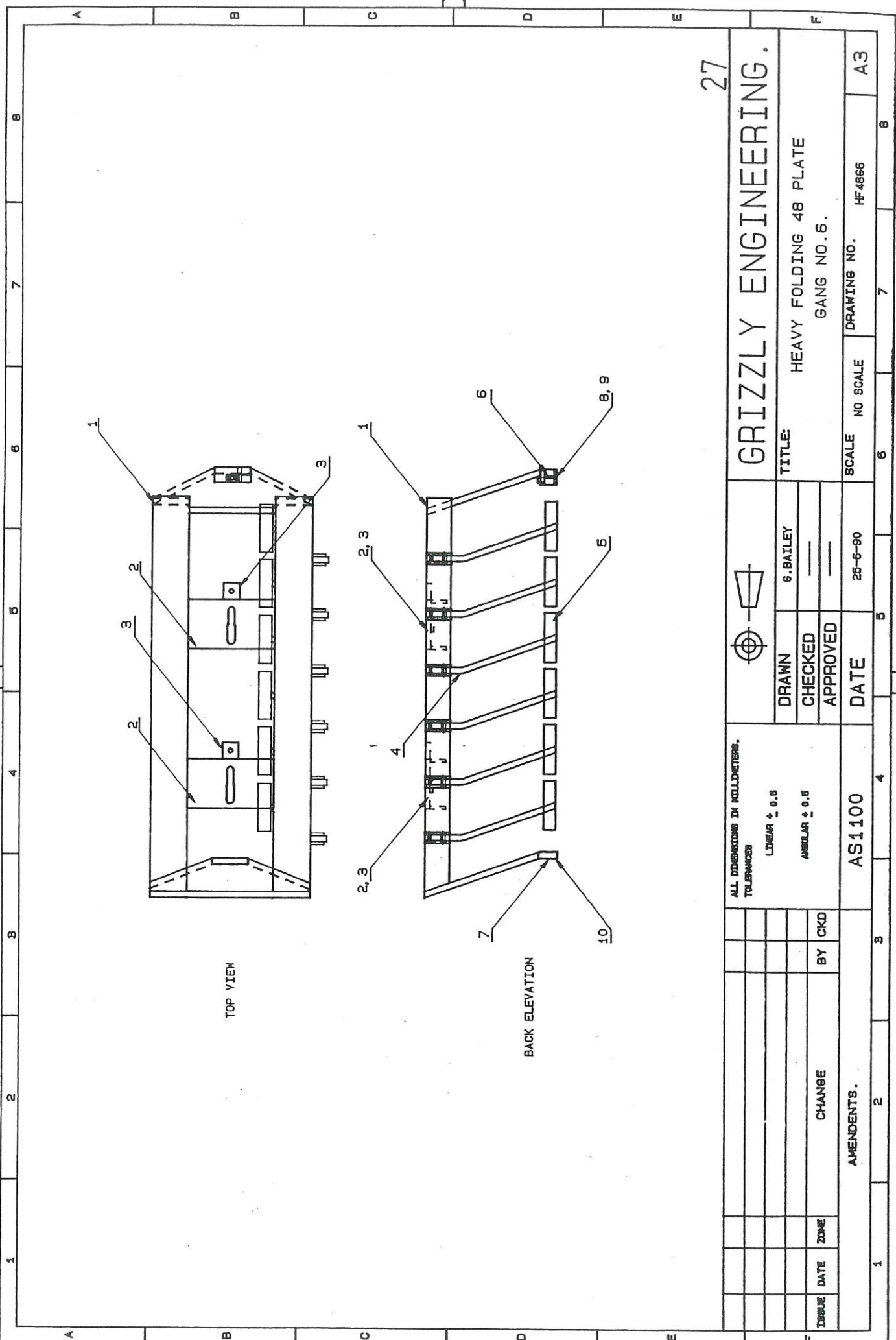
1 2 3 4 5 6 7 8

A3

HEAVY SERIES H48 PLATE FOLDING

GANG ASSEMBLY NO.6

<u>NO.</u>	<u>PART NO.</u>	<u>DESCRIPTION</u>
1	H48G6	GANG FRAME
2	LAEJA105	SLOT 105MM
3	MAHJA070B	GANG ADJUST LUG
4	GFHBA210	SCRAPER ASSEMBLY RIGHT
5	MCCHA210	SCRAPER PAD
6	GEGEA000	AXLE CARRIER SINGLE RIGHT
7	CBAFM000	AXLE CARRIER KISSING
8	FABHA085	BOLT M16
9	FFBHA000	NUT NYLOC M16
10	FABGA065A	BOLT M12 WITH HOLE



27

GRIZZLY ENGINEERING.

TITLE: HEAVY FOLDING 48 PLATE GANG NO.6.



DRAWN 6. BAILEY

CHECKED

APPROVED

DATE 25-6-80

SCALE NO SCALE

DRAWING NO. HF-4866

A3

ALL DIMENSIONS IN MILLIMETERS.
TOLERANCES

LINEAR ± 0.5

ANGULAR ± 0.5

BY CKD

CHANGE

ISSUE DATE ZONE

AS1100

AMENDMENTS.

1	2	3	4	5	6	7	8
---	---	---	---	---	---	---	---

GANG AXLES USED

NO. OF DISC	PART NO.	
	2 HOLES	1 HOLES
3	MJAMA707A	MJAMA688
4	MJAMA944A	MJAMA925A
5	MJAMB181A	MJAMB162A
6	MJAMB418A	MJAMB399A
7	MJAMB655A	MJAMB636A
8	MJAMB892A	MJAMB873

"H" SERIES

GANG ASSEMBLY

DESCRIPTION

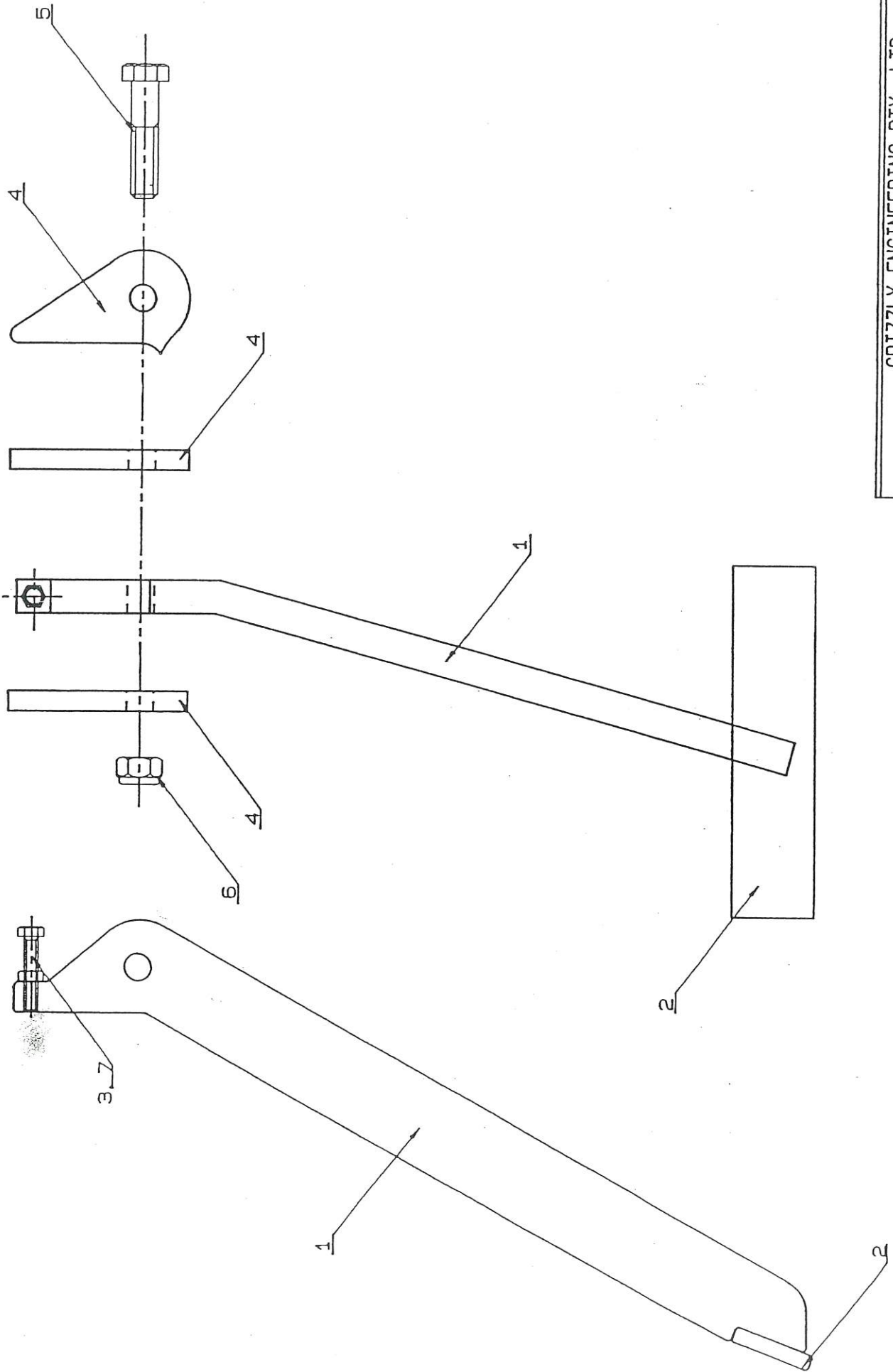
NO.	PART NO.	DESCRIPTION
1	FAAJB260	6 DISC GANG, BOLT M20
2	GEGDA000	AXLE CARRIER SINGLE LEFT
3	MGGFA004	4MM SPACER
4	FHCPA035	GANG SPRING
5	BNTAA001	DUST COVER SERIES II
6	BPBBA000	GANG BEARING 38 X 100 SPHERICAL
7	BGB100B1	LEAD BEARING HOUSING SERIES II
8	BHB100B1	THRUST BEARING HOUSING SERIES II
9	D26DSB26	DISC
10	MEGRA230	230MM SPOOL
11	CBAFM000	AXLE CARRIER KISSING

GANG BOLTS USED

NO. OF DISC	PART NO. M20
3	FAAJA550
4	FAAJA790
5	FAAJB020
6	FAAJB260
7	FAAJB490
8	FAAJB730

NOTE:

- SERIES I BEARING HOUSINGS AND DUST COVER LISTED BELOW.
- BGB100B0 LEAD BEARING HOUSING, SERIES I
- BHB100B0 THRUST BEARING HOUSING, SERIES I
- BNTAA000 DUST COVER WITH NEOPRENE INSERT, SERIES I
- FOR MORE INFORMATION ON BEARING HOUSING ASSEMBLIES REFER TO THE MASTER FILE

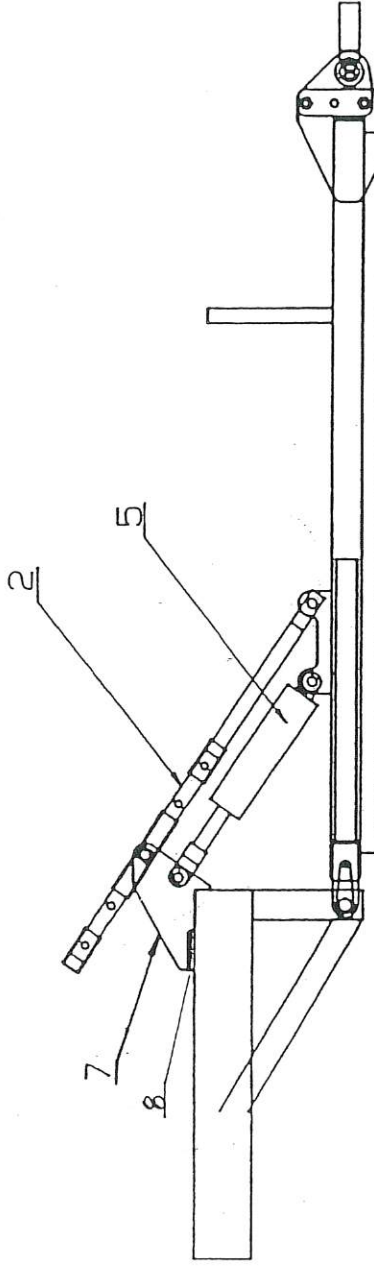


GRIZZLY ENGINEERING PTY. LTD
TITLE: SCRAPER ASSEMBLY LEFT HEAVY
PART NO GFHAA210
SCALE: 1:2.31 DATE: 26.10.89 DRG NO: CGFFJ000

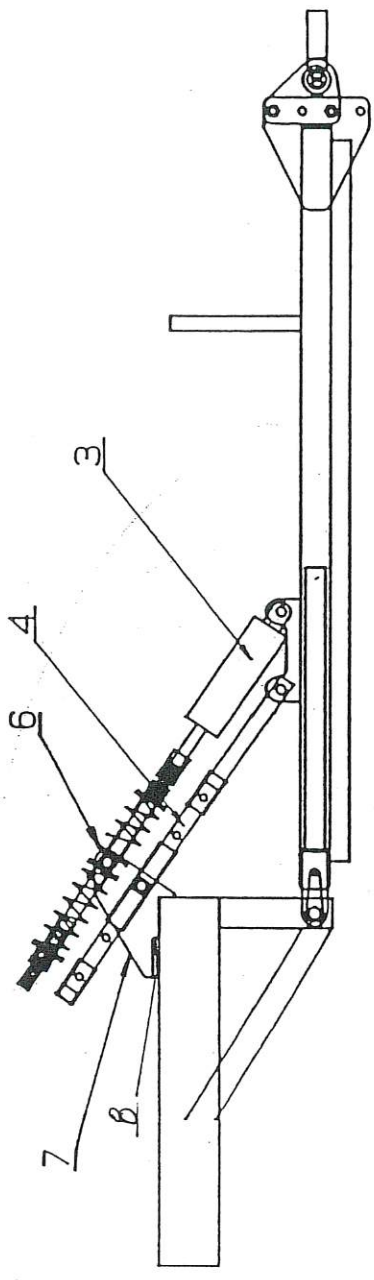
HEAVY SERIES H32-48 PLATE

"S" FOLDING PULL OPTIONS (SPULL)

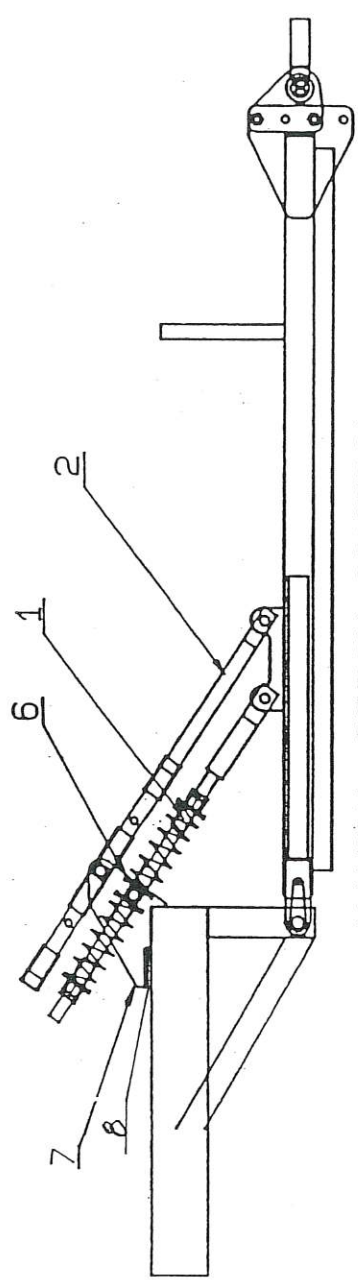
<u>NO.</u>	<u>PART NO.</u>	<u>DESCRIPTION</u>
1	GDFEE0000	LEVELLING ROD
2	GDFEE0001	LOCK UP ASSEMBLY - (LEVELLING ROD)
3	GDFEG0000	HYDRAULIC PITCH CONTROL
4	GDFEE0002	LOCK UP ASSEMBLY - (HYD PITCH CONTROL)
5	GDFEJA000	HYDRAULIC ACCUMULATOR
6	*GKFA0001	SWIVEL ASSEMBLY "S" M24 BOLTS
7	*CBBFJ000	TOP LEVEL LUG
8	MAGPA135	FLAT
<u>NOTE:</u>		
	GKFA0000	SWIVEL ASSEMBLY TO SUIT MACHINES PRE SERIAL NO. 487 (M20 BOLTS).
	CBBFJ001	TOP LEVEL LUG TO SUIT MACHINES PRE SERIAL NO. 487 (M20 BOLTS).



HYDRAULIC ACCUMULATOR SYSTEM



HYDRAULIC PITCH CONTROL WITH LOCK-UP



MANUAL PITCH CONTROL WITH LOCK-UP

GRIZZLY ENGINEERING PTY. LTD	
TITLE: "S" FOLDING PULL	
PART NO.	
SCALE: 1:14	DATE: 20 9 89 DRG NO: SFPULL

"H" SERIES

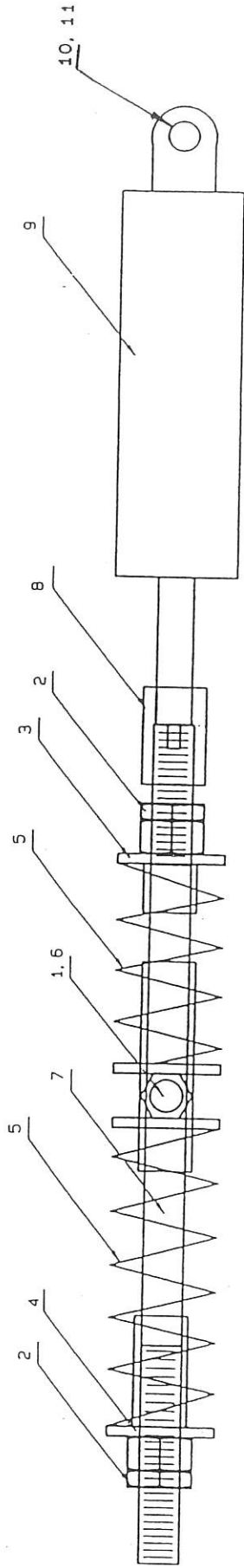
HYDRAULIC PITCH CONTROL - GDFG0000

<u>NO.</u>	<u>PART NO.</u>	<u>DESCRIPTION</u>	<u>QTY.</u>
1	FABKA050	BOLT M24	2
2	FFDPA000	HALF NUT 1-1/4 BSW	2
3	FFGPA040	SPRING ASSEMBLY NUT 40MM	1
4	FFGPA090	SPRING ASSEMBLY NUT 90MM	1
5	FHNPA240	SPRING 240MM	2
6	* GKFA0001	"S" SWIVEL ASSEMBLY 24MM BOLTS	1
7	FPJPA760	THREADED BARE 760MM	1
8	HHFEZ000	ADAPTOR (CROSS RAM)	1
9	HYC250/06	HYD CYL 2.5" X 6" CROSS	1
10	FGBKA135	PIN 1"	1
11	FMCMG000	F/WASHERS	4

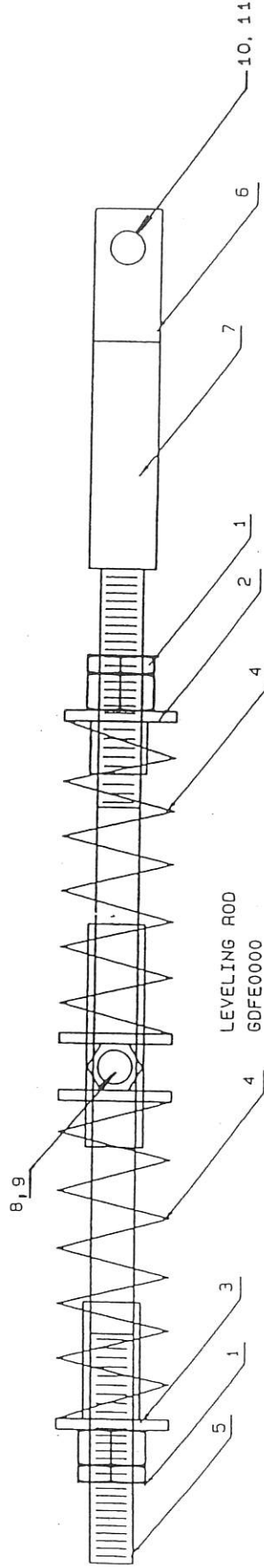
LEVEL ROD ASSEMBLY

1	FFDPA000	HALF NUT 1-1/4 BSW	2
2	FFGPA040	SPRING NUT ASSY 40MM	1
3	FFGPA090	SPRING NUT ASSY 90MM	1
4	FHNPA240	SPRING 240MM	2
5	FPJPA760	THREADED BAR 760MM	1
6	MAEHA100B	FLAT 50 X 10	2
7	MJAPA270A	SQUARE 50 X 50	1
8	* GKFA0001	"S" SWIVEL ASSEMBLY 24MM BOLTS	1
9	FABKA050	BOLT M24	2
10	FGBKA135	PIN 1"	1
11	FMCMG000	F/WASHER	4

NOTE: * CHANGE HAS BEEN MADE



HYD PITCH CONTROL OPTN.
GDF60000

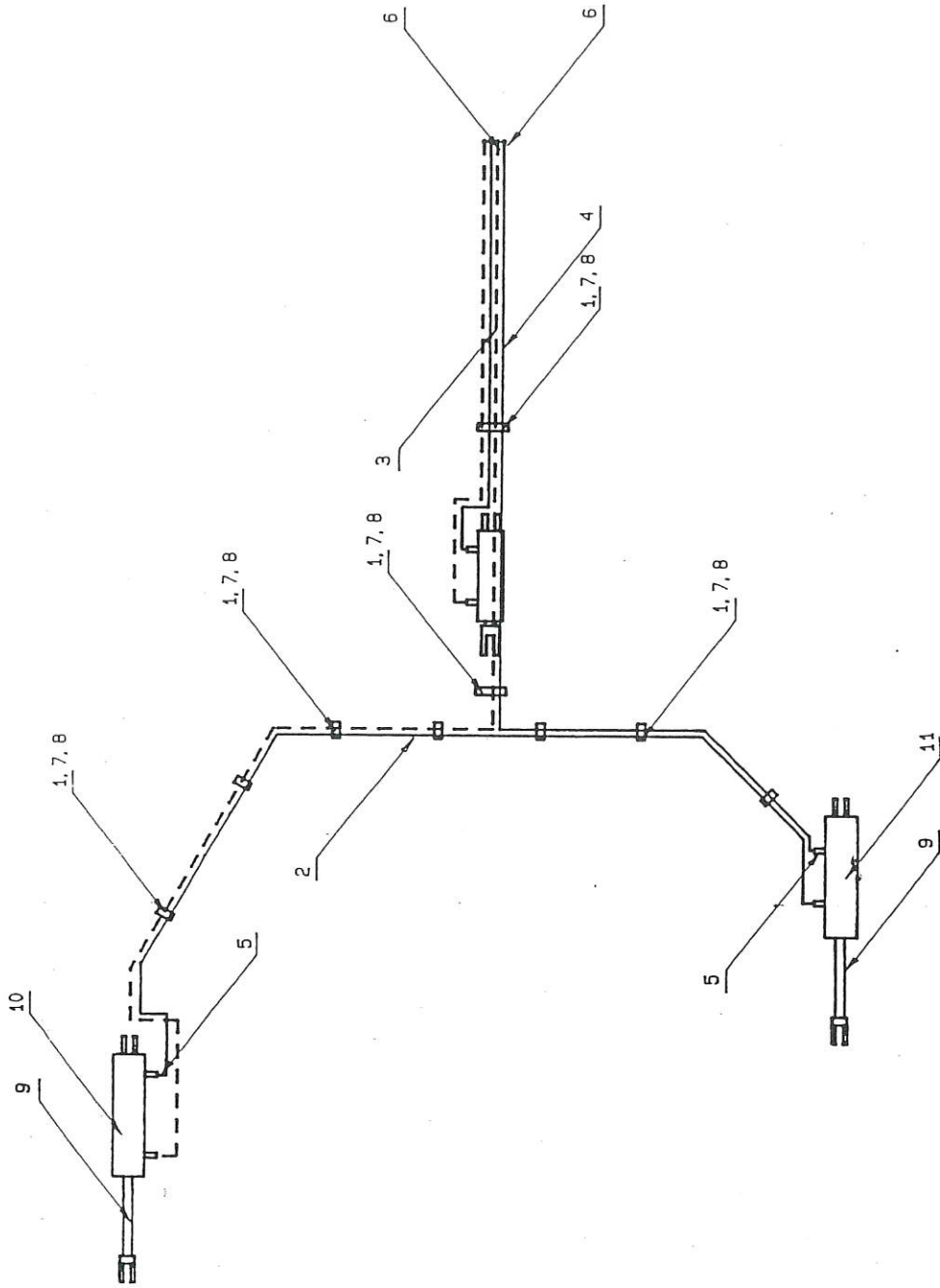


LEVELING ROD
GDFE0000

NR	QTY	PART, MATERIAL	DIMENSIONS	PART NO.
TITLE: GRIZZLY ENGINEERING PTY				
LEVELING ROD				
PART NO GDFE0000				
SCALE 1: 3		DATE: 19.04.89		DRG NO. GDFE0000

HEAVY SERIES H32-48 PLATE
HYDRAULIC KIT - HFHAC001

<u>NO.</u>	<u>PART NO.</u>	<u>DESCRIPTION</u>	<u>QTY.</u>
1	FABEA045	BOLT M8 X 45 GRADE 8.8	10
2	HGCCET700	HOSE (4,700) HHAKBU07 BOTH ENDS	1
3	HGCAH700	HOSE (7,700) HHAKBU07 HHAKMU07	1
4	HGCAG100	HOSE (6,100) HHAKBU07 HHAKMU07	1
5	HHABAM07	FITTING U.N O RING J,I,C,M,N	4
6	HHDMNW07	QUICK RELEASE COUPLING 3/4"	4
7	HJBCA000	CLAMP SHELL 3/4-3/4	20
8	HJBFA000	TOP PLATE FOR 3/4 CLAMP	10
9	HRDBA285	TRANSPORT BLOCK (285MM)	2
10	HZP425/12	HYDRAULIC CYL 4.25" X 12"	1
11	HZP450/12D	HYD CYL 4.5" X 12" D/STOP	1



NR	QTY	PART, MATERIAL	DIMENSIONS	PART NO.
		GRIZZLY ENGINEERING PTY		
TITLE H32, H48 HYDRAULIC SYSTEM				
PART NO				
SCALE	1: 20. 83	DATE	30-8-89	DRG NO.

CHANGES - "H" SERIES HG32-48 PLATE

REFERENCE	OLD	NEW	DATE OF	SERIAL NO.	NOTES
PAGE	ITEM	PART NO.	CHANGE	OF CHANGE	

1

Single level Bill of Materials

Stock item	Description	Quantity	R.R.Price
GTH00000	MIN SPARE PARTS FOR "H" SERIES GRIZ		\$
BAMAA000	H70 BEARING KIT	1.0000	87.74 EA
BGB100B1	2 BEARINGS, 1 SEAL, 1 V RING & SPLIT PIN	1.0000	122.21 EA
BHB100B1	LEAD BEAR HOUSING F-K SERS.2 BEARING FITTED	1.0000	122.21 EA
BJEGA035	THRUST BEAR HOUSING F-K SERS.2 BEARING FITTED	2.0000	7.76 EA
BNTAA001	VESCONITE 50 ID X 60 OD X 35 MM DUST COVER GRIZZLY SERIES 2	2.0000	30.80 EA
BPBBA000	BEARING 38 ID X 100 OD SPHER SELF ALLIGN SQUARE	2.0000	40.40 EA
FABHA075	BOLT M16 X 75 GRADE 8.8 ZP H/T	6.0000	1.13 EA
FDBJA000	STUD WHEEL H70 11/16" X 1 7/8"	6.0000	4.73 EA
FEBFA040	SET SCREW M10 X 40 GRADE 8.8 BLACK	10.0000	0.24 EA
FEBGA025	SET SCREW M12 X 25MM	2.0000	0.33 EA
FFAFA000	NUT BLACK M10	10.0000	0.12 EA
FFBHA000	NUT NYLOC M16	6.0000	0.40 EA
FFFJA000	NUT WHEEL H70 11/16" U.N.F.	6.0000	3.38 EA
FHNPA240	SPRING 240MM X 12MM X 63MM MEAN COIL DIAMETER 10 COILS FLAT END COMPRESSION	1.0000	43.20 EA
GFHAA210	SCRAPER ASSY FOR H LEFT	1.0000	
GFHBA210	SCRAPER ASSY FOR H RIGHT	1.0000	
MGGFA004	SHS 51 X 51 (4MM) SPACER	2.0000	2.76 EA

Single level Bill of Materials

Stock item	Description	Quantity	R.R. Price
WKMAA000	H70 DUST CAP PRESSED METAL FOR FRONT OF HUB	1.0000	11.39 EA
BPBBB000	BEARING 38 X 100 CYLINDRICAL (OLD TYPE)		55.00 EA
BPBCB000	BEARING 38 X 102 CYLINDRICAL (OLD TYPE)		55.00 EA
BPCBB000	BEARING 40 X 100 CYLINDRICAL (OLD TYPE)		55.00 EA
BPCCB000	BEARING 40 X 102 CYLINDRICAL (OLD TYPE)		55.00 EA
BDMZA000	BALL BUSHING 70 ID X 105 OD ON WHEEL ASSY, SIDE PLATE ASSY	1.0000	65.58 EA

Addition to Min Spare Parts:

Please add Part No. BDMZA000

Ball Bushing 70 id x 105 od on Wheel Assy, Side Plate Assy. \$65.58

Machines used on: "S" Fixed
"S" Folding
"H" Series
R/Cropper
L/Ripper
Trail/Ripper

