

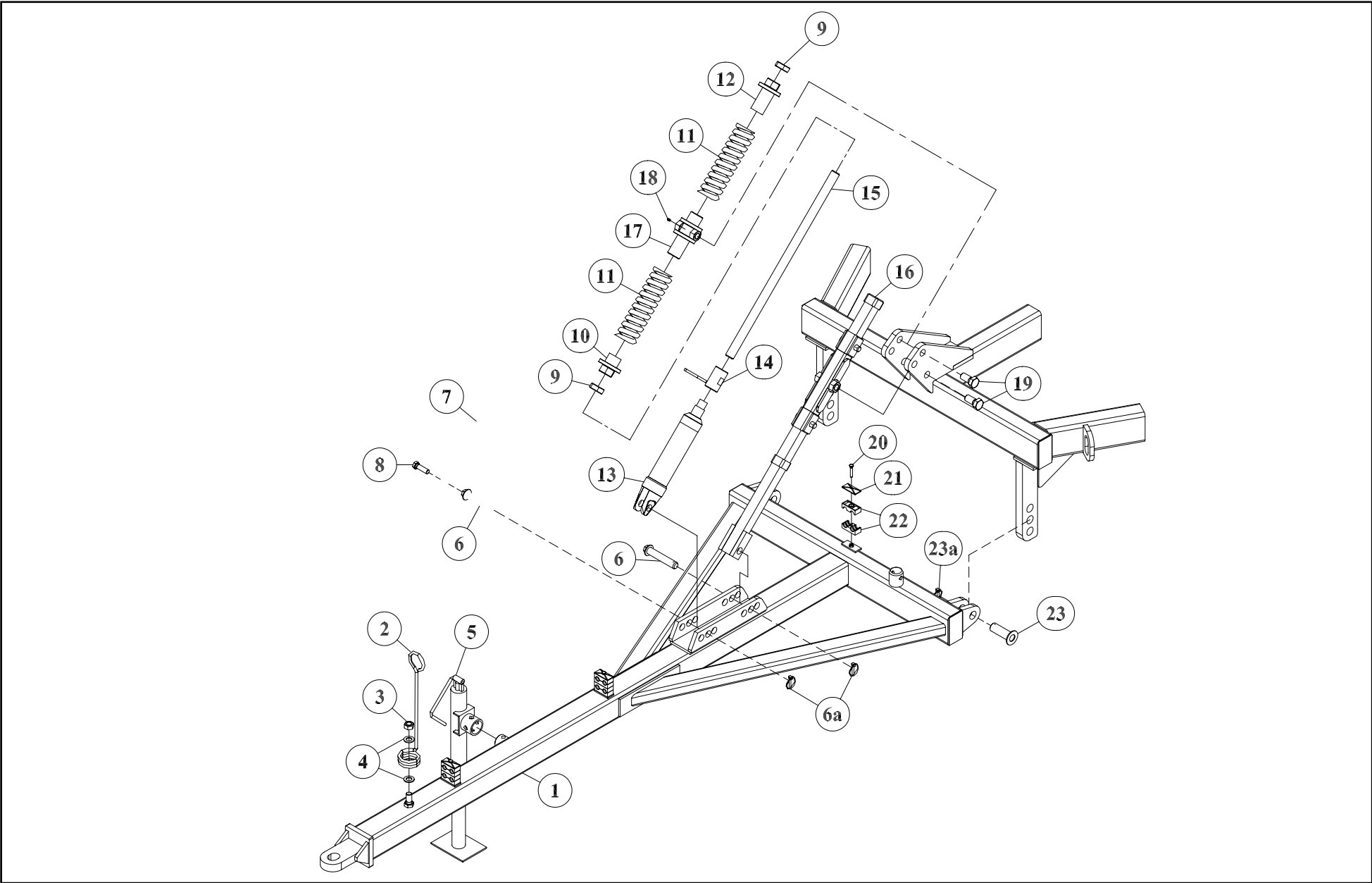
# **Parts Assembly Drawings & Parts Lists**

# Grizzly Grumpy Series



**Grumpy  
Series**

# Plough Pull Assembly

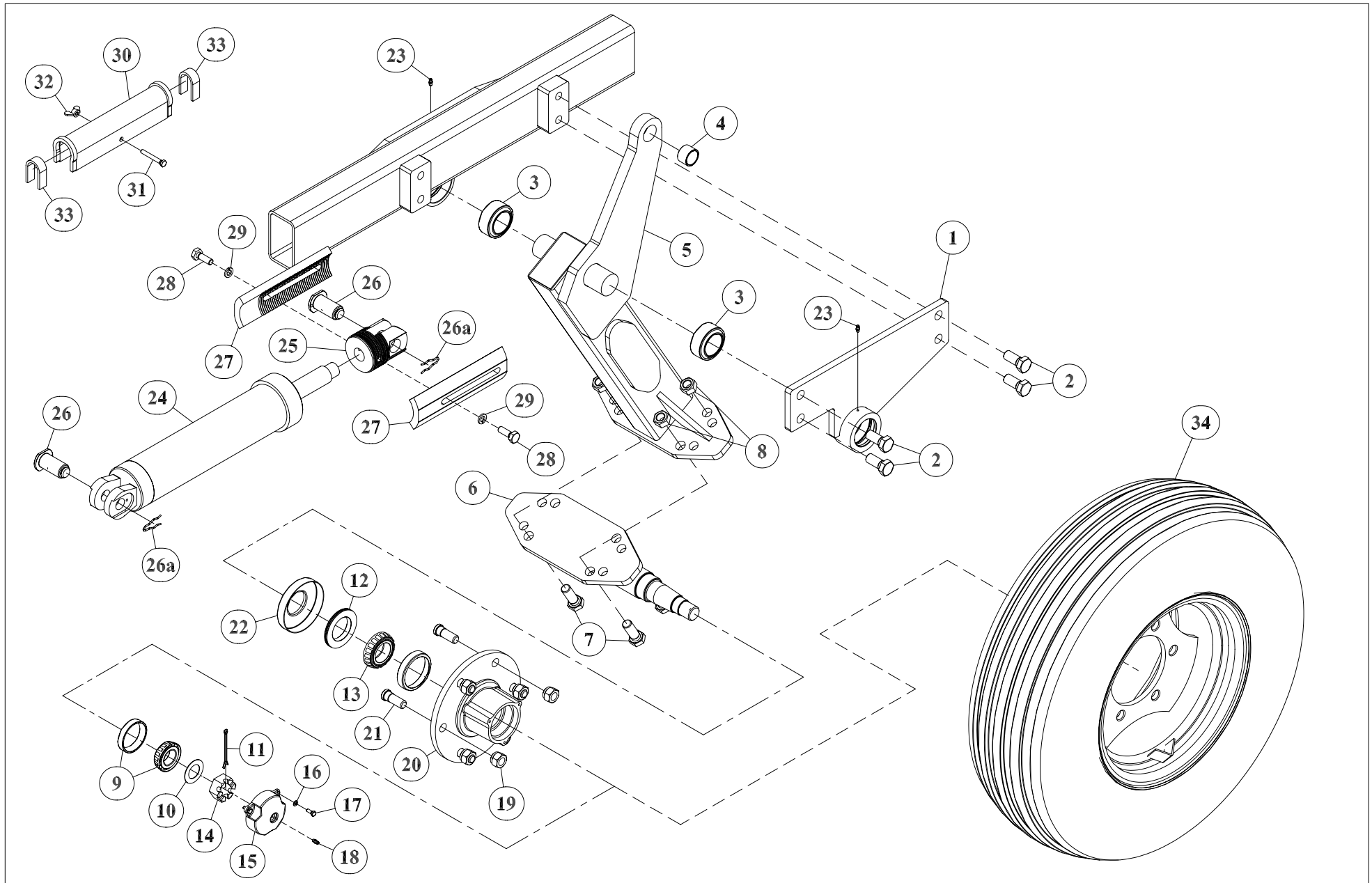


# Plough Pull Assembly - 28 to 40 plate

Pos	Part No	Description	Qty
1	GHEA0004	Pull frame	1
2	FHKNA440	Spring type hose holder	1
3	FFBJA000	Nyloc nut M20	1
4	FMAJE000	Flat washer 20id x 41od x 3mm thick	2
5	GKFE0000	Parking jack	1
6	FGBKA135	Pin 1" x 135mm long	2
6a	FKAEA000	Lynch pin 6mm	2
7	GNJEA000	Pitch control gauge assembly	1
8	FABJA055	Bolt M16 x 55mm grade 8.8	1
9	FFDPA000	Half nut 1 1/4" BSW	2
10	FFGPA040	Spring assembly nut (31.75mm) x 40mm	1
11	FHURA280	Spring 280mm x 17mm x 70mm	2
12	FFGPA090	Spring assembly nut (31.75mm) x 90mm	1
13	HY_250/06	Hydraulic ram 2 1/2" x 6" (1 1/2" rod)	1
14	HHFEZ00_	Pitch control adaptor	1
15	FPJPA760	Threaded bar 31.75mm x 760mm	1
16	GDFE0002	Lock up assembly	1
17	GKFA0001	Swivel assembly	1
18	BMAAA000	Grease nipple	1
19	FABKA047	Bolt M24 x 47mm grade 8.8	4
20	FABEA045	Bolt M8 x 45mm grade 8.8 (2 clamps)	1
	FABEA080	Bolt M8 x 80mm grade 8.8 (4 clamps)	2
21	HJBFA000	Top plate for clamp shell	3
22	HJBCA000	Clamp shell 3/4" x 3/4"	10
23	FGBPA095	Pin 31.75mm x 95mm long (pull pin)	2
23a	FKAEA000	Lynch pin 6mm	2

Pos	Part No	Description	Qty
		Pitch control assembly. Complete assembly part number is GDFG_000.	
<p><b>NOTE:</b> An underscore _ in a part number shows the manufacturer of that component can vary. Always supply the machines's Serial No for correct identification and supply of parts.</p>			

# Right Hand Wheel Arm Assembly Parts

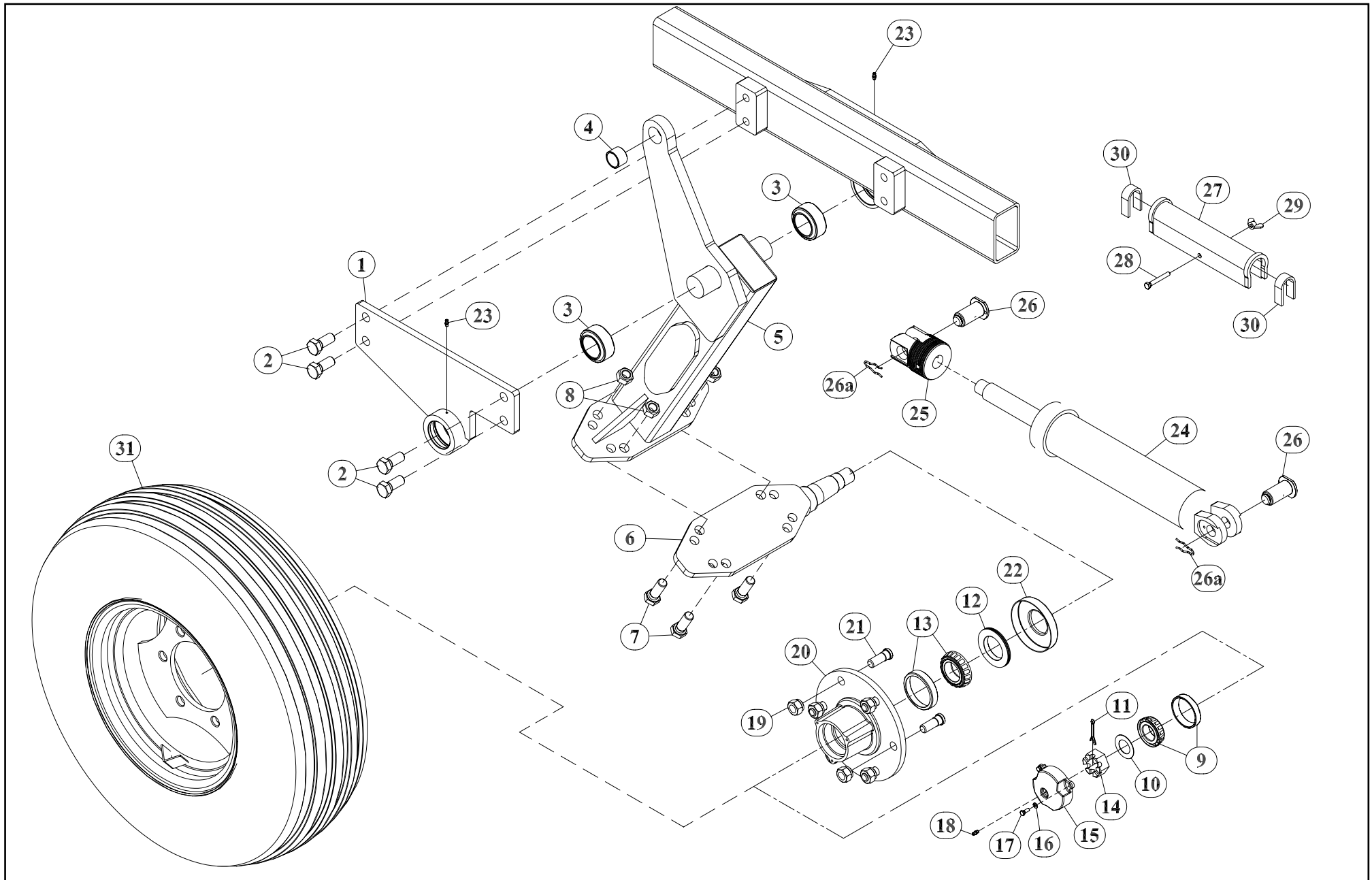


## Wheel Arm Assembly Parts RH - 28 to 40 plate

Pos	Part No	Description	Qty
1	GNHME001	Left wheel side plate assembly	1
2	FABJA045	Bolt M20 x 45mm grade 8.8	4
3	BDGAA001	Ball bushing 50 id x 75 od	2
4	MDBZA025	Hardened bush	1
5	GNJEA0002	Right hand wheel leg	1
6	WMJAA405	Single stub axle assembly H60 6 stud	1
7	FABJA055	Bolt M20 x 55mm grade 8.8	4
8	FFBJA000	Nyloc nut M20	4
9	BCJAA000	Roller bearing (small)	1
10	FMASAK00	Flat washer 32id x 54od x 1mm	1
11	FKCEA063	Cotter pin 5mm x 63mm long	1
12	BNJBA000	Seal H60 55id x 85od	1
13	BBGAA000	Roller bearing (large)	1
14	FFCPA000	1 1/4" UNF slotted nut	1
15	WKJAA000	Cast hub cap	1
16	FMBDCB00	Spring washer M6	3
17	FABDA016	Bolt M6 x 16mm grade 8.8	3
18	BNMAA000	Grease nipple	1
19	FFFJA000	Wheel nut 18mm H60/H70	6
20	WJJBA004	Hub H60 - Bare, wheel studs fitted	1
21	FDBJA001	Wheel stud M18 x 50mm long H60/H70	6
22	BNJAA000	Dust cover H60	1
23	BNMAA000	Grease nipple	2
24	HZ_350/12D	Hydraulic Ram 3 1/2" x 12"	1
25	HM_BA000	Depth stop clevis	1
26	FGHPA072/_	1 1/4" Pin lockable & greasable	2
26a	FKBDA000	Hair clip 1 1/4"	2

Pos	Part No	Description	Qty
27	HMDEA00_	Depth stop side plates	2
28	FABGA038	Bolt 1/2" x 38mm grade 8.8	2
29	FMBGEB00	Spring washer 1/2"	2
30	HRDAA290	Transport block assembly	1
31	FABEA060	Bolt M8 x 60mm grade 8.8	1
32	FFEEA000	Wing nut M8	1
33	BRDEB000	Self adhesive sponge (140mm long)	2
34	WSJDDD01	Rim/Tyre assembly - 9.00 x 16 10ply H60	1
	<b>BAJAA000</b>	<b>H60 Bearing Kit</b> (Kit includes one of each item 9-13) one kit required per wheel assembly for standard single wheels. Two wheel kits required per wheel assembly for dual wheels.	
<b>NOTE:</b> An underscore _ in a part number shows the manufacturer of that component can vary. Always supply the machines's Serial No for correct identification and supply of parts.			

# Left Hand Wheel Arm Assembly



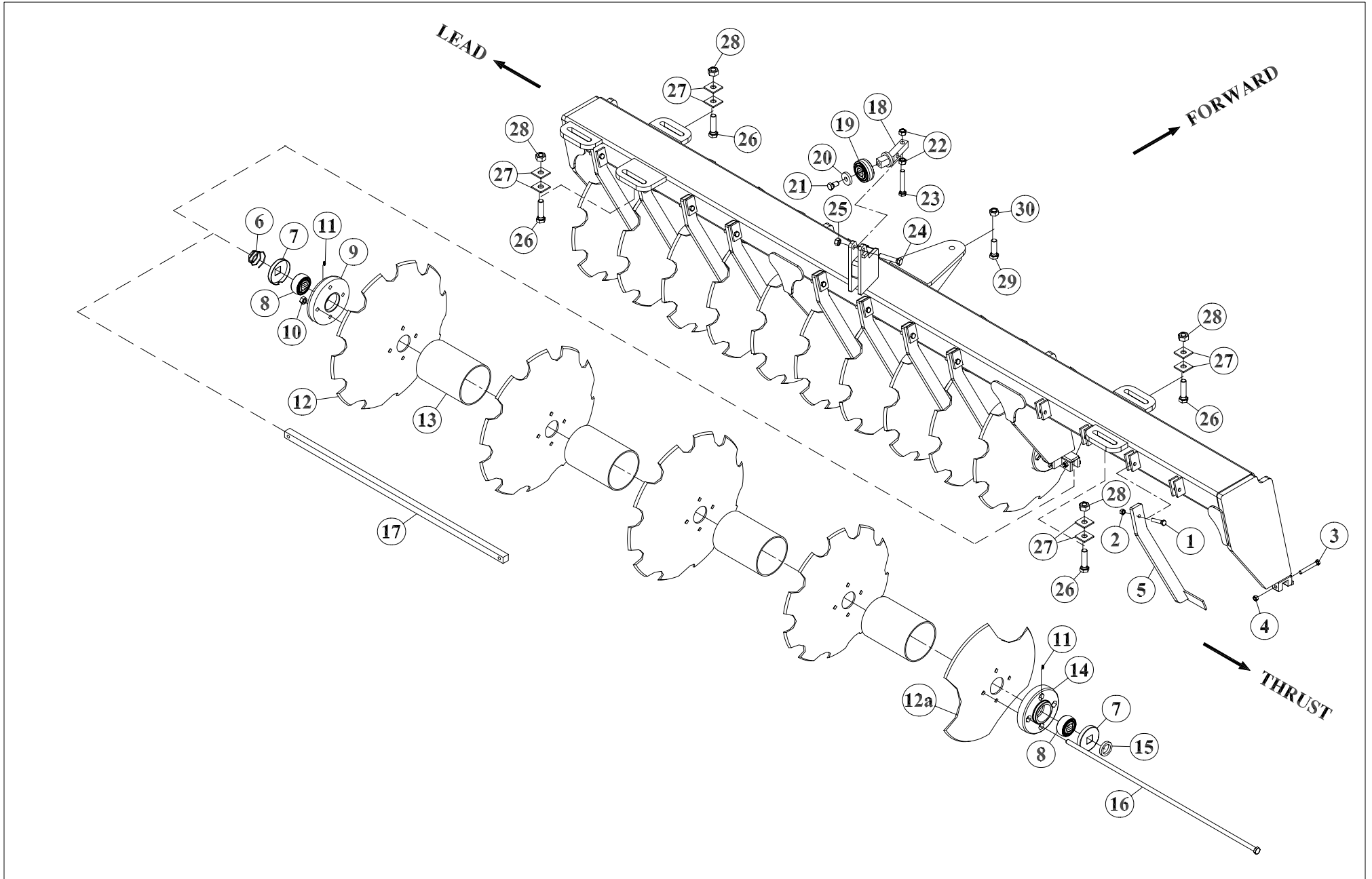
## Wheel Arm Assembly Parts LH - 28 to 40 plate

Pos	Part No	Description	Qty
1	GNHME000	Left wheel side plate assembly	1
2	FABJA045	Bolt M20 x 45mm grade 8.8	4
3	BDGAA001	Ball bushing 50 id x 75 od	2
4	MDBZA025	Hardened bush	1
5	GNJEA0001	Left hand wheel leg	1
6	WMJAA405	Single stub axle assembly H60 6 stud	1
7	FABJA055	Bolt M20 x 55mm grade 8.8	4
8	FFBJA000	Nyloc nut M20	4
9	BCJAA000	Roller bearing (small)	1
10	FMASAK00	Flat washer 32id x 54od x 1mm	1
11	FKCEA063	Cotter pin 5mm x 63mm long	1
12	BNJBA000	Seal H60 55id x 85od	1
13	BBGAA000	Roller bearing (large)	1
14	FFCPA000	1 1/4" UNF slotted nut	1
15	WKJAA000	Cast hub cap	1
16	FMBDCB00	Spring washer M6	3
17	FABDA016	Bolt M6 x 16mm grade 8.8	3
18	BNMAA000	Grease nipple	1
19	FFFJA000	Wheel nut 18mm H60/H70	6
20	WJJBA004	Hub H60 - Bare, wheel studs fitted	1
21	FDBJA001	Wheel stud M18 x 50mm long H60/H70	6
22	BNJAA000	Dust cover H60	1
23	BNMAA000	Grease nipple	2
24	HZ_325/12D	Hydraulic Ram 3 1/4" x 12"	1
25	HM_BA000	Depth stop clevis	1
26	FGHPA072/_	1 1/4" Pin lockable & greasable	2
26a	FKBDA000	Hair clip 1 1/4"	2

Pos	Part No	Description	Qty
27	HRDAA290	Transport block assembly	1
28	FABEA060	Bolt M8 x 60mm grade 8.8	1
29	FFEEA000	Wing nut M8	1
30	BRDEB000	Self adhesive sponge (140mm long)	2
31	WSJDDD01	Rim/Tyre assembly - 9.00 x 16 10ply H60	1
	<b>BAJAA000</b>	<b>H60 Bearing Kit</b> (Kit includes one of each item 9-13) one kit required per wheel assembly for standard single wheels. Two wheel kits required per wheel assembly for dual wheels.	
<b>NOTE:</b> An underscore _ in a part number shows the manufacturer of that component can vary. Always supply the machines's Serial No for correct indentification and supply of parts.			



# Disc Gang Assemblies - Left Hand Leading

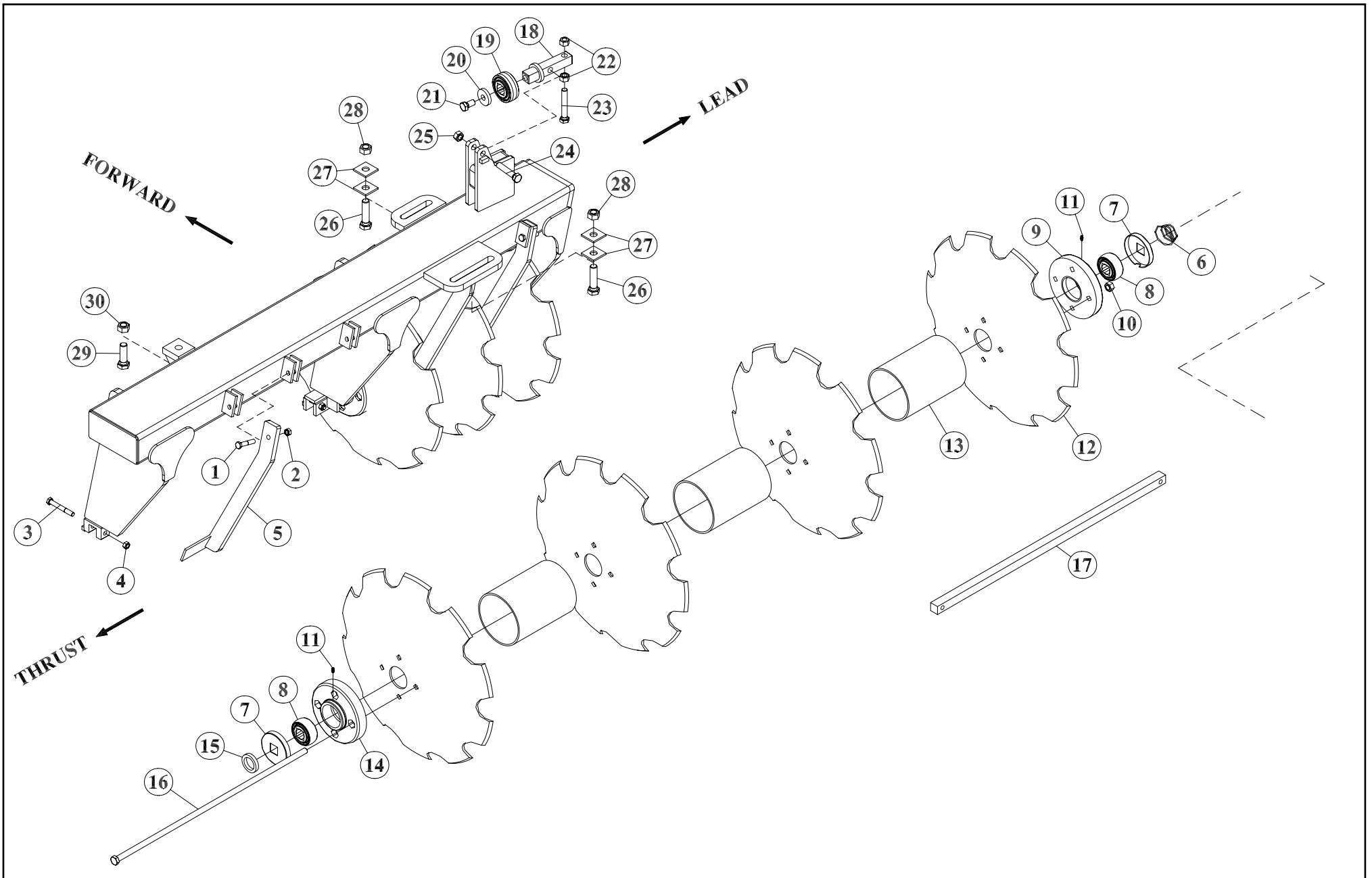


# Disc Gang Assembly Parts - Left Hand Leading

Pos	Part No	Description	Qty
1	FABGA060	Bolt M12 x 60mm grade 8.8	12
2	FFBGA000	Nyloc nut M12	12
3	FABGA090	Bolt M12 x 90mm grade 8.8 (single axle keeper)	2
	FABGA065	Bolt M12 x 65mm grade 8.8 (double axle keeper)	4
4	FFBGA000	Nyloc nut M12	6
5	GFEB A200	Right hand scraper	12
6	FHCPA035	Conical spring 41 id x 35mm	1
7	BNSTA000	Dust cover for bearing	2
8	BPAAB002	Bearing - greasable 28.57 x 80mm	2
9	BEB080B0	Bearing housing lead greasable with bearing	1
10	FFBHA000	Nyloc nut M16	4
11	BMAAA000	Grease nipple	2
12	(sizes vary)	Discs	4
12a		Filler disc (gangs 2 & 3 only)	1
13	MECPA230	Spool 150mm NB x 230mm long	3
14	BFB080B0	Bearing housing thrust greasable with bearing	1
15	MFHGA010	Spacer washer 10mm thick	1
16	(lengths vary)	Gang bolt M16	4
17	(lengths vary)	1 1/8 Square gang axle	1
18	GNAUK006	Gang roller axle assembly (gangs 2)	1
19	BPAAB000	Bearing 28.57 sq id x 85.72 od (roller)	1
20	MDDEA009	Washer 50 od x 9mm thick	1
21	FABHA025	Bolt M16 x 25mm grade 8.8	1
22	FFAHA000	Black nut M16	2
23	FABHA100	Bolt M16 x 100mm grade 8.8	1
24	FABHA080	Bolt M16 x 80mm grade 8.8	1
25	FFBHA000	Nyloc nut M16	1
26	FABJA080	Bolt M20 x 80mm grade 8.8	4
27	FMDJN00	Square washer 20 id x 50 od x 5mm thick	8
28	FFAJA000	Black nut M20	4
29	FABJA065	Bolt M20 x 65mm grade 8.8	1
30	FFBJA000	Nyloc nut M20	1

Pos	Part No	Description	Qty
	(items 26-30)	These items are used to fix the gang assembly to the frame of the plough.  <b>IMPORTANT</b> Quantities of all these items change from gang to gang.	

# Disc Gang Assemblies - Right Hand Leading



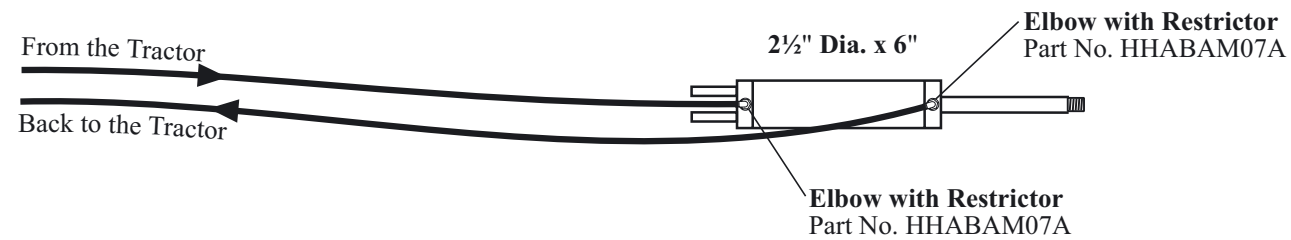
## Disc Gang Assembly Parts - Right Hand Leading

Pos	Part No	Description	Qty
1	FABGA060	Bolt M12 x 60mm grade 8.8	5
2	FFBGA000	Nyloc nut M12	5
3	FABGA090	Bolt M12 x 90mm grade 8.8 (single axle keeper)	2
	FABGA065	Bolt M12 x 65mm grade 8.8 (double axle keeper)	2
4	FFBGA000	Nyloc nut M12	4
5	GFEEA200	Left hand scraper	5
6	FHCPA035	Conical spring 41 id x 35mm	1
7	BNSTA000	Dust cover for bearing	2
8	BPAAB002	Bearing - greasable 28.57 x 80mm	2
9	BEB080B0	Bearing housing lead greasable with bearing	1
10	FFBHA000	Nyloc nut M16	4
11	BMAAA000	Grease nipple	2
12	(sizes vary)	Discs	4
13	MECPA230	Spool 150mm NB x 230mm long	3
14	BFB080B0	Bearing housing thrust greasable with bearing	1
15	MFHGA010	Spacer washer 10mm thick	1
16	(lengths vary)	Gang bolt M16	4
17	(lengths vary)	1 1/8 Square gang axle	1
18	GNAUK003	Gang roller axle assembly (gangs 1 & 3)	1
19	BPAAB000	Bearing 28.57 sq id x 85.72 od (roller)	1
20	MDDEA009	Washer 50 od x 9mm thick	1
21	FABHA025	Bolt M16 x 25mm grade 8.8	1
22	FFAHA000	Black nut M16	2
23	FABHA100	Bolt M16 x 100mm grade 8.8	1
24	FABHA080	Bolt M16 x 80mm grade 8.8	1
25	FFBHA000	Nyloc nut M16	1
26	FABJA080	Bolt M20 x 80mm grade 8.8	2
27	FMDJN00	Square washer 20 id x 50 od x 5mm thick	4
28	FFAJA000	Black nut M20	2
29	FABJA065	Bolt M20 x 65mm grade 8.8	1
30	FFBJA000	Nyloc nut M20	1

Pos	Part No	Description	Qty
	(items 26-30)	These items are used to fix the gang assembly to the frame of the plough.  <b>IMPORTANT</b> Quantities of all these items change from gang to gang.	

# Hydraulic Pitch Control Plumbing Diagram

A double acting cylinder is used on the pitch control and must be assembled as shown.  
Follow the numbering system provided with the new plough to correctly sort and assemble hydraulic hoses.

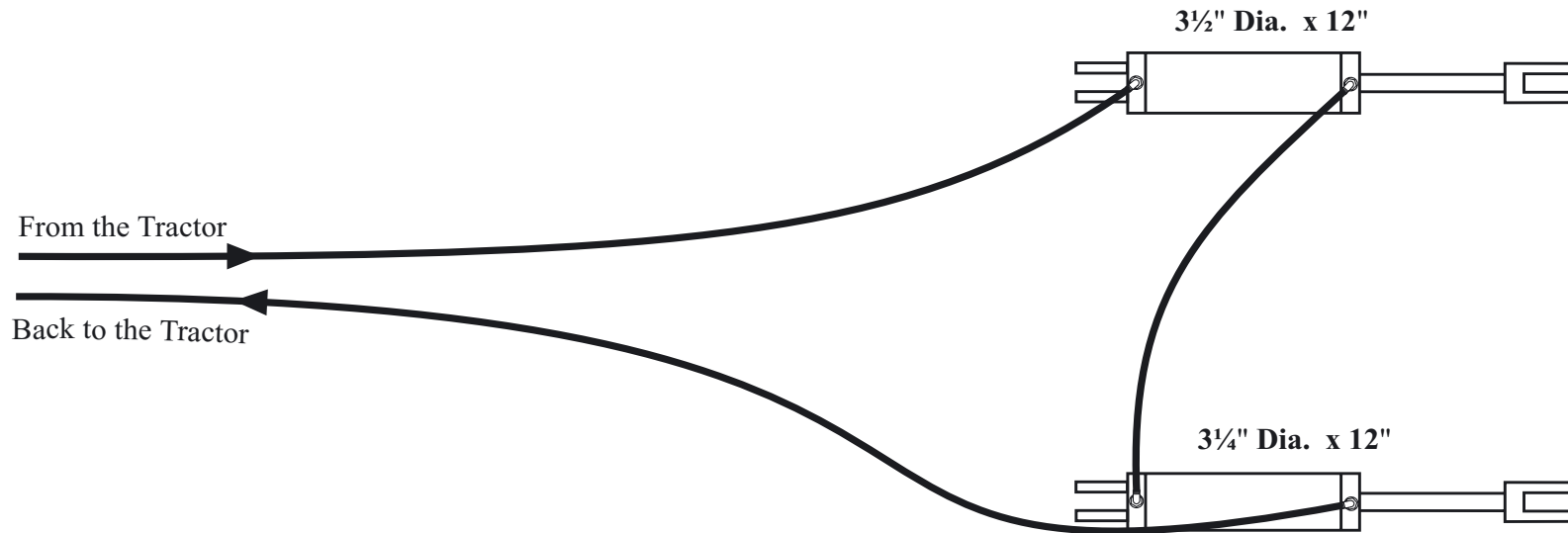


# Hydraulic Wheel Lift Plumbing Diagram - Grumpy Models

Phasing cylinders are used on the wheel lift and must be assembled as shown.

Follow the numbering system provided to correctly sort and assemble hydraulic hoses.

Master Cylinder on right hand side wheel  
(when standing behind and facing the plough)



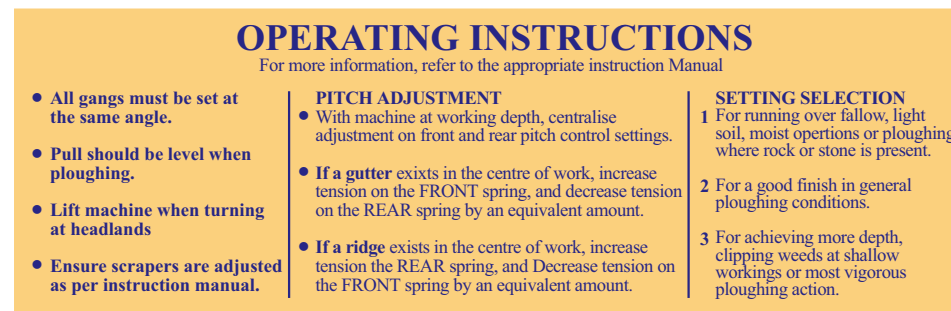
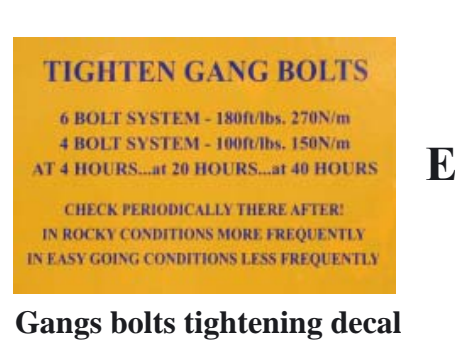
## ⚠ CAUTION

An **inline filter system** must be fitted on the self-phasing hydraulic wheel lift circuit of ploughs equipped with PTE hydraulic cylinders.  
Failure to use inline filters may lead to premature failure of cylinder valves which is not covered by warranty.

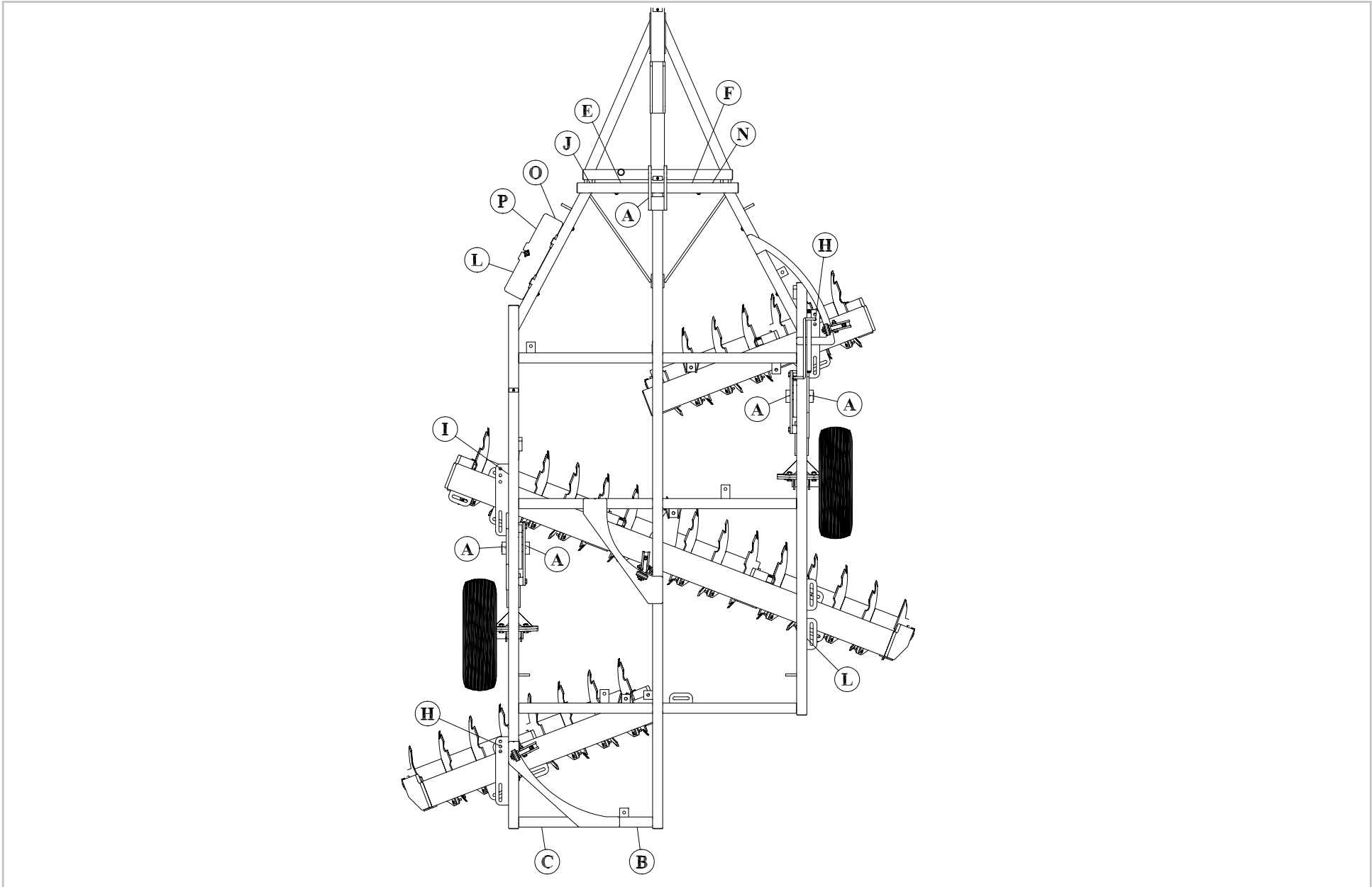
## ⚠ CAUTION

If the plough is fitted with Lyco hydraulic self-phasing wheel lift cylinders, the lift rams **must be fully extended and contracted for 10 cycles** (after the first phasing) to ensure the cylinder seals are bedded in properly.  
Failure to do this during assembly may lead to the problem of leaking seals.

# Decals



# Decal Locations





# Parts Index

<b>B</b>		FFFJA000	51, 53	HY_250/06	49
BAJAA000	51, 53	FFGPA040	49	HZ_325/12D	53
BBGAA000	51, 53	FFGPA090	49	HZ_350/12D	51
BCJAA000	51, 53	FGBKA135	49		
BDGAA001	51, 53	FGBPA095	49	<b>M</b>	
BEB080B0	55, 57	FGHPA072/_	51, 53	MDBZA025	51, 53
BFB080B0	55, 57	FHCPA035	55, 57	MDDEA009	55, 57
BMAAA000	49, 55, 57	FHKNA440	49	MECPA230	55, 57
BNJAA000	51, 53	FHURA280	49	MFHGA010	55, 57
BNJBA000	51, 53	FKAEA000	49		
BNMAA000	51, 53	FKBDA000	51, 53	<b>W</b>	
BNSTA000	55, 57	FKCEA063	51, 53	WJBA004	51, 53
BPAAB000	55, 57	FMAJE000	49	WKJAA000	51, 53
BPAAB002	55, 57	FMASAK00	51, 53	WMJAA405	51, 53
BRDEB000	51, 53	FMBDCB00	51, 53	WSJDDD01	51, 53
		FMBGEB00	51		
<b>F</b>		FMDJN00	55, 57		
FABDA016	51, 53	FPJPA760	49		
FABEA045	49				
FABEA060	51, 53	<b>G</b>			
FABEA080	49	GDFE0002	49		
FABGA038	51	GFEAA200	57		
FABGA060	55, 57	GFEB A200	55		
FABGA065	55, 57	GHEA0004	49		
FABGA090	55, 57	GJEA0001	53		
FABHA025	55, 57	GJEA0002	51		
FABHA080	55, 57	GKFA0001	49		
FABHA100	55, 57	GKFE0000	49		
FABJA045	51, 53	GNAUK003	57		
FABJA055	49, 51, 53	GNAUK006	55		
FABJA065	55, 57	GNHME000	53		
FABJA080	55, 57	GNHME001	51		
FABKA047	49	GNJEA000	49		
FDBJA001	51, 53				
FFAHA000	55, 57	<b>H</b>			
FFAJA000	55, 57	HHABAM07A	59		
FFBGA000	55, 57	HHFEZ00_	49		
FFBHA000	55, 57	HJBCA000	49		
FFBJA000	49, 51, 53, 55, 57	HJBFA000	49		
FFCPA000	51, 53	HM_BA000	51, 53		
FFDPA000	49	HMDEA00_	51		
FFEEA000	51, 53	HRDAA290	51, 53		

