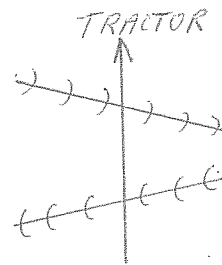


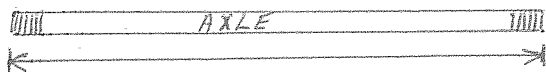
700  
B60 SERIES



SIZE	FRONT GANG AXLES			BACK GANG. AXLES		
	LEADING	MIDDLE	BACK	LEADING	MIDDLE	BACK
20 R	M0041SQ40	N/A	M0040SQ40	M0041SQ40	N/A	M0040SQ40
24 R	M0043SQ40	N/A	M0042SQ40	M0043SQ40	N/A	M0042SQ40
28 R	M0043SQ40	N/A.	M0016SQ40	M0043SQ40	N/A.	M0016SQ40
32 R	M0043SQ40	M0040SQ40	M0040SQ40	M0043SQ40	M0040SQ40	M0040SQ40
36 R <sup>3</sup> BAR	M0883SQ40	M0042SQ40	M0040SQ40	M0883SQ40	M0042SQ40	M0040SQ40
40 R <sup>3</sup> BAR	M0884SQ40	M0042SQ40	M0042SQ40	M0884SQ40	M0042SQ40	M0042SQ40

- M0040SQ40 1192 mm LONG
- M0041SQ40 1370 mm "
- M0042SQ40 1440 mm "
- M0043SQ40 1625 mm "
- M0883SQ40 1880 mm "
- M0016SQ40 1955 mm "
- M0884SQ40 2125 mm "

MEASUREMENTS ARE FROM END OF  
THREAD TO END OF THREAD.



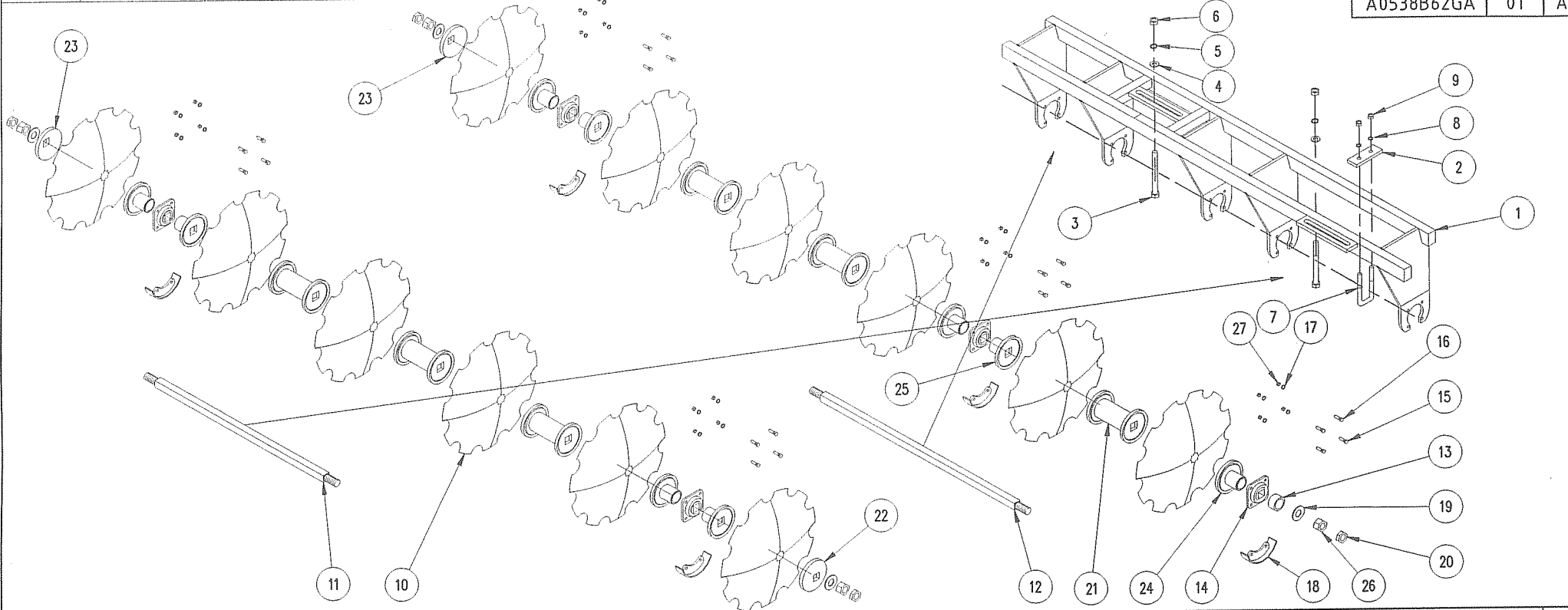
NOTE THESE ARE ALL 40mm AXLES.

APPROX. PRE 1991 AXLES WHERE 1 1/2" SQUARE.

AXLES MADE 10mm LONGER APPROX POST 1995  
TO ALLOW FOR THICKER HALF (LOCK) NUTS.

DATE	RFC	SIGNED	REV	REVISION DESCRIPTION / REASON
------	-----	--------	-----	-------------------------------

DRAWING No.	PAGE	REV
A0538B62GA	01	A

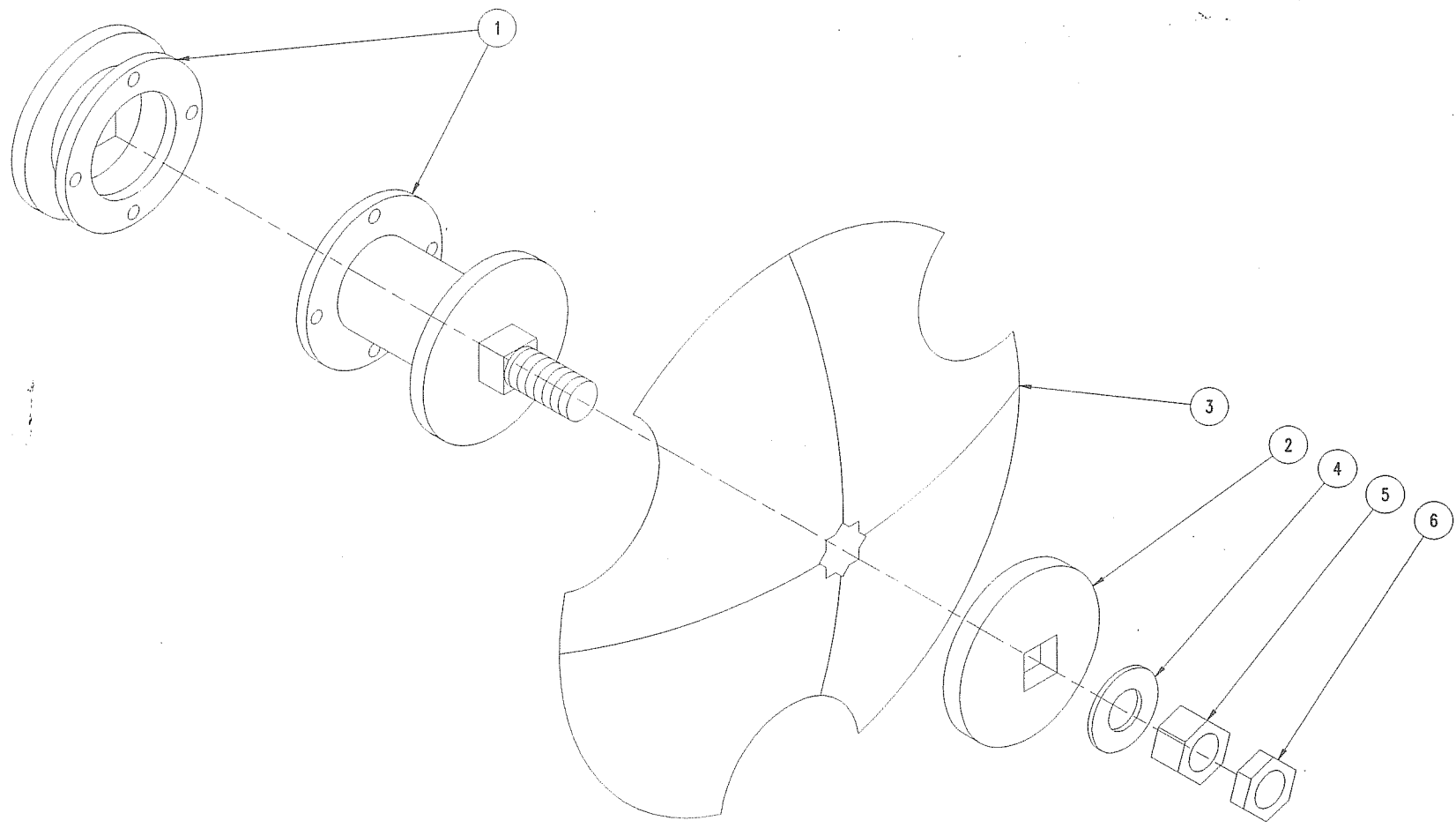


ITEM	PART/ASS. No.	DESCRIPTION	QTY.	ITEM	PART/ASS. No.	DESCRIPTION	QTY.
				14	S-ME-BR-0054	PLOUGH BEARING 40mm SQ	5
27	S-FA-NU-UC-0005	NUT 1/2"UNC ZP	20	13	M0024HB75-56	B60-700 SPACER	
26	S-FA-NU-UF-0013	NUT 1-1/2"UNF 12TPI ZP	4	12	M4151SQ40	B62 AXLE (40mm SQ @ 1491)	
25	M0035B60PA	B60/62 CONVEX HALF DUMBELL	5	11	M4150SQ40	B62 AXLE (40mm SQ @ 1320)	
24	M4136B62PA	B62 CONCAVE HALF DUMBELL	4	10	S-DS-SC-0009	SCALLOPED DISC 26"x6mm	1
23	MC0012CVPL20	B60 CONVEX END PLATE	1	9	S-FA-NU-UC-0008	NUT 3/4"UNC ZP	
22	MC0012CCPL20	B60 CONCAVE END PLATE	2	8	S-FA-WA-SP-0009	SPRING WASHER 3/4"SQ ZP	
21	M4135B62PA	B62 FULL DUMBELL	6	7	S-FA-BO-UU-0201	"U"BOLT 10x3-1/2x3/4"UNC ZP	
20	S-FA-NU-UF-LO-2	LOCKING NUT 1-1/2"UNF 12TPI ZP	4	6	S-FA-NU-UC-0010	NUT 1"UNC ZP	
19	S-FA-WA-FL-0012	FLAT WASHER 1-1/2" ZP	4	5	S-FA-WA-SP-0010	SPRING WASHER 1"SQ ZP	
18	M0020B60PA	B60-700 BEARING GUARD	5	4	S-FA-WA-FL-0008	FLAT WASHER 1" ZP	
17	S-FA-WA-SP-0006	SPRING WASHER 1/2"SQ ZP	20	3	S-FA-BO-UC-0803	PIVOT & SLOTTED PLATE BOLT 3-1/2x1"UNC ZP	
16	S-FA-BO-UC-0403	BEARING & FILLER KITBOLT 1-3/4x12"UNC ZP	14	2	M4141FL65-16	B62 "U"BOLT CLAMP PLATE	
15	S-FA-BO-UC-0405	BEARING BOLT 2-1/4x1/2"UNC ZP	10	1	M4145B62GA	B62-624 REAR GANG	

NAME: B62		TYPE: ASS		TITLE: B62 24 PLATE REAR GANG		DRAWN I.J.S.		DATE 10/12/98		DRAWING			
APPEARS IN BOOK :						APPROVED S.B.		SCALE N.T.S.		A0538B62GA 01			
This drawing and design shown hereon is the property of BONEL MANUFACTURING Ltd and must not be sold, lent, given away, copied, reproduced or otherwise divulged to third parties or used for manufacturing or other purposes without the written permission of BONEL MANUFACTURING Ltd.				P&H RURAL from planting to harvesting		Unless Otherwise Stated All Dimensions Are In Millimetres		OPEN MACHINING TOLERANCES Linear +0.8 -0.8 Angular 1 deg.		GENERAL TOLERANCES Linear ±mm Angular 1 deg.		DEFAULT MACHINING TOLERANCE +0.00 -0.17	

DATE	RFC	SIGNED	REV	REVISION DESCRIPTION / REASON
------	-----	--------	-----	-------------------------------

DRAWING No.	PAGE	REV
A0542B62GA	01	A



6	S-FA-NU-UF-LD-2	LOCK NUT 1-1/2"UNF ZP
5	S-FA-NU-UF-0013	NUT 1-1/2"UNF ZP
4	S-FA-WA-FL-0012	FLAT WASHER 1-1/2" ZP
3	S-DS-PL-0046	22"x5mm FILLER DISC
2	MC0012CCPL20	B60 END PLATE
1	M4153B62PA	B62 FURROW FILLER ASSEMBLY
ITEM	PART/ASS. No.	DESCRIPTION

NAME: B62	TYPE: ASS	TITLE: B62 BOLT ON FILLER KIT	DRAWN I.J.S.	DATE 11/12/98	DRAWING		RE
APPEARS IN BOOK :			APPROVED S.B.	SCALE N.T.S.	DRAWING No.	PAGE	RE
					A0542B62GA	01	A

This drawing and design shown hereon is the property of BONEL MANUFACTURING Ltd and must not be sold, lent, given away, copied, reproduced or otherwise divulged to third parties or used for manufacturing or other purposes without the written permission of BONEL MANUFACTURING Ltd.

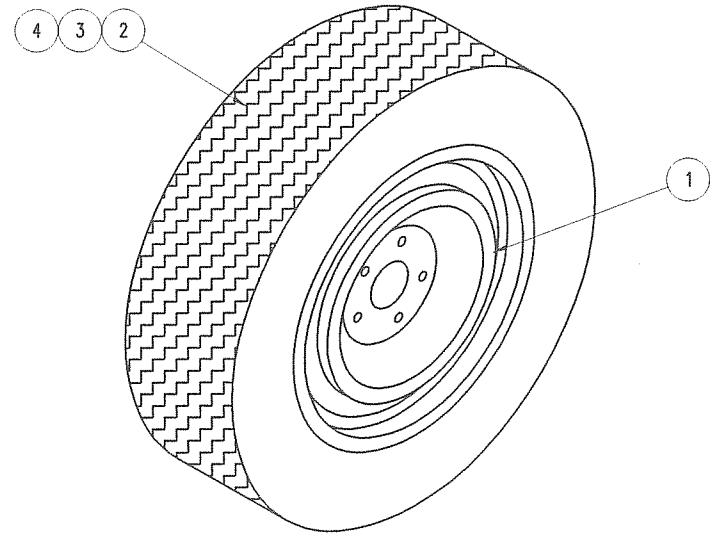
DO NOT SCALE

**P&H RURAL**  
from planting to harvesting

Unless Otherwise Stated All Dimensions Are in Millimetres	OPEN MACHINING TOLERANCE +0.8 -0.8	GENERAL TOLERANCES Linear: 1mm Angular: 1 deg.	DEFAULT MACHINING TOLERANCE +0.00 -0.17
---	--	--	---

DATE	RFC	SIGNED	REV	REVISION DESCRIPTION / REASON
------	-----	--------	-----	-------------------------------

DRAWING No.	PAGE	REV.
A2127B62SC	01	A



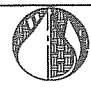
4	S-ME-TY-0146	MISC
3	S-ME-TY-0054	TUBE 235x16x14
2	S-ME-TY-0036	TYRE 9.5LX 14 SL 8PLY
1	M4170B62PA	B62-ALL WHEEL RIM (POST 7/5/97)
ITEM	PART No.	DESCRIPTION

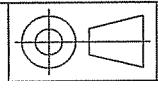
NAME: B62	TYPE: ASS	TITLE: B62-ALL RIM/TYRE ASSEMBLY (POST 7/5/97)	DRAWN R.W.W.	DATE 28-07-98	DRAWING		REV.
APPEARS IN BOOK :			APPROVED S.B.	SCALE 1:7.5	DRAWING No.	PAGE	
					A2127B62SC	01	A

This drawing and design shown hereon is the property of BONEL MANUFACTURING Ltd and must not be sold, lent, given away, copied, reproduced or otherwise divulged to third parties or used for manufacturing or other purposes without the written permission of BONEL MANUFACTURING Ltd.

(C) BONEL MANUFACTURING Ltd.

DO NOT SCALE

 **P&H RURAL**  
from planting to harvesting

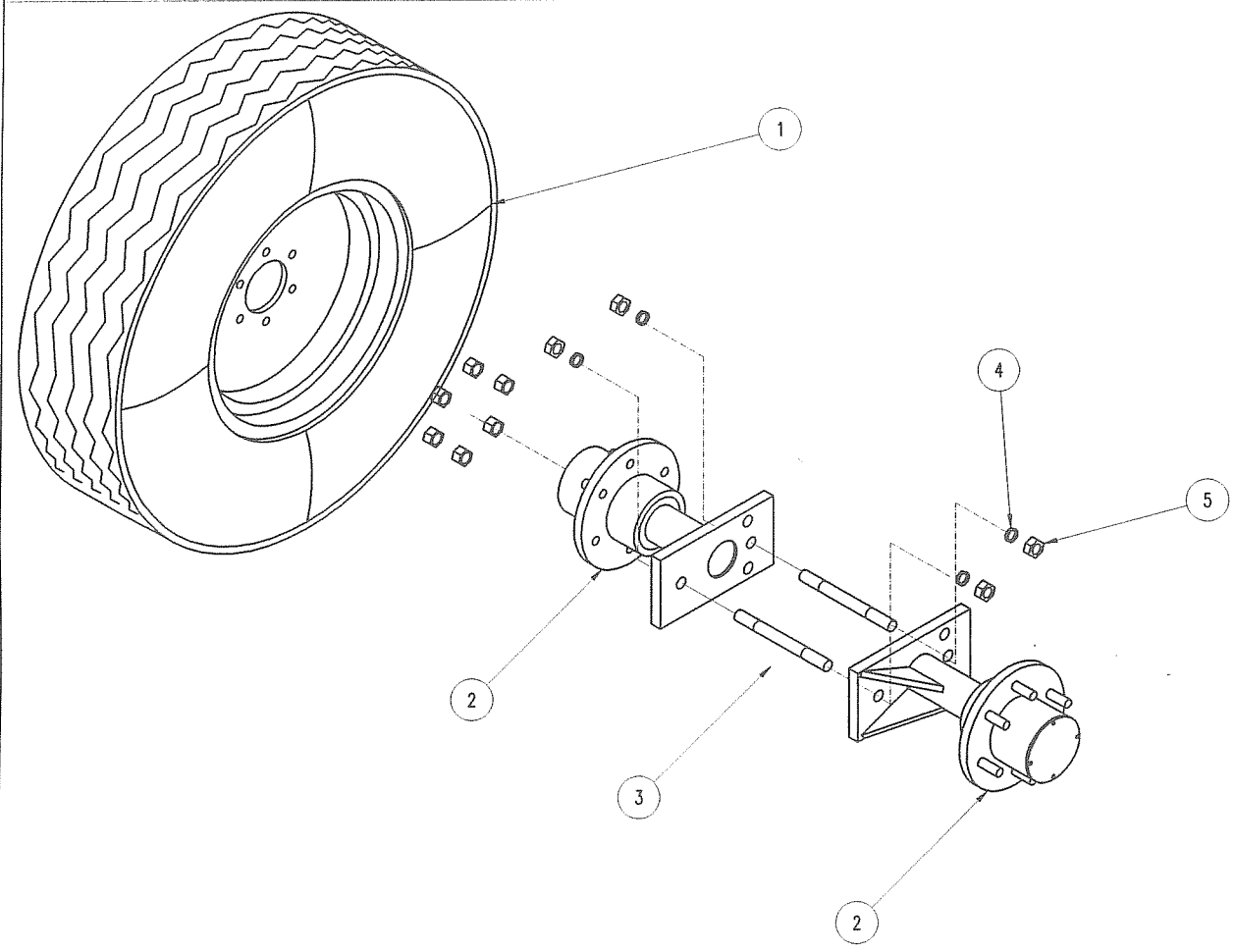


Unless Otherwise Stated All Dimensions Are in Millimetres

OPEN MACHINING TOLERANCE	GENERAL TOLERANCES	DEFAULT MACHINING TOLERANCE
+0.8 -0.8	Linear :mm Angular 1 deg.	+0.00 -0.17

DATE	REF	SIGNED	REV	REVISION DESCRIPTION / REASON
------	-----	--------	-----	-------------------------------

DRAWING No.	PAGE	RE
A2129B62SA	01	A



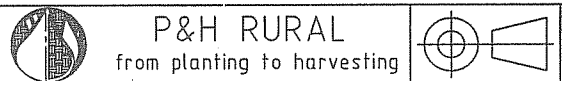
5	S-FA-NU-UC-0008	NUT 3/4"UNC ZP	4
4	S-FA-WA-SP-0009	SPRING WASHER 3/4"SQ ZP	4
3	M4169R01905BS	B62 DUAL WHEEL BOLT	2
2	M0360B60PA	B60-ALL STUB AXLE BRACKET	2
1	A2127B62SC	B62-ALL RIN/TYRE ASSEMBLY	2
ITEM	PART/ASS. No.	DESCRIPTION	QT'

NAME: B62	TYPE: ASS	TITLE: B62 DUAL WHEEL STUB AXLE ASSEMBLY	DRAWN I.J.S.	DATE 10/12/98	DRAWING		RE
APPEARS IN BOOK :			APPROVED S.B.	SCALE N.T.S.	DRAWING No.	PAGE	
					A2129B62SA	01	A

This drawing and design shown hereon is the property of BONEL MANUFACTURING Ltd and must not be sold, lent, given away, copied, reproduced or otherwise divulged to third parties or used for manufacturing or other purposes without the written permission of BONEL MANUFACTURING Ltd.

(C) BONEL MANUFACTURING Ltd.

DO NOT SCALE

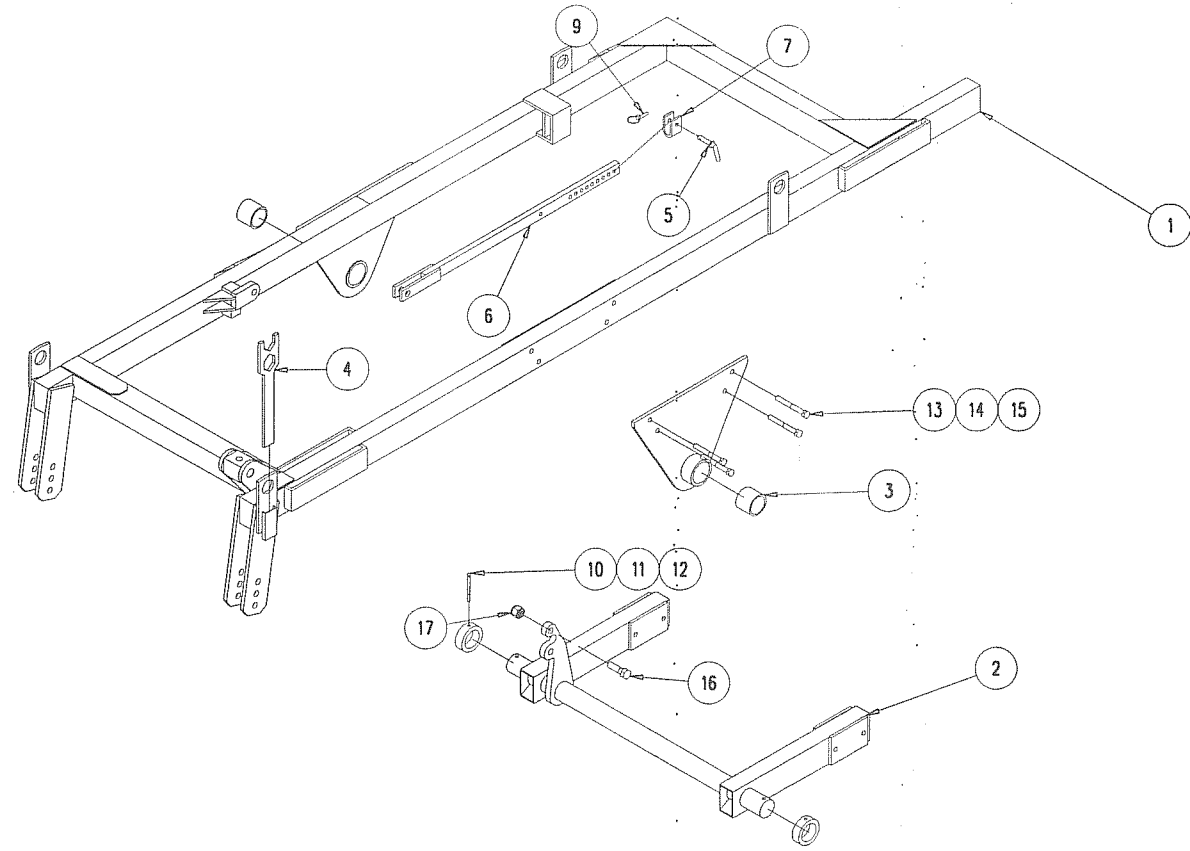


Unless Otherwise Stated All Dimensions Are in Millimetres

OPEN MACHINING TOLERANCE	GENERAL TOLERANCES	DEFAULT MACHINING TOLERANCE
+0.8 -0.8	Linear: 1mm Angular: 1 deg.	+0.00 -0.17

DATE	RFC	SIGNED	REV	REVISION DESCRIPTION / REASON
------	-----	--------	-----	-------------------------------

DRAWING No.	PAGE	REV.
A0498B62MF	01	A



17	S-FA-NY-UC-0010	NYLOC NUT 1"UNC ZP	1	8	S-FA-PN-LY-0002	LYNCH PIN	1
16	S-FA-BD-UC-0802	DEPTH STOP/RAM LUG BOLT 3x1"UNC ZP	1	7	M0305FL50-10	B60-700 DEPTH STOP	1
15	S-FA-NU-UC--0008	NUT 3/4"UNC ZP	4	6	M0008B60PA	B60-700 DEPTH GAUGE	1
14	S-FA-WA-SP-0009	SPRING WASHER 3/4"SQ ZP	4	5	M0033B60PA	B60-700 DEPTH PIN	1
13	S-FA-BD-UC-0711	WHEEL DROPPER/MAIN FRAME BOLT 5x3/4"UNC ZP	4	4	M0014PL12BIS	B60-700 SPANNER	1
12	S-FA-NU-UC-0005	NUT 1/2"UNC ZP	2	3	M4128STORE	B62 AUSTLON BUSH	2
11	S-FA-WA-SP-0006	SPRING WASHER 1/2"SQ ZP	2	2	M4126B62MF	B62 UNDERCARRIAGE C/W AXLE COLLARS	1
10	S-FA-BD-UC-0412	AXLE COLLAR BOLT 5x1/2"UNC ZP	2	1	M4125B62MF	B62 MAIN FRAME	1
ITEM	PART/ASS. No.	DESCRIPTION	QTY.	ITEM	PART/ASS. No.	DESCRIPTION	QTY.

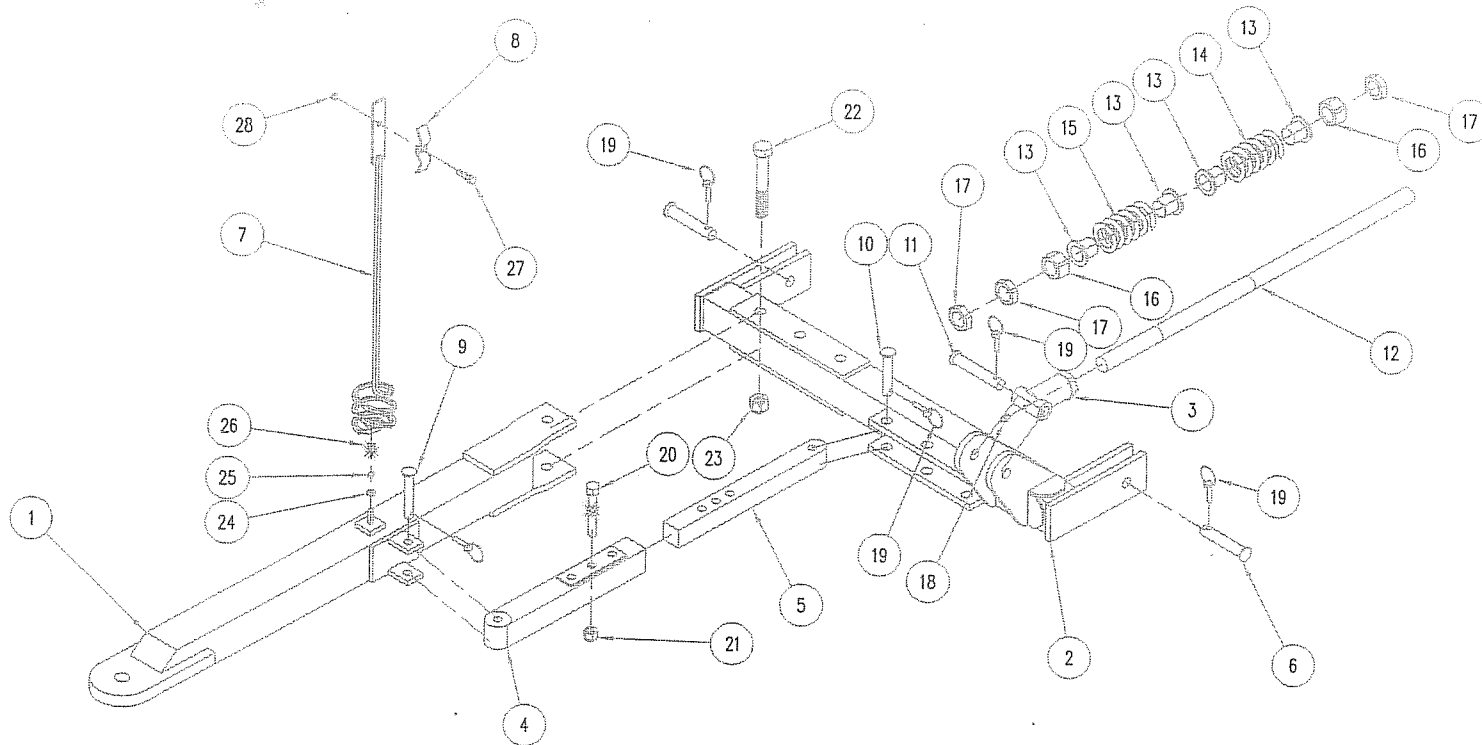
NAME: B62	TYPE: ASS	TITLE: B62-MAIN FRAME ASSEMBLY	DRAWN I.J.S.	DATE 09/12/98	DRAWING No. A0498B62MF	PAGE 01	REV. A
APPEARS IN BOOK :			APPROVED S.B.	SCALE N.T.S.			

This drawing and design shown hereon is the property of BONEL MANUFACTURING Ltd and must not be sold, lent, given away, copied, reproduced or otherwise divulged to third parties or used for manufacturing or other purposes without the written permission of BONEL MANUFACTURING Ltd. © BONEL MANUFACTURING Ltd. DO NOT SCALE

P&H RURAL from planting to harvesting

Unless Otherwise Stated All Dimensions Are In Millimetres

OPEN MACHINING TOLERANCE	GENERAL TOLERANCES	DEFAULT MACHINING TOLERANCE
+0.8	Linear : 1mm	+0.00
-0.8	Angular : 1 deg.	-0.17



28	S-FA-NY-UC-0004	NYLOC NUT 3/8"UNC ZP	1	14	S-ME-SP-0025	COIL SPRING 16mm	1
27	S-FA-BO-UC-0202	POGO STICK HOSE CLAMP BOLT 1-1/4x38"UNC ZP	1	13	M0023HB63-40	B60 SPRING RETAINER	4
26	S-FA-NU-UC-0005	NUT 1/2"UNC ZP	1	12	M0548R03810BS	B150 LEVELLING ROD	1
25	S-FA-WA-SP-0006	SPRING WASHER 1/2"SQ ZP	1	11	M4.14.0B62PA	B62 LEVELLING ROD PIN	1
24	S-FA-WA-FL-0005	FLAT WASHER 1/2" ZP	1	10	M0032B60PA	B60-700 SIDE SHIFT ADJUSTER PIN	1
23	S-FA-NY-UC-0009	NYLOC NUT 1"UNC ZP	1	9	M0366B60PA	B60-700 SIDE SHIFT ADJUSTER PIN	1
22	S-FA-BO-UC-0810	HITCH/DRAWBAR PIVOT BOLT 7x1"UNC ZP	1	8	M0300FL25-5	B60-700 HOSE CLAMP	1
21	S-FA-NY-UC-0008	NYLOC NUT 3/4"UNC ZP	1	7	M0010B60PA	B60-700 POGO STICK	1
20	S-FA-BO-UC-0709	DRAWBAR STAY SLIDE BOLT 4x3/4"UNC ZP	1	6	M4.139B62PA	B62 HITCH PIN	2
19	S-FA-PN-LY-0001	LYNCH PIN	5	5	M0399B150	B60-700 DRAWBAR STAY INNER	1
18	S-ME-FT-NI-0032	LEVELLING ROD ADJUSTER GREASE NIPPLE 1/8"BSP STRAIGHT	1	4	M0005B60PA	B60-700 DRAWBAR STAY OUTER	1
17	S-FA-NU-BW-L0-2	LEVELLING ROD LOCK NUT 1"BSW ZP	3	3	M4.131B62PA	B62 LEVELLING SCREW ADJUSTER	1
16	S-FA-NU-BW-0012	LEVELLING ROD NUT 1"BSW ZP	2	2	M4.130B62PA	B62 HITCH	1
15	S-ME-SP-0030	COIL SPRING 18mm	1	1	M4.129B62PA	B62 DRAWBAR	1
ITEM	PART/ASS. No.	DESCRIPTION	QTY.	ITEM	PART/ASS. No.	DESCRIPTION	QTY.

NAME: B62

TYPE: ASS

TITLE:

B62 DRAWBAR/HITCH ASSEMBLY

DRAWN I.J.S.

DATE 10/12/98

DRAWING No.

APPROVED S.B.

SCALE N.T.S.

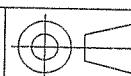
A0499B62PA

This drawing and design shown hereon is the property of BONEL MANUFACTURING Ltd and must not be sold, lent, given away, copied, reproduced or otherwise divulged to third parties or used for manufacturing or other purposes without the written permission of BONEL MANUFACTURING Ltd.



BONEL MANUFACTURING Ltd.

DO NOT SCALE

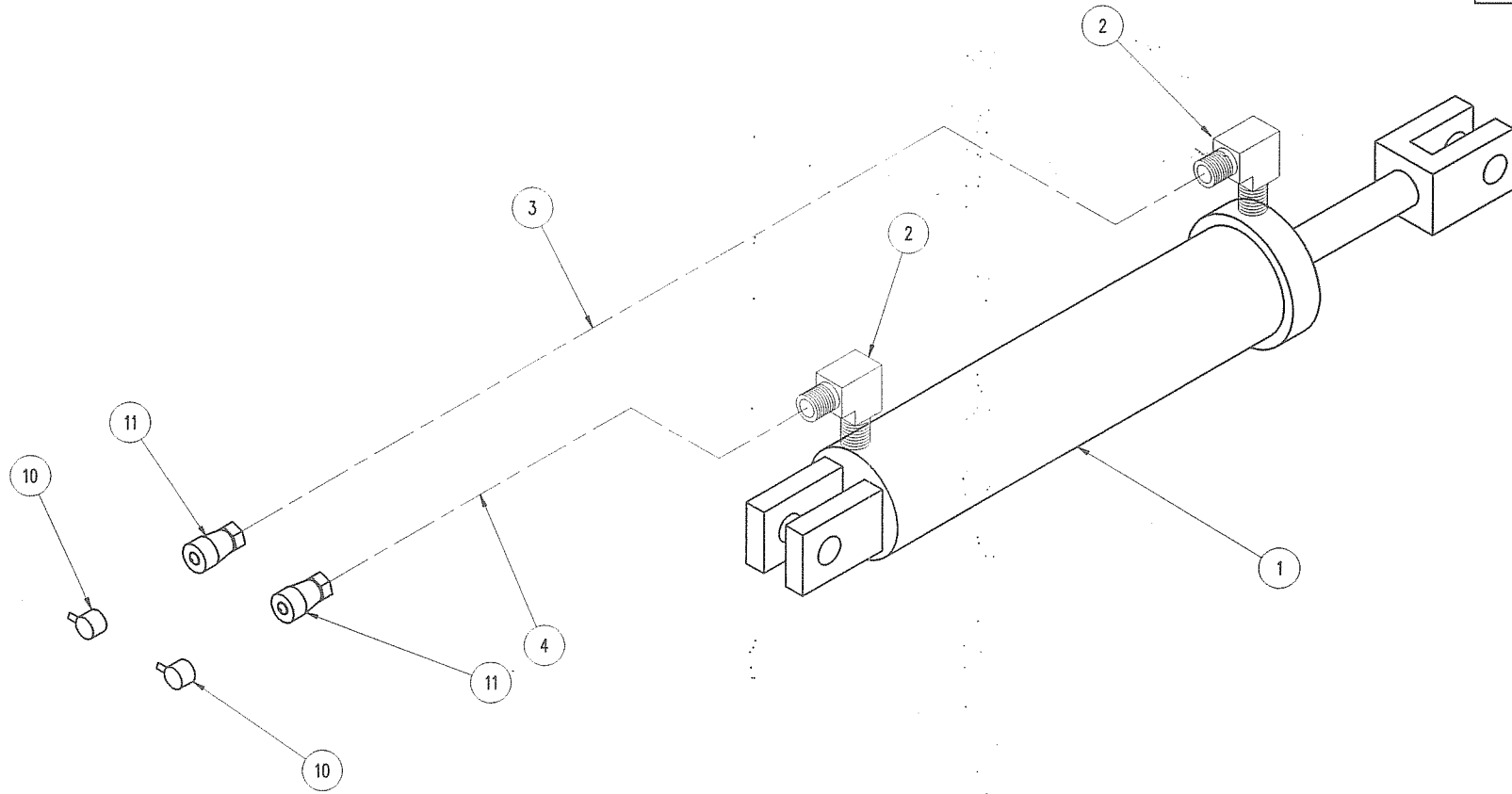
P&H RURAL  
from planting to harvesting

Unless Otherwise  
Stated All Dimensions  
Are In Millimetres

OPEN MACHINING  
TOLERANCE  
+0.8  
-0.8

GENERAL  
TOLERANCES  
Linear :1mm  
Angular 1 deg.

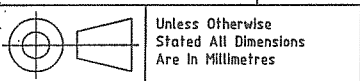
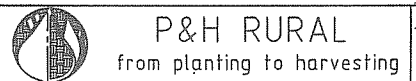
DEFAULT MACHINING  
TOLERANCE  
+0.00  
-0.17



11	S-HY-CQ-0010	UNIVERSAL BREAKAWAY COUPLING	2
10	S-HY-FT-0011	HYD HOSE END CAP MALE (BLUE)	2
9	S-HY-FT-0005	HYD HOSE CLAMP BOLT	2
8	S-HT-FT-0002	HYD HOSE CLAMP TOP PLATE	2
7	S-HY-FT-0004	HYD HOSE CLAMP TOP MIDDLE SECTION	4
6	S-HY-FT-0807	HYD HOSE END HU06-06NU	2
5	S-HY-FT-0021	HYD HOSE END HU06-08MT	2
4	S-HY-FT-0853	HYD HOSE 3/8" 4270mm LONG (FT21 - FT807)	1
3	S-HY-FT-0853	HYD HOSE 3/8" 4570mm LONG (FT21 - FT807)	1
2	S-HY-FT-0457	HYD ELBOW	2
1	S-HY-RA-SG-0304	WHEEL ARM CYLINDER 3x12" STROKE	1
ITEM	PART/ASS. No.	DESCRIPTION	QTY

NAME: B62	TYPE: ASS	TITLE: B62 HYDRAULICS KIT	DRAWN I.J.S.	DATE 10/12/98	DRAWING No. A0503-1B62HY		PAGE 01	REV A
APPEARS IN BOOK :			APPROVED S.B.	SCALE N.T.S.				

This drawing and design shown hereon is the property of BONEL MANUFACTURING Ltd and must not be sold, lent, given away, copied, reproduced or otherwise divulged to third parties or used for manufacturing or other purposes without the written permission of BONEL MANUFACTURING Ltd. © BONEL MANUFACTURING Ltd. DO NOT SCALE

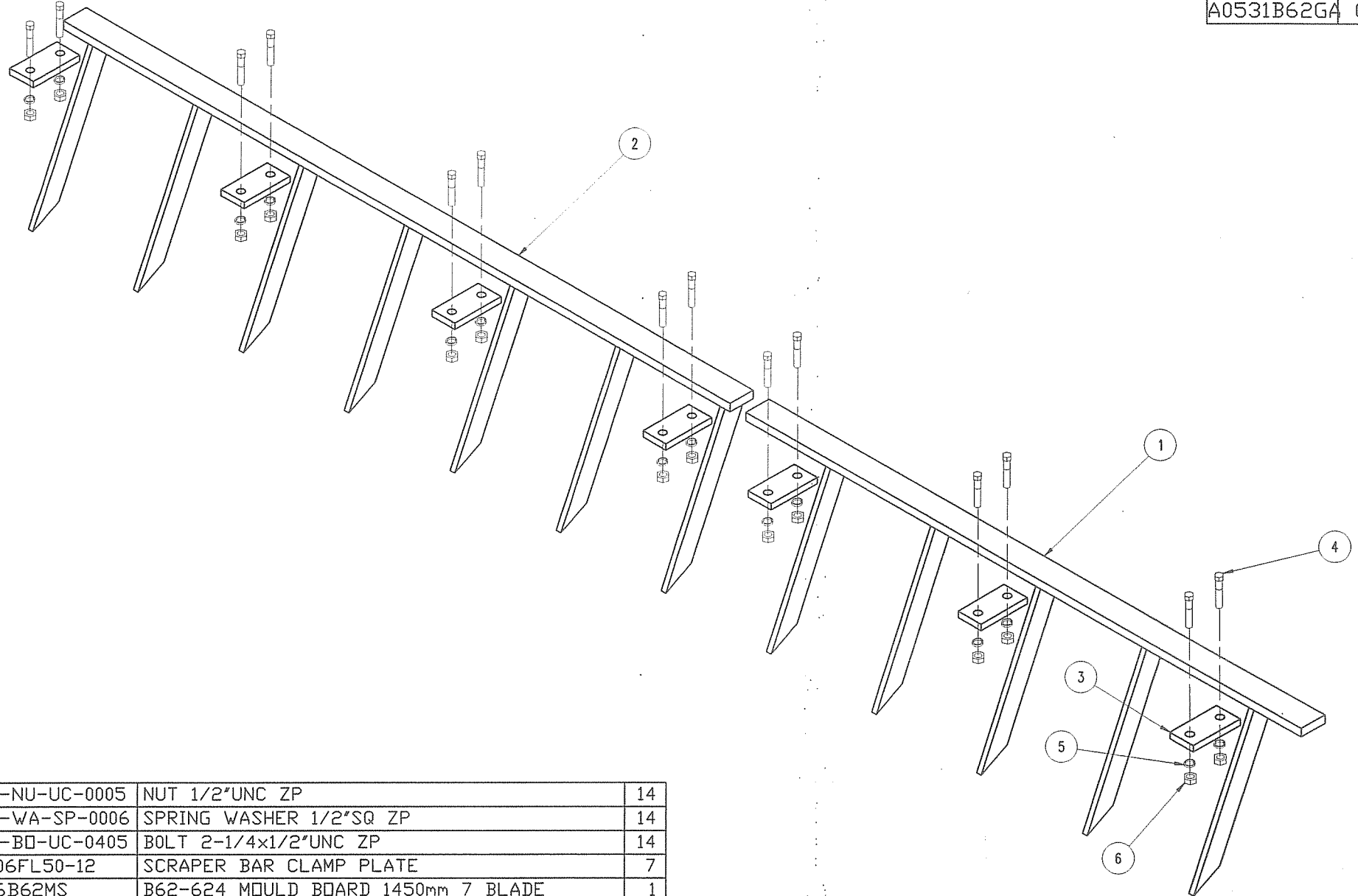


Unless Otherwise Stated All Dimensions Are in Millimetres	OPEN MACHINING TOLERANCE +0.8 -0.8	GENERAL TOLERANCES Linear: 1mm Angular: 1 deg.	DEFAULT MACHINING TOLERANCE +0.00 -0.17
---	--	--	---



DATE	RFC	SIGNED	REV	REVISION DESCRIPTION / REASON
------	-----	--------	-----	-------------------------------

DRAWING No.	PAGE	REV
A0531B62GA	01	A



6	S-FA-NU-UC-0005	NUT 1/2"UNC ZP	14
5	S-FA-WA-SP-0006	SPRING WASHER 1/2"SQ ZP	14
4	S-FA-B0-UC-0405	BOLT 2-1/4x1/2"UNC ZP	14
3	MC0006FL50-12	SCRAPER BAR CLAMP PLATE	7
2	M4166B62MS	B62-624 MOULD BOARD 1450mm 7 BLADE	1
1	M4164B62MS	B62-624 MOULD BOARD 1200mm 5 BLADE	1
ITEM	PART/ASS. No.	DESCRIPTION	Q.TY.


NAME: B62	TYPE: ASS	TITLE: B62-624 FRONT GANG MOULD BOARD ASSEMBLY
APPEARS IN BOOK :		

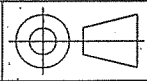
DRAWN I.J.S.	DATE 11/12/98	DRAWING		REV
APPROVED S.B.	SCALE N.T.S.	DRAWING No.	PAGE	
		A0531B62GA	01	A

This drawing and design shown hereon is the property of BONEL MANUFACTURING Ltd and must not be sold, lent, given away, copied, reproduced or otherwise divulged to third parties or used for manufacturing or other purposes without the written permission of BONEL MANUFACTURING Ltd.

© BONEL MANUFACTURING Ltd.

DO NOT SCALE

 **P&H RURAL**  
from planting to harvesting



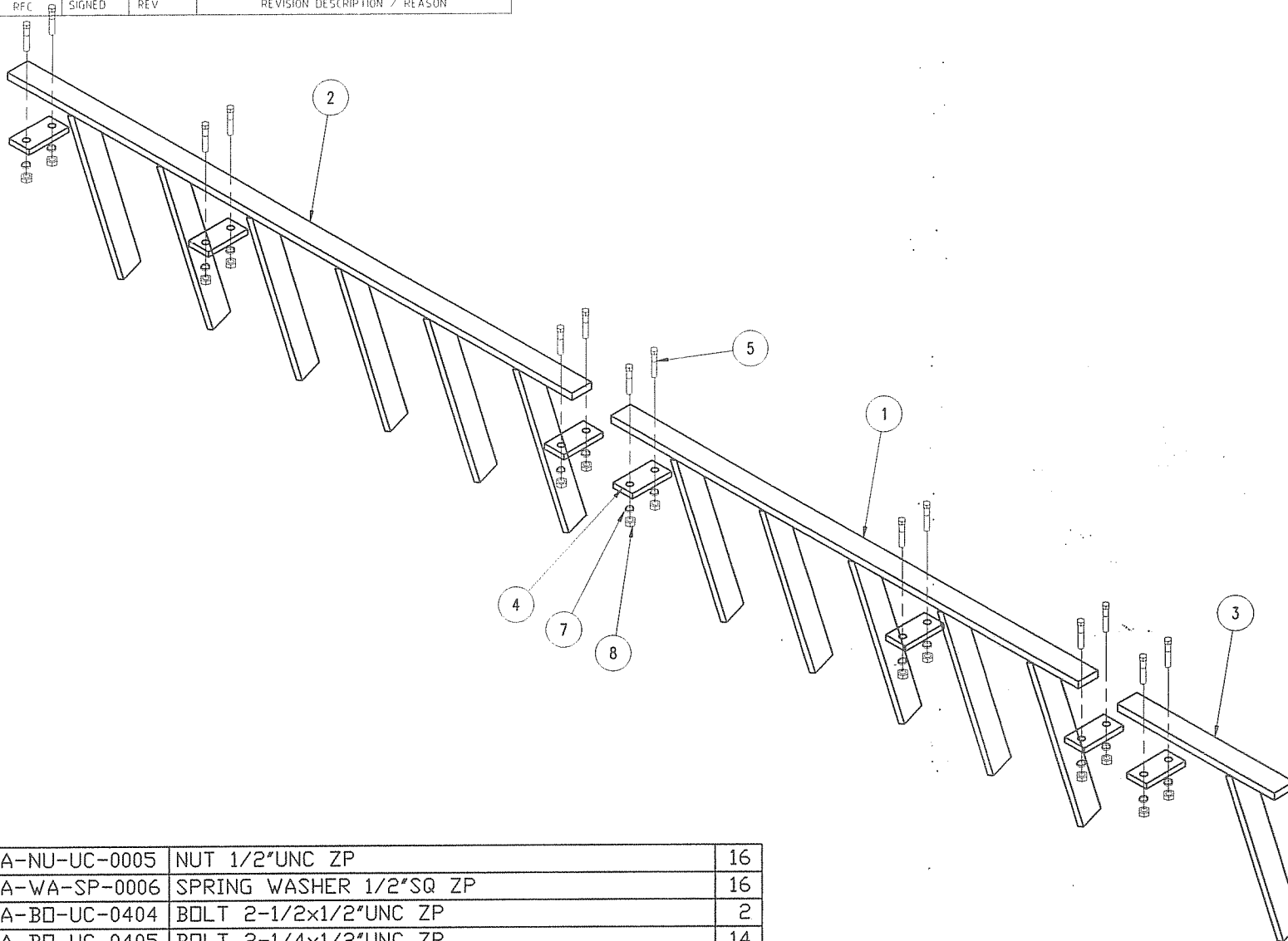
Unless Otherwise Stated All Dimensions Are In Millimetres

OPEN MACHINING TOLERANCE  
+0.8  
-0.8

GENERAL TOLERANCES  
Linear: 1mm  
Angular 1 deg.

DEFAULT MACHINING TOLERANCE  
+0.00  
-0.17

DATE	RFC	SIGNED	REV	REVISION DESCRIPTION / REASON
------	-----	--------	-----	-------------------------------



8	S-FA-NU-UC-0005	NUT 1/2"UNC ZP	16
7	S-FA-WA-SP-0006	SPRING WASHER 1/2"SQ ZP	16
6	S-FA-BD-UC-0404	BOLT 2-1/2x1/2"UNC ZP	2
5	S-FA-BD-UC-0405	BOLT 2-1/4x1/2"UNC ZP	14
4	MC0006FL50-12	SCRAPER CLAMP	7
3	M4162B62MS	B62 FILLER KIT MOULDBOARD	1
2	M4166B62MS	B62-624 MOULDBOARD 1450mm 7 BLADE	1
1	M4164B62MS	B62-624 MOULDBOARD 1200mm 5 BLADE	1
ITEM	PART/ASS. No.	DESCRIPTION	QTY.

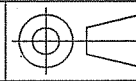
NAME: B62		TYPE: ASS		TITLE: B62-624 REAR GANG MOULDBOARD ASSEMBLY		DRAWN I.J.S.		DATE 14/12/98		DRAWING		RE	
APPEARS IN BOOK :						APPROVED S.B.		SCALE N.T.S.		DRAWING No. A0532B62GA 01		PAGE 01	REV A

This drawing and design shown hereon is the property of BONEL MANUFACTURING Ltd and must not be sold, lent, given away, copied, reproduced or otherwise divulged to third parties or used for manufacturing or other purposes without the written permission of BONEL MANUFACTURING Ltd. (C) BONEL MANUFACTURING Ltd.

DO NOT SCALE



P&H RURAL  
from planting to harvesting

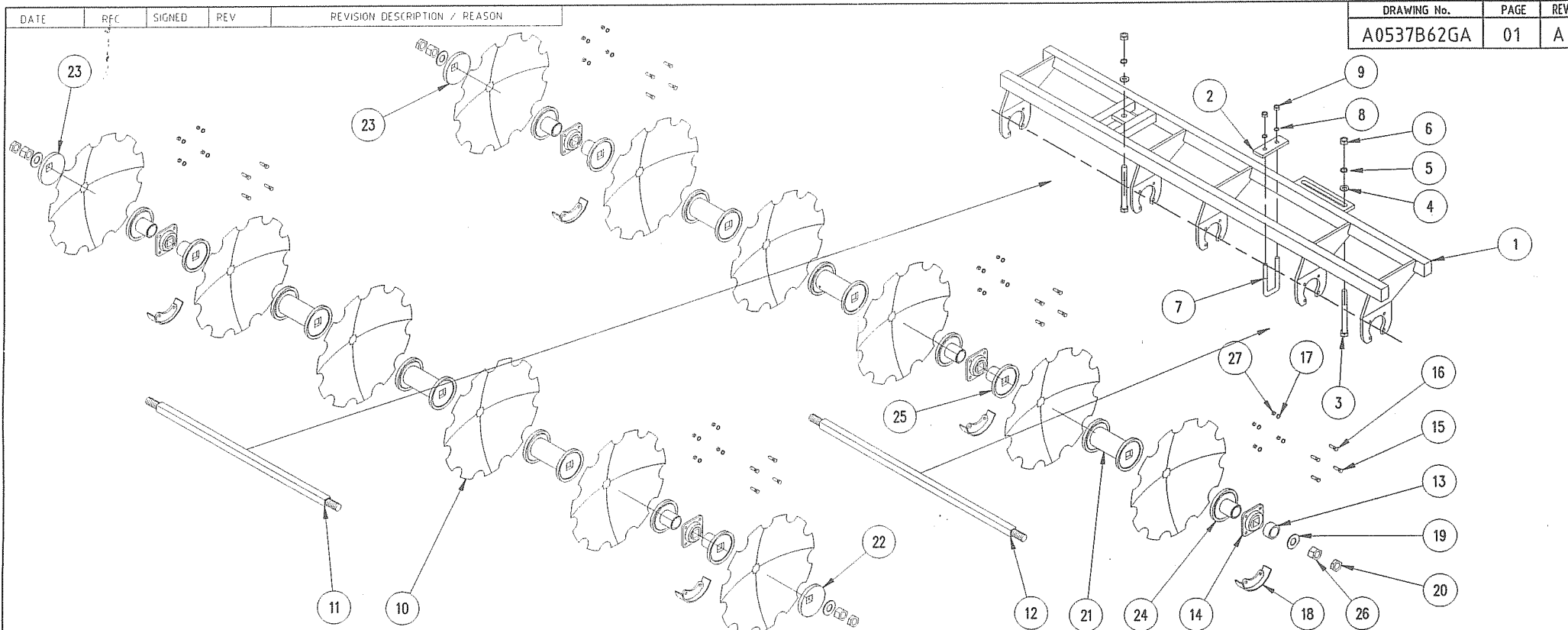


Unless Otherwise Stated All Dimensions Are in Millimetres

OPEN MACHINING TOLERANCE  
+0.8  
-0.8

GENERAL TOLERANCES  
Linear: 1mm  
Angular: 1 deg.

DEFAULT MACHINING TOLERANCE  
+0.00  
-0.17



DRAWING No.	PAGE	REV
A0537B62GA	01	A

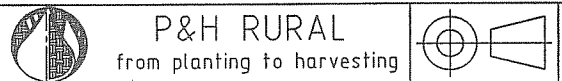
ITEM	PART/ASS. No.	DESCRIPTION	QTY.	ITEM	PART/ASS. No.	DESCRIPTION	QTY.
				14	S-ME-BR-0054	PLOUGH BEARING 40mm SQ	5
27	S-FA-NU-UC-0005	NUT 1/2"UNC ZP	20	13	M0024HB75-56	B60-700 SPACER	1
26	S-FA-NU-UF-0013	NUT 1-1/2"UNF 12TPI ZP	4	12	M4151SQ40	B62 AXLE (40mm SQ @ 1491)	1
25	M0035B60PA	B60/62 CONVEX HALF DUMBELL	5	11	M4150SQ40	B62 AXLE (40mm SQ @ 1320)	1
24	M4136B62PA	B62 CONCAVE HALF DUMBELL	4	10	S-DS-SC-0009	SCALLOPED DISC 26"x6mm	12
23	MC0012CVPL20	B60 CONVEX END PLATE	1	9	S-FA-NU-UC-0008	NUT 3/4"UNC ZP	2
22	MC0012CCPL20	B60 CONCAVE END PLATE	2	8	S-FA-WA-SP-0009	SPRING WASHER 3/4"SQ ZP	2
21	M4135B62PA	B62 FULL DUMBELL	6	7	S-FA-BO-UU-0201	"U"BOLT 10x3-1/2x3/4"UNC ZP	1
20	S-FA-NU-UF-LO-2	LOCKING NUT 1-1/2"UNF 12TPI ZP	4	6	S-FA-NU-UC-0010	NUT 1"UNC ZP	2
19	S-FA-WA-FL-0012	FLAT WASHER 1-1/2" ZP	4	5	S-FA-WA-SP-0010	SPRING WASHER 1"SQ ZP	2
18	M0020B60PA	B60-700 BEARING GUARD	5	4	S-FA-WA-FL-0008	FLAT WASHER 1" ZP	2
17	S-FA-WA-SP-0006	SPRING WASHER 1/2"SQ ZP	20	3	S-FA-BO-UC-0803	PIVOT & SLOTTED PLATE BOLT 3-1/2x1"UNC ZP	2
16	S-FA-BO-UC-0403	BEARING BOLT 1-3/4x12"UNC ZP	10	2	M4141FL65-16	B62 "U"BOLT CLAMP PLATE	1
15	S-FA-BO-UC-0405	BEARING BOLT 2-1/4x1/2"UNC ZP	10	1	M4144B62GA	B62-624 FRONT GANG	1

NAME: B62		TYPE: ASS		TITLE: B62 24 PLATE FRONT GANG		DRAWN I.J.S.		DATE 10/12/98		DRAWING No.		PAGE		REV	
APPEARS IN BOOK :						APPROVED S.B.		SCALE N.T.S.		A0537B62GA		01		A	

This drawing and design shown hereon is the property of BONEL MANUFACTURING Ltd and must not be sold, lent, given away, copied, reproduced or otherwise divulged to third parties or used for manufacturing or other purposes without the written permission of BONEL MANUFACTURING Ltd.

(C) BONEL MANUFACTURING Ltd.

DO NOT SCALE



Unless Otherwise Stated All Dimensions Are in Millimetres	OPEN MACHINING TOLERANCE	GENERAL TOLERANCES	DEFAULT MACHINING TOLERANCE
	+0.8 -0.8	Linear ±mm Angular 1 deg.	+0.00 -0.17